

CLOSURE PLAN FOR GEORGIA POWER COMPANY FORMER PLANT ARKWRIGHT-AP1 LANDFILL

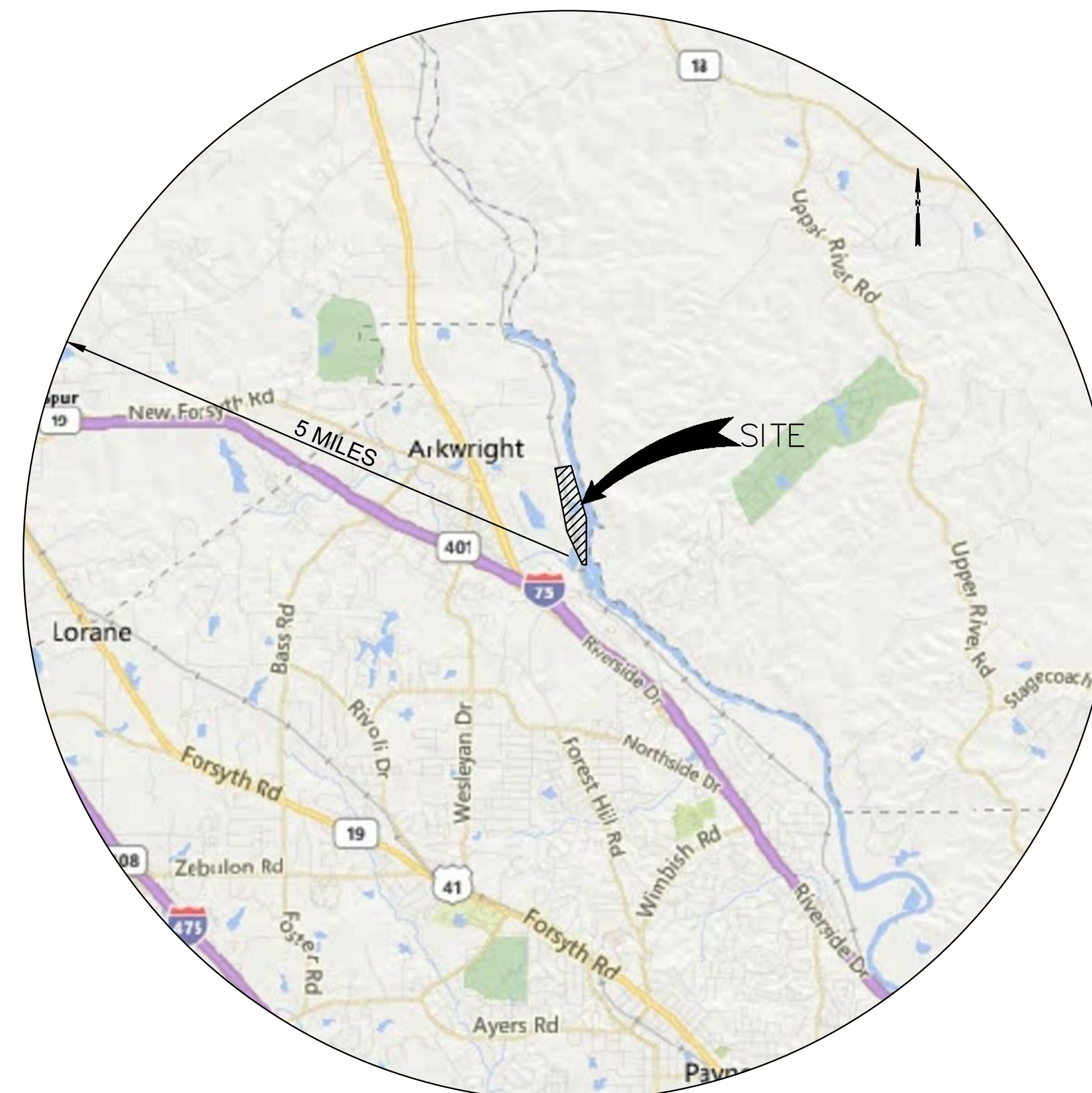
**MACON - BIBB COUNTY, GA
NOVEMBER 2018**

OWNER

GEORGIA POWER COMPANY
241 RALPH MCGILL BOULEVARD NE
ATLANTA, GA 30308
CONTACT: GM ENVIRONMENTAL AFFAIRS
(404) 506-6505

ENGINEER

JACOBS
TEN 10th STREET NW
SUITE 1400
ATLANTA, GA 30309
(404) 978-7600



PROJECT SITE LOCATION
SCALE: 1" = 1 MILE

Drawing Index		
Drawing #	Sheet Number	Sheet Title
C-001	1	COVER SHEET
C-002	2	LEGEND SHEET
CX101	3	EXISTING CONDITIONS
CG101	4	ANTICIPATED EXTENT OF CCR
CG102	5	CCR EXCAVATION PLAN
CG103	6	PHASE I CCR EXCAVATION (1 of 3)
CG104	7	PHASE I CCR EXCAVATION (2 of 3)
CG105	8	PHASE I CCR EXCAVATION (3 of 3)
CG106	9	PHASE II CCR EXCAVATION (1 of 3)
CG107	10	PHASE II CCR EXCAVATION (2 of 3)
CG108	11	PHASE II CCR EXCAVATION (3 of 3)
CG109	12	FINAL GRADING PLAN
CS101	13	SITE MONITORING PLAN
SC401	14	CROSS SECTIONS
C-501	15	DETAILS

REVISION HISTORY		
DATE	SHEETS	REQUESTED BY

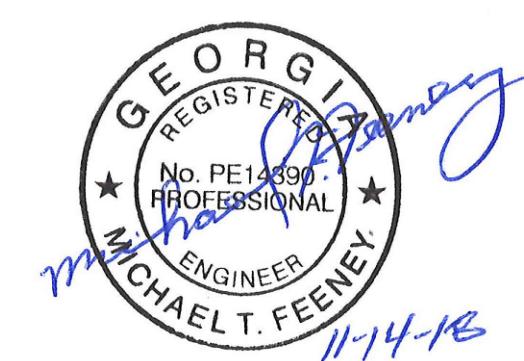
JACOBS



Georgia Power

LEGEND

EXISTING	PROPOSED	EXISTING	PROPOSED	EXISTING	PROPOSED
				PERMIT BOUNDARY	BUILDING
				CCR MANAGEMENT BOUNDARY	GROUNDWATER MONITORING WELL
				EXTENT OF CCR	SURFACE WATER MONITORING POINT
				STREAM AND WETLAND BUFFER	OUTLET PROTECTION
				FLOODPLAIN	STONE CHECK DAM
				GROUNDWATER CONTOUR	HAY BALE CHECK DAM
				JURISDICTIONAL WETLAND	FLARED END SECTION
				JURISDICTIONAL STREAM	INLET PROTECTION
				TREELINE	CONSTRUCTION EXIT
				BENCHMARK	NPDES SAMPLING POINT
				DRAINAGE BASIN BOUNDARY LINE	LEACHATE CLEANOUT
				EASEMENT	LEACHATE SUMP
				EDGE OF CELL	LEACHATE MANHOLE / PUMP STATION
				EDGE OF LINER	LEACHATE VAULT
				2' CONTOUR	AIR RELEASE VALVE
				10' CONTOUR	POWER POLE
				UNPAVED ROAD	HEADWALL
				PAVED ROAD	DROP INLET
				GRAVEL ROAD	OVERFLOW STRUCTURE
				SOLID UNDERDRAIN PIPE	GATE
				PERFORATED UNDERDRAIN PIPE	PIEZOMETER
				SOLID LEACHATE PIPE	SPOT ELEVATION
				PERFORATED LEACHATE PIPE	MARKER POST
				LEACHATE FORCE MAIN	DOWNDRAIN PIPE AND SLOPED PAVED HEADWALL
				DITCH CENTERLINE	SEDIMENT TRAP
				STORM DRAINAGE PIPE	ROLLED EROSION CONTROL PRODUCT
				STORM WATER DIVERSION BERM	
				STORM WATER RAIN FLAP	
				SINGLE ROW SILT FENCE	
				SILT CURTAIN	
				WATER MAIN	
				SANITARY SEWER	
				OVERHEAD POWER LINE	
				UNDERGROUND POWER LINE	
				GAS LINE	
				FENCE	
				RAILROAD	
				HDPE GEOMEMBRANE	
				GEOSYNTHETIC CLAY LINER	
				GEOCOMPOSITE DRAINAGE LAYER	
				GEOTEXTILE FILTER	
				PROTECTIVE SOIL COVER	
				LEACHATE COLLECTION SAND	
				DOWNDRAIN PIPE	
				RIP RAP	
				COMPACTED SOIL	
				CONCRETE	
				GRAVEL / STONE	
				SOIL FILL	

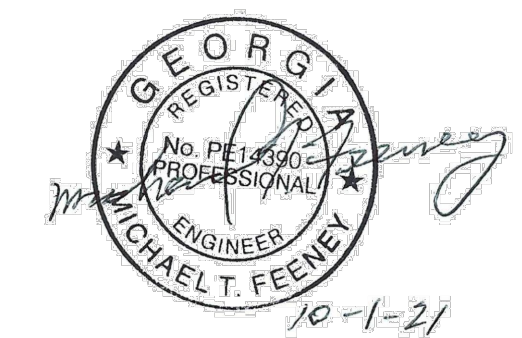
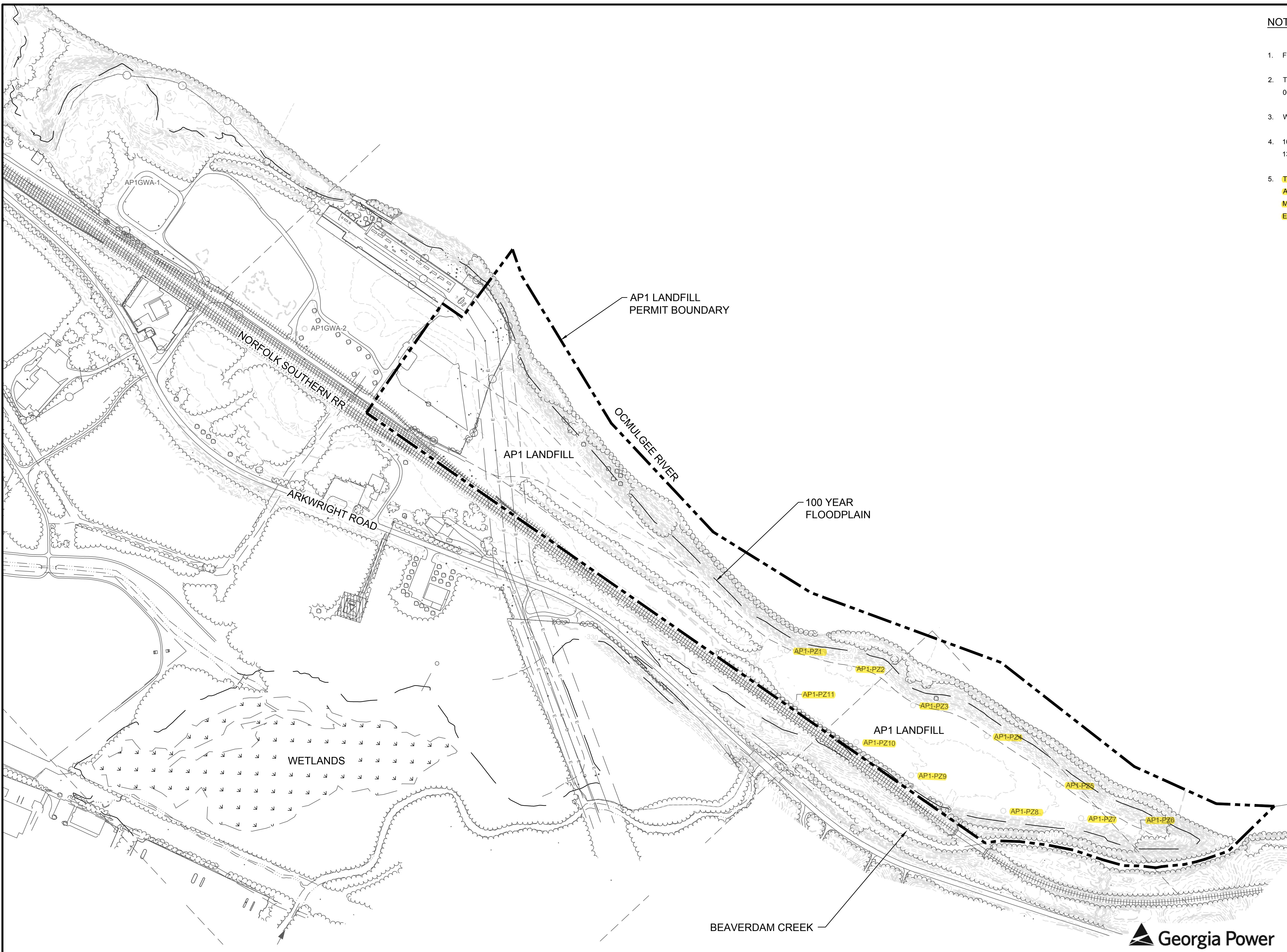


REV.	DATE	DESCRIPTION

LEGEND SHEET			
AP1 LANDFILL			
FOR			
GEORGIA POWER COMPANY			
FORMER PLANT ARKWRIGHT			
MACON - BIBB COUNTY, GA			
JACOBS			
404.978.7600	Ten 10th Street NW, Suite 1400, Atlanta, GA 30309		
JACOBS.COM	PROJ. NO.	35DK9206	DWG. C-002
SCALE	NTS		
DATE	NOVEMBER 2018		
SHEET		2	OF 15

NOTES:

1. FOR LEGEND SEE DRAWING C-002.
2. TOPOGRAPHIC DATA PROVIDED BY DONALDSON, GARRETT & ASSOCIATES, INC, DATED 06-26-2018.
3. WETLAND DELINEATION PERFORMED BY JACOBS, DATED 10-17-2018.
4. 100 YEAR FLOODPLAIN DATA TAKEN FROM THE FEMA INSURANCE RATE MAP (FIRM) PANEL 13021C0040G.
5. **TEMPORARY GROUNDWATER MONITORING WELLS (AP1PZ-1 THROUGH AP1PZ-11) WILL BE ABANDONED PRIOR TO CCR EXCAVATION ACTIVITIES. A PERMANENT GROUNDWATER MONITORING NETWORK, AS SHOWN ON SHEET CS101, WILL BE INSTALLED FOLLOWING CCR EXCAVATION ACTIVITIES.**

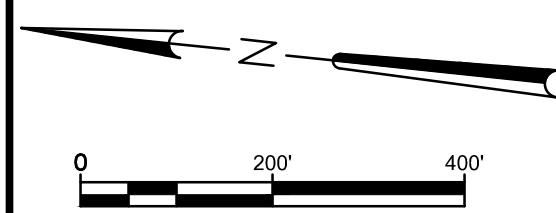


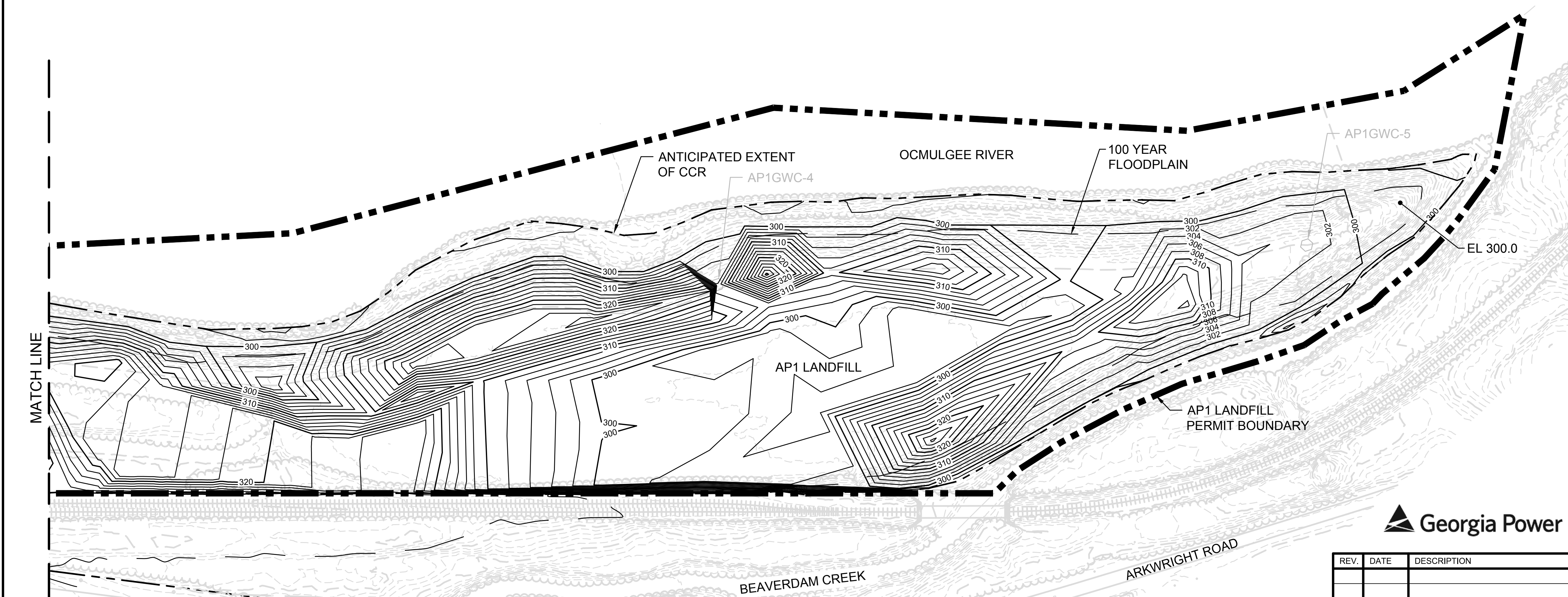
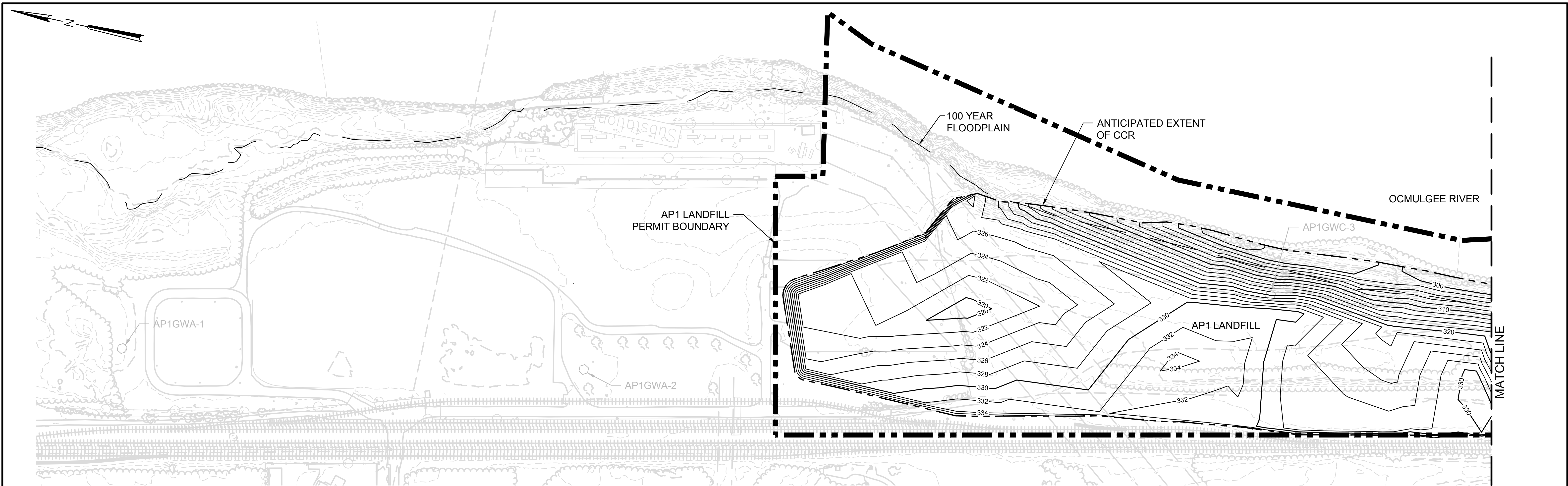
EXISTING CONDITIONS
AP1 LANDFILL
 FOR
 GEORGIA POWER COMPANY
 FORMER PLANT ARKWRIGHT
 MACON - BIBB COUNTY, GA



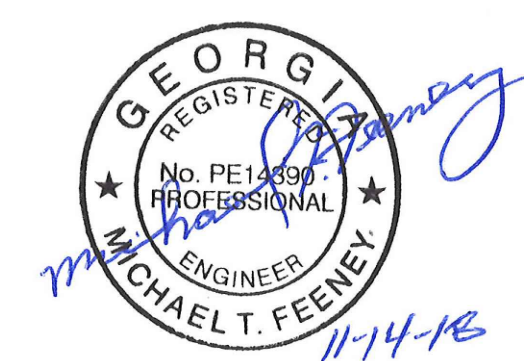
REV.	DATE	DESCRIPTION
A	10/01/2021	RESPONSE TO EPD COMMENT

404.978.7600 JACOBS.COM		Ten 10th Street NW, Suite 1400, Atlanta, GA 30309	
PROJ. NO.	D3442700	DWG.	CX101
SCALE	1" = 200'	SHEET 3 OF 15	
DATE	OCTOBER 2021		





- NOTES:**
1. FOR LEGEND SEE DRAWING C-002.
 2. CONTOURS SHOWN REPRESENT ANTICIPATED BASE AND EXTENT OF CCR. EXTENT OF CCR CONTOURS GENERATED USING 3D MODELING AND BASED ON EXISTING BORING DATA PROVIDED BY GEORGIA POWER AND LIMITED DATA OBTAINED BY JACOBS. ACTUAL EXTENT OF CCR WASTE TO BE CONFIRMED DURING REMOVAL.



REV.	DATE	DESCRIPTION

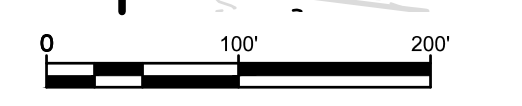
ANTICIPATED EXTENT OF CCR

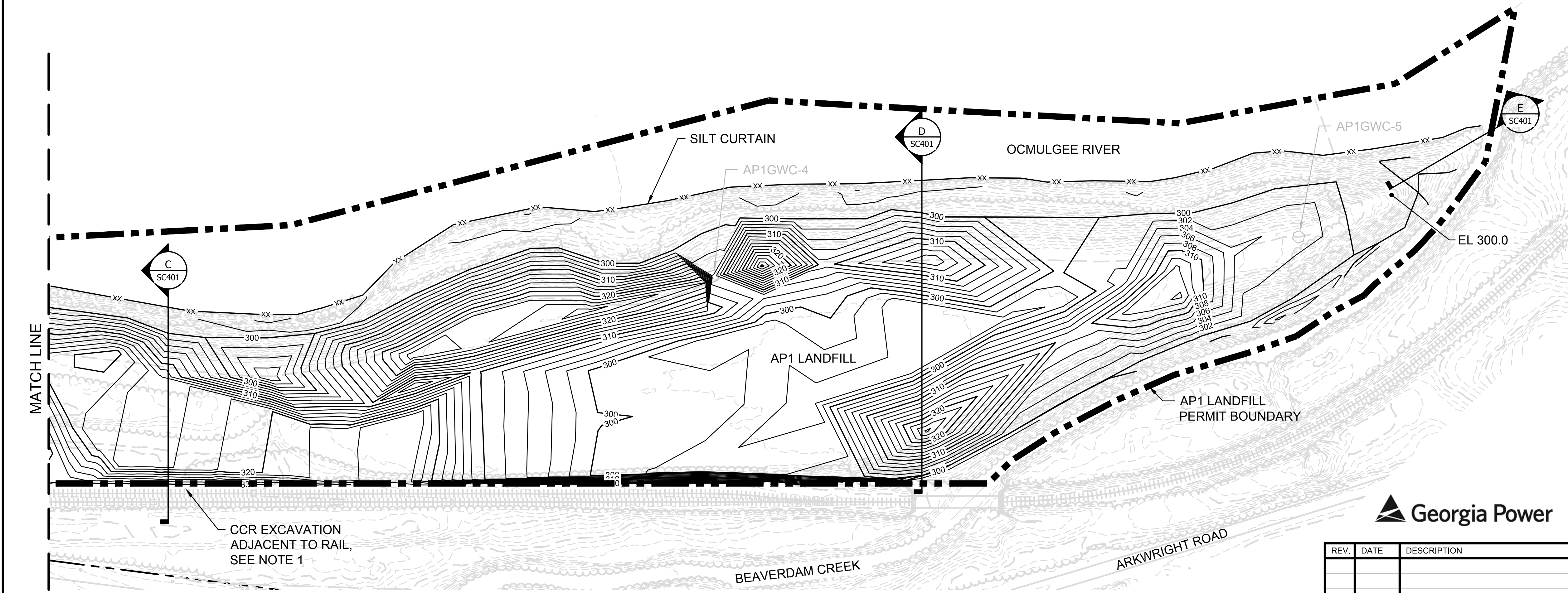
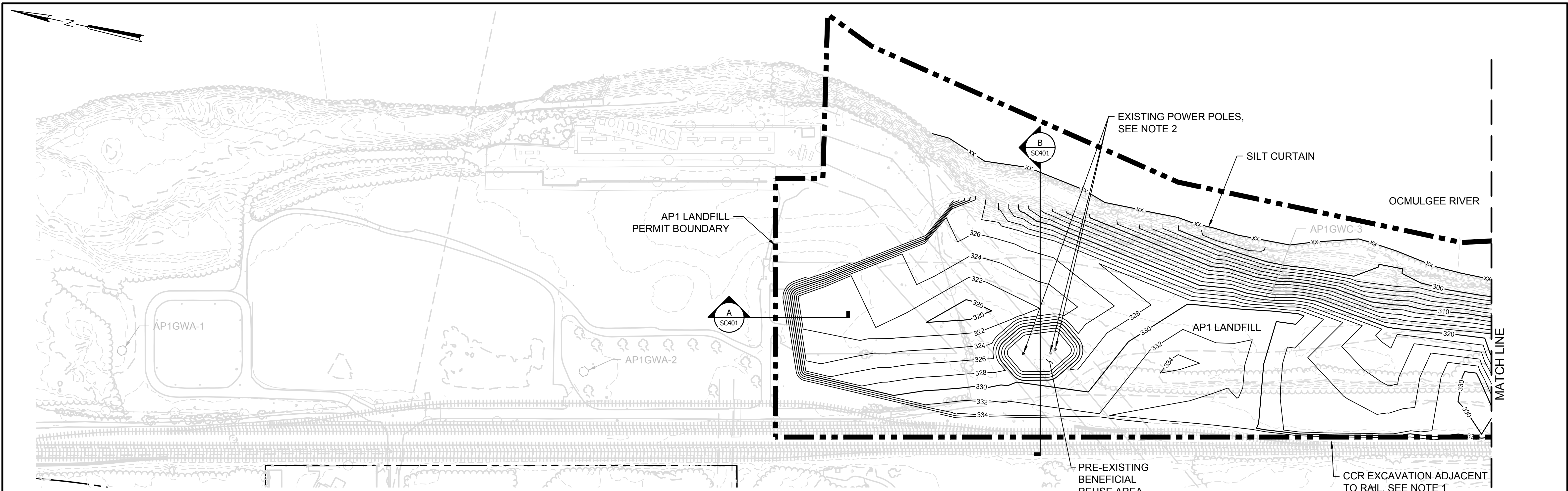
AP1 LANDFILL
FOR
GEORGIA POWER COMPANY
FORMER PLANT ARKWRIGHT
MACON - BIBB COUNTY, GA

JACOBS

404.978.7600
JACOBS.COM
Ten 10th Street NW, Suite 1400, Atlanta, GA 30309

PROJ. NO.	35DK9206	DWG.	CG101	EDIT
SCALE	AS SHOWN	SHEET 4 OF 15		
DATE	NOVEMBER 2018			





- NOTES:**
- CCR EXCAVATION ADJACENT TO EXISTING RAILROAD SHALL BE KEPT A MINIMUM DISTANCE OF 15' FROM CENTERLINE OF RAIL.
 - EXISTING ELECTRICAL POWER POLES INDICATED ARE TO REMAIN AFTER REMOVAL. A 25' MINIMUM BUFFER OF PRE-EXISTING BENEFICIAL REUSE MATERIAL SHALL BE LEFT IN PLACE AROUND INDICATED POLES WITHIN PERMIT BOUNDARY.
 - PROPOSED CONTOURS SHOWN REPRESENT THE ANTICIPATED EXTENT OF CCR TO BE EXCAVATED. AN ADDITIONAL 6 INCHES OF MATERIAL SHALL BE EXCAVATED BEYOND THE EXTENT OF CCR EXCEPT FOR THE BENEFICIAL REUSE AREAS.
 - FOR LEGEND SEE DRAWING C-002.
 - ACTUAL EXCAVATION SEQUENCE WILL BE BASED ON FIELD CONDITIONS AND ADJUSTED AS NEEDED TO APPROPRIATELY HANDLE STORMWATER AND CONTACT WATER.



CCR EXCAVATION PLAN

AP1 LANDFILL

FOR

GEORGIA POWER COMPANY

FORMER PLANT ARKWRIGHT

MACON - BIBB COUNTY, GA



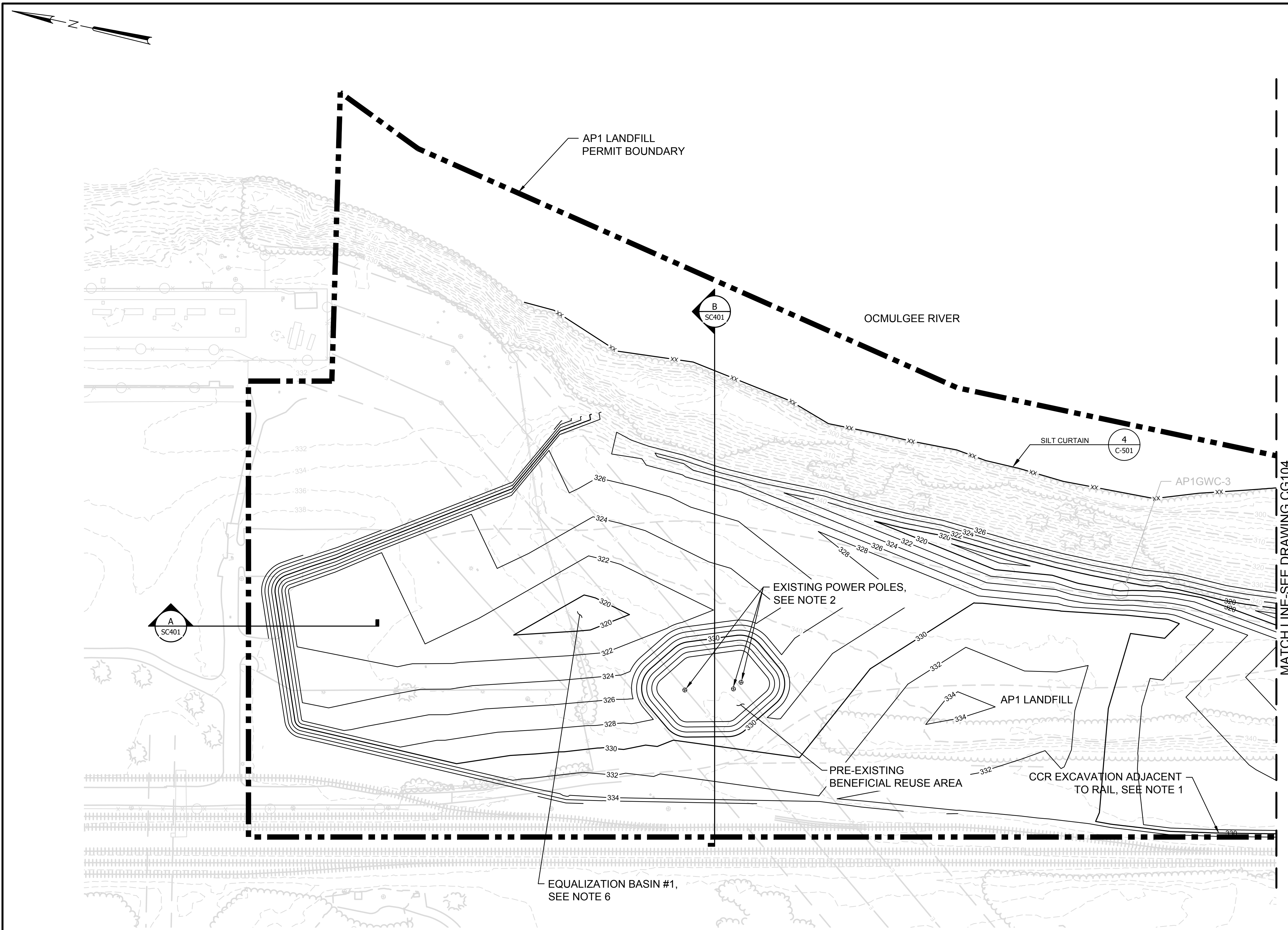
REV.	DATE	DESCRIPTION

404.978.7600 JACOBS.COM		Ten 10th Street NW, Suite 1400, Atlanta, GA 30309	
PROJ. NO.	35DK9206	DWG.	CG102
SCALE	AS SHOWN		EDIT
DATE	NOVEMBER 2018	SHEET 5 OF 15	



NOTES:

- CCR EXCAVATION ADJACENT TO EXISTING RAILROAD SHALL BE KEPT A MINIMUM DISTANCE OF 15' FROM CENTERLINE OF RAIL.
- EXISTING ELECTRICAL POWER POLES INDICATED ARE TO REMAIN AFTER REMOVAL. A 25' MINIMUM BUFFER OF PRE-EXISTING BENEFICIAL REUSE MATERIAL SHALL BE LEFT IN PLACE AROUND INDICATED POLES WITHIN PERMIT BOUNDARY.
- PROPOSED CONTOURS SHOWN REPRESENT THE ANTICIPATED EXTENT OF CCR TO BE EXCAVATED DURING PHASE I. AN ADDITIONAL 6 INCHES OF MATERIAL SHALL BE EXCAVATED BEYOND THE EXTENT OF CCR EXCEPT FOR THE BENEFICIAL REUSE AREAS.
- FOR LEGEND SEE DRAWING C-002.
- ACTUAL EXCAVATION SEQUENCE WILL BE BASED ON FIELD CONDITIONS AND ADJUSTED AS NEEDED TO APPROPRIATELY HANDLE STORMWATER AND CONTACT WATER.
- EQUALIZATION BASIN TO PROVIDE TEMPORARY INTERNAL RETENTION OF STORMWATER RUNOFF DURING REMOVAL.
- DURING CCR REMOVAL, SOIL BERMS SHALL BE CONSTRUCTED WITHIN THE EXCAVATION TO PROVIDE STORMWATER CONTROL. SEE DETAIL 2, DRAWING C-501 FOR TYPICAL STORMWATER DIVERSION BERM.



MATCH LINE-SEE DRAWING CG104



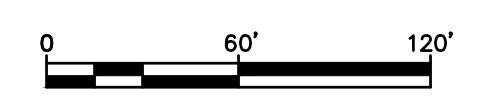
PHASE I CCR EXCAVATION (1 OF 3)

AP1 LANDFILL
FOR
GEORGIA POWER COMPANY
FORMER PLANT ARKWRIGHT
MACON - BIBB COUNTY, GA



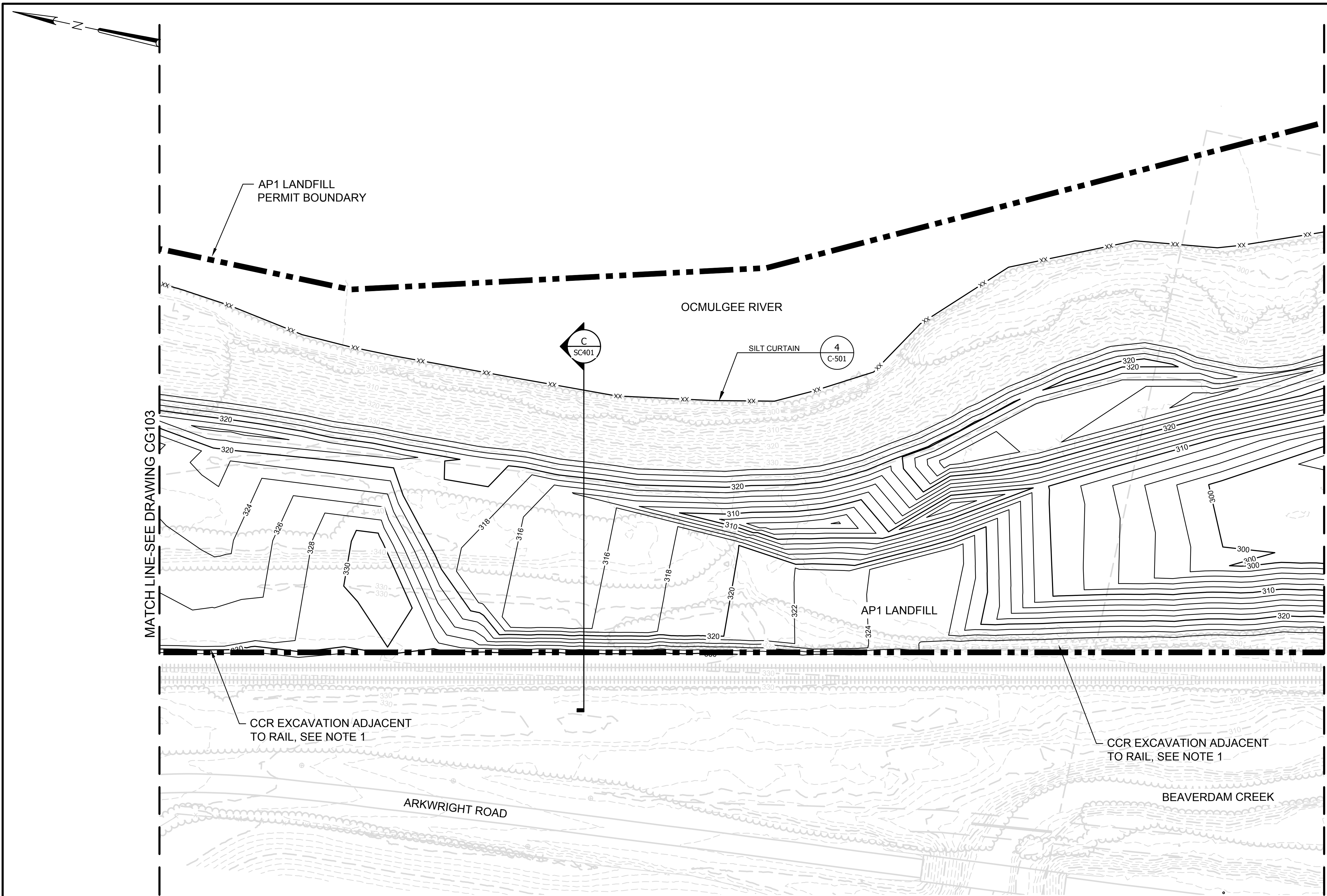
REV.	DATE	DESCRIPTION

404.978.7600 JACOBS.COM		Ten 10th Street NW, Suite 1400, Atlanta, GA 30309	
PROJ. NO.	35DK9206	DWG.	CG103
SCALE	AS SHOWN		
DATE	NOVEMBER 2018	SHEET	6 OF 15



NOTES:

1. CCR EXCAVATION ADJACENT TO EXISTING RAILROAD SHALL BE KEPT A MINIMUM DISTANCE OF 15' FROM CENTERLINE OF RAIL.
2. DURING CCR REMOVAL, SOIL BERMS SHALL BE CONSTRUCTED WITHIN THE EXCAVATION TO PROVIDE STORMWATER CONTROL. SEE DETAIL 2, DRAWING C-501 FOR TYPICAL STORMWATER DIVERSION BERM.
3. PROPOSED CONTOURS SHOWN REPRESENT THE ANTICIPATED EXTENT OF CCR TO BE EXCAVATED DURING PHASE 1. AN ADDITIONAL 6 INCHES OF MATERIAL SHALL BE EXCAVATED BEYOND THE EXTENT OF CCR EXCEPT FOR THE BENEFICIAL REUSE AREAS.
4. FOR LEGEND SEE DRAWING C-002.
5. ACTUAL EXCAVATION SEQUENCE WILL BE BASED ON FIELD CONDITIONS AND ADJUSTED AS NEEDED TO APPROPRIATELY HANDLE STORMWATER AND CONTACT WATER.



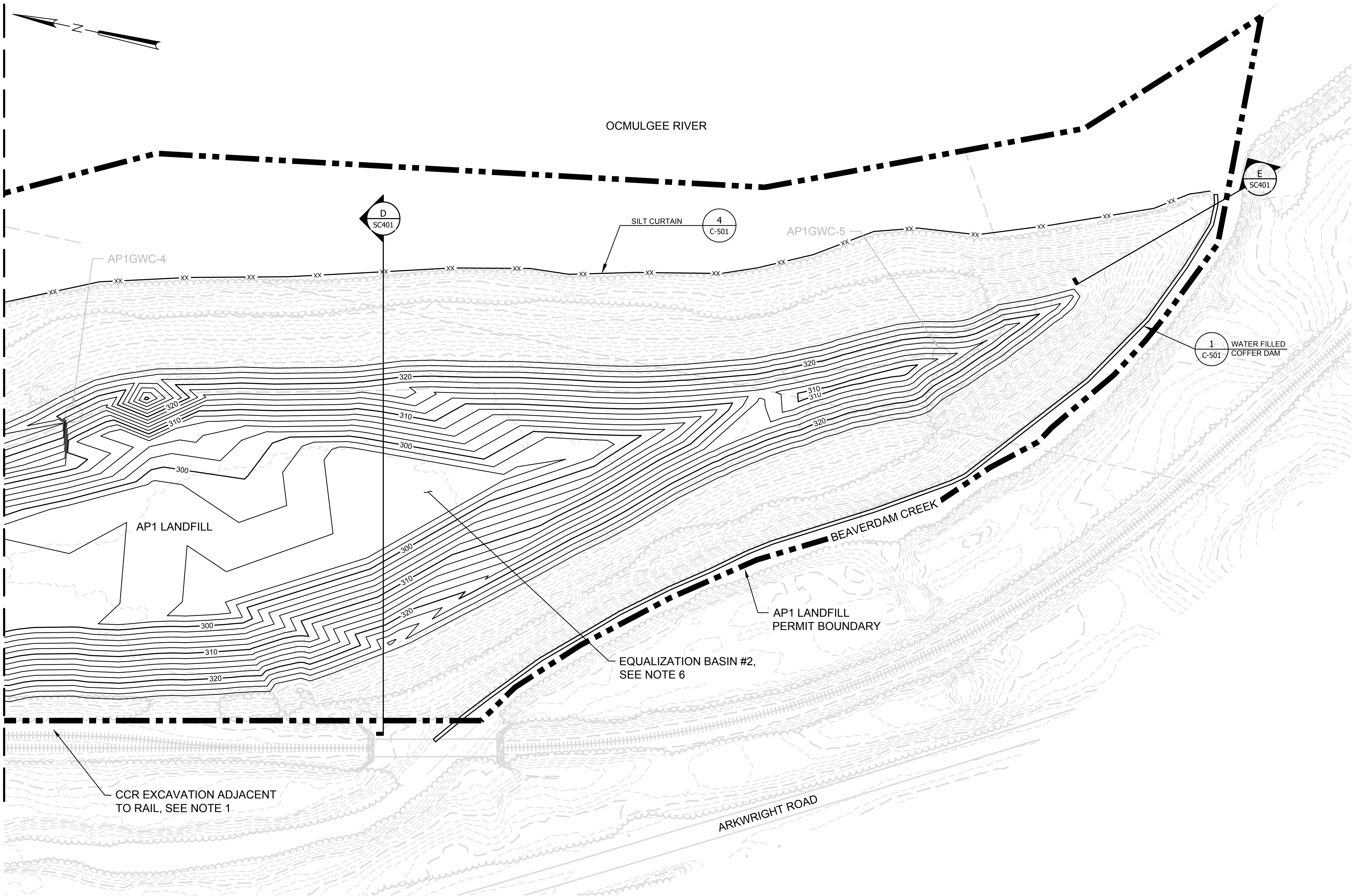
PHASE I CCR EXCAVATION (2 OF 3)

AP1 LANDFILL
FOR
GEORGIA POWER COMPANY
FORMER PLANT ARKWRIGHT
MACON - BIBB COUNTY, GA



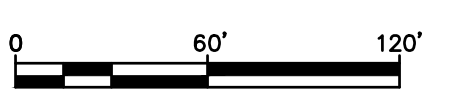
REV.	DATE	DESCRIPTION

404.978.7600 JACOBS.COM		Ten 10th Street NW, Suite 1400, Atlanta, GA 30309	
PROJ. NO.	35DK9206	DWG.	CG104
SCALE	AS SHOWN	EDIT	
DATE	NOVEMBER 2018	SHEET 7 OF 15	



- NOTES:**
- CCR EXCAVATION ADJACENT TO EXISTING RAILROAD SHALL BE KEPT A MINIMUM DISTANCE OF 15' FROM CENTERLINE OF RAIL.
 - DURING CCR REMOVAL, SOIL BERMS SHALL BE CONSTRUCTED WITHIN THE EXCAVATION TO PROVIDE STORMWATER CONTROL. SEE DETAIL 2, DRAWING C-501 FOR TYPICAL STORMWATER DIVERSION BERM.
 - PROPOSED CONTOURS SHOWN REPRESENT THE ANTICIPATED EXTENT OF CCR TO BE EXCAVATED DURING PHASE 1. AN ADDITIONAL 6 INCHES OF MATERIAL SHALL BE EXCAVATED BEYOND THE EXTENT OF CCR EXCEPT FOR THE BENEFICIAL REUSE AREAS.
 - FOR LEGEND SEE DRAWING C-002.
 - ACTUAL EXCAVATION SEQUENCE WILL BE BASED ON FIELD CONDITIONS AND ADJUSTED AS NEEDED TO APPROPRIATELY HANDLE STORMWATER AND CONTACT WATER.
 - EQUALIZATION BASIN TO PROVIDE TEMPORARY INTERNAL RETENTION OF STORMWATER RUNOFF DURING REMOVAL.

MATCH LINE-SEE DRAWING CG103



PHASE I CCR EXCAVATION (3 OF 3)

AP1 LANDFILL

FOR
 GEORGIA POWER COMPANY
 FORMER PLANT ARKWRIGHT
 MACON - BIBB COUNTY, GA

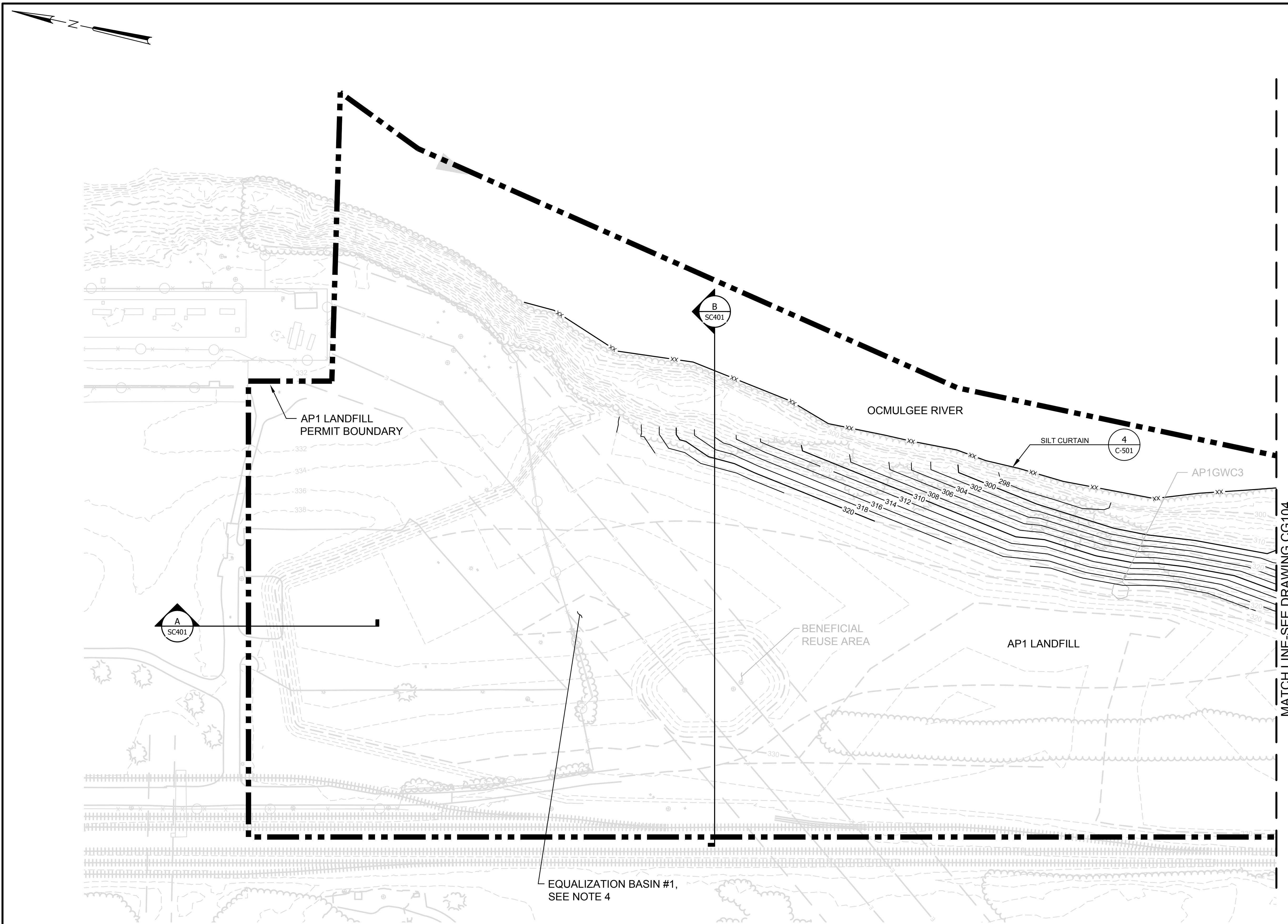


REV.	DATE	DESCRIPTION

404.978.7600 JACOBS.COM		Ten 10th Street NW, Suite 1400, Atlanta, GA 30309	
PROJ. NO.	35DK9206	DWG.	CG105
SCALE	AS SHOWN		
DATE	NOVEMBER 2018	SHEET	8 OF 15

NOTES:

1. PROPOSED CONTOURS SHOWN REPRESENT THE ANTICIPATED EXTENT OF CCR TO BE EXCAVATED DURING PHASE II. AN ADDITIONAL 6 INCHES OF MATERIAL SHALL BE EXCAVATED BEYOND THE EXTENT OF CCR EXCEPT FOR THE BENEFICIAL REUSE AREAS.
2. FOR LEGEND SEE DRAWING C-002.
3. ACTUAL EXCAVATION SEQUENCE WILL BE BASED ON FIELD CONDITIONS AND ADJUSTED AS NEEDED TO APPROPRIATELY HANDLE STORMWATER AND CONTACT WATER.
4. EQUALIZATION BASIN TO PROVIDE TEMPORARY INTERNAL RETENTION OF STORMWATER RUNOFF DURING REMOVAL.
5. DURING CCR REMOVAL, SOIL BERMS SHALL BE CONSTRUCTED WITHIN THE EXCAVATION TO PROVIDE STORMWATER CONTROL. SEE DETAIL 2, DRAWING C-501 FOR TYPICAL STORMWATER DIVERSION BERM.



MATCH LINE-SEE DRAWING CG104



PHASE II CCR EXCAVATION (1 OF 3)

AP1 LANDFILL
FOR
GEORGIA POWER COMPANY
FORMER PLANT ARKWRIGHT
MACON - BIBB COUNTY, GA

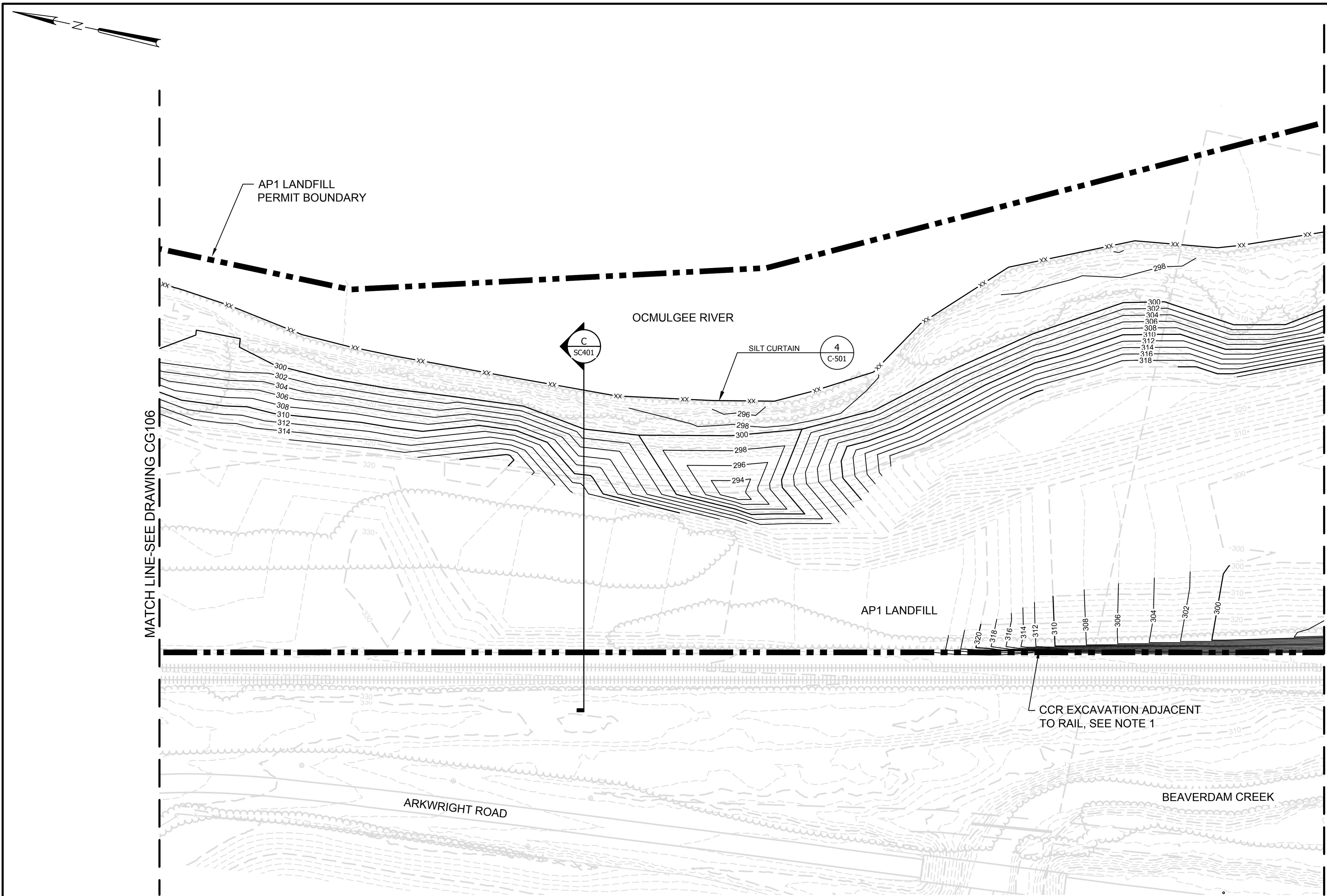


REV.	DATE	DESCRIPTION

404.978.7600 JACOBS.COM		Ten 10th Street NW, Suite 1400, Atlanta, GA 30309	
PROJ. NO.	35DK9206	DWG.	CG106
SCALE	AS SHOWN	EDIT	
DATE	NOVEMBER 2018	SHEET	9 OF 15

NOTES:

1. CCR EXCAVATION ADJACENT TO EXISTING RAILROAD SHALL BE KEPT A MINIMUM DISTANCE OF 15' FROM CENTERLINE OF RAIL.
2. DURING CCR REMOVAL, SOIL BERMS SHALL BE CONSTRUCTED WITHIN THE EXCAVATION TO PROVIDE STORMWATER CONTROL. SEE DETAIL 2, DRAWING C-501 FOR TYPICAL STORMWATER DIVERSION BERM.
3. PROPOSED CONTOURS SHOWN REPRESENT THE ANTICIPATED EXTENT OF CCR TO BE EXCAVATED DURING PHASE 1. AN ADDITIONAL 6 INCHES OF MATERIAL SHALL BE EXCAVATED BEYOND THE EXTENT OF CCR EXCEPT FOR THE BENEFICIAL REUSE AREAS.
4. FOR LEGEND SEE DRAWING C-002.
5. ACTUAL EXCAVATION SEQUENCE WILL BE BASED ON FIELD CONDITIONS AND ADJUSTED AS NEEDED TO APPROPRIATELY HANDLE STORMWATER AND CONTACT WATER.



PHASE II CCR EXCAVATION (2 OF 3)

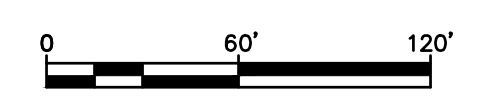
AP1 LANDFILL
FOR
GEORGIA POWER COMPANY
FORMER PLANT ARKWRIGHT
MACON - BIBB COUNTY, GA

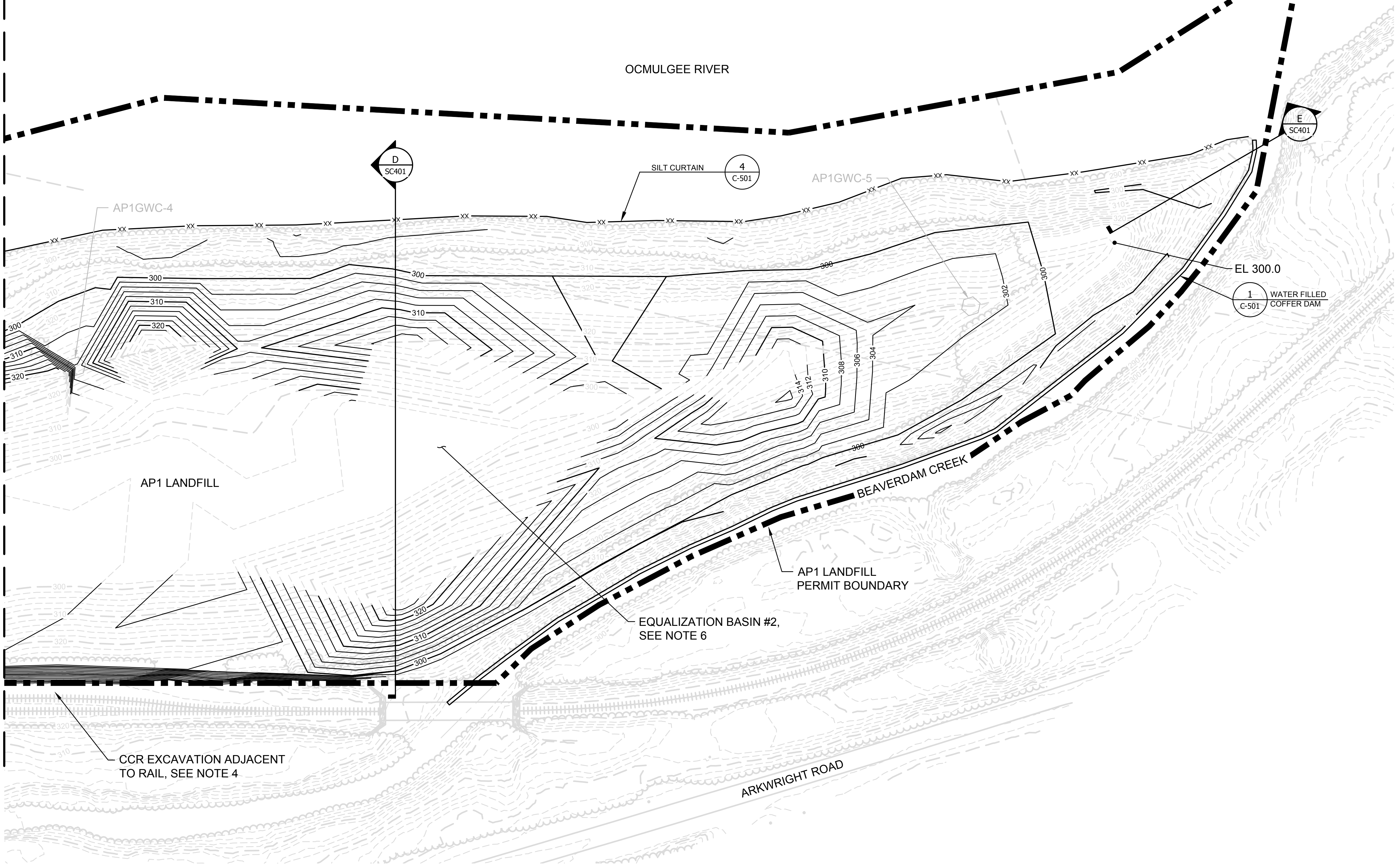
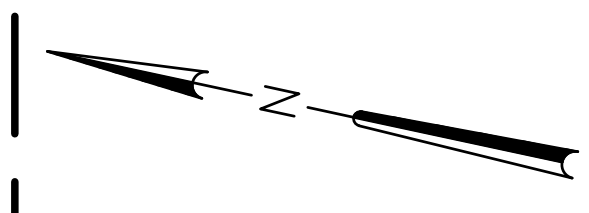
JACOBS



REV.	DATE	DESCRIPTION

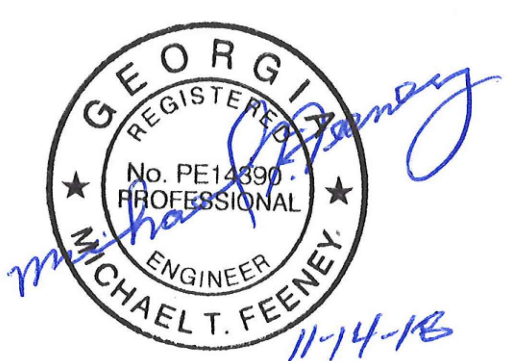
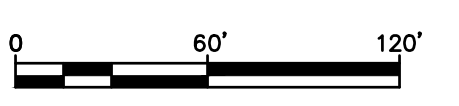
404.978.7600 JACOBS.COM		Ten 10th Street NW, Suite 1400, Atlanta, GA 30309	
PROJ. NO.	35DK9206	DWG.	CG107
SCALE	AS SHOWN	EDIT	
DATE	NOVEMBER 2018	SHEET 10 OF 15	





- NOTES:**
1. PROPOSED CONTOURS SHOWN REPRESENT THE ANTICIPATED EXTENT OF CCR TO BE EXCAVATED DURING PHASE II. AN ADDITIONAL 6 INCHES OF MATERIAL SHALL BE EXCAVATED BEYOND THE EXTENT OF CCR EXCEPT FOR THE BENEFICIAL REUSE AREAS.
 2. FOR LEGEND SEE DRAWING C-002.
 3. ACTUAL EXCAVATION SEQUENCE WILL BE BASED ON FIELD CONDITIONS AND ADJUSTED AS NEEDED TO APPROPRIATELY HANDLE STORMWATER AND CONTACT WATER.
 4. CCR EXCAVATION ADJACENT TO EXISTING RAILROAD SHALL BE KEPT A MINIMUM DISTANCE OF 15' FROM CENTERLINE OF RAIL.
 5. DURING CCR REMOVAL, SOIL BERMS SHALL BE CONSTRUCTED WITHIN THE EXCAVATION TO PROVIDE STORMWATER CONTROL. SEE DETAIL 2, DRAWING C-501 FOR TYPICAL STORMWATER DIVERSION BERM.
 6. EQUALIZATION BASIN TO PROVIDE TEMPORARY INTERNAL RETENTION OF STORMWATER RUNOFF DURING REMOVAL.

MATCH LINE-SEE DRAWING CG103



PHASE II CCR EXCAVATION (3 OF 3)

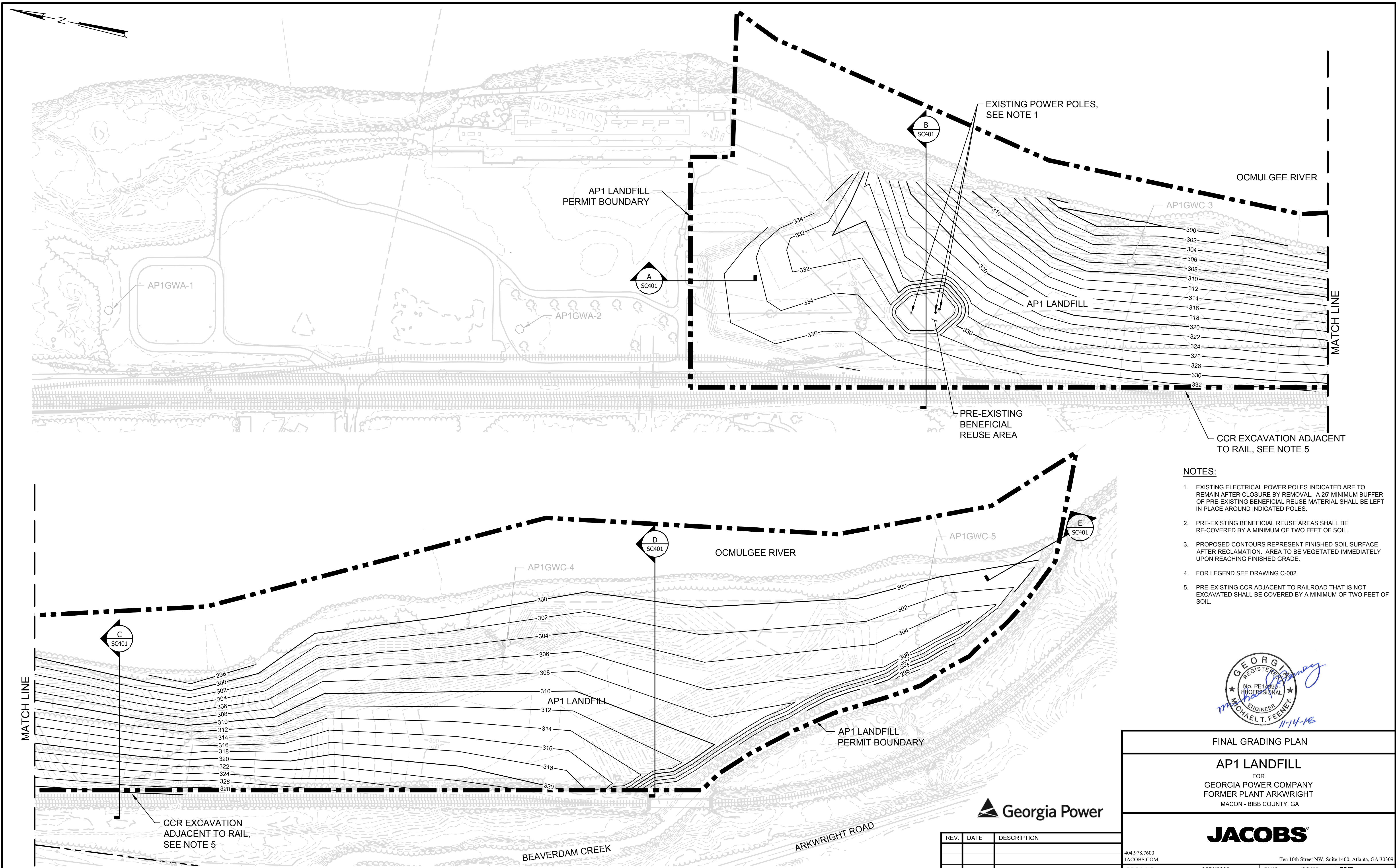
AP1 LANDFILL
FOR
GEORGIA POWER COMPANY
FORMER PLANT ARKWRIGHT
MACON - BIBB COUNTY, GA



JACOBS

REV.	DATE	DESCRIPTION

404.978.7600 JACOBS.COM		Ten 10th Street NW, Suite 1400, Atlanta, GA 30309	
PROJ. NO.	35DK9206	DWG.	CG108
SCALE	AS SHOWN	EDIT	
DATE	NOVEMBER 2018	SHEET 11 OF 15	



- NOTES:**
- EXISTING ELECTRICAL POWER POLES INDICATED ARE TO REMAIN AFTER CLOSURE BY REMOVAL. A 25' MINIMUM BUFFER OF PRE-EXISTING BENEFICIAL REUSE MATERIAL SHALL BE LEFT IN PLACE AROUND INDICATED POLES.
 - PRE-EXISTING BENEFICIAL REUSE AREAS SHALL BE RE-COVERED BY A MINIMUM OF TWO FEET OF SOIL.
 - PROPOSED CONTOURS REPRESENT FINISHED SOIL SURFACE AFTER RECLAMATION. AREA TO BE VEGETATED IMMEDIATELY UPON REACHING FINISHED GRADE.
 - FOR LEGEND SEE DRAWING C-002.
 - PRE-EXISTING CCR ADJACENT TO RAILROAD THAT IS NOT EXCAVATED SHALL BE COVERED BY A MINIMUM OF TWO FEET OF SOIL.

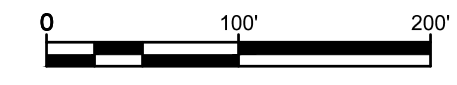


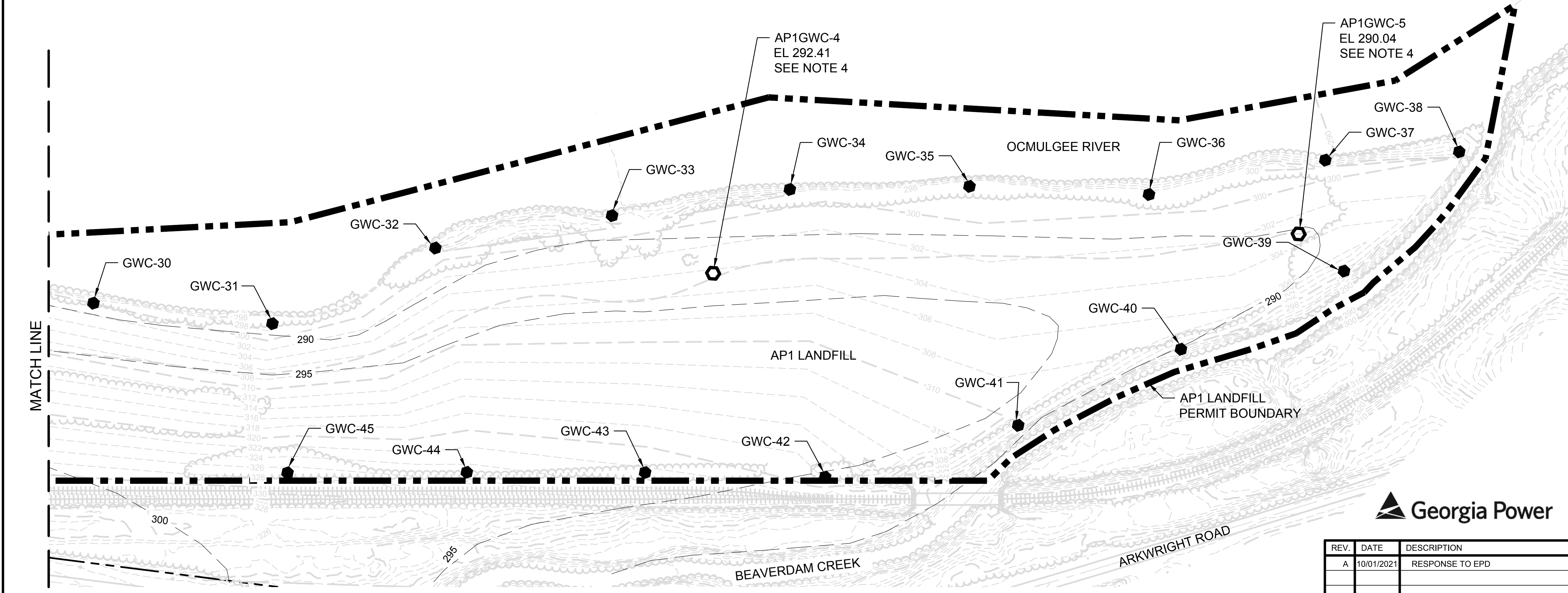
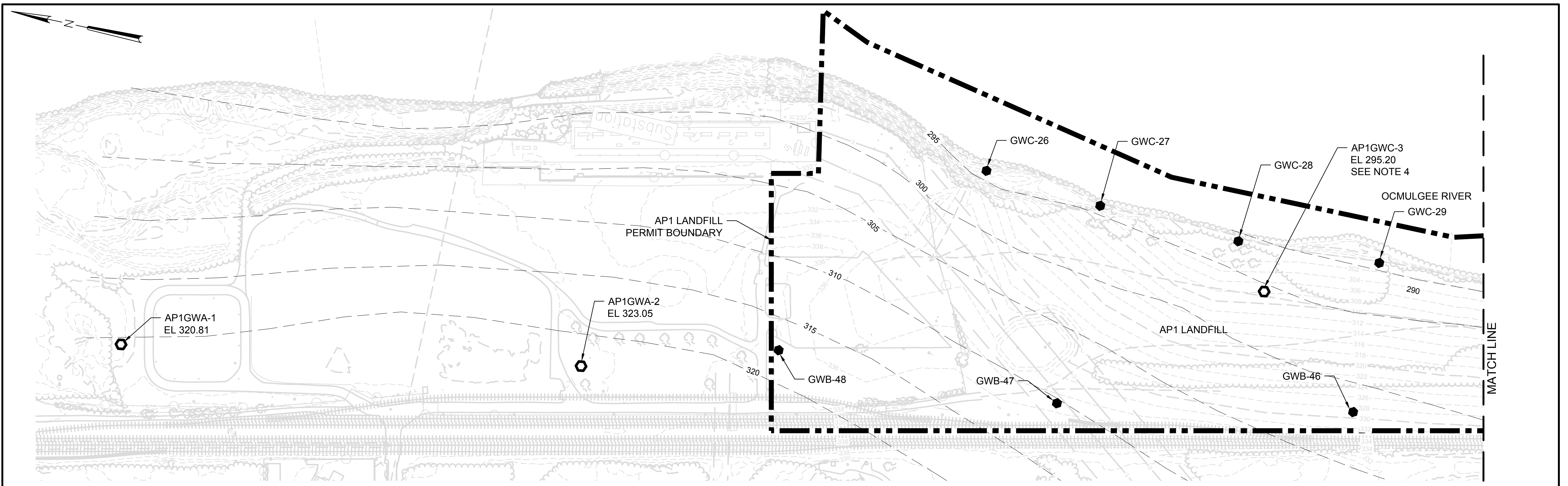
FINAL GRADING PLAN
 AP1 LANDFILL
 FOR
 GEORGIA POWER COMPANY
 FORMER PLANT ARKWRIGHT
 MACON - BIBB COUNTY, GA



REV.	DATE	DESCRIPTION

404.978.7600 JACOBS.COM	Ten 10th Street NW, Suite 1400, Atlanta, GA 30309		
PROJ. NO. 35DK9206	DWG. CG109	EDIT	
SCALE AS SHOWN	SHEET 12 OF 15		
DATE NOVEMBER 2018			





- NOTES:**
- EXISTING CONTOURS SHOWN REPRESENT ANTICIPATED CONDITIONS AFTER FINAL GRADING HAS BEEN COMPLETED.
 - FOR LEGEND SEE DRAWING C-002.
 - POTENTIOMETRIC CONTOURS BASED ON WATER LEVEL MEASUREMENTS TAKEN ON 09-11-2018.
 - GROUNDWATER MONITORING WELLS AP1GWC-3, AP1GWC-4, AND AP1GWC-5 WERE PREVIOUSLY ABANDONED.



REV.	DATE	DESCRIPTION
A	10/01/2021	RESPONSE TO EPD

SITE MONITORING PLAN

AP1 LANDFILL

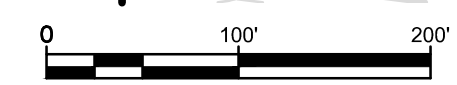
FOR
GEORGIA POWER COMPANY
FORMER PLANT ARKWRIGHT
MACON - BIBB COUNTY, GA

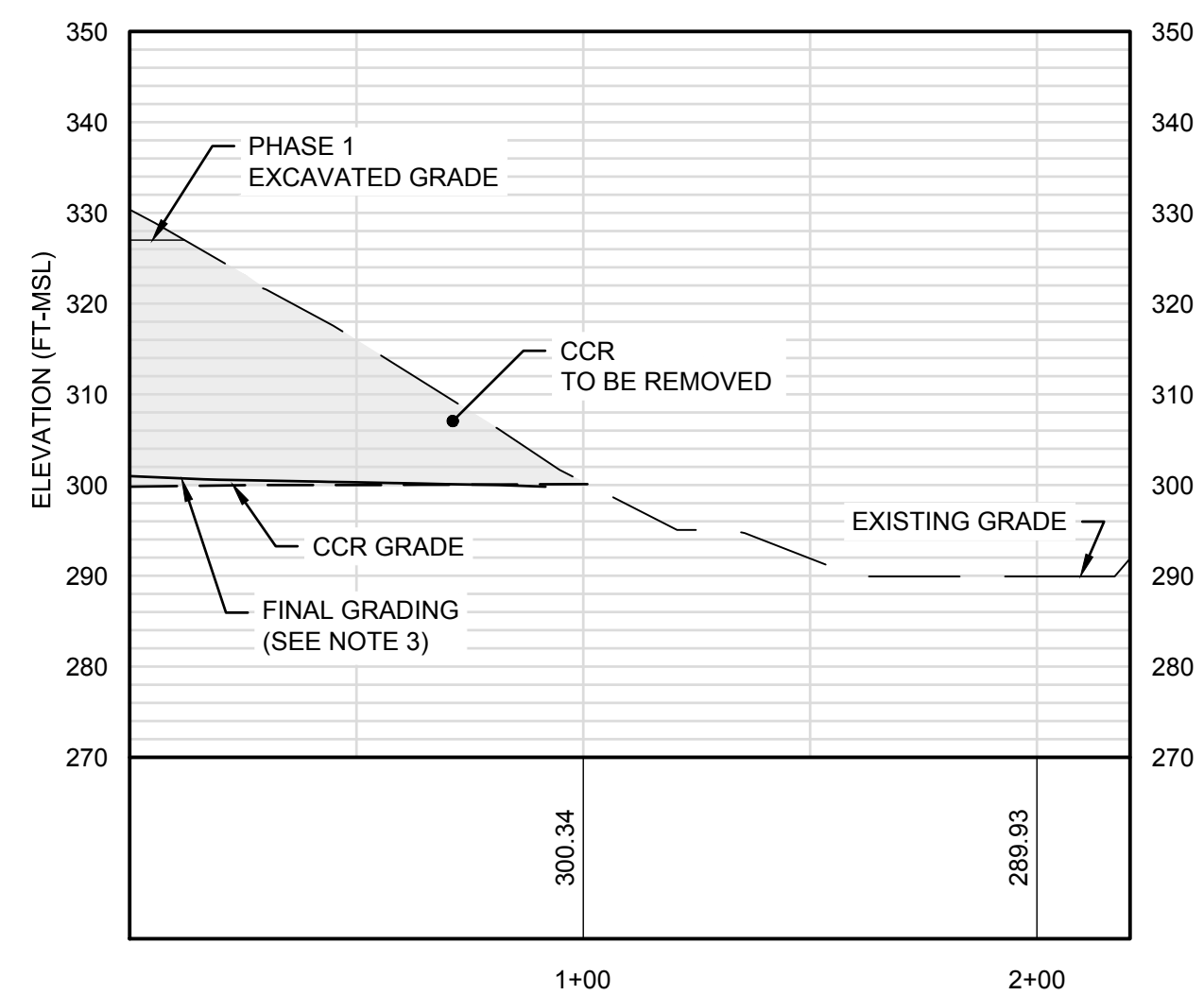
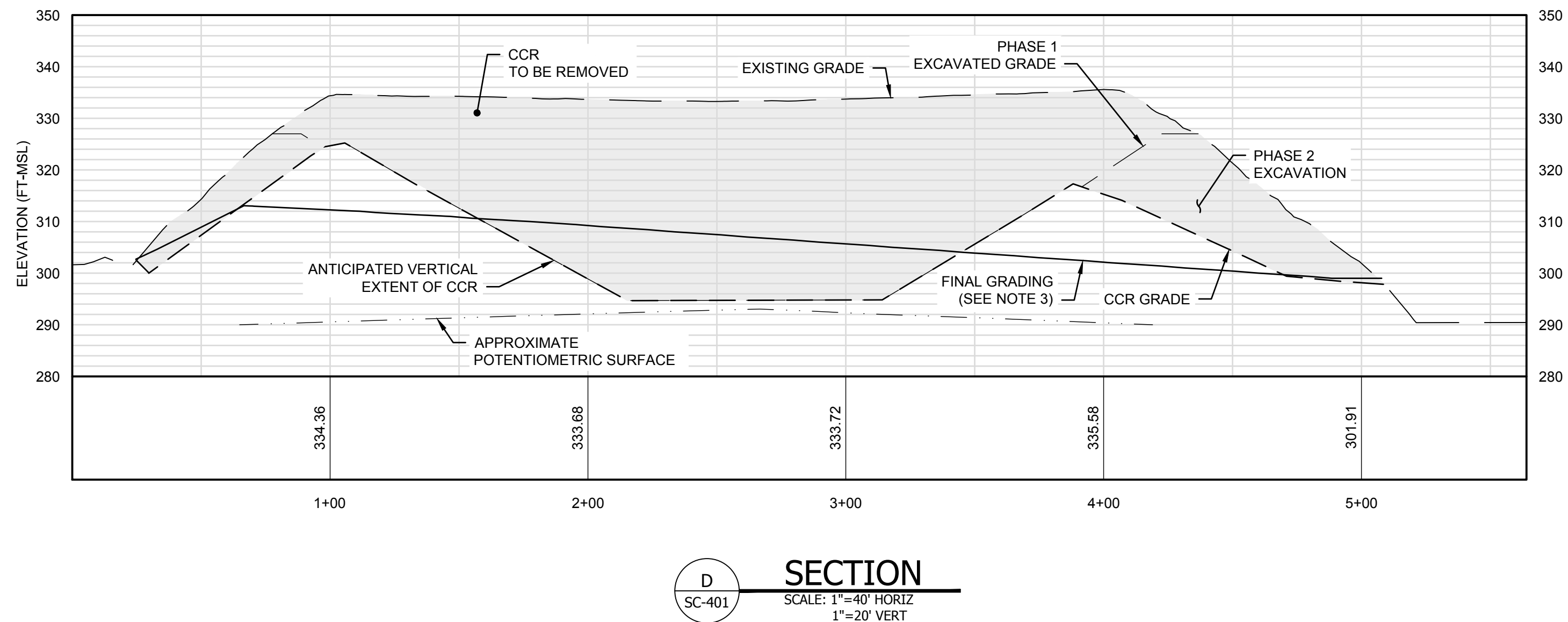
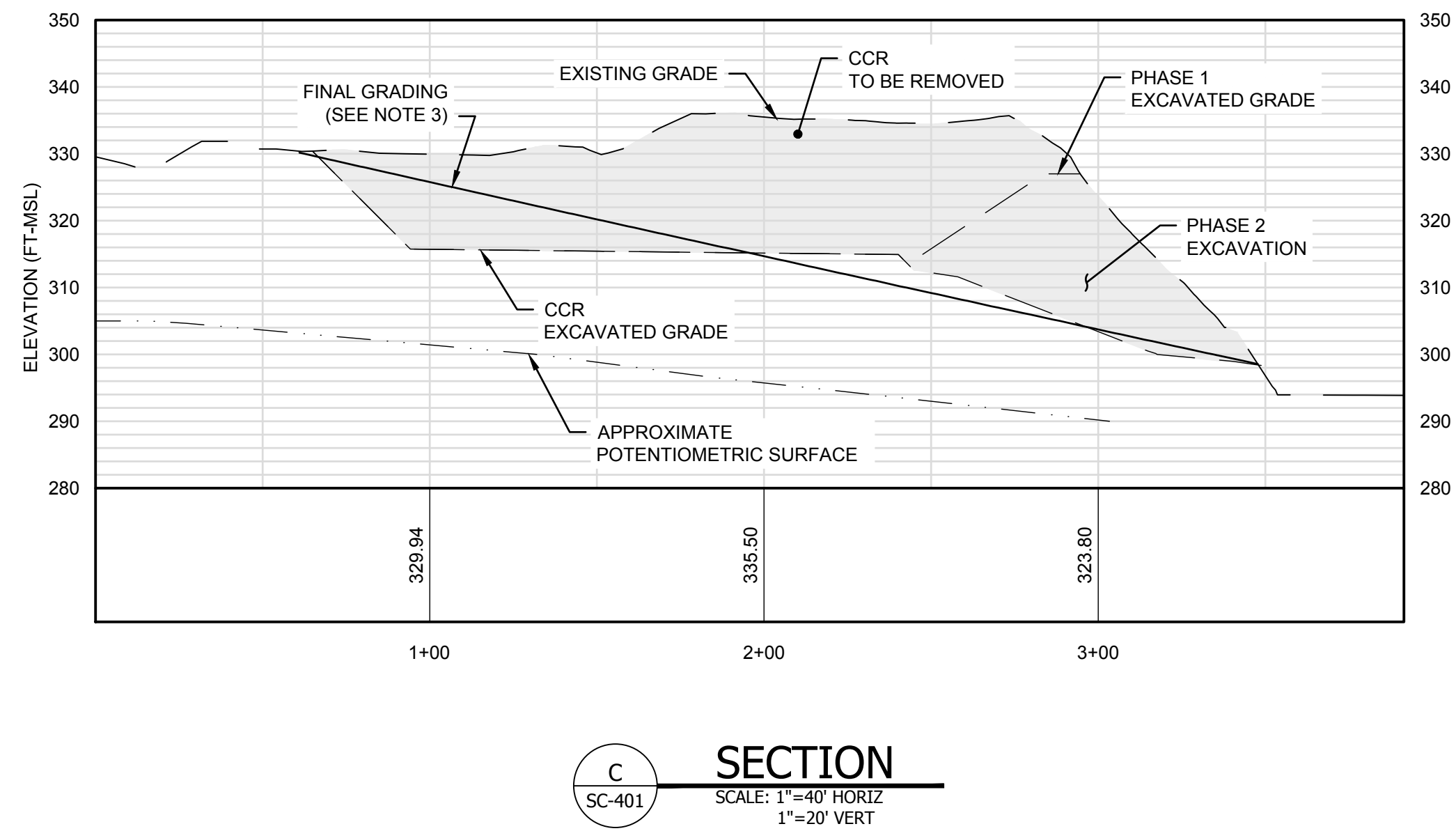
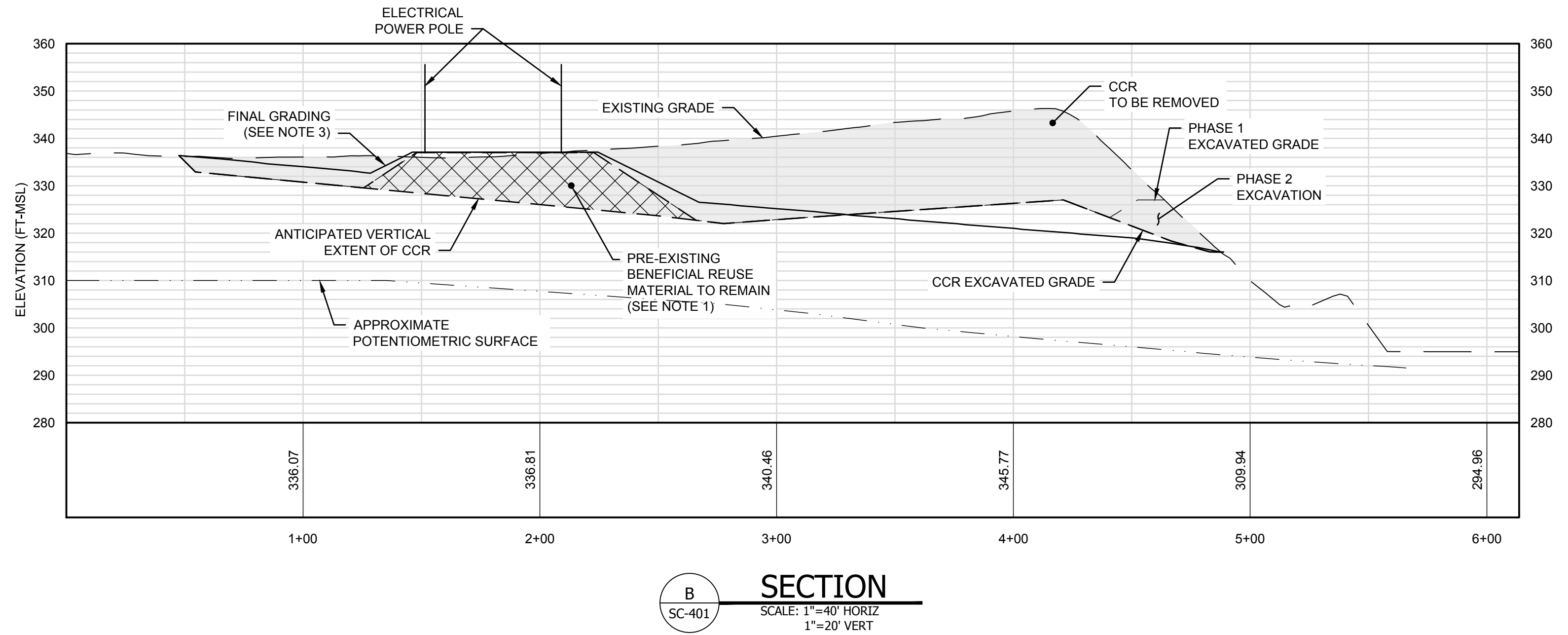
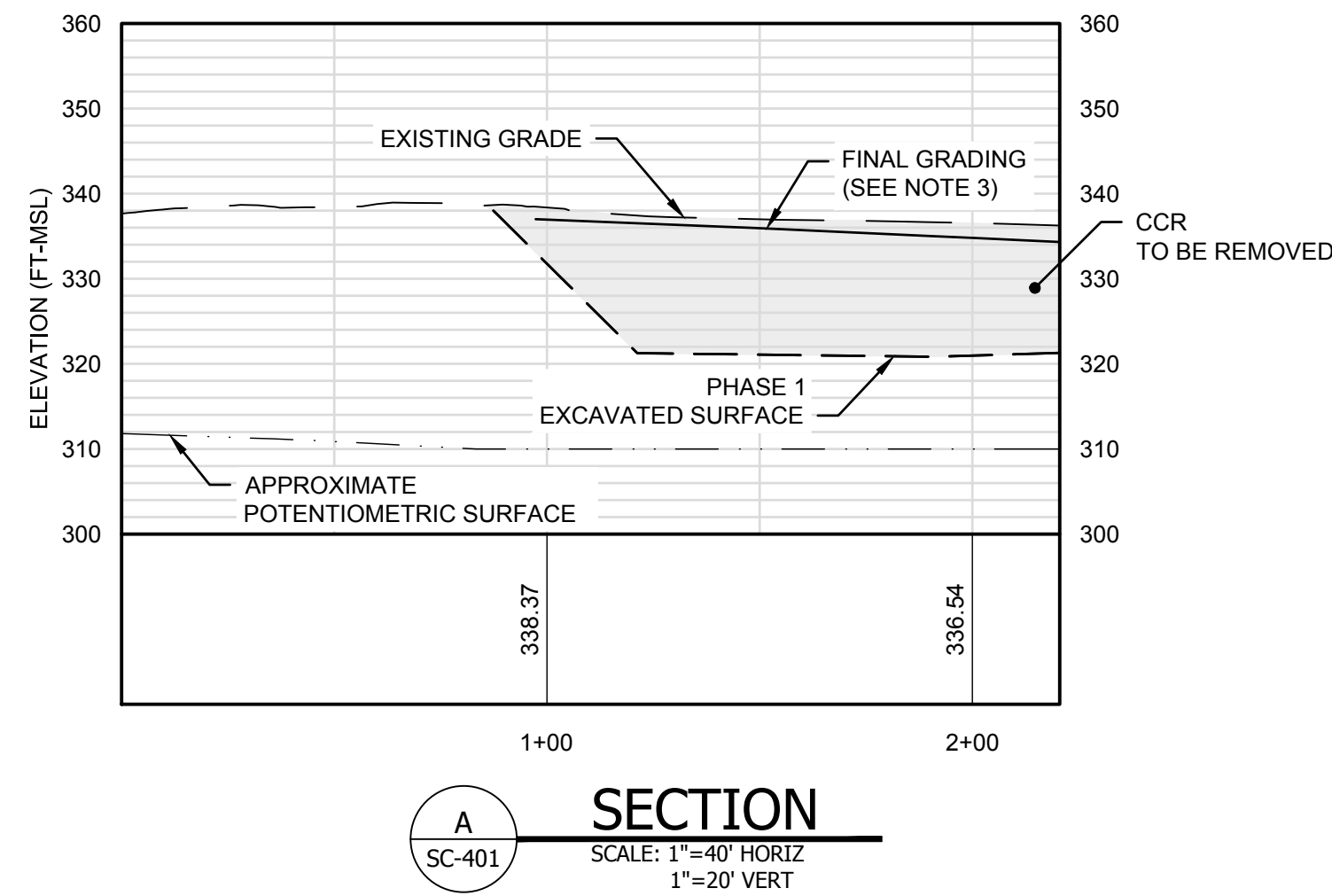
JACOBS

404.978.7600
JACOBS.COM
Ten 10th Street NW, Suite 1400, Atlanta, GA 30309

PROJ. NO.	D3442700	DWG.	CS101	EDIT
SCALE	AS SHOWN			
DATE	OCTOBER 2021			

SHEET 13 OF 15



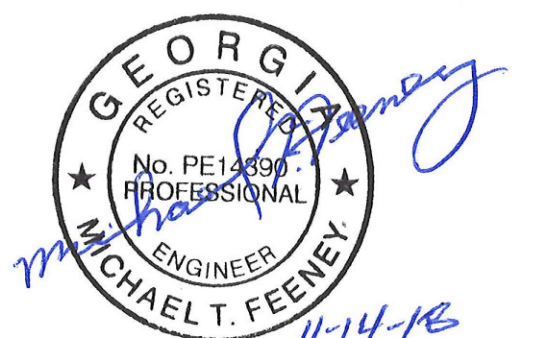


NOTES:

1. PRE-EXISTING BENEFICIAL REUSE AREAS SHALL BE RE-COVERED BY A MINIMUM OF TWO FEET OF SOIL.
2. POTENTIOMETRIC SURFACE BASED ON WATER LEVEL MEASUREMENTS TAKEN ON 09-11-2018.
3. CCR REMOVAL AREAS BELOW THE FINAL GRADING ELEVATIONS WILL BE BACKFILLED WITH SOIL.

LEGEND

- CCR TO BE REMOVED
- PRE-EXISTING BENEFICIAL REUSE MATERIAL TO REMAIN



REV.	DATE	DESCRIPTION

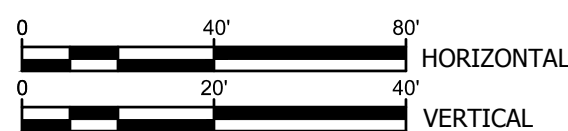
CROSS SECTIONS

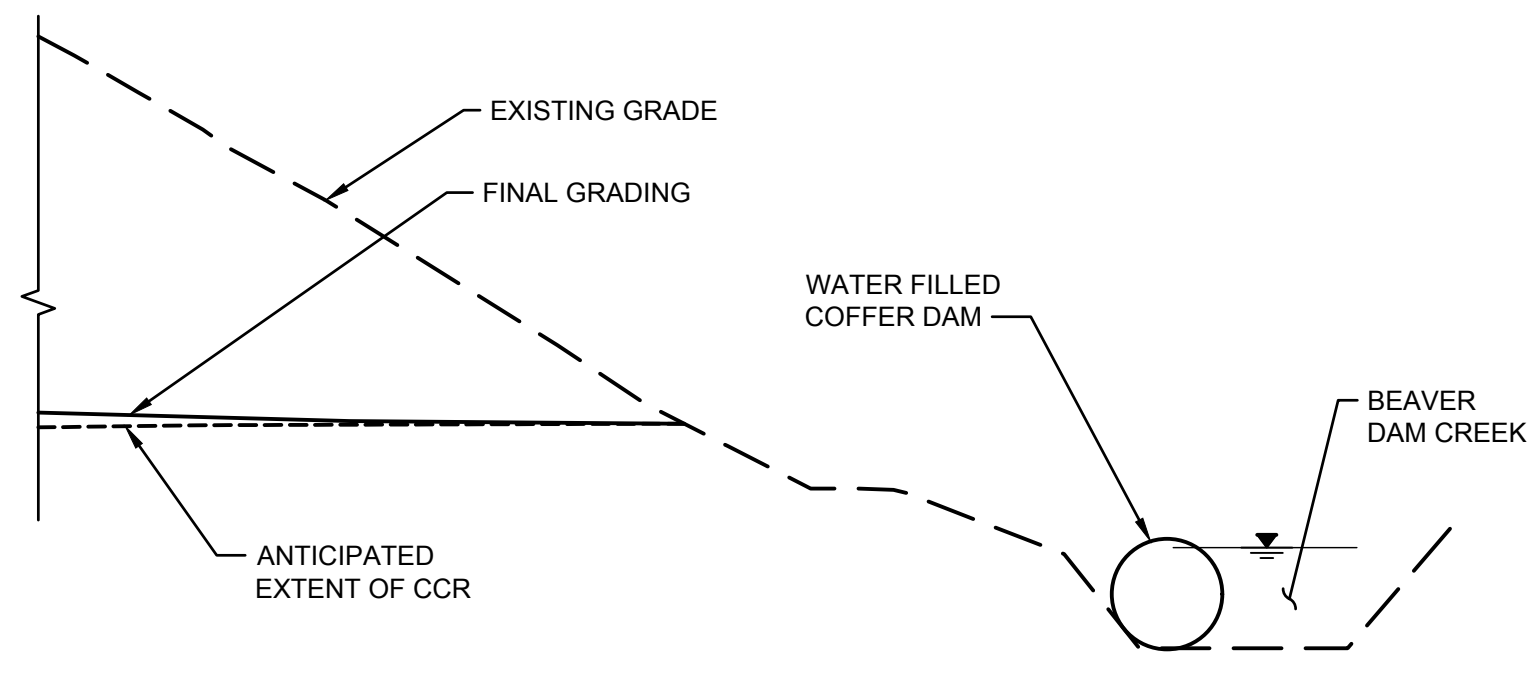
AP1 LANDFILL
 FOR
 GEORGIA POWER COMPANY
 FORMER PLANT ARKWRIGHT
 MACON - BIBB COUNTY, GA

JACOBS

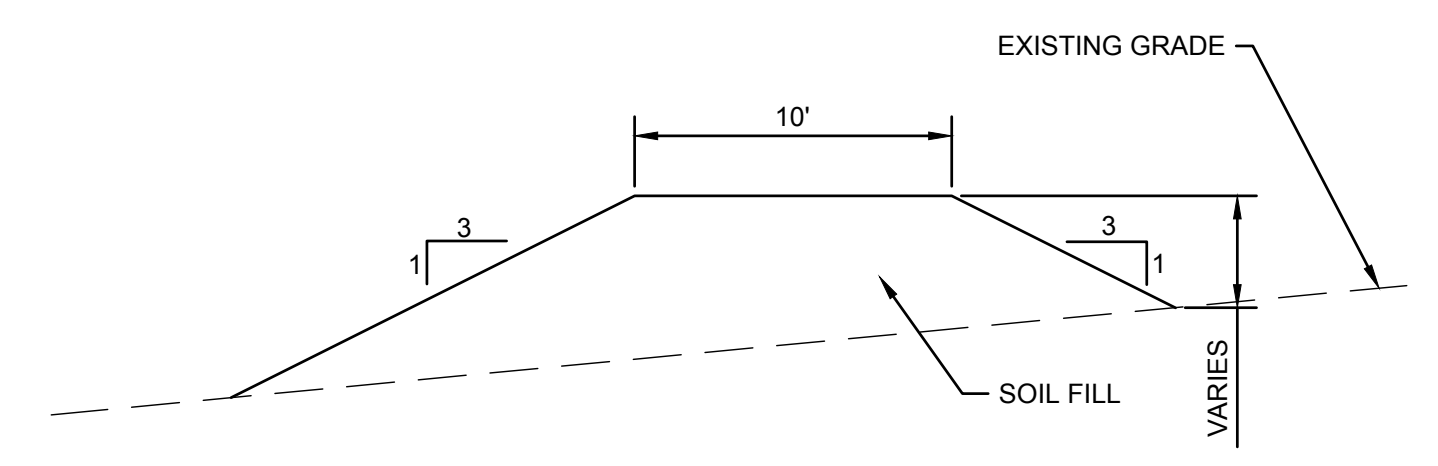
404.978.7600
 JACOBS.COM
 Ten 10th Street NW, Suite 1400, Atlanta, GA 30309

PROJ. NO.	35DK9206	DWG.	SC401	EDIT
SCALE	AS SHOWN			
DATE	NOVEMBER 2018	SHEET 14 OF 15		

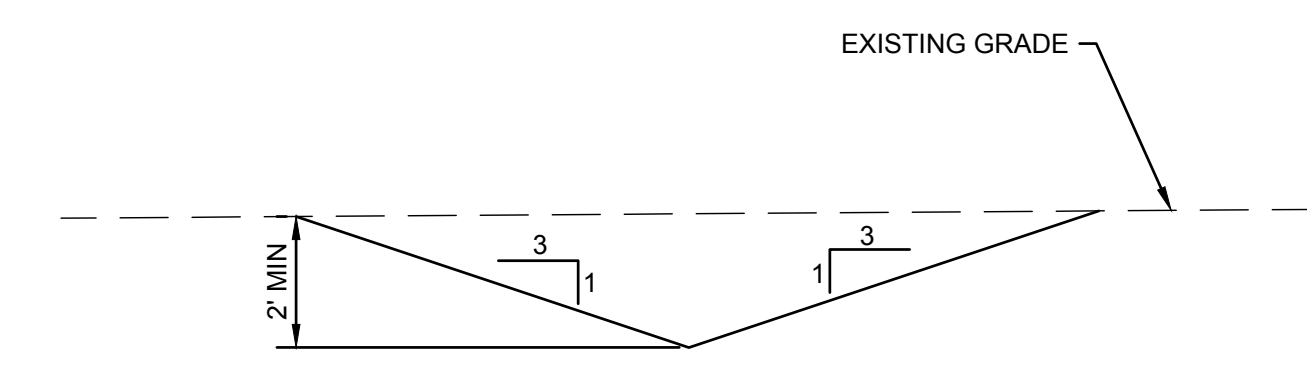




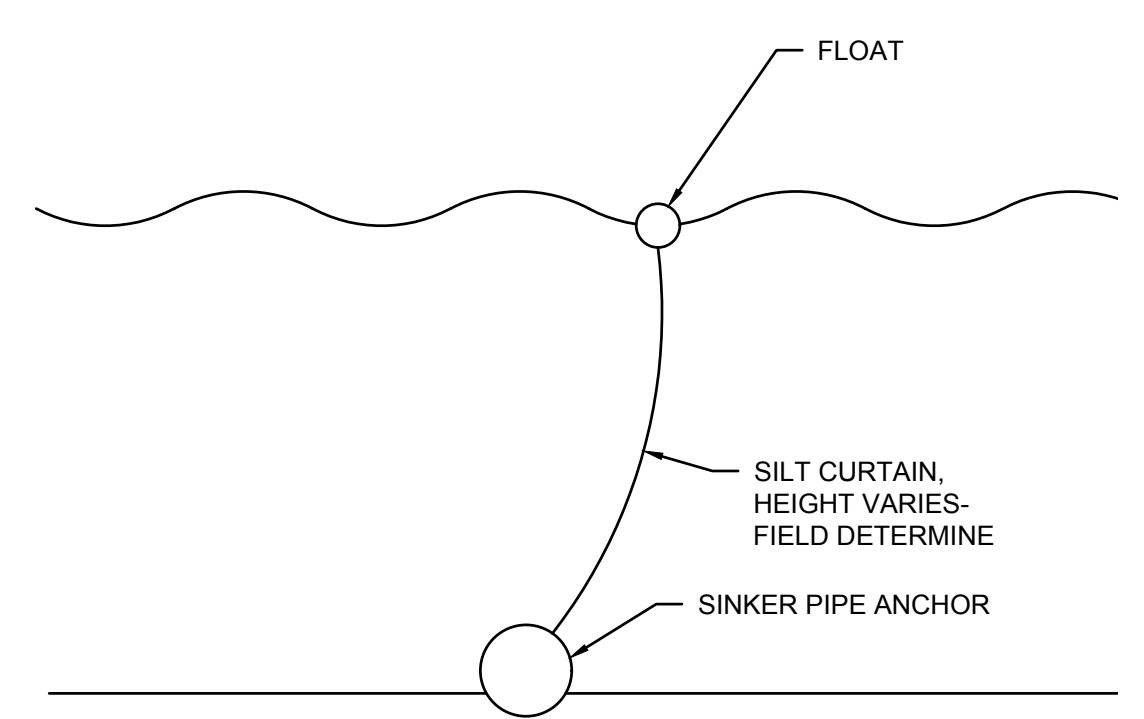
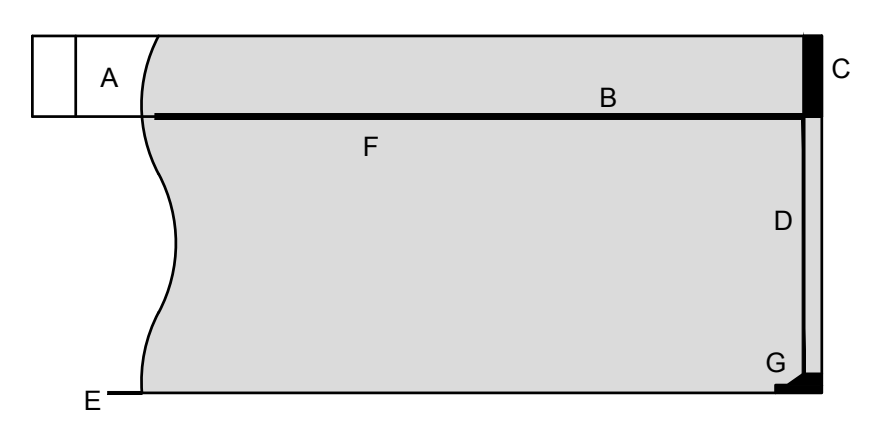
1 TYPICAL WATER FILLED COFFER DAM
C-501 NOT TO SCALE



2 TYPICAL STORM WATER DIVERSION BERM
C-501 NOT TO SCALE



3 TYPICAL DRAINAGE DITCH
C-501 NOT TO SCALE



ELEVATION

SECTION

- A 12" CLOSED FOAM FLOAT
- B 5/8" DUAL TOP TENSION CABLE
- C BULK SLIDE STEEL CONNECTOR
- D REINFORCED GROMMETS
- E 3/4" BOTTOM BALLAST CHAIN
- F EYE BOLT ANCHOR POINT
- G STRESS PLATE W/SHACKLE CONNECTOR

4 TYPICAL SILT CURTAIN
C-501 NOT TO SCALE



DETAILS
AP1 LANDFILL
FOR
GEORGIA POWER COMPANY
FORMER PLANT ARKWRIGHT
MACON - BIBB COUNTY, GA



REV.	DATE	DESCRIPTION

404.978.7600 JACOBS.COM	Ten 10th Street NW, Suite 1400, Atlanta, GA 30309		
PROJ. NO.	35DK9206	DWG.	C-501 EDIT
SCALE	AS SHOWN	SHEET 15 OF 15	
DATE	NOVEMBER 2018		