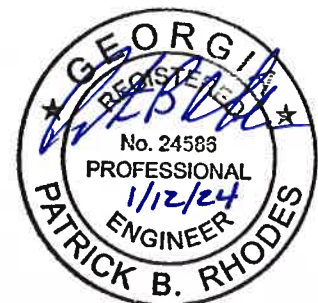


257.83 (b) (2)	REPORT OF ANNUAL INSPECTION OF CCR SURFACE IMPOUNDMENT		
	FACILITY NAME: Plant Scherer Ash Pond		
	OWNER/OPERATOR OF FACILITY: Georgia Power Company		
	INSPECTION DATE: October 17, 2023		
	INSPECTING ENGINEER: Patrick B. Rhodes, P.E. (Georgia P.E. License #24586)		
(i)	ANY CHANGES IN GEOMETRY OF THE IMPOUNDING STRUCTURE SINCE THE PREVIOUS ANNUAL INSPECTION?	No	
	(IF YES, DESCRIBE):		
(ii)	LOCATION AND TYPE OF EXISTING INSTRUMENTATION	See Attached Plans	
(ii)	MAXIMUM RECORDED READING OF EACH INSTRUMENT SINCE PREVIOUS ANNUAL INSPECTION	See Attached Tables	
	APPROXIMATE MINIMUM, MAXIMUM AND PRESENT DEPTH AND ELEVATION OF THE IMPOUNDED WATER SINCE PREVIOUS ANNUAL INSPECTION		
	MIN. DEPTH: 0 ft ⁽¹⁾	MAX. DEPTH: 61.5 ft	PRESENT DEPTH: Up to 61.0 ft
	MIN. ELEVATION: 492.5 ft	MAX. ELEVATION: 493.5 ft	PRESENT. ELEVATION: 493.0 ft
(iii)	APPROXIMATE MINIMUM, MAXIMUM AND PRESENT DEPTH AND ELEVATION OF CCR SINCE PREVIOUS ANNUAL INSPECTION.		
	MIN. DEPTH: 1 ft	MAX. DEPTH: 87 ft	PRESENT DEPTH: Up to 87 FT
(iv)	MIN. ELEVATION: 420 ft	MAX. ELEVATION: 505 ft ⁽¹⁾	PRESENT ELEVATION: Up to 505 ft ⁽¹⁾
(iv)	APPROXIMATE STORAGE CAPACITY OF IMPOUNDING STRUCTURE AT TIME OF INSPECTION.	29,846,667 yd ³	
(v)	APPROXIMATE VOLUME OF IMPOUNDED WATER AND CCR AT TIME OF INSPECTION	WATER: 11,021,000 yd ³	CCR: Approx 15,300,000 yd ³
(vi)	ANY APPEARANCE OF AN ACTUAL OR POTENTIAL STRUCTURAL WEAKNESS OF THE CCR UNIT, IN ADDITION TO ANY EXISTING CONDITIONS THAT ARE DISRUPTING OR HAVE THE POTENTIAL TO DISRUPT THE OPERATION AND SAFETY OF THE CCR UNIT AND APPURTENANT STRUCTURES?	No	
	(IF YES, DESCRIBE):		
(vii)	ANY OTHER CHANGE(S) WHICH MAY HAVE AFFECTED THE STABILITY OR OPERATION SINCE THE PREVIOUS ANNUAL INSPECTION?	No	
	(IF YES, DESCRIBE):		

- (1) An ash delta is present along the south end of the ash pond. Highest ash elevation of 505 ft occurs along the south end of the ash pond but not at the maximum depth of the ash pond.
- (2) Cubic yard estimates are derived by qualified personnel from available information.



**PLANT SCHERER ASH POND
MAXIMUM RECORDED READINGS OF INSTRUMENTATION**

PIEZOMETERS AT STATION 21+50

PIEZOMETER NUMBER	MAXIMUM RECORDED READING⁽¹⁾
AP10	EL 476
AP11	EL 477
AP13	EL 477
AP14	EL 478
APA2	EL 471
APA2A	EL 469
APA3	EL 472
APA3A	EL 474
APA4A	EL 477
APA5	EL 475
APA5A	EL 473
AP12R (AP12)	EL 478
AP12A	EL 467

(1) Maximum recorded reading since last annual inspection; rounded to the nearest foot.

PIEZOMETERS AT STATION 42+00

PIEZOMETER NUMBER	MAXIMUM RECORDED READING⁽¹⁾
AP1R	EL 439
AP2	EL 471
AP3	EL 436
AP4	EL 421
AP5	EL 420
AP8R	EL 411
AP9R	EL 412

(1) Maximum recorded reading since last annual inspection; rounded to the nearest foot.

PIEZOMETERS AT STATION 75+40

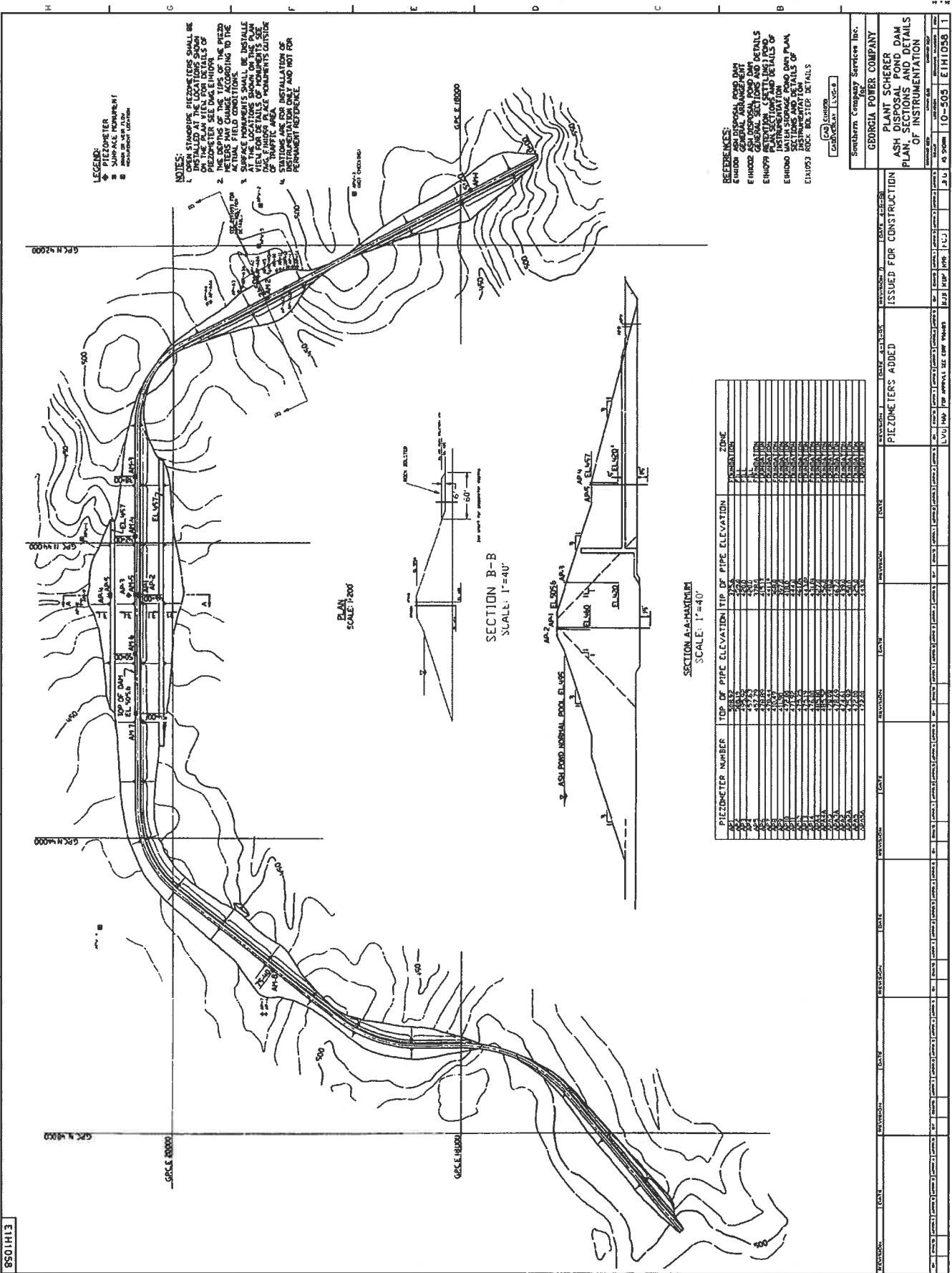
PIEZOMETER NUMBER	MAXIMUM RECORDED READING⁽¹⁾
AP6	EL 479
AP7	EL 478

(1) Maximum recorded reading since last annual inspection; rounded to the nearest foot.

TOE DRAIN SUMP FLOWS⁽¹⁾

PUMP NUMBER	MAXIMUM MEASURED FLOW
PS-1	23 gpm
PS-2	7 gpm
PS-5	32 gpm
PS-6	2.5 gpm

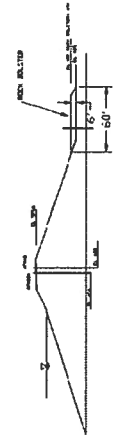
(1) Toe drain flows collected in a sump and pumped back into Ash Pond.



- LEGEND:**
- PIEZOMETER
 - SURFACE MONUMENT
 - MONUMENT LOCATION

- NOTES:**
1. DESIGN AND INSTALLATION OF PIEZOMETERS SHALL BE IN ACCORDANCE WITH THE DETAILS SHOWN ON THE PLAN WITH THE EXCEPTION OF THE DETAILS NOTED HEREIN.
 2. PIEZOMETERS SHALL BE INSTALLED IN THE MIDDLE OF THE DAM BODY AND SHALL BE INSTALLED AT THE LOCATIONS SHOWN ON THIS PLAN AT THE TIME OF CONSTRUCTION.
 3. METERS SHALL BE INSTALLED IN ACCORDANCE WITH THE DETAILS SHOWN ON THIS PLAN AT THE TIME OF CONSTRUCTION.
 4. STATIONS ARE FOR INSTALLATION OF PERMANENT REFERENCE AND NOT FOR PERMANENT REFERENCE.

PLAN SCALE: 1"=200'



SECTION B-B SCALE: 1"=40'

SECTION A-A-HORIZONTAL SCALE: 1"=40'

PIEZOMETER NUMBER	TOP OF PIPE ELEVATION/TIP OF PIPE ELEVATION	ZONE IDENTIFICATION
AP1	4362.2	RESERVOIR
AP2	4362.2	RESERVOIR
AP3	4372.3	RESERVOIR
AP4	4372.3	RESERVOIR
AP5	4382.4	RESERVOIR
AP6	4382.4	RESERVOIR
AP7	4392.5	RESERVOIR
AP8	4392.5	RESERVOIR
AP9	4402.6	RESERVOIR
AP10	4402.6	RESERVOIR
AP11	4412.7	RESERVOIR
AP12	4412.7	RESERVOIR
AP13	4422.8	RESERVOIR
AP14	4422.8	RESERVOIR
AP15	4432.9	RESERVOIR
AP16	4432.9	RESERVOIR
AP17	4443.0	RESERVOIR
AP18	4443.0	RESERVOIR
AP19	4453.1	RESERVOIR
AP20	4453.1	RESERVOIR
AP21	4463.2	RESERVOIR
AP22	4463.2	RESERVOIR
AP23	4473.3	RESERVOIR
AP24	4473.3	RESERVOIR
AP25	4483.4	RESERVOIR
AP26	4483.4	RESERVOIR
AP27	4493.5	RESERVOIR
AP28	4493.5	RESERVOIR
AP29	4503.6	RESERVOIR
AP30	4503.6	RESERVOIR
AP31	4513.7	RESERVOIR
AP32	4513.7	RESERVOIR
AP33	4523.8	RESERVOIR
AP34	4523.8	RESERVOIR
AP35	4533.9	RESERVOIR
AP36	4533.9	RESERVOIR
AP37	4544.0	RESERVOIR
AP38	4544.0	RESERVOIR
AP39	4554.1	RESERVOIR
AP40	4554.1	RESERVOIR
AP41	4564.2	RESERVOIR
AP42	4564.2	RESERVOIR
AP43	4574.3	RESERVOIR
AP44	4574.3	RESERVOIR
AP45	4584.4	RESERVOIR
AP46	4584.4	RESERVOIR
AP47	4594.5	RESERVOIR
AP48	4594.5	RESERVOIR
AP49	4604.6	RESERVOIR
AP50	4604.6	RESERVOIR
AP51	4614.7	RESERVOIR
AP52	4614.7	RESERVOIR
AP53	4624.8	RESERVOIR
AP54	4624.8	RESERVOIR
AP55	4634.9	RESERVOIR
AP56	4634.9	RESERVOIR
AP57	4645.0	RESERVOIR
AP58	4645.0	RESERVOIR
AP59	4655.1	RESERVOIR
AP60	4655.1	RESERVOIR
AP61	4665.2	RESERVOIR
AP62	4665.2	RESERVOIR
AP63	4675.3	RESERVOIR
AP64	4675.3	RESERVOIR
AP65	4685.4	RESERVOIR
AP66	4685.4	RESERVOIR
AP67	4695.5	RESERVOIR
AP68	4695.5	RESERVOIR
AP69	4705.6	RESERVOIR
AP70	4705.6	RESERVOIR
AP71	4715.7	RESERVOIR
AP72	4715.7	RESERVOIR
AP73	4725.8	RESERVOIR
AP74	4725.8	RESERVOIR
AP75	4735.9	RESERVOIR
AP76	4735.9	RESERVOIR
AP77	4746.0	RESERVOIR
AP78	4746.0	RESERVOIR
AP79	4756.1	RESERVOIR
AP80	4756.1	RESERVOIR
AP81	4766.2	RESERVOIR
AP82	4766.2	RESERVOIR
AP83	4776.3	RESERVOIR
AP84	4776.3	RESERVOIR
AP85	4786.4	RESERVOIR
AP86	4786.4	RESERVOIR
AP87	4796.5	RESERVOIR
AP88	4796.5	RESERVOIR
AP89	4806.6	RESERVOIR
AP90	4806.6	RESERVOIR
AP91	4816.7	RESERVOIR
AP92	4816.7	RESERVOIR
AP93	4826.8	RESERVOIR
AP94	4826.8	RESERVOIR
AP95	4836.9	RESERVOIR
AP96	4836.9	RESERVOIR
AP97	4847.0	RESERVOIR
AP98	4847.0	RESERVOIR
AP99	4857.1	RESERVOIR
AP100	4857.1	RESERVOIR

- REFERENCES:**
- EMH001 GENERAL ARRANGEMENT
 - EMH002 GENERAL ARRANGEMENT
 - EMH003 GENERAL ARRANGEMENT
 - EMH004 GENERAL ARRANGEMENT
 - EMH005 GENERAL ARRANGEMENT
 - EMH006 GENERAL ARRANGEMENT
 - EMH007 GENERAL ARRANGEMENT
 - EMH008 GENERAL ARRANGEMENT
 - EMH009 GENERAL ARRANGEMENT
 - EMH010 GENERAL ARRANGEMENT
 - EMH011 GENERAL ARRANGEMENT
 - EMH012 GENERAL ARRANGEMENT
 - EMH013 GENERAL ARRANGEMENT
 - EMH014 GENERAL ARRANGEMENT
 - EMH015 GENERAL ARRANGEMENT
 - EMH016 GENERAL ARRANGEMENT
 - EMH017 GENERAL ARRANGEMENT
 - EMH018 GENERAL ARRANGEMENT
 - EMH019 GENERAL ARRANGEMENT
 - EMH020 GENERAL ARRANGEMENT
 - EMH021 GENERAL ARRANGEMENT
 - EMH022 GENERAL ARRANGEMENT
 - EMH023 GENERAL ARRANGEMENT
 - EMH024 GENERAL ARRANGEMENT
 - EMH025 GENERAL ARRANGEMENT
 - EMH026 GENERAL ARRANGEMENT
 - EMH027 GENERAL ARRANGEMENT
 - EMH028 GENERAL ARRANGEMENT
 - EMH029 GENERAL ARRANGEMENT
 - EMH030 GENERAL ARRANGEMENT
 - EMH031 GENERAL ARRANGEMENT
 - EMH032 GENERAL ARRANGEMENT
 - EMH033 GENERAL ARRANGEMENT
 - EMH034 GENERAL ARRANGEMENT
 - EMH035 GENERAL ARRANGEMENT
 - EMH036 GENERAL ARRANGEMENT
 - EMH037 GENERAL ARRANGEMENT
 - EMH038 GENERAL ARRANGEMENT
 - EMH039 GENERAL ARRANGEMENT
 - EMH040 GENERAL ARRANGEMENT
 - EMH041 GENERAL ARRANGEMENT
 - EMH042 GENERAL ARRANGEMENT
 - EMH043 GENERAL ARRANGEMENT
 - EMH044 GENERAL ARRANGEMENT
 - EMH045 GENERAL ARRANGEMENT
 - EMH046 GENERAL ARRANGEMENT
 - EMH047 GENERAL ARRANGEMENT
 - EMH048 GENERAL ARRANGEMENT
 - EMH049 GENERAL ARRANGEMENT
 - EMH050 GENERAL ARRANGEMENT
 - EMH051 GENERAL ARRANGEMENT
 - EMH052 GENERAL ARRANGEMENT
 - EMH053 GENERAL ARRANGEMENT
 - EMH054 GENERAL ARRANGEMENT
 - EMH055 GENERAL ARRANGEMENT
 - EMH056 GENERAL ARRANGEMENT
 - EMH057 GENERAL ARRANGEMENT
 - EMH058 GENERAL ARRANGEMENT
 - EMH059 GENERAL ARRANGEMENT
 - EMH060 GENERAL ARRANGEMENT
 - EMH061 GENERAL ARRANGEMENT
 - EMH062 GENERAL ARRANGEMENT
 - EMH063 GENERAL ARRANGEMENT
 - EMH064 GENERAL ARRANGEMENT
 - EMH065 GENERAL ARRANGEMENT
 - EMH066 GENERAL ARRANGEMENT
 - EMH067 GENERAL ARRANGEMENT
 - EMH068 GENERAL ARRANGEMENT
 - EMH069 GENERAL ARRANGEMENT
 - EMH070 GENERAL ARRANGEMENT
 - EMH071 GENERAL ARRANGEMENT
 - EMH072 GENERAL ARRANGEMENT
 - EMH073 GENERAL ARRANGEMENT
 - EMH074 GENERAL ARRANGEMENT
 - EMH075 GENERAL ARRANGEMENT
 - EMH076 GENERAL ARRANGEMENT
 - EMH077 GENERAL ARRANGEMENT
 - EMH078 GENERAL ARRANGEMENT
 - EMH079 GENERAL ARRANGEMENT
 - EMH080 GENERAL ARRANGEMENT
 - EMH081 GENERAL ARRANGEMENT
 - EMH082 GENERAL ARRANGEMENT
 - EMH083 GENERAL ARRANGEMENT
 - EMH084 GENERAL ARRANGEMENT
 - EMH085 GENERAL ARRANGEMENT
 - EMH086 GENERAL ARRANGEMENT
 - EMH087 GENERAL ARRANGEMENT
 - EMH088 GENERAL ARRANGEMENT
 - EMH089 GENERAL ARRANGEMENT
 - EMH090 GENERAL ARRANGEMENT
 - EMH091 GENERAL ARRANGEMENT
 - EMH092 GENERAL ARRANGEMENT
 - EMH093 GENERAL ARRANGEMENT
 - EMH094 GENERAL ARRANGEMENT
 - EMH095 GENERAL ARRANGEMENT
 - EMH096 GENERAL ARRANGEMENT
 - EMH097 GENERAL ARRANGEMENT
 - EMH098 GENERAL ARRANGEMENT
 - EMH099 GENERAL ARRANGEMENT
 - EMH100 GENERAL ARRANGEMENT

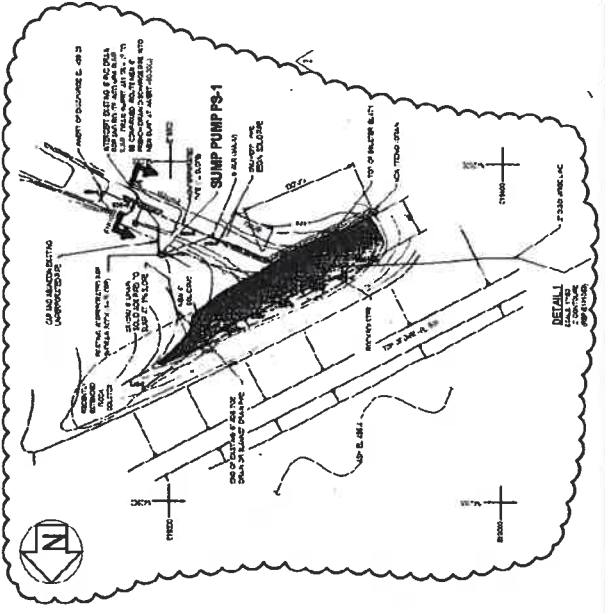
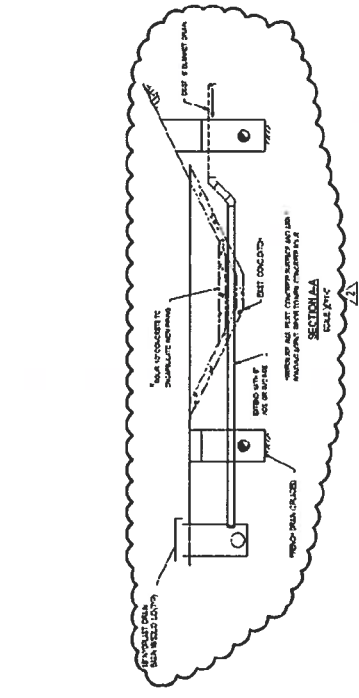
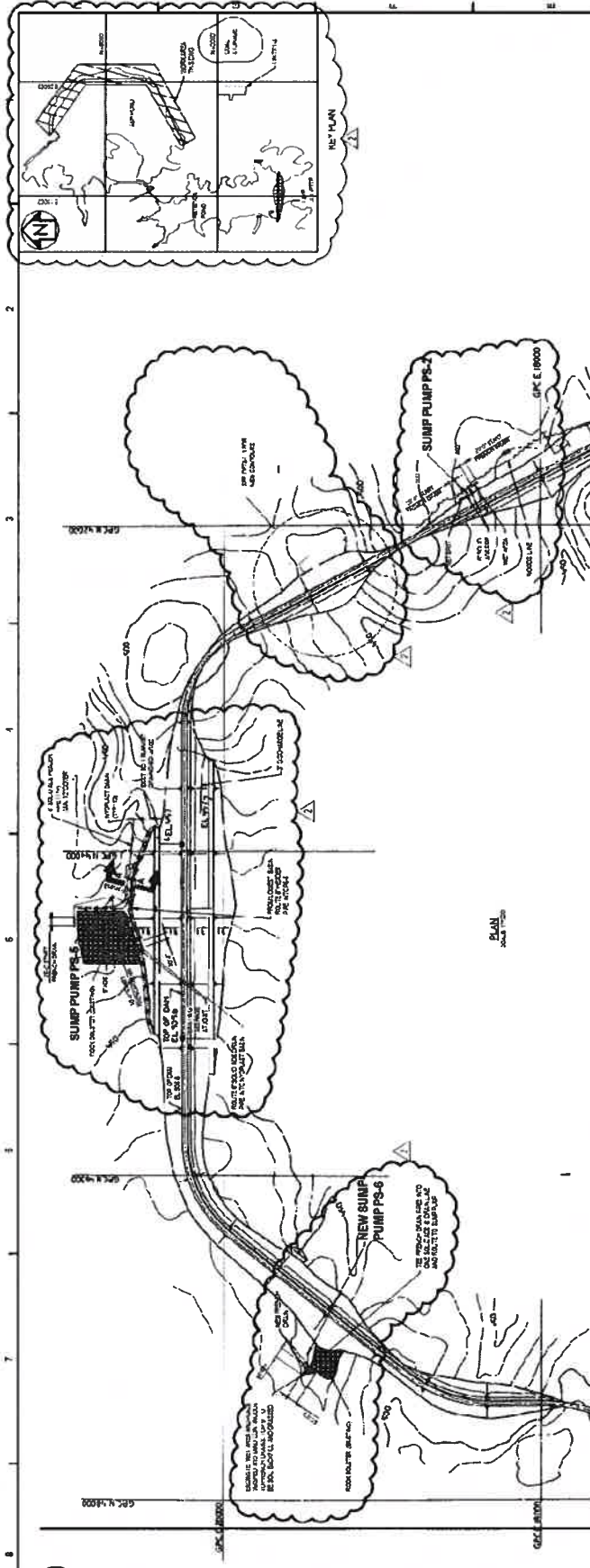
GEORGIA POWER COMPANY
PLANT SCHERER DAM
ASH STORAGE AND INSTRUMENTATION
PIEZOMETERS ADDED
ISSUED FOR CONSTRUCTION

DRAWN BY: []
 CHECKED BY: []
 DESIGNED BY: []
 APPROVED BY: []

PROJECT NO. 10-505 E1H1058
 SHEET NO. 1 OF 1

DATE: 10/15/08
 SCALE: AS SHOWN

SOUTHERN COMPANY SERVICES INC.
 1520 NORTH AVENUE, SUITE 1000
 ATLANTA, GA 30309
 TEL: 404.522.1000
 FAX: 404.522.1001
 WWW: WWW.SCSP.COM



WORK THIS DRAWING ACCORDING TO THE

Bohannan Concrete Corporation
Engineering and Construction Services
1000 N. 10th Street, Suite 100
Tulsa, Oklahoma 74103
Phone: (918) 438-1234
Fax: (918) 438-1235
Website: www.bohannancc.com

NO.	DATE	BY	CHKD.	DESCRIPTION
1	08/01/00	JL	ML	ISSUED FOR PERMIT
2	08/15/00	JL	ML	REVISED PER COMMENTS
3	08/25/00	JL	ML	REVISED PER COMMENTS
4	09/10/00	JL	ML	REVISED PER COMMENTS
5	09/20/00	JL	ML	REVISED PER COMMENTS
6	10/01/00	JL	ML	REVISED PER COMMENTS
7	10/15/00	JL	ML	REVISED PER COMMENTS
8	10/25/00	JL	ML	REVISED PER COMMENTS
9	11/05/00	JL	ML	REVISED PER COMMENTS
10	11/15/00	JL	ML	REVISED PER COMMENTS
11	11/25/00	JL	ML	REVISED PER COMMENTS
12	12/05/00	JL	ML	REVISED PER COMMENTS
13	12/15/00	JL	ML	REVISED PER COMMENTS
14	12/25/00	JL	ML	REVISED PER COMMENTS
15	01/05/01	JL	ML	REVISED PER COMMENTS
16	01/15/01	JL	ML	REVISED PER COMMENTS
17	01/25/01	JL	ML	REVISED PER COMMENTS
18	02/05/01	JL	ML	REVISED PER COMMENTS
19	02/15/01	JL	ML	REVISED PER COMMENTS
20	02/25/01	JL	ML	REVISED PER COMMENTS
21	03/05/01	JL	ML	REVISED PER COMMENTS
22	03/15/01	JL	ML	REVISED PER COMMENTS
23	03/25/01	JL	ML	REVISED PER COMMENTS
24	04/05/01	JL	ML	REVISED PER COMMENTS
25	04/15/01	JL	ML	REVISED PER COMMENTS
26	04/25/01	JL	ML	REVISED PER COMMENTS
27	05/05/01	JL	ML	REVISED PER COMMENTS
28	05/15/01	JL	ML	REVISED PER COMMENTS
29	05/25/01	JL	ML	REVISED PER COMMENTS
30	06/05/01	JL	ML	REVISED PER COMMENTS
31	06/15/01	JL	ML	REVISED PER COMMENTS
32	06/25/01	JL	ML	REVISED PER COMMENTS
33	07/05/01	JL	ML	REVISED PER COMMENTS
34	07/15/01	JL	ML	REVISED PER COMMENTS
35	07/25/01	JL	ML	REVISED PER COMMENTS
36	08/05/01	JL	ML	REVISED PER COMMENTS
37	08/15/01	JL	ML	REVISED PER COMMENTS
38	08/25/01	JL	ML	REVISED PER COMMENTS
39	09/05/01	JL	ML	REVISED PER COMMENTS
40	09/15/01	JL	ML	REVISED PER COMMENTS
41	09/25/01	JL	ML	REVISED PER COMMENTS
42	10/05/01	JL	ML	REVISED PER COMMENTS
43	10/15/01	JL	ML	REVISED PER COMMENTS
44	10/25/01	JL	ML	REVISED PER COMMENTS
45	11/05/01	JL	ML	REVISED PER COMMENTS
46	11/15/01	JL	ML	REVISED PER COMMENTS
47	11/25/01	JL	ML	REVISED PER COMMENTS
48	12/05/01	JL	ML	REVISED PER COMMENTS
49	12/15/01	JL	ML	REVISED PER COMMENTS
50	12/25/01	JL	ML	REVISED PER COMMENTS