

# CLOSURE PLAN FOR GEORGIA POWER FORMER PLANT ARKWRIGHT - AP2-DAS LANDFILL

**MACON - BIBB COUNTY, GA  
NOVEMBER 2018**

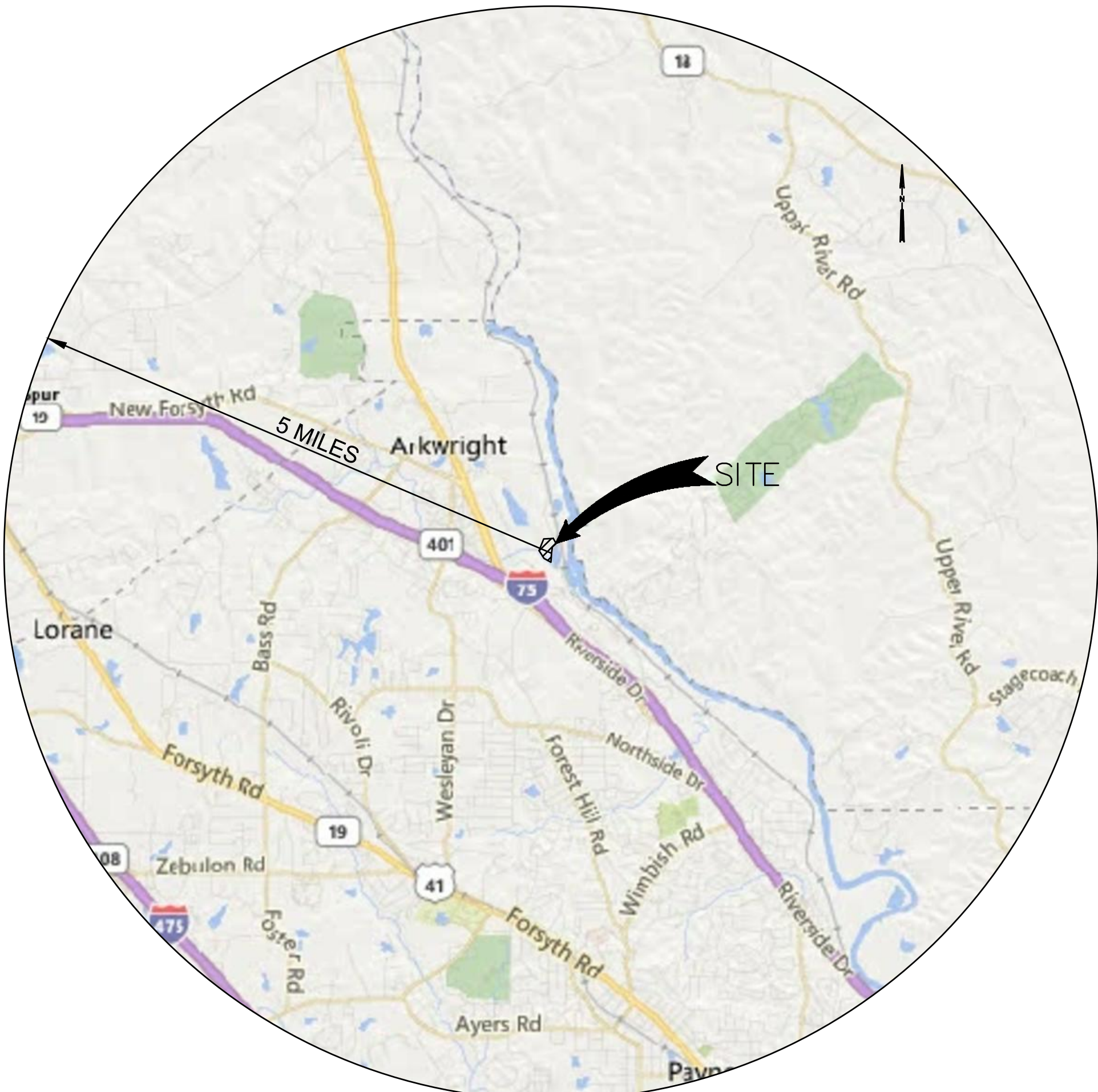
**OWNER**

GEORGIA POWER COMPANY  
241 RALPH MCGILL BOULEVARD NE  
ATLANTA, GA 30308  
CONTACT: GM ENVIRONMENTAL AFFAIRS  
(404) 506-6505

**ENGINEER**

JACOBS  
TEN 10th STREET NW  
SUITE 1400  
ATLANTA, GA 30309  
(404) 978-7600

Drawing Index		
Drawing #	Sheet Number	Sheet Title
C-001	1	COVER SHEET
C-002	2	LEGEND SHEET
CX101	3	EXISTING CONDITIONS
CG101	4	ANTICIPATED EXTENT OF CCR
CG102	5	CCR EXCAVATION PLAN
CG103	6	PHASE I CCR EXCAVATION
CG104	7	PHASE II CCR EXCAVATION
CG105	8	FINAL GRADING PLAN
CS101	9	SITE MONITORING PLAN
SC401	10	CROSS SECTIONS
C-501	11	DETAILS



PROJECT SITE LOCATION  
SCALE: 1" = 1 MILE

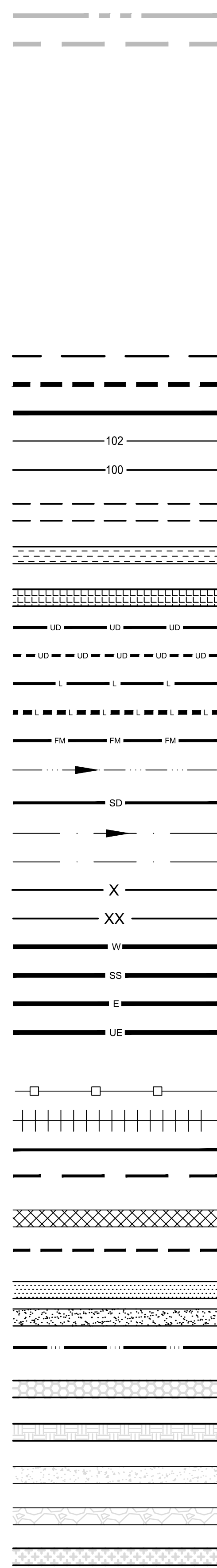
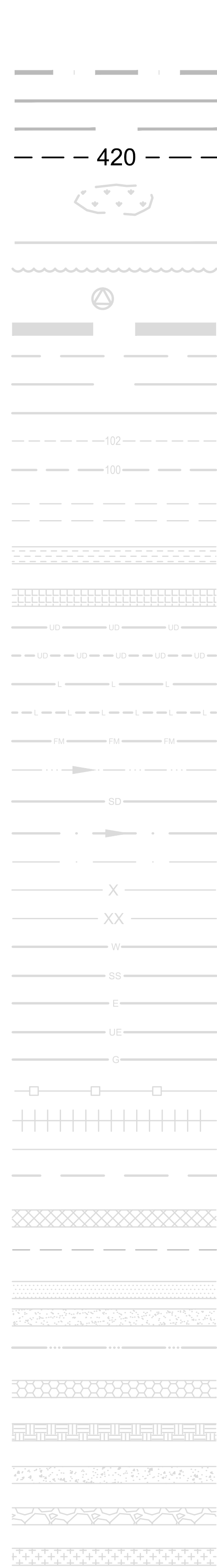
REVISION HISTORY		
DATE	SHEETS	REQUESTED BY



# LEGEND

## EXISTING

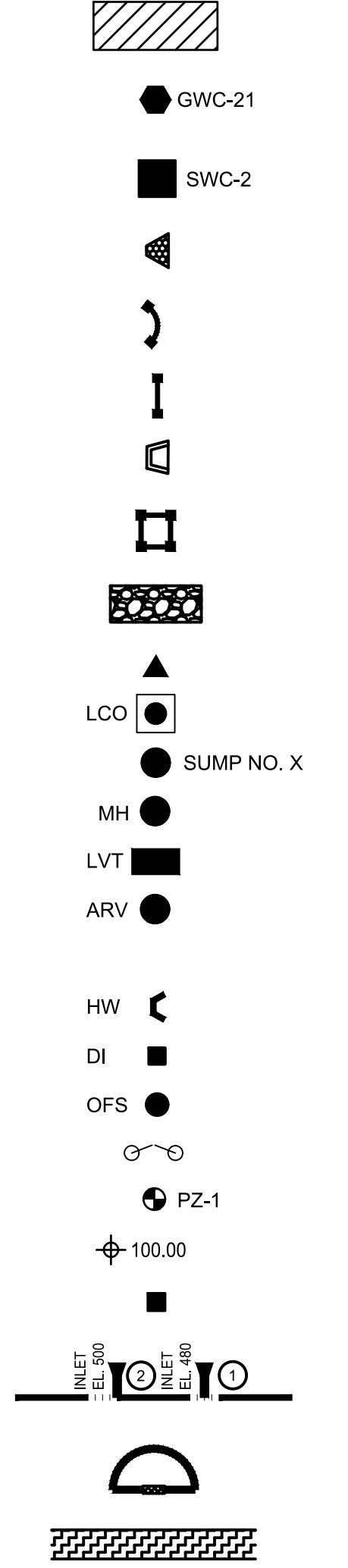
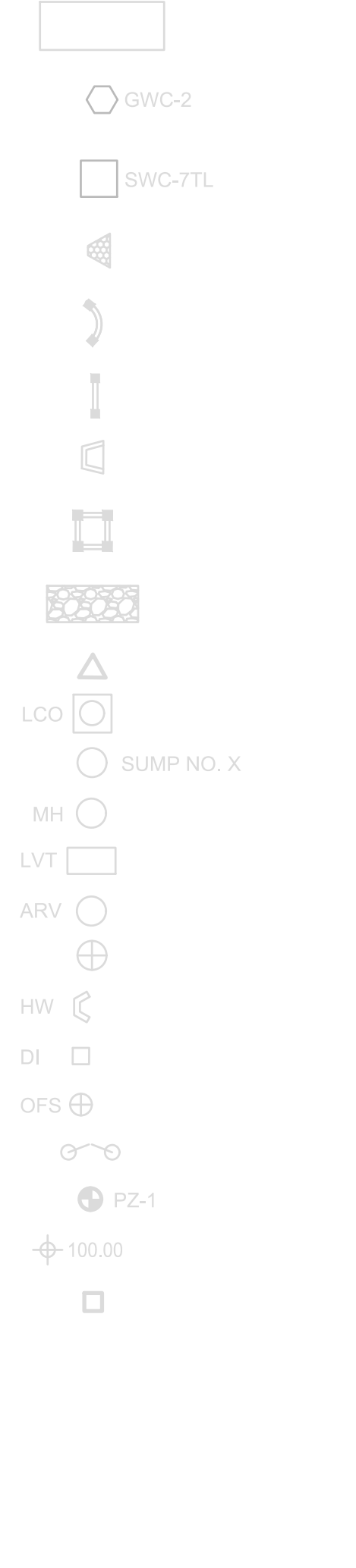
## PROPOSED



- PERMIT BOUNDARY
- CCR MANAGEMENT BOUNDARY
- EXTENT OF CCR
- STREAM AND WETLAND BUFFER
- FLOODPLAIN
- GROUNDWATER CONTOUR
- JURISDICTIONAL WETLAND
- JURISDICTIONAL STREAM
- TREELINE
- BENCHMARK
- DRAINAGE BASIN BOUNDARY LINE
- EASEMENT
- EDGE OF CELL
- EDGE OF LINER
- 2' CONTOUR
- 10' CONTOUR
- UNPAVED ROAD
- PAVED ROAD
- GRAVEL ROAD
- SOLID UNDERDRAIN PIPE
- PERFORATED UNDERDRAIN PIPE
- SOLID LEACHATE PIPE
- PERFORATED LEACHATE PIPE
- LEACHATE FORCE MAIN
- DITCH CENTERLINE
- STORM DRAINAGE PIPE
- STORM WATER DIVERSION BERM
- STORM WATER RAIN FLAP
- SINGLE ROW SILT FENCE
- DOUBLE ROW SILT FENCE
- WATER MAIN
- SANITARY SEWER
- OVERHEAD POWER LINE
- UNDERGROUND POWER LINE
- GAS LINE
- FENCE
- RAILROAD
- HDPE GEOMEMBRANE
- GEOSYNTHETIC CLAY LINER
- GEOCOMPOSITE DRAINAGE LAYER
- GEOTEXTILE FILTER
- PROTECTIVE SOIL COVER
- LEACHATE COLLECTION SAND
- DOWNDRAIN PIPE
- RIP RAP
- COMPACTED SOIL
- CONCRETE
- GRAVEL / STONE
- SOIL FILL

## EXISTING

## PROPOSED

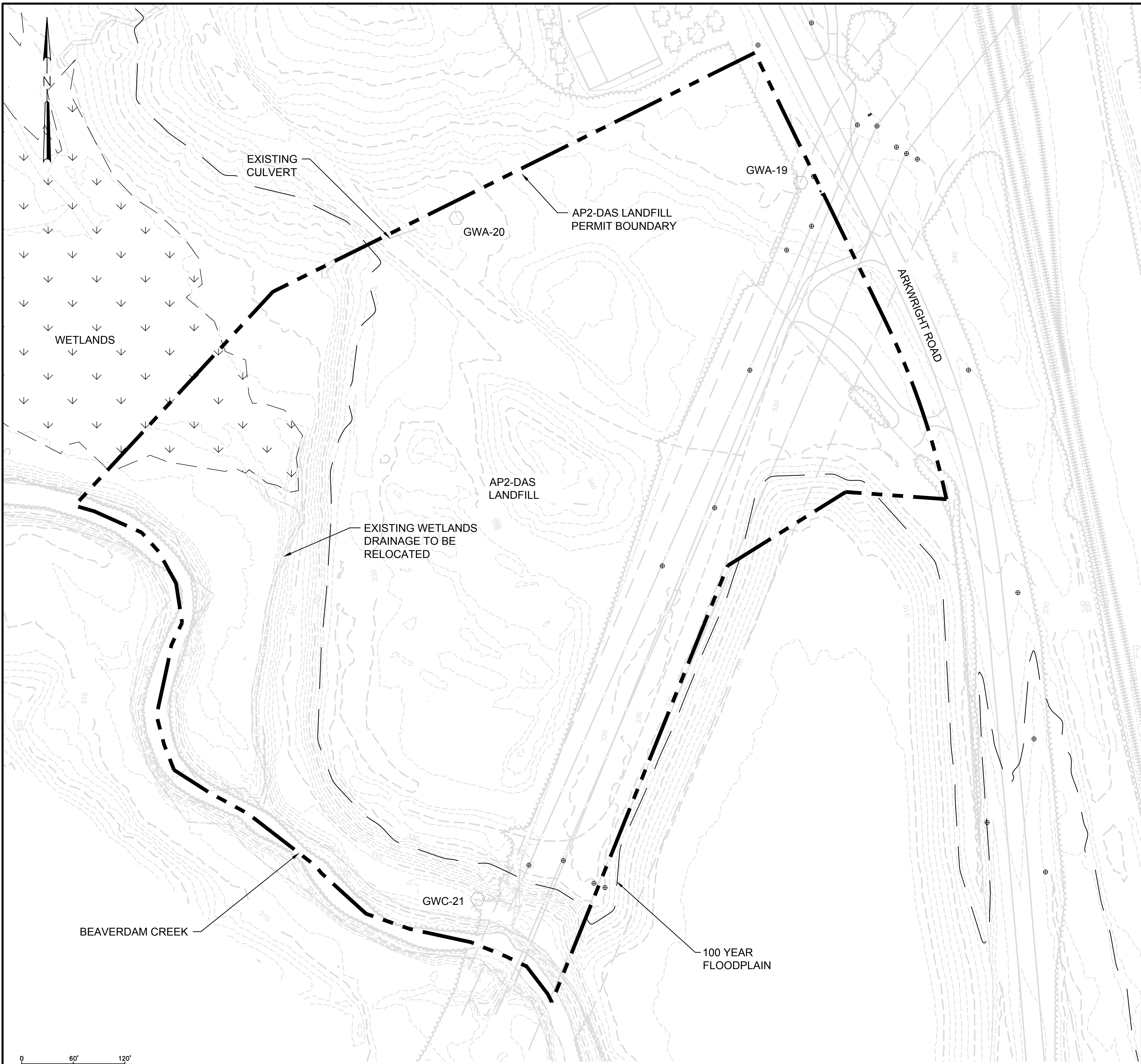


- BUILDING
- GROUNDWATER MONITORING WELL
- SURFACE WATER MONITORING POINT
- OUTLET PROTECTION
- STONE CHECK DAM
- HAY BALE CHECK DAM
- FLARED END SECTION
- INLET PROTECTION
- CONSTRUCTION EXIT
- NPDES SAMPLING POINT
- LEACHATE CLEANOUT
- LEACHATE SUMP
- LEACHATE MANHOLE / PUMP STATION
- LEACHATE VAULT
- AIR RELEASE VALVE
- POWER POLE
- HEADWALL
- DROP INLET
- OVERFLOW STRUCTURE
- GATE
- PIEZOMETER
- SPOT ELEVATION
- MARKER POST
- DOWNDRAIN PIPE AND SLOPED PAVED HEADWALL
- SEDIMENT TRAP
- ROLLED EROSION CONTROL PRODUCT

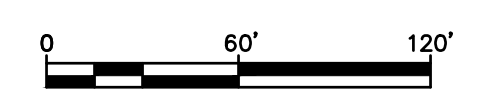


REV.	DATE	DESCRIPTION

<b>LEGEND SHEET</b>			
<b>AP2-DAS LANDFILL</b>			
FOR GEORGIA POWER FORMER PLANT ARKWRIGHT MACON - BIBB COUNTY, GA			
<b>JACOBS</b>			
404.978.7600 JACOBS.COM		Ten 10th Street NW, Suite 1400, Atlanta, GA 30309	
PROJ. NO.	35DK9203	DWG.	C-002
SCALE	NTS	EDIT	
DATE	NOVEMBER 2018	SHEET 2 OF 11	



- NOTES:**
1. FOR LEGEND SEE DRAWING C-002.
  2. TOPOGRAPHIC DATA PROVIDED BY DONALDSON, GARRETT & ASSOCIATES, INC, DATED 06-26-2018.
  3. WETLAND DELINEATION PERFORMED BY JACOBS, DATED 10-17-2018.
  4. 100 YEAR FLOODPLAIN DATA TAKEN FROM THE FEMA INSURANCE RATE MAP (FIRM) PANEL 13021C0040G.



EXISTING CONDITIONS  
**AP2-DAS LANDFILL**  
 FOR  
 GEORGIA POWER  
 FORMER PLANT ARKWRIGHT  
 MACON - BIBB COUNTY, GA

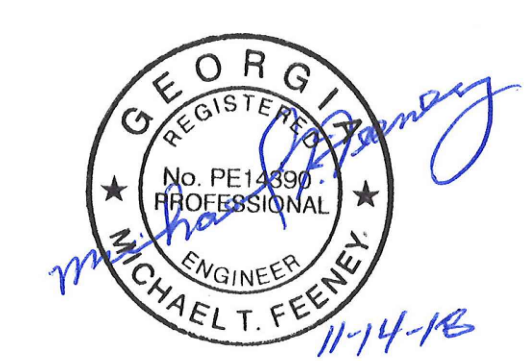


REV.	DATE	DESCRIPTION

404.978.7600 JACOBS.COM		Ten 10th Street NW, Suite 1400, Atlanta, GA 30309	
PROJ. NO.	35DK9203	DWG.	CX101
SCALE	AS SHOWN		
DATE	NOVEMBER 2018	SHEET	3 OF 11

**NOTES:**

1. FOR LEGEND SEE DRAWING C-002.
2. CONTOURS SHOWN REPRESENT ANTICIPATED BASE AND EXTENT OF CCR. EXTENT OF CCR CONTOURS GENERATED USING 3D MODELING AND BASED ON EXISTING BORING DATA PROVIDED BY GEORGIA POWER AND LIMITED DATA OBTAINED BY JACOBS. ACTUAL EXTENT OF CCR WASTE TO BE CONFIRMED DURING REMOVAL.

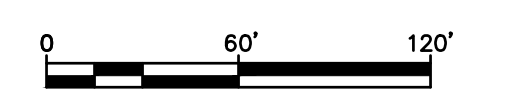


ANTICIPATED EXTENT OF CCR  
 AP2-DAS LANDFILL  
 FOR  
 GEORGIA POWER  
 FORMER PLANT ARKWRIGHT  
 MACON - BIBB COUNTY, GA



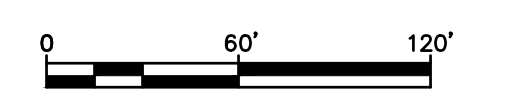
REV.	DATE	DESCRIPTION

404.978.7600 JACOBS.COM	Ten 10th Street NW, Suite 1400, Atlanta, GA 30309		
PROJ. NO.	35DK9203	DWG.	CG101
SCALE	AS SHOWN	EDIT	
DATE	NOVEMBER 2018	SHEET 4 OF 11	





- NOTES:**
- EXISTING ELECTRICAL POWER POLES INDICATED TO REMAIN AFTER CLOSURE BY REMOVAL. A 25' MINIMUM BUFFER OF PRE-EXISTING BENEFICIAL REUSE MATERIAL SHALL BE LEFT IN PLACE AROUND EACH POLE WITHIN PERMIT BOUNDARY.
  - PROPOSED CONTOURS SHOWN REPRESENT THE ANTICIPATED EXTENT OF CCR TO BE EXCAVATED. AN ADDITIONAL 6 INCHES OF MATERIAL SHALL BE EXCAVATED BEYOND THE EXTENT OF CCR, EXCEPT FOR THE BENEFICIAL REUSE AREAS.
  - FOR LEGEND SEE DRAWING C-002.
  - ACTUAL EXCAVATION SEQUENCE WILL BE BASED ON FIELD CONDITIONS AND ADJUSTED AS NEEDED TO APPROPRIATELY HANDLE STORMWATER AND CONTACT WATER.

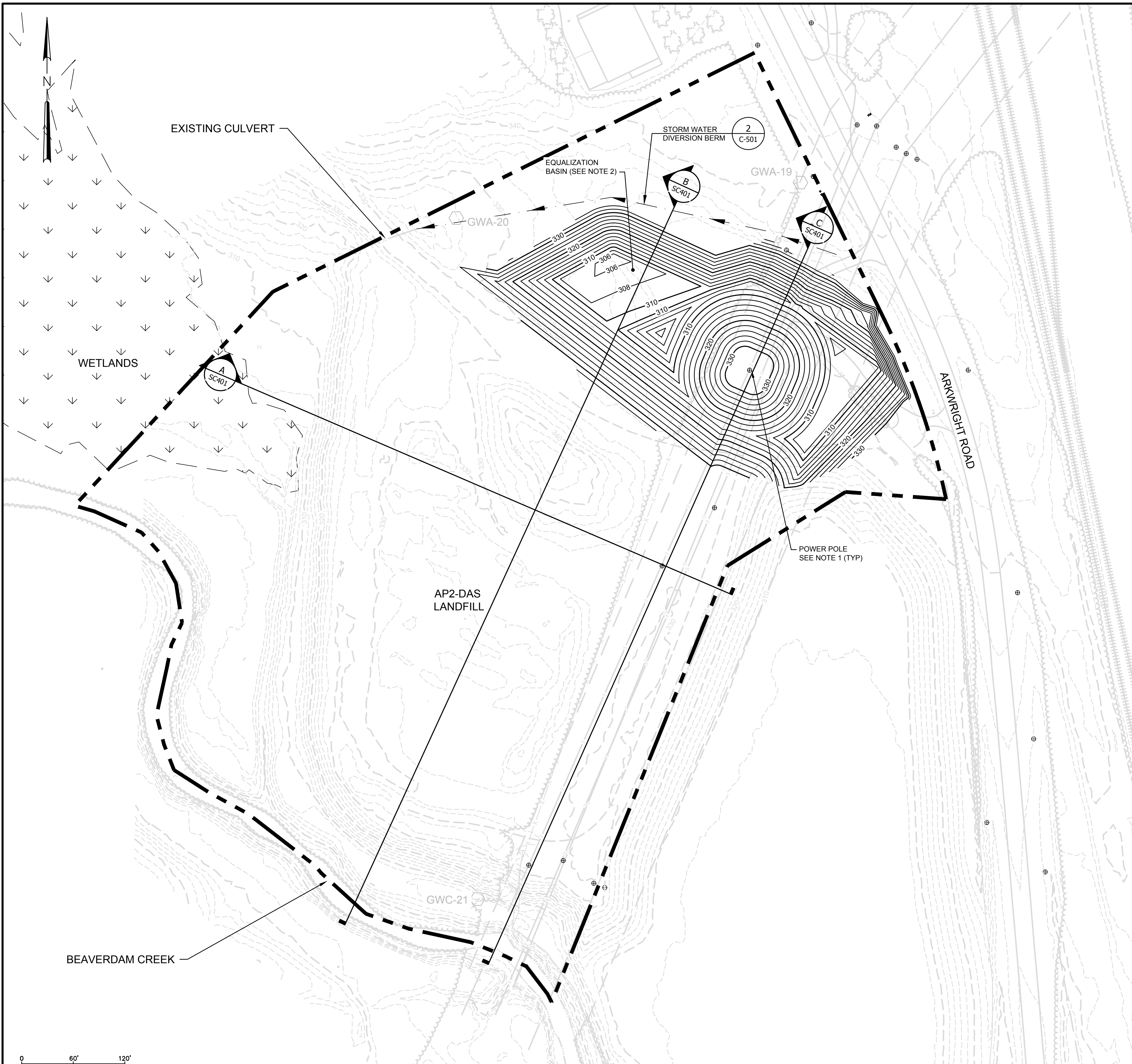


CCR EXCAVATION PLAN  
 AP2-DAS LANDFILL  
 FOR  
 GEORGIA POWER  
 FORMER PLANT ARKWRIGHT  
 MACON - BIBB COUNTY, GA



REV.	DATE	DESCRIPTION

404.978.7600 JACOBS.COM	Ten 10th Street NW, Suite 1400, Atlanta, GA 30309		
PROJ. NO.	35DK9203	DWG.	CG102
SCALE	AS SHOWN	EDIT	
DATE	NOVEMBER 2018	SHEET 5 OF 11	



- NOTES:**
- EXISTING ELECTRICAL POWER POLES INDICATED ARE TO REMAIN AFTER CLOSURE BY REMOVAL. A 25' MINIMUM BUFFER OF PRE-EXISTING BENEFICIAL REUSE MATERIAL SHALL BE LEFT IN PLACE AROUND EACH POLE WITHIN PERMIT BOUNDARY.
  - PHASE I EXCAVATION AREA SHALL BE USED AS EQUALIZATION BASIN TO PROVIDE TEMPORARY INTERNAL RETENTION OF STORMWATER RUNOFF DURING REMOVAL.
  - PROPOSED CONTOURS SHOWN REPRESENT THE ANTICIPATED EXTENT OF CCR TO BE EXCAVATED DURING PHASE I.
  - FOR LEGEND SEE DRAWING C-002.
  - ACTUAL EXCAVATION SEQUENCE WILL BE BASED ON FIELD CONDITIONS AND ADJUSTED AS NEEDED TO APPROPRIATELY HANDLE STORMWATER AND CONTACT WATER.

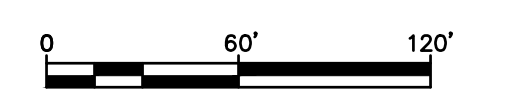


PHASE I CCR EXCAVATION  
 AP2-DAS LANDFILL  
 FOR  
 GEORGIA POWER  
 FORMER PLANT ARKWRIGHT  
 MACON - BIBB COUNTY, GA



REV.	DATE	DESCRIPTION

404.978.7600 JACOBS.COM		Ten 10th Street NW, Suite 1400, Atlanta, GA 30309	
PROJ. NO.	35DK9203	DWG.	CG103
SCALE	AS SHOWN		
DATE	NOVEMBER 2018	SHEET	6 OF 11





- NOTES:**
- EXISTING ELECTRICAL POWER POLE INDICATED ARE TO REMAIN. A 25' MINIMUM BUFFER OF BENEFICIAL REUSE MATERIAL SHALL BE LEFT IN PLACE AROUND EACH POLE.
  - PHASE I EXCAVATION AREA SHALL BE USED AS EQUALIZATION BASIN TO PROVIDE TEMPORARY INTERNAL RETENTION OF STORMWATER RUNOFF DURING REMOVAL.
  - PROPOSED CONTOURS SHOWN REPRESENT THE ANTICIPATED EXTENT OF CCR TO BE EXCAVATED DURING PHASE II.
  - FOR LEGEND SEE DRAWING C-002.
  - ACTUAL EXCAVATION SEQUENCE WILL BE BASED ON FIELD CONDITIONS AND ADJUSTED AS NEEDED TO APPROPRIATELY HANDLE STORMWATER AND CONTACT WATER.

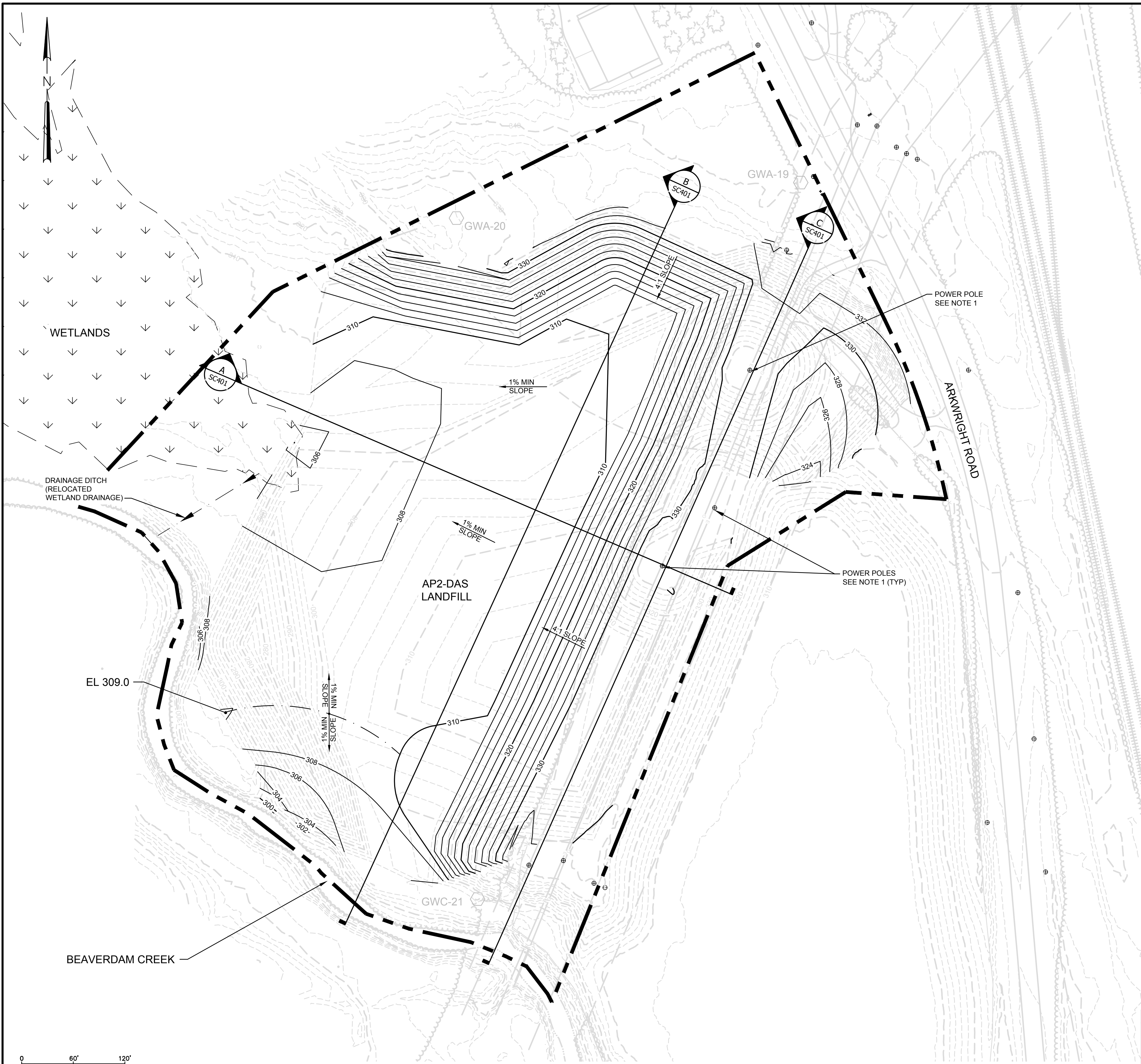


PHASE II CCR EXCAVATION  
 AP2-DAS LANDFILL  
 FOR  
 GEORGIA POWER  
 FORMER PLANT ARKWRIGHT  
 MACON - BIBB COUNTY, GA

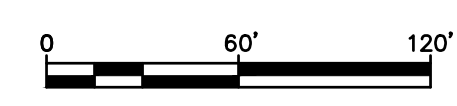


REV.	DATE	DESCRIPTION

404.978.7600 JACOBS.COM	Ten 10th Street NW, Suite 1400, Atlanta, GA 30309		
PROJ. NO.	35DK9203	DWG.	CG104
SCALE	AS SHOWN	EDIT	
DATE	NOVEMBER 2018	SHEET 7 OF 11	



- NOTES:**
- EXISTING ELECTRICAL POWER POLES INDICATED ARE TO REMAIN AFTER REMOVAL. A 25' MINIMUM BUFFER OF BENEFICIAL REUSE MATERIAL SHALL BE LEFT IN PLACE AROUND EACH POLE.
  - PRE-EXISTING BENEFICIAL REUSE AREAS SHALL BE RE-COVERED BY A MINIMUM OF TWO FEET OF SOIL.
  - PROPOSED CONTOURS REPRESENT FINISHED SOIL SURFACE AFTER RECLAMATION. AREA TO BE VEGETATED IMMEDIATELY UPON REACHING FINISHED GRADE.
  - FOR LEGEND SEE DRAWING C-002.



FINAL GRADING PLAN  
 AP2-DAS LANDFILL  
 FOR  
 GEORGIA POWER  
 FORMER PLANT ARKWRIGHT  
 MACON - BIBB COUNTY, GA



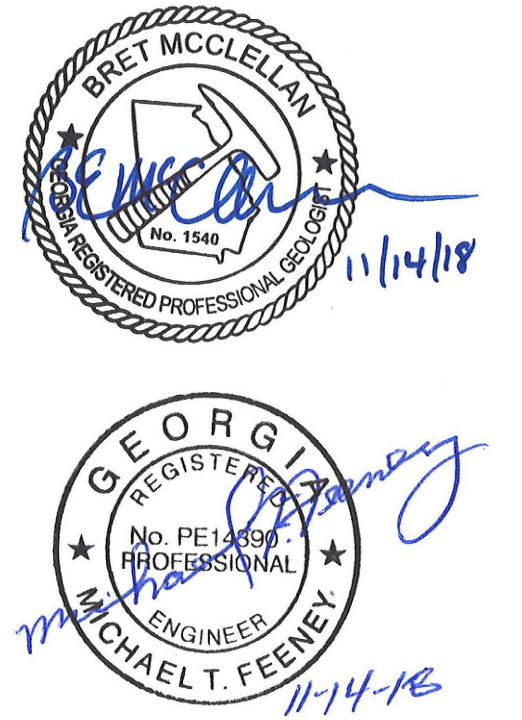
REV.	DATE	DESCRIPTION

404.978.7600 JACOBS.COM		Ten 10th Street NW, Suite 1400, Atlanta, GA 30309	
PROJ. NO.	35DK9203	DWG.	CG105
SCALE	AS SHOWN	EDIT	
DATE	NOVEMBER 2018	SHEET 8 OF 11	





- NOTES:**
- EXISTING CONTOURS SHOWN REPRESENT ANTICIPATED CONDITIONS AFTER FINAL GRADING HAS BEEN COMPLETED.
  - FOR LEGEND SEE DRAWING C-002.
  - POTENTIOMETRIC CONTOURS BASED ON SITE-WIDE WATER LEVEL MEASUREMENTS TAKEN ON 09-11-2018 AND MAY CHANGE AFTER REMOVAL.

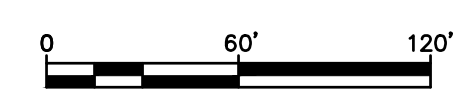


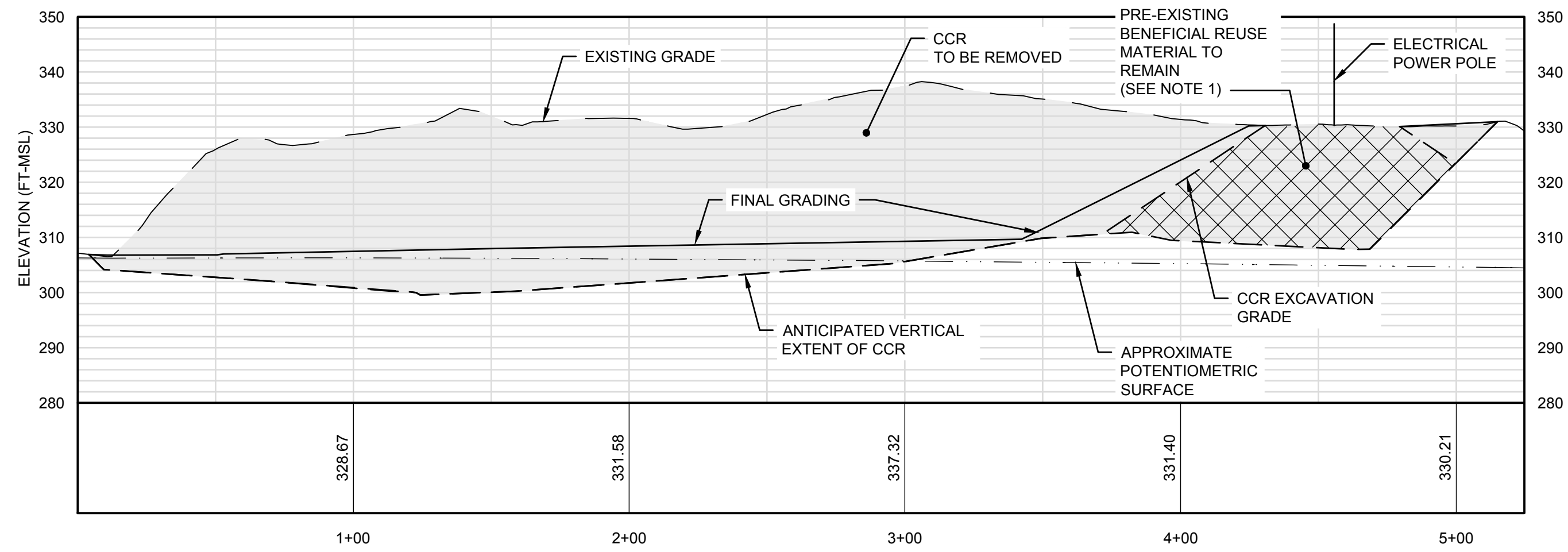
**SITE MONITORING PLAN**  
**AP2-DAS LANDFILL**  
 FOR  
 GEORGIA POWER  
 FORMER PLANT ARKWRIGHT  
 MACON - BIBB COUNTY, GA



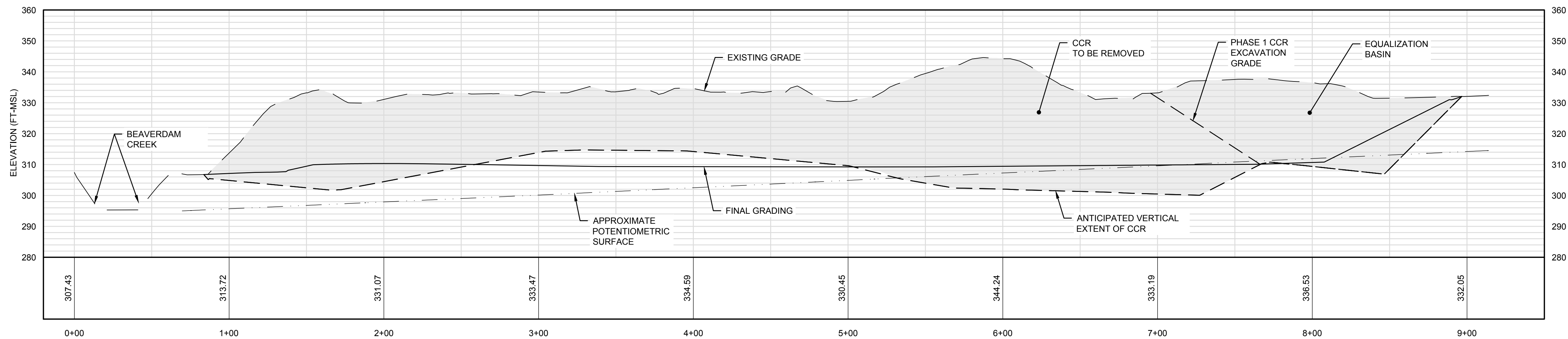
REV.	DATE	DESCRIPTION

404.978.7600 JACOBS.COM		Ten 10th Street NW, Suite 1400, Atlanta, GA 30309	
PROJ. NO.	35DK9203	DWG.	CS101
SCALE	AS SHOWN	EDIT	
DATE	NOVEMBER 2018	SHEET 9 OF 11	

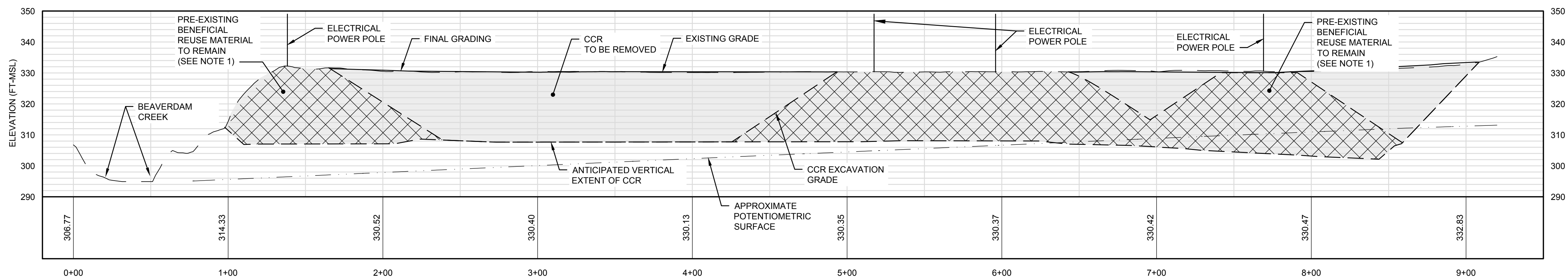




**A SECTION**  
SC401 SCALE: 1"=40' HORIZ  
1"=20' VERT



**B SECTION**  
SC401 SCALE: 1"=40' HORIZ  
1"=20' VERT



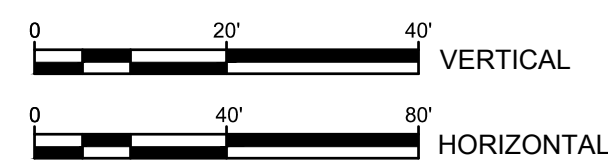
**C SECTION**  
SC401 SCALE: 1"=40' HORIZ  
1"=20' VERT

**NOTES:**

1. PRE-EXISTING BENEFICIAL REUSE AREAS SHALL BE COVERED BY A MINIMUM OF TWO FEET OF SOIL.
2. POTENTIOMETRIC CONTOURS BASED ON WATER LEVEL MEASUREMENTS TAKEN ON 09-11-2018.

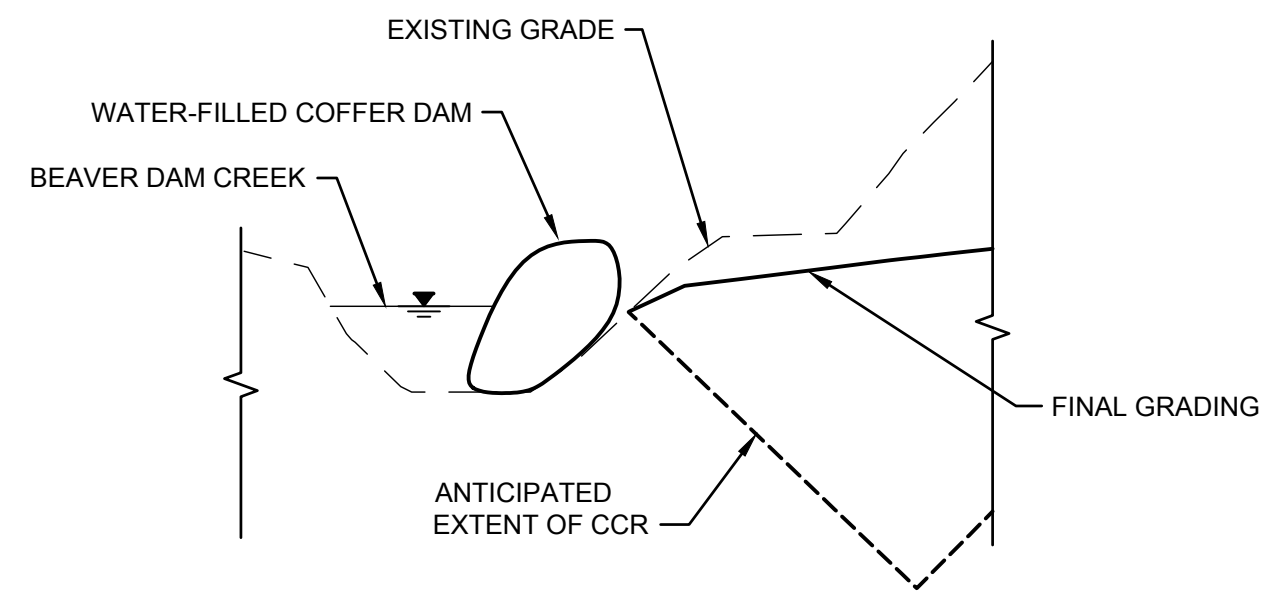
**LEGEND**

- CCR TO BE REMOVED
- PRE-EXISTING BENEFICIAL REUSE MATERIAL TO REMAIN

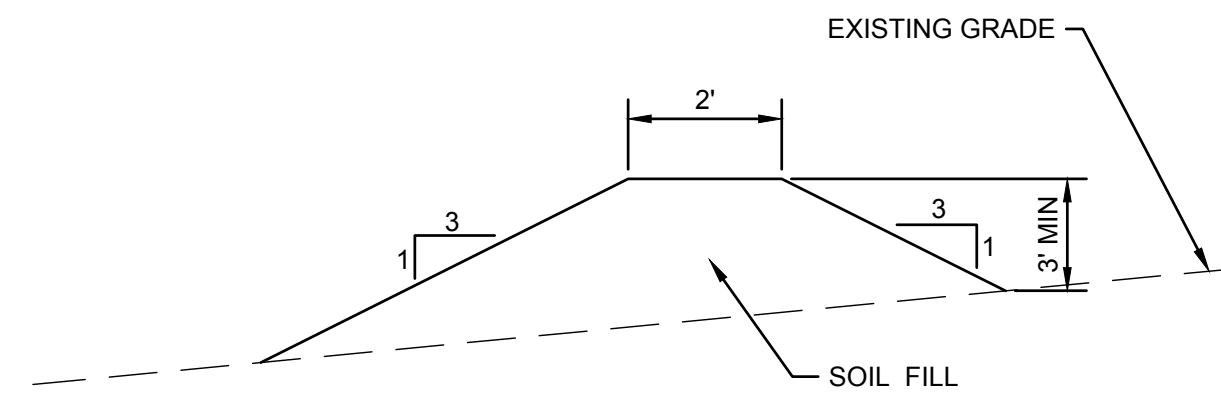


CROSS SECTIONS			
<b>AP2-DAS LANDFILL</b>			
FOR GEORGIA POWER FORMER PLANT ARKWRIGHT MACON - BIBB COUNTY, GA			
<b>JACOBS</b>			
404.978.7600 JACOBS.COM		Ten 10th Street NW, Suite 1400, Atlanta, GA 30309	
PROJ. NO.	35DK9203	DWG.	SC401 EDIT
SCALE	AS SHOWN		
DATE	NOVEMBER 2018	SHEET 10 OF 11	

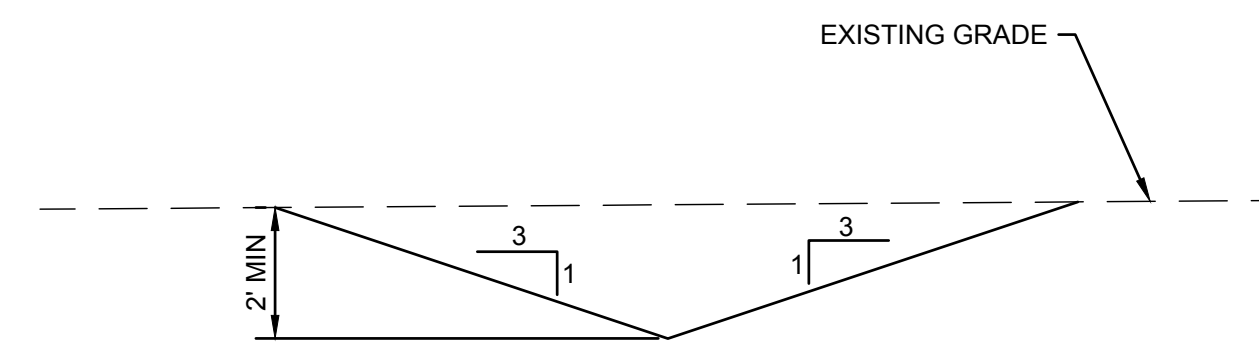
REV.	DATE	DESCRIPTION



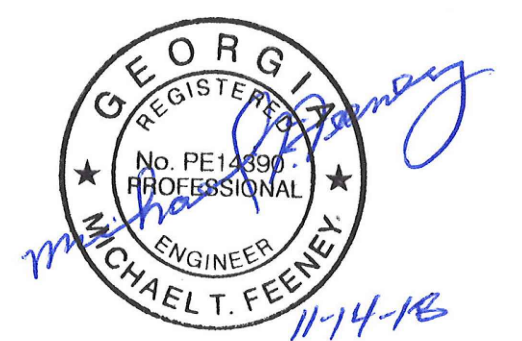
**1** TYPICAL WATER-FILLED COFFER DAM  
C-501 NOT TO SCALE



**2** TYPICAL STORM WATER DIVERSION BERM  
C-501 NOT TO SCALE



**3** TYPICAL DRAINAGE DITCH  
C-501 NOT TO SCALE (RELOCATED WETLAND DRAINAGE)



REV.	DATE	DESCRIPTION

DETAILS			
AP2-DAS LANDFILL FOR GEORGIA POWER FORMER PLANT ARKWRIGHT MACON - BIBB COUNTY, GA			
<b>JACOBS</b>			
404.978.7600 JACOBS.COM		Ten 10th Street NW, Suite 1400, Atlanta, GA 30309	
PROJ. NO.	35DK9203	DWG.	C-501
SCALE	AS SHOWN	EDIT	
DATE	NOVEMBER 2018	SHEET 11 OF 11	