

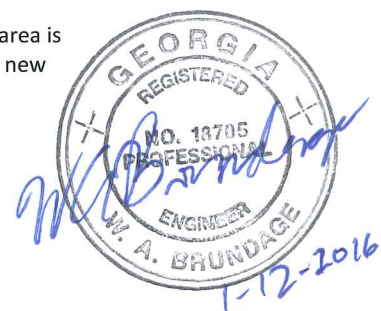
257.83 (b) (2)	REPORT OF ANNUAL INSPECTION OF CCR SURFACE IMPOUNDMENT		
	FACILITY NAME: Plant Hammond, Ash Pond 2 (AP-2)		
	OWNER/OPERATOR OF FACILITY: Georgia Power Company		
	INSPECTION DATE: October 27, 2015		
	INSPECTING ENGINEER: William A. Brundage, PE (Ga. PE License #18705)		
	Based on the results of my inspection and review of the data provided, it is my professional opinion that the report has been completed in accordance with 40 CFR 257.83(b).		
(i)	ANY CHANGES IN GEOMETRY OF THE IMPOUNDING STRUCTURE SINCE THE PREVIOUS ANNUAL INSPECTION?	N/A*	
	(IF YES, DESCRIBE):		
(ii)	LOCATION AND TYPE OF EXISTING INSTRUMENTATION	SEE ATTACHED "INSTRUMENTATION PLAN"	
(ii)	MAXIMUM RECORDED READING OF EACH INSTRUMENT SINCE PREVIOUS ANNUAL INSPECTION	N/A *	
(iii)	APPROXIMATE MINIMUM, MAXIMUM AND PRESENT DEPTH AND ELEVATION OF THE IMPOUNDED WATER SINCE PREVIOUS ANNUAL INSPECTION		
	MIN. DEPTH: N/A	MAX. DEPTH: N/A	PRESENT DEPTH: 29' (max)
	MIN. ELEVATION: N/A	MAX. ELEVATION: N/A	PRESENT. ELEVATION: 596.0
(iii)	APPROXIMATE MINIMUM, MAXIMUM AND PRESENT DEPTH AND ELEVATION OF CCR SINCE PREVIOUS ANNUAL INSPECTION.		
	MIN. DEPTH: N/A	MAX. DEPTH: N/A	PRESENT DEPTH: 29' (max)
	MIN. ELEVATION: N/A	MAX. ELEVATION: N/A	PRESENT ELEVATION: 596.0
(iv)	APPROXIMATE STORAGE CAPACITY OF IMPOUNDING STRUCTURE AT TIME OF INSPECTION.	720,000 cy +	
(v)	APPROXIMATE VOLUME OF IMPOUNDED WATER AND CCR AT TIME OF INSPECTION	WATER: 360,000 cy **+	CCR: 360,000 cy **+
(vi)	ANY APPEARANCE OF AN ACTUAL OR POTENTIAL STRUCTURAL WEAKNESS OF THE CCR UNIT, IN ADDITION TO ANY EXISTING CONDITIONS THAT ARE DISRUPTING OR HAVE THE POTENTIAL TO DISRUPT THE OPERATION AND SAFETY OF THE CCR UNIT AND APPURTENANT STRUCTURES?	NO	
	(IF YES, DESCRIBE):		
(vii)	ANY OTHER CHANGE(S) WHICH MAY HAVE AFFECTED THE STABILITY OR OPERATION SINCE THE PREVIOUS ANNUAL INSPECTION?	N/A*	
	(IF YES, DESCRIBE):		

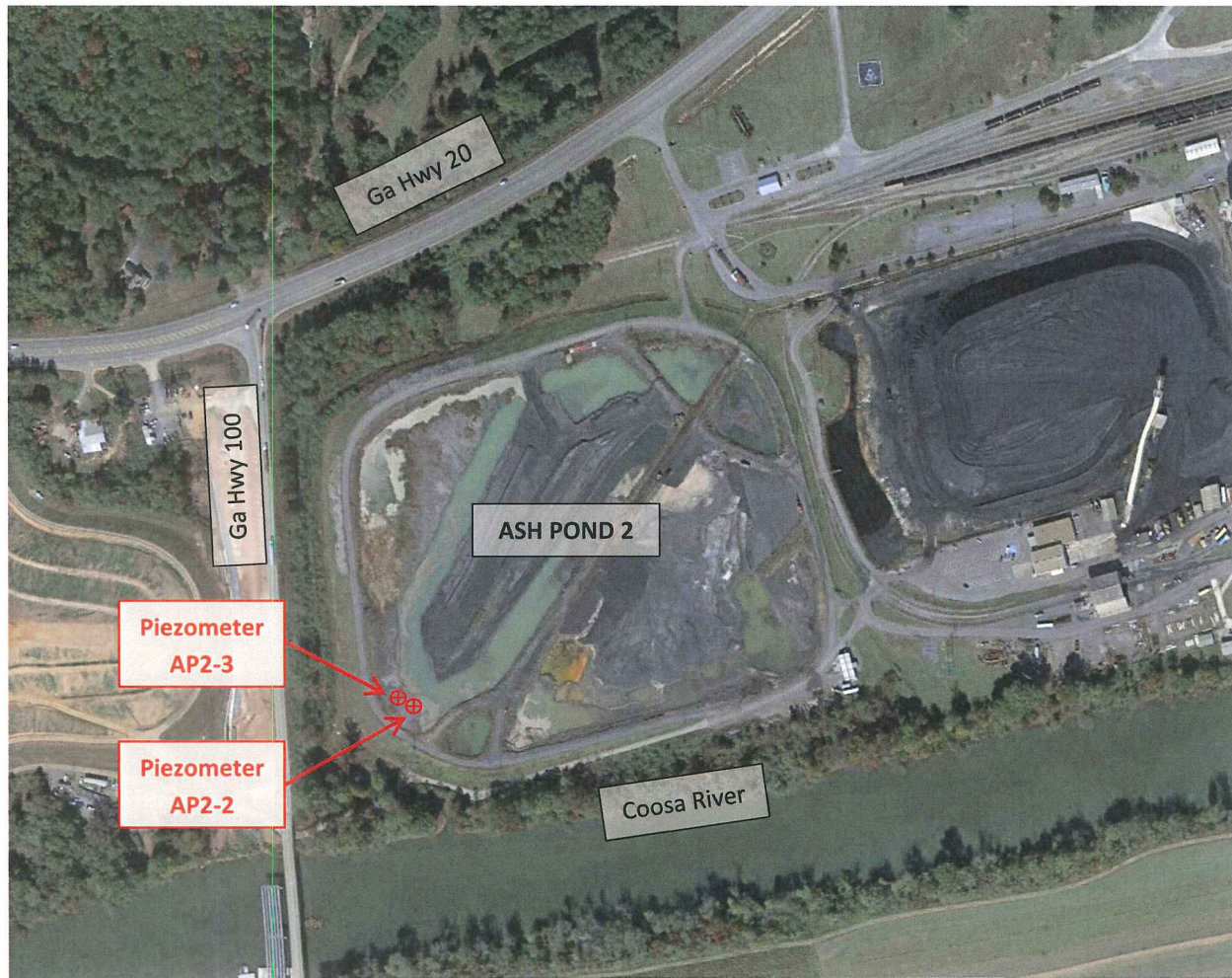
* This is the first 'Annual inspection by a qualified professional engineer' performed in accordance with 40 CFR Part 257.83.

This information will be included in subsequent annual inspection reports.

** Pond is divided into two operational areas. One area is utilized for wet-slucing of the ash. The second area is used to dry and process the ash for off-site landfilling. Volume varies continually in the ash pond based on new generation and the rate of removal.

+ Cubic yard estimates are derived by qualified personnel from available information.





**INSTRUMENTATION PLAN
PLANT HAMMOND ASH POND 2**