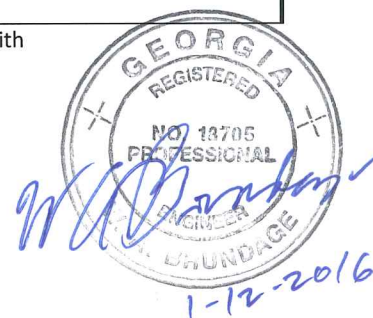
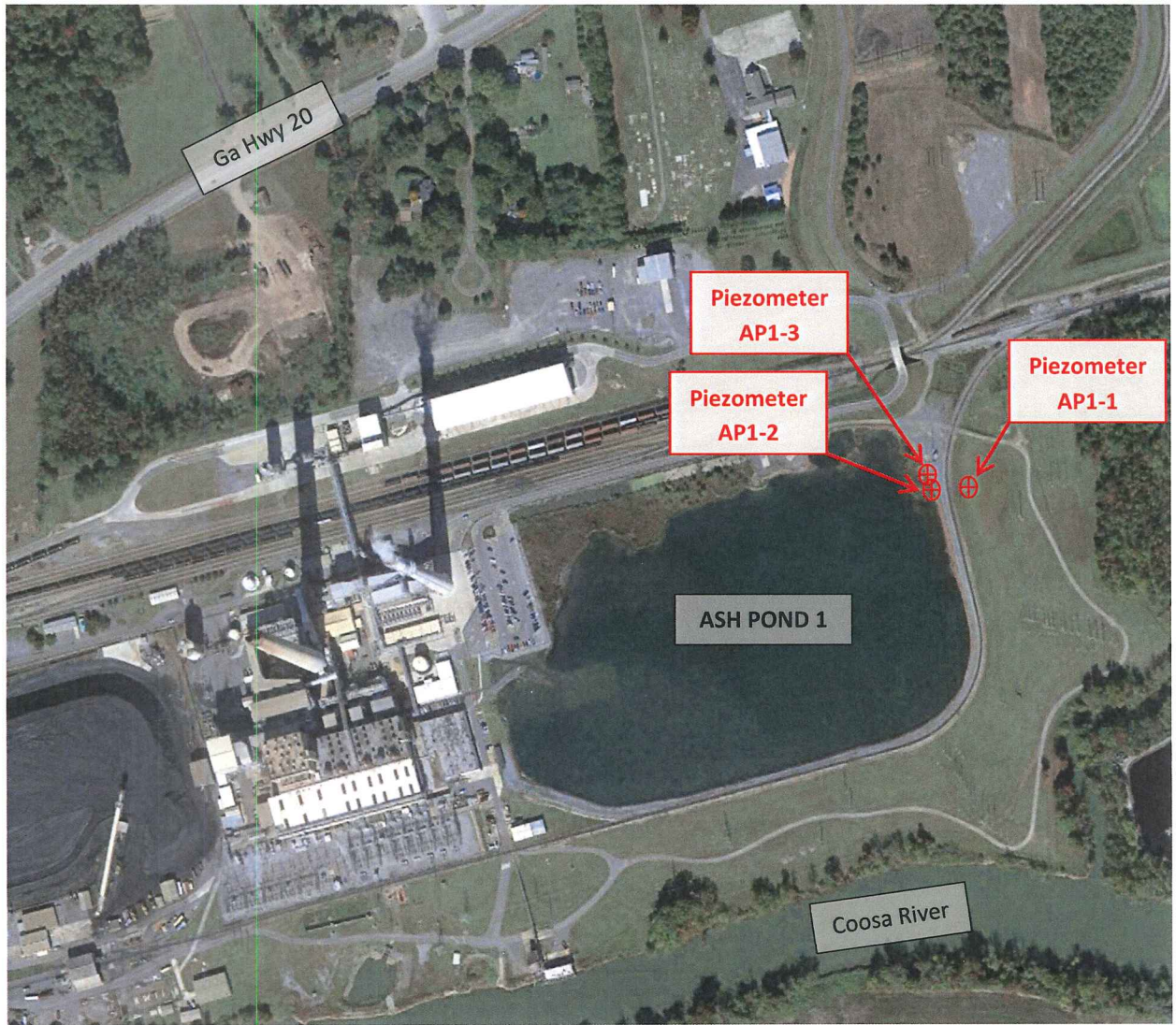


<b>257.83 (b) (2)</b>	<b>REPORT OF ANNUAL INSPECTION OF CCR SURFACE IMPOUNDMENT</b>		
	<b>FACILITY NAME:</b> Plant Hammond, Ash Pond 1 (AP-1)		
	<b>OWNER/OPERATOR OF FACILITY:</b> Georgia Power Company		
	<b>INSPECTION DATE:</b> October 27, 2015		
	<b>INSPECTING ENGINEER:</b> William A. Brundage, PE (Ga. PE License #18705)		
	Based on the results of my inspection and review of the data provided, it is my professional opinion that the report has been completed in accordance with 40 CFR 257.83(b).		
<b>(i)</b>	<b>ANY CHANGES IN GEOMETRY OF THE IMPOUNDING STRUCTURE SINCE THE PREVIOUS ANNUAL INSPECTION?</b>	<b>N/A*</b>	
	(IF YES, DESCRIBE):		
<b>(ii)</b>	<b>LOCATION AND TYPE OF EXISTING INSTRUMENTATION</b>	<b>SEE ATTACHED "INSTRUMENTATION PLAN"</b>	
<b>(ii)</b>	<b>MAXIMUM RECORDED READING OF EACH INSTRUMENT SINCE PREVIOUS ANNUAL INSPECTION</b>	<b>N/A *</b>	
<b>(iii)</b>	<b>APPROXIMATE MINIMUM, MAXIMUM AND PRESENT DEPTH AND ELEVATION OF THE IMPOUNDED WATER SINCE PREVIOUS ANNUAL INSPECTION</b>		
	MIN. DEPTH: N/A	MAX. DEPTH: N/A	PRESENT DEPTH: 12.6' (max)
	MIN. ELEVATION: N/A	MAX. ELEVATION: N/A	PRESENT. ELEVATION: 583
<b>(iii)</b>	<b>APPROXIMATE MINIMUM, MAXIMUM AND PRESENT DEPTH AND ELEVATION OF CCR SINCE PREVIOUS ANNUAL INSPECTION.</b>		
	MIN. DEPTH: N/A	MAX. DEPTH: N/A	PRESENT DEPTH: 19' (max)
	MIN. ELEVATION: N/A	MAX. ELEVATION: N/A	PRESENT ELEVATION: 584 (max)
<b>(iv)</b>	<b>APPROXIMATE STORAGE CAPACITY OF IMPOUNDING STRUCTURE AT TIME OF INSPECTION.</b>	<b>605,700 cy **</b>	
<b>(v)</b>	<b>APPROXIMATE VOLUME OF IMPOUNDED WATER AND CCR AT TIME OF INSPECTION</b>	<b>WATER:</b> 238,600 cy **	<b>CCR:</b> 367,100 cy **
<b>(vi)</b>	<b>ANY APPEARANCE OF AN ACTUAL OR POTENTIAL STRUCTURAL WEAKNESS OF THE CCR UNIT, IN ADDITION TO ANY EXISTING CONDITIONS THAT ARE DISRUPTING OR HAVE THE POTENTIAL TO DISRUPT THE OPERATION AND SAFETY OF THE CCR UNIT AND APPURTENANT STRUCTURES?</b>	<b>NO</b>	
	(IF YES, DESCRIBE):		
<b>(vii)</b>	<b>ANY OTHER CHANGE(S) WHICH MAY HAVE AFFECTED THE STABILITY OR OPERATION SINCE THE PREVIOUS ANNUAL INSPECTION?</b>	<b>N/A*</b>	
	(IF YES, DESCRIBE):		

\* This is the first 'Annual inspection by a qualified professional engineer' performed in accordance with 40 CFR Part 257.83. This information will be included in subsequent annual inspection reports.

\*\* Cubic yard estimates are derived by qualified personnel from available information.





**INSTRUMENTATION PLAN  
PLANT HAMMOND ASH POND 1**