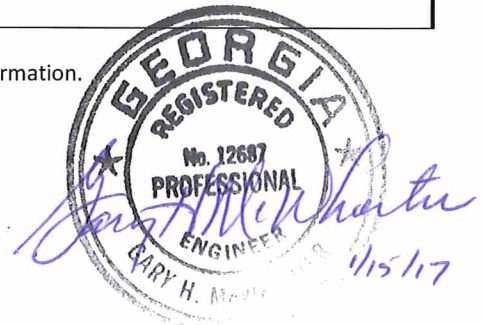
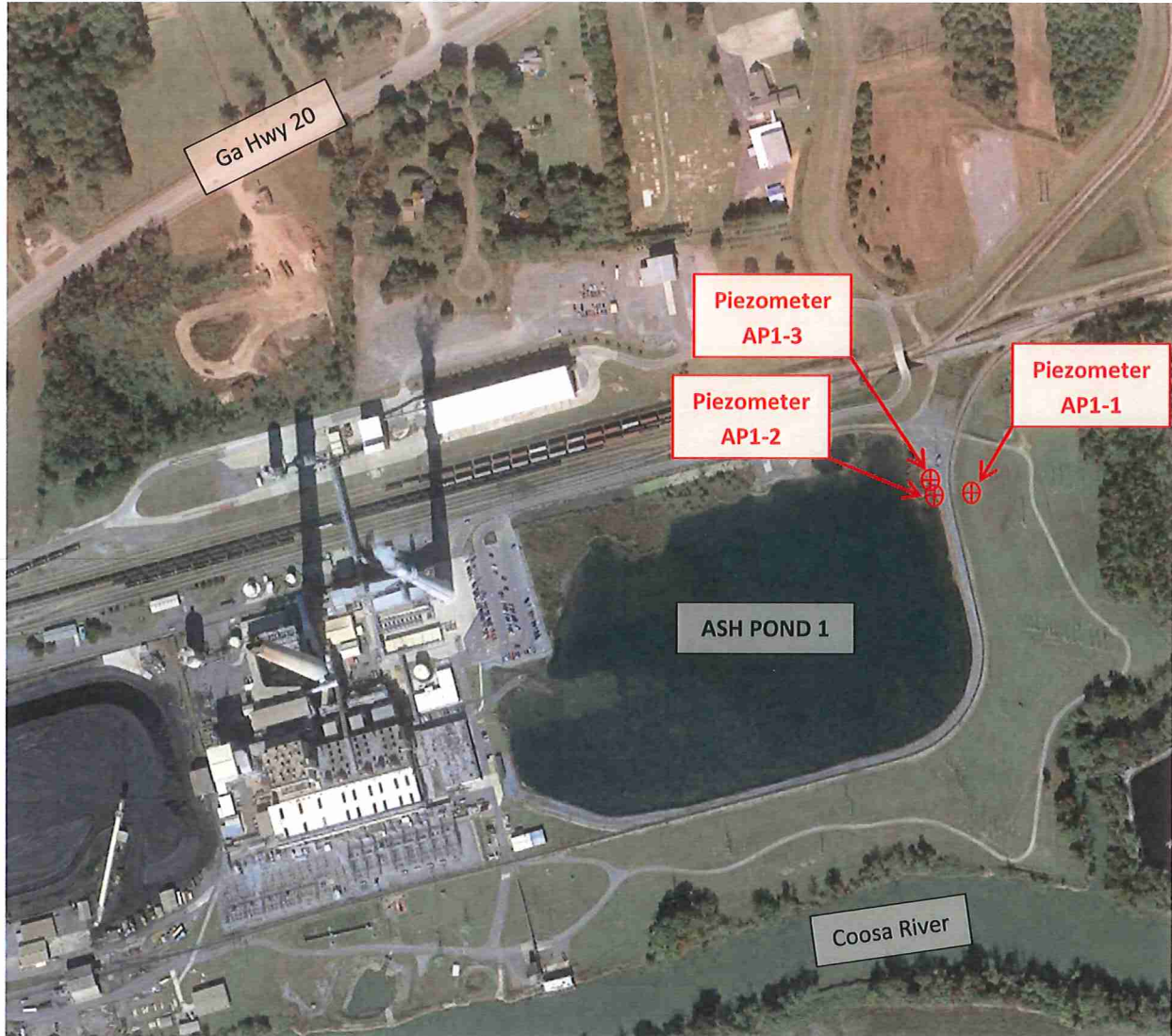


<b>257.83 (b) (2)</b>	<b>REPORT OF ANNUAL INSPECTION OF CCR SURFACE IMPOUNDMENT</b>		
	<b>FACILITY NAME:</b> Plant Hammond, Ash Pond 1 (AP-1)		
	<b>OWNER/OPERATOR OF FACILITY:</b> Georgia Power Company		
	<b>INSPECTION DATE:</b> November 1, 2016		
	<b>INSPECTING ENGINEER:</b> Gary H. McWhorter (GA PE # PE012687)		
<b>(i)</b>	<b>ANY CHANGES IN GEOMETRY OF THE IMPOUNDING STRUCTURE SINCE THE PREVIOUS ANNUAL INSPECTION?</b>	NO	
	(IF YES, DESCRIBE):		
<b>(ii)</b>	<b>LOCATION AND TYPE OF EXISTING INSTRUMENTATION</b>	SEE ATTACHED PLAN	
<b>(ii)</b>	<b>MAXIMUM RECORDED READING OF EACH INSTRUMENT SINCE PREVIOUS ANNUAL INSPECTION</b>	SEE ATTACHED TABLE	
<b>(iii)</b>	<b>APPROXIMATE MINIMUM, MAXIMUM AND PRESENT DEPTH AND ELEVATION OF THE IMPOUNDED WATER SINCE PREVIOUS ANNUAL INSPECTION</b>		
	MIN. DEPTH: 0'	MAX. DEPTH: 14'	PRESENT DEPTH: 14'
	MIN. ELEVATION: 570	MAX. ELEVATION: 584	PRESENT. ELEVATION: 584
<b>(iii)</b>	<b>APPROXIMATE MINIMUM, MAXIMUM AND PRESENT DEPTH AND ELEVATION OF CCR SINCE PREVIOUS ANNUAL INSPECTION.</b>		
	MIN. DEPTH: 0'	MAX. DEPTH: 19'	PRESENT DEPTH: 19' (max)
	MIN. ELEVATION: 565	MAX. ELEVATION: 584	PRESENT ELEVATION: 584 (max)
<b>(iv)</b>	<b>APPROXIMATE STORAGE CAPACITY OF IMPOUNDING STRUCTURE AT TIME OF INSPECTION.</b>	605,700 cy <sup>(1)</sup>	
<b>(v)</b>	<b>APPROXIMATE VOLUME OF IMPOUNDED WATER AND CCR AT TIME OF INSPECTION</b>	<b>WATER:</b> 238,600 cy <sup>(1)</sup>	<b>CCR:</b> 367,100 cy <sup>(1)</sup>
<b>(vi)</b>	<b>ANY APPEARANCE OF AN ACTUAL OR POTENTIAL STRUCTURAL WEAKNESS OF THE CCR UNIT, IN ADDITION TO ANY EXISTING CONDITIONS THAT ARE DISRUPTING OR HAVE THE POTENTIAL TO DISRUPT THE OPERATION AND SAFETY OF THE CCR UNIT AND APPURTENANT STRUCTURES?</b>	NO	
	(IF YES, DESCRIBE):		
<b>(vii)</b>	<b>ANY OTHER CHANGE(S) WHICH MAY HAVE AFFECTED THE STABILITY OR OPERATION SINCE THE PREVIOUS ANNUAL INSPECTION?</b>	NO	
	(IF YES, DESCRIBE):		

(1) Cubic yard estimates are derived by qualified personnel from available information.





**INSTRUMENTATION PLAN  
PLANT HAMMOND ASH POND 1**

**INSTRUMENTATION READINGS  
PLANT HAMMOND ASH POND 1**

<b>PIEZOMETER NUMBER</b>	<b>MAXIMUM RECORDED READING*</b>
AP1-1	EL 573
AP-1-2	EL 578
AP-1-3	EL 583

\*MAXIMUM RECORDED READING SINCE LAST ANNUAL INSPECTION; ROUNDED TO NEAREST FOOT