

CLOSURE DRAWINGS

PLANT HAMMOND - GEORGIA POWER

ASH POND 4 (AP-4)

DEWATERED CCR SURFACE IMPOUNDMENT

FLOYD COUNTY, GEORGIA

PREPARED FOR

GEORGIA POWER

PREPARED BY



INDEX OF SHEETS

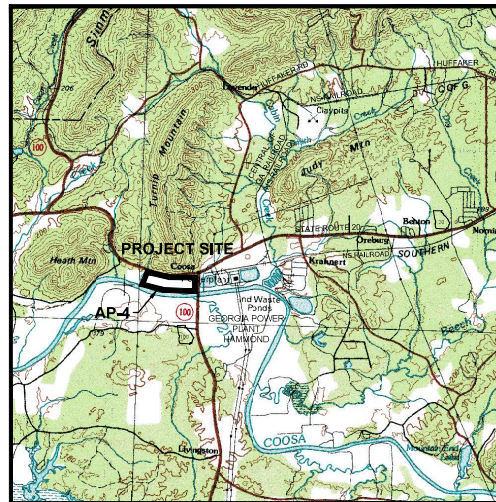
- 1 COVER SHEET
- 2 GENERAL NOTES
- 3 EXISTING CONDITIONS
- 3A INTERIM CAP IMPROVEMENT PLAN
- 4 EXCAVATION PLAN
- 5 FINAL GRADE PLAN
- 6 EROSION CONTROL PLAN
- 7 BASELINE PROFILE
- 8-9 CROSS SECTIONS
- 10-11 DETAILS
- 12 COMPLIANCE MONITORING NETWORK
- P467(4) PLANT HAMMOND ASH POND 4 PERMITTED SITE BOUNDARY
- 1 OF 1 ENVIRONMENTAL MONITORING PLAN

RESPONSIBLE OFFICIAL

GENERAL MANAGER
GEORGIA POWER ENVIRONMENTAL AFFAIRS
241 RALPH MCGILL BLVD NE
ATLANTA, GEORGIA 30308
404-506-6505

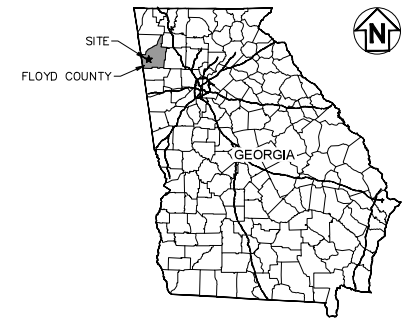
PROPERTY OWNER

GEORGIA POWER COMPANY
241 RALPH MCGILL BLVD.
ATLANTA, GEORGIA 30308



SITE LOCATION MAP

SCALE: 1"=5000'



LOCATION MAP
NOT TO SCALE




Digitally signed by Jonathan Keeling
Date: 2023.03.29 15:56:26 -0400

1	03/2023	ADDED SHEET	JM	JK
0	05/2020	INITIAL SUBMITTAL TO EPD	TJ	JK
REV	DATE	DESCRIPTION	DRWN	CHKD
COVER SHEET				
CLOSURE DRAWINGS				
FOR				
PLANT HAMMOND - GEORGIA POWER				
ASH POND 4 (AP-4) - DEWATERED CCR SURFACE IMPOUNDMENT				
FLOYD COUNTY, GEORGIA				
1110 Market Street, Suite 214A Chattanooga, Tennessee 37402-2853 www.stantec.com				
PROJ. NO.	175618707	DWG.	0_187070-H01-CVR-JH	EDIT 03/2023
SCALE	AS SHOWN	SHEET 1 OF 12		
DATE	APRIL 2020			

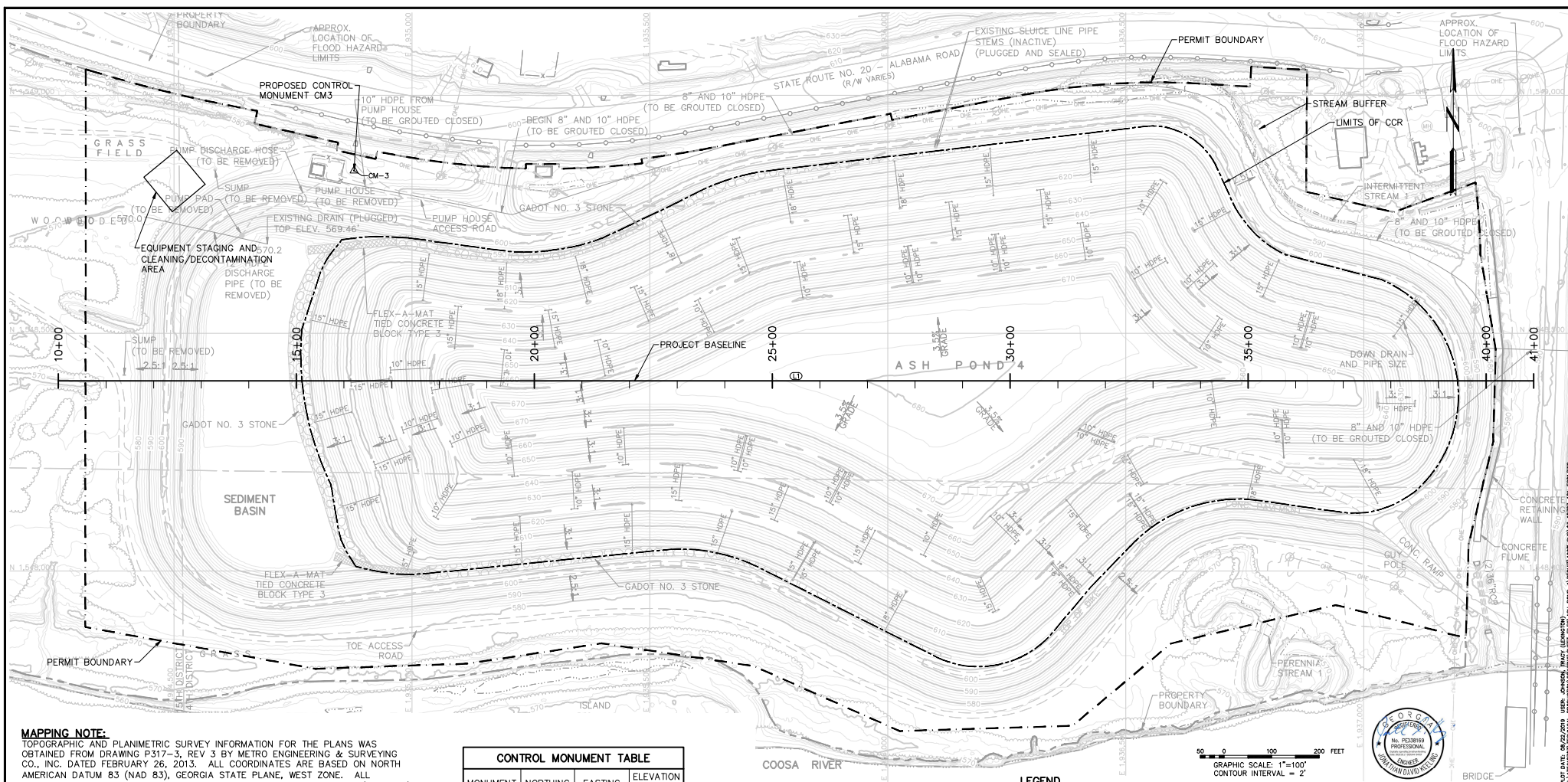
A.T.M. AMERICAN SOCIETY OF TESTING MATERIALS
 A.S.H.T.O. AMERICAN ASSOCIATION OF STATE
 TRANSPORTATION OFFICIALS
 B.C.M. BITUMINOUS COATED CORRUGATED METAL PIPE
 B.M.P.S. BEST MANAGEMENT PRACTICES
 B.O.T. BOTTOM
 B.O.P. BOTTOM OF PIPE
 C.C.P. CENTER TO CENTER
 C.F. CURB FEET
 C. CENTERLINE
 CM. CENTIMETER
 C. CLASS (OF PIPE)
 C.B. CLEAR
 CON. CONCRETE
 CONT. CONTINUOUS
 C.M.P. CORRUGATED METAL PIPE
 C.V.C. CORRUGATED POLYVINYL CHLORIDE PIPE
 S.C.S. CROSS SLOPE
 C & R. CURB & GUTTER
 D. DROP INLET
 D.A. DIAMETER
 D.T. DITCH
 D.R. DRAINAGE RATIO
 DWG. DRAWING
 D. DISTANCE FROM P.V.I. TO V.C. @ P.V.I.
 D.D. DIRT DIRT
 D.E.T. DEPARTMENT OF TRANSPORTATION
 E.W. EACH WAY
 E.O.E.D. EXISTING OF PAVEMENT
 EL. ELEVATION
 F.F. FACE OF CURB
 F.F. FINISH FLOOR
 F.S. FLARED END SECTION
 F.B. FLAT BOTTOM DITCH
 F.F. FIRE HYDRANT
 FT. FEET
 G.C.M.P. GALVANIZED CORRUGATED METAL PIPE
 G.P. GEOPOLYESTER GLASS FIBER
 G.P.O. GEORGIA POWER COMPANY
 GR. GRADE
 D. BRK. GRADE BREAK
 G.A.B. GRADE AGGREGATE BASE
 G.A. GRADE SLICET
 H.D.P.E. HIGH DENSITY POLYETHYLENE PIPE
 H.H. HIGH POINT
 L.E. LEVEL OF ELEVATION
 H.D. JUNCTION BOX
 K. PERMEABILITY
 L.C.S. LOCAL COLLECTION & RECOVERY SYSTEM
 L.O.D. LIMITS OF DISTURBANCE
 L.B. LEAD
 L.E. LINEAR FEET
 N.T.S. NOT TO SCALE
 L.P. LOW POINT
 M. MANHOLE
 M.X. MAXIMUM
 MIN. MINIMUM
 O.C. ON CENTER
 O.D. OUTSIDE DIAMETER
 O.F. OUTSIDE FACE OF BUILDING
 O.V. OVER
 P.B.D. PAVED
 P.E.B. PERFORATED
 P.I. POINT OF INTERSECTION
 P.I.V. POST INDICATOR VALVE
 P.C. POINT OF CURVE
 P.S. POINT OF SWITCH
 P.S.I. POUND PER SQUARE INCH
 P. POINT OF TANGENT
 P.V.I. POINT OF VERTICAL INTERSECTION
 P.V.C. POINT OF VERTICAL CURVE
 V.V.C. POINT OF VERTICAL TANGENT
 P.V.C. POLYVINYL CHLORIDE PIPE
 P.S.I. POUNDS PER SQUARE INCH
 P.S.F. POUND PER SQUARE FOOT
 P.P. POWER POLE
 R.O.T. RIGHT OF WAY
 P.O.R. PROJECT SUPERINTENDENT MANAGER
 R. PROPERTY LINE
 R.A.B. REINFORCED ARCH PIPE
 R.C.P. REINFORCED CONCRETE PIPE
 RE. REVISION
 REQ'D. REQUIRED
 REV. REVISION
 BOX
 S.H. SCHEDULE
 SHLD. SHOULDER
 SH. SHEET
 S.S. SIDE SLOPE
 S.D. SLOPE
 STD. STANDARD
 T & B. TOP AND BOTTOM
 T/C. TOP OF CURB
 T.O.P. TOP OF PIPE
 T/R. TOP OF RAIL
 TYP. TYPICAL
 V.V. VALLEY GUTTER
 V.C. VERTICAL CURVE
 W. WITH
 W.P. WORK POINT

- PROJECT GRID IS GEORGIA STATE PLANE GRID, NAD 83, WEST ZONE.
2. ALL EROSION CONTROL MEASURES SHALL BE IN CONFORMANCE WITH THE CURRENT EDITION OF THE MANUAL FOR EROSION AND SEDIMENT CONTROL IN GEORGIA. STORMWATER CONTROLS AND BEST MANAGEMENT PRACTICES SHALL BE DESIGNED, INSTALLED AND MAINTAINED IN ACCORDANCE WITH THE APPLICABLE NPDES CONSTRUCTION STORMWATER DISCHARGE GENERAL PERMIT, NPDES INDUSTRIAL STORMWATER DISCHARGE GENERAL PERMIT AND/OR THE FACILITY'S NPDES INDUSTRIAL WASTEWATER DISCHARGE INDIVIDUAL PERMIT.
3. STORM WATER DISCHARGES ASSOCIATED WITH ASH POND CLOSURE ACTIVITIES WILL BE COVERED UNDER THE APPLICABLE NPDES CONSTRUCTION STORMWATER DISCHARGE GENERAL PERMIT, NPDES INDUSTRIAL STORMWATER DISCHARGE GENERAL PERMIT AND/OR THE FACILITY'S NPDES INDUSTRIAL WASTEWATER DISCHARGE INDIVIDUAL PERMIT.
4. STATE WATERS BUFFERS SHALL REMAIN UNDISTURBED, EXCEPT WHERE ENCROACHMENT IS REQUIRED TO FACILITATE ASH POND CLOSURE ACTIVITIES, UNLESS OTHERWISE EXEMPTED BY THE APPROPRIATE NPDES CONSTRUCTION STORMWATER DISCHARGE GENERAL PERMIT. A STATE WATERS BUFFER VARIANCE SHALL BE OBTAINED FROM THE NPDES WATERSHED PROTECTION BRANCH PRIOR TO NOTIFY ENCROACHMENT. GEORGIA EPD'S SOLID WASTE MANAGEMENT BRANCH SHALL BE NOTIFIED WHEN GPC ENVIRONMENTAL AFFAIRS APPLIES FOR A STATE WATERS BUFFER VARIANCE. CONTACT GPC ENVIRONMENTAL AFFAIRS FOR ASSISTANCE.
5. PRIOR TO COMMENCING CONSTRUCTION ACTIVITIES FOR THIS PROJECT, THE PERMITTED SOURCE OF THE DISTURBANCE AND DISTURBANCE AND STATE WATERS BUFFERS WITHIN 200 FEET OF THE LIMITS OF DISTURBANCE OR WITHIN THE PROPERTY BOUNDARY (WHICHEVER IS CLOSER) SHALL BE CLEARLY FLAGGED AND STAKED. THESE MARKINGS SHALL BE MAINTAINED UNTIL CLOSURE OF CONSTRUCTION / CLOSURE ACTIVITIES. SHOULD ANY OF THE MARKINGS BE DISTURBED, THE CONTRACTOR SHALL NOTIFY GEORGIA POWER COMPANY IMMEDIATELY. ALL CONSTRUCTION PERSONNEL SHALL BE SHOWN THE LOCATION OF THE LIMITS OF DISTURBANCE, STATE WATERS BUFFERS AND WETLANDS OUTSIDE THE LIMITS OF DISTURBANCE TO PREVENT HEAVY EQUIPMENT ENCROACHMENT INTO THESE AREAS.
6. THE GRADE CONTOURS SHOWN IN THE ASH POND, AGGREGATE ROADS, DITCHES, AND AT EXTERIOR SLOPES ARE FINAL GRADE ELEVATIONS. APPROPRIATE SOIL, CLAY, ROCK, ETC. THICKNESSES SHALL BE APPLIED TO CALCULATE SUBGRADE ELEVATIONS.
7. GPC SHALL PROVIDE DESIGNATED ACCESS ROUTE/DIRECTIONS ACROSS THE PLANT PROPERTY.
8. EXISTING ACCESS AND PLANT ROADS SHALL BE MAINTAINED AND REPAIRED AS NECESSARY DURING CONSTRUCTION.
9. ALL DETAHERING, SURFACE WATER RUNOFF CONTROL, PROVISIONS FOR DRAINAGE FOR EXCAVATIONS, AND FOR THE PLACEMENT OF MATERIALS SHALL BE PLANNED AND OPERATED BASED ON CONSTRUCTION NEEDS.
10. ALL WORK SHALL BE IN COMPLIANCE WITH CURRENT OCCUPATIONAL SAFETY AND HEALTH ADMINISTRATION REGULATIONS. ALL SHORING/OBRIBLES REQUIRED FOR VASTATION OF PIPES AND APPURTENANCES INCLUDING ANY DEEP EXCAVATIONS REQUIRE AN ENGINEER'S DESIGN.
11. STAGING AREAS AND EQUIPMENT MAINTENANCE AREAS SHALL BE LOCATED AT LEAST 200 FEET FROM STREAM BANKS TO MINIMIZE THE POTENTIAL FOR WASH WATER, PETROLEUM PRODUCTS, OR OTHER CONTAMINANTS FROM CONSTRUCTION EQUIPMENT ENTERING THE STREAMS.
12. CONSTRUCTION DEBRIS, FLOWABLE FILLS, OLD SUPPORT MATERIALS OR OTHER REFUSE SHALL NOT BE PLACED IN STREAMS OR IN AREAS WHERE MIGRATION INTO STREAMS AND/OR WETLANDS COULD REASONABLY BE EXPECTED.
13. THE CLEAN-UP OF ALL ON-SITE DITCHES, PIPES, MANHOLES, INLETS, ETC. THAT RECEIVE STORMWATER RUNOFF FROM SITE CONSTRUCTION ACTIVITIES SHALL BE PERFORMED.
14. THE COR REMOVAL STRATEGY IS PROVIDED IN THE CQA PLAN.
15. THE EXCAVATION SEQUENCING PLAN IS PROVIDED IN THE CLOSURE PLAN.



GENERAL NOTES			
<h1 style="text-align: center;">CLOSURE DRAWINGS</h1> <p style="text-align: center;">FOR</p> <h2 style="text-align: center;">PLANT HAMMOND - GEORGIA POWER</h2> <p style="text-align: center;">ASH POND 4 (AP-4) - DEWATERED COB SURFACE IMPOUNDMENT</p> <p style="text-align: center;">FLOYD COUNTY, GEORGIA</p>			
<div style="display: flex; justify-content: space-between; align-items: center;"> <div> <p>1110 Market Street, Suite 214A Chattanooga, Tennessee 37402-2863 www.stantec.com</p> </div> <div style="text-align: center;">  <p>Stantec</p> </div> </div>			
PROJ. NO.	17462107	DWG.	18.07.000-02N1
SCALE	AS SHOWN	EDIT	MM/DD/YY
DATE	NOVEMBER 2018	SHEET	2 OF 12

PLOT DATE: 11/08/2018 USER: CHAMBERS, SONIA
\\US1243-F01\SHARED_PROJECTS\17661870\TECHNICAL_PRODUCTION\DRAWING\SHEET_FILES\ASH_POND_4\PERMIT\100%_SUB\187207-002-CN.DWG

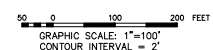


CONTROL MONUMENT TABLE			
MONUMENT	NORTHING	EASTING	ELEVATION (FEET)
CM-3	1,548,841.86	1,934,878.26	588.00

TABLE OF PROJECT BASELINE COORDINATES							
NUMBER	BEGIN STATION	NORTHING	EASTING	LENGTH	BEARING	END STATION	NORTHING
L1	10+00.00	1,548,399.91	1,934,257.13	3100.00'	N90°00'00"E	41+00.00	1,548,399.91



LEGEND	
500	EXISTING INDEX CONTOUR
---	EXISTING INTERMEDIATE CONTOUR
---	EDGE OF WATER
---	FLOOD HAZARD LIMITS
---	APPROXIMATE LAND LOT LINE
---	GRAVEL ROAD
---	TREE LINE
---	FENCE
---	OVERHEAD ELECTRIC POWER POLE
---	PERMIT BOUNDARY
---	PROPERTY BOUNDARY
---	STREAM BUFFER
---	GUARDRAIL
---	LIMITS OF CCR



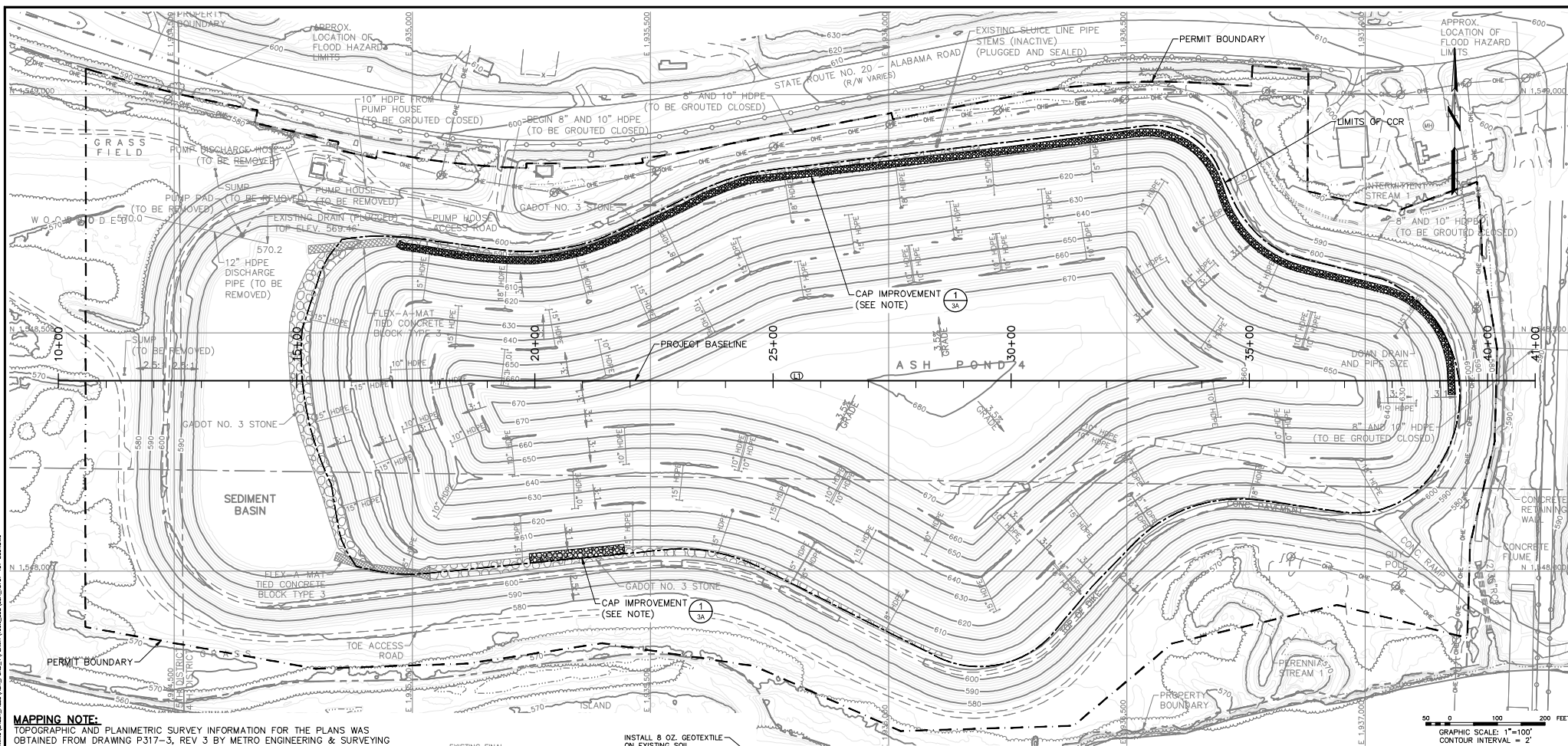
EXISTING CONDITIONS

CLOSURE DRAWINGS
 FOR
 PLANT HAMMOND - GEORGIA POWER
 ASH POND 4 (AP-4) - DEWATERED CCR SURFACE IMPOUNDMENT
 FLOYD COUNTY, GEORGIA

Stantec

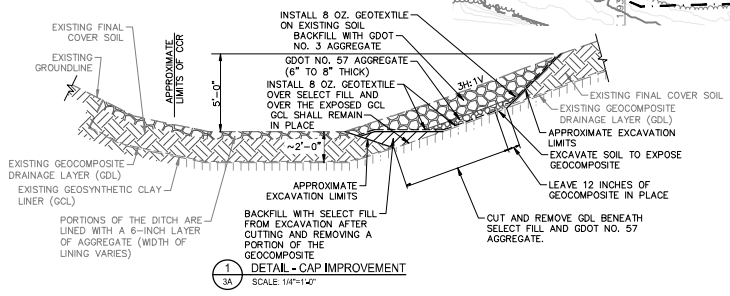
1110 Market Street, Suite 214A
 Chattanooga, Tennessee 37402-2863
 www.stantec.com

PROJ. NO.	175618707	DWG.	03_18707-101-001	EDT	04/03/20
SCALE	1"=100'				
DATE	APRIL 2020	SHEET 3 OF 12			



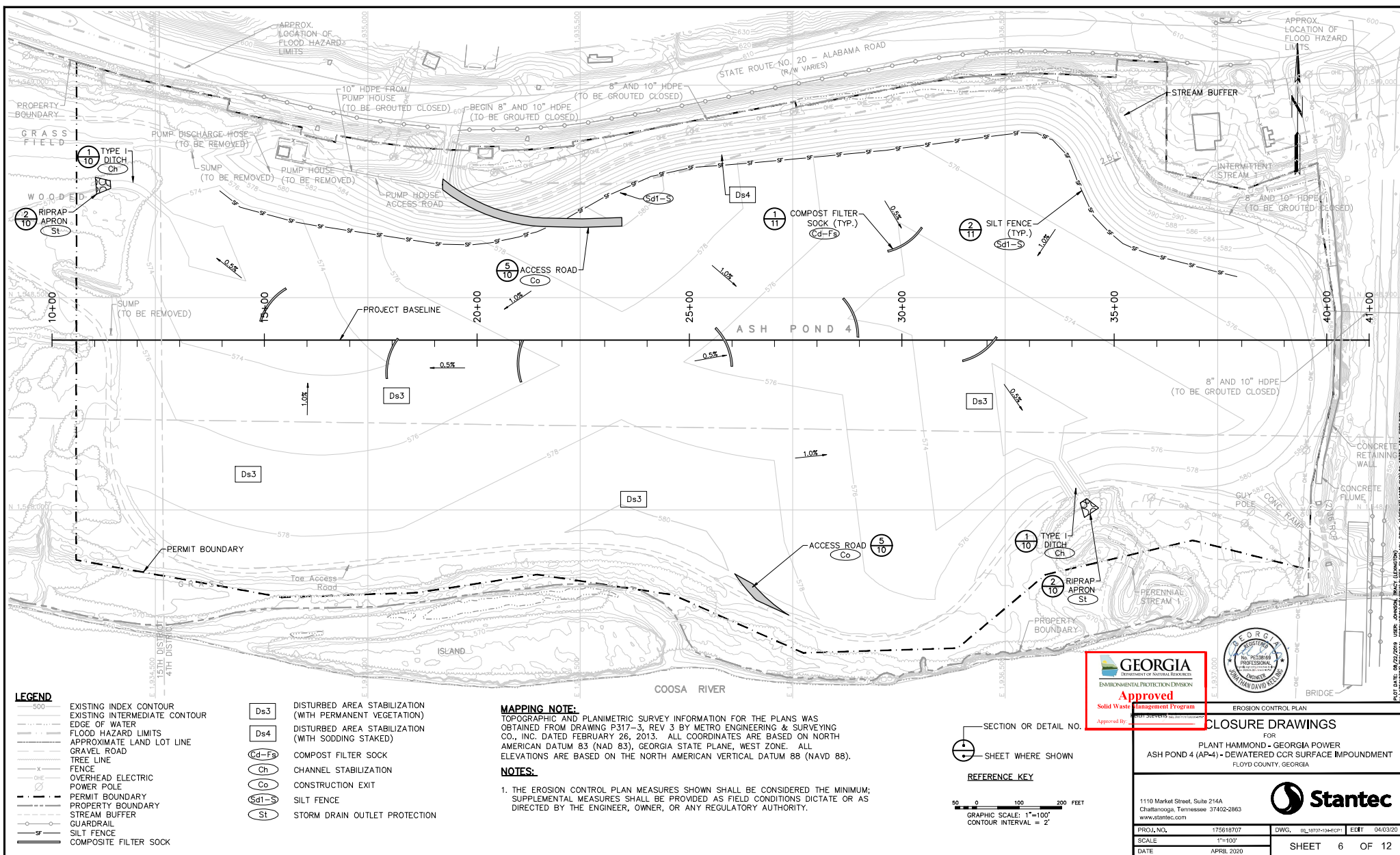
MAPPING NOTE:
TOPOGRAPHIC AND PLANIMETRIC SURVEY INFORMATION FOR THE PLANS WAS OBTAINED FROM DRAWING P317-3, REV 3 BY METRO ENGINEERING & SURVEYING CO., INC. DATED FEBRUARY 26, 2013. ALL COORDINATES ARE BASED ON NORTH AMERICAN DATUM 83 (NAD 83), GEORGIA STATE PLANE, WEST ZONE. ALL ELEVATIONS ARE BASED ON THE NORTH AMERICAN VERTICAL DATUM 88 (NAVD 88).

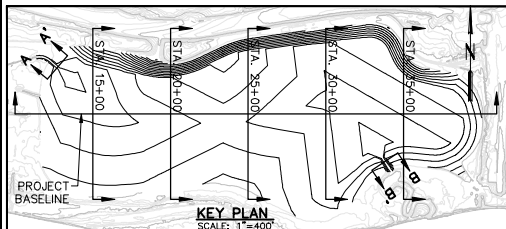
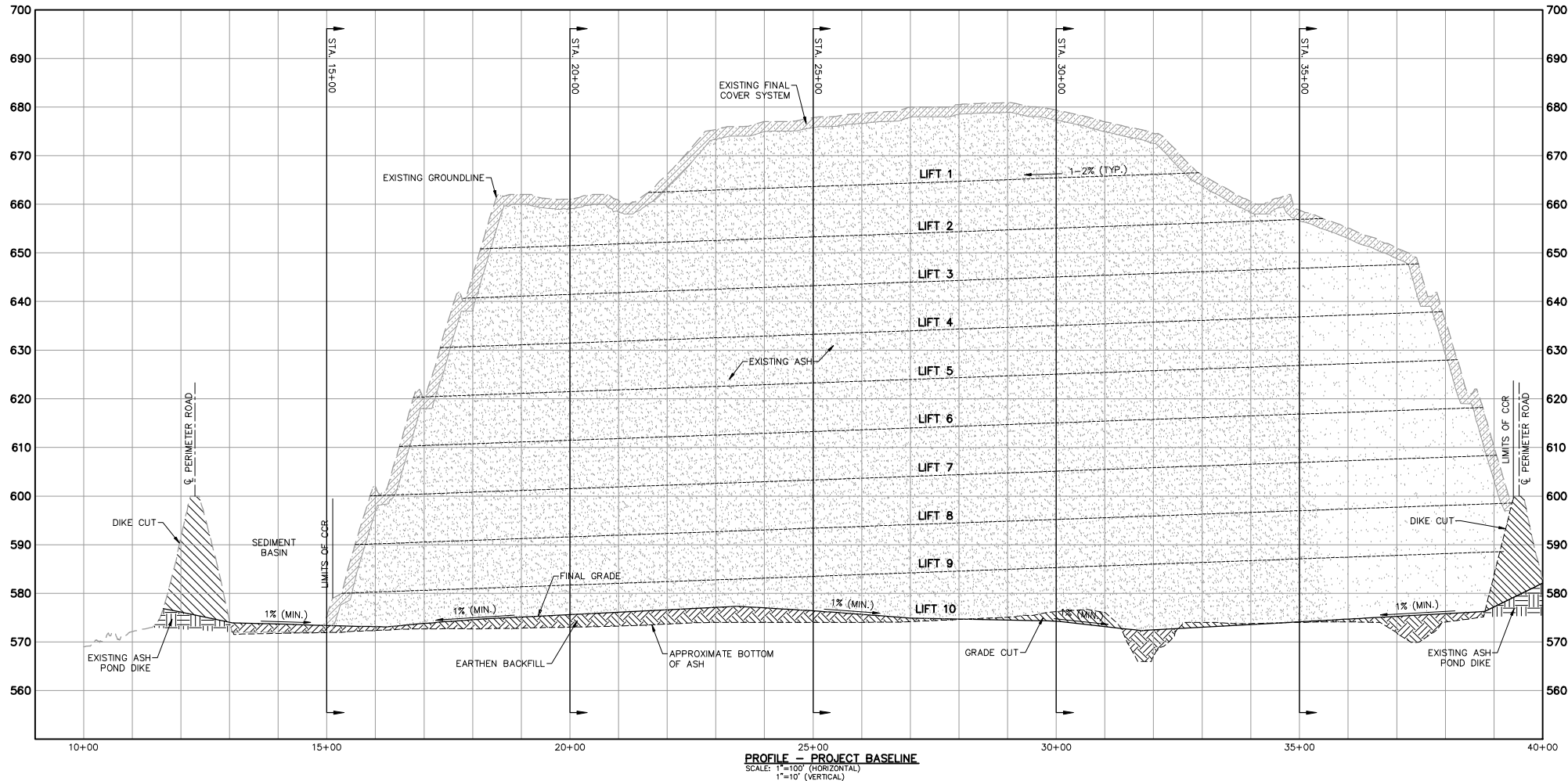
NOTE:
THE INTERIM CAP IMPROVEMENTS SHOWN ARE BEING IMPLEMENTED IN THE FIELD AS NECESSARY TO IMPROVE CAP RESILIENCE PRIOR TO CLOSURE. THIS CAP IMPROVEMENT MAY BE IMPLEMENTED IN OTHER AREAS AS NEEDED BASED ON SITE CONDITIONS.



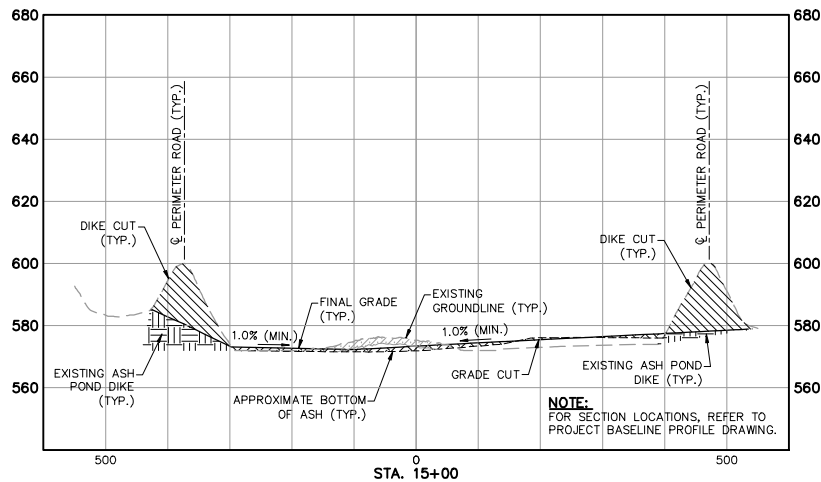
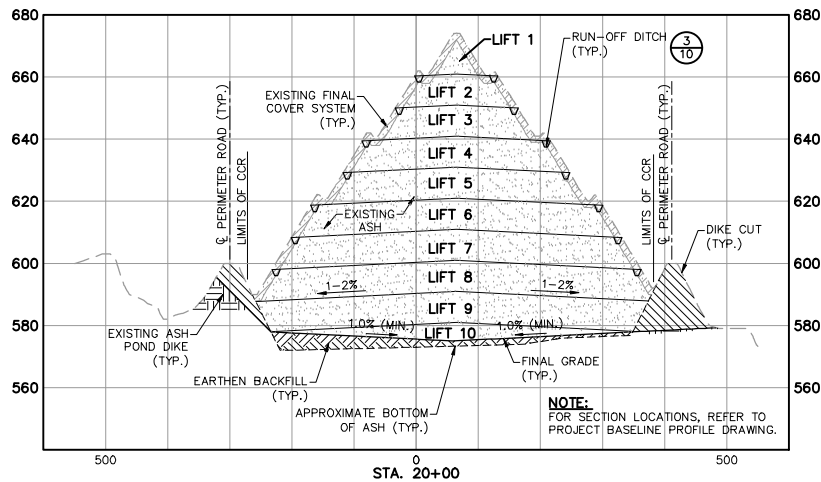
- LEGEND**
- 500 — EXISTING INDEX CONTOUR
 - - - - - EXISTING INTERMEDIATE CONTOUR
 - — — — — EDGE OF WATER
 - - - - - FLOOD HAZARD LIMITS
 - - - - - APPROXIMATE LAND LOT LINE
 - - - - - GRAVEL ROAD
 - - - - - TREE LINE
 - - - - - FENCE
 - - - - - OVERHEAD ELECTRIC POWER POLE
 - - - - - PERMIT BOUNDARY
 - - - - - PROPERTY BOUNDARY
 - - - - - GUARDRAIL
 - - - - - LIMITS OF CCR

G 03/2023		SUBMITTAL TO EPD		JM	MV
REV	DATE	DESCRIPTION		DRWN	CHKD
INTERIM CAP IMPROVEMENT PLAN					
CLOSURE DRAWINGS					
FOR					
PLANT HAMMOND - GEORGIA POWER					
ASH POND 4 (AP-4) - DEWATERED CCR SURFACE IMPOUNDMENT					
FLOYD COUNTY, GEORGIA					
1110 Market Street, Suite 214A Chattanooga, Tennessee 37402-2863 www.stantec.com					
PROJ. NO.		175618707		DWG. NO. 187618707-01	
SCALE		1"=100'		EDIT 03/2023	
DATE		FEBRUARY 2023		SHEET 3A OF 12	

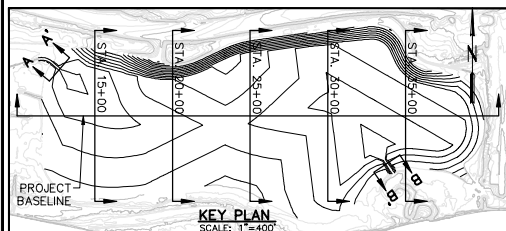
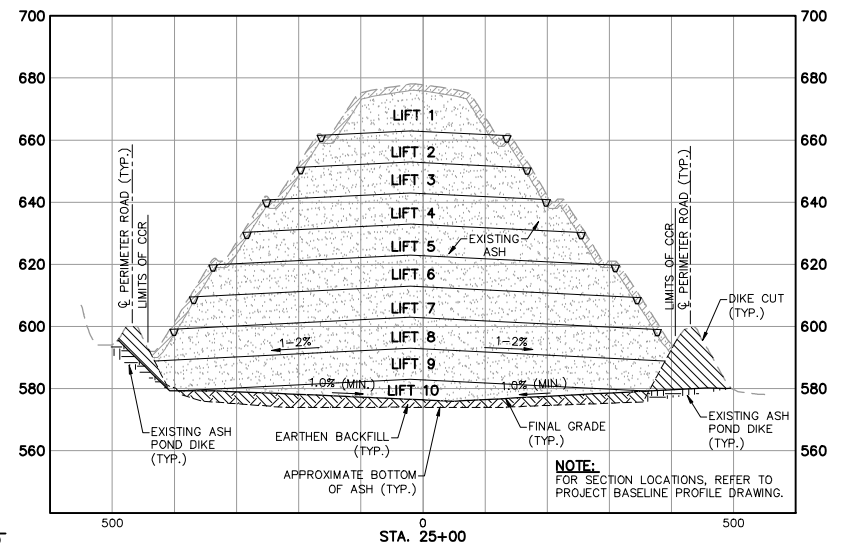




CLOSURE DRAWINGS			
FOR			
PLANT HAMMOND - GEORGIA POWER			
ASH POND 4 (AP-4) - DEWATERED CCR SURFACE IMPOUNDMENT			
FLOYD COUNTY, GEORGIA			
1110 Market Street, Suite 214A Chattanooga, Tennessee 37402-2863 www.stantec.com			
PROJ. NO.	175618707	DWG.	07-18707-361-PP-01
SCALE	AS SHOWN	EDIT	MM/DD/YY
DATE	AUGUST 2019	SHEET 7 OF 12	



CROSS SECTIONS
SCALE: 1"=100' (HORIZONTAL)
1"=20' (VERTICAL)

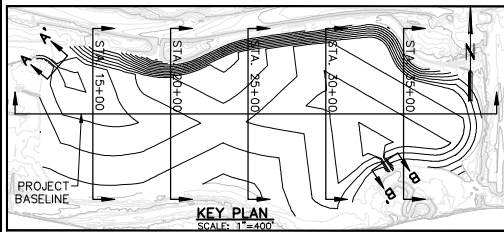
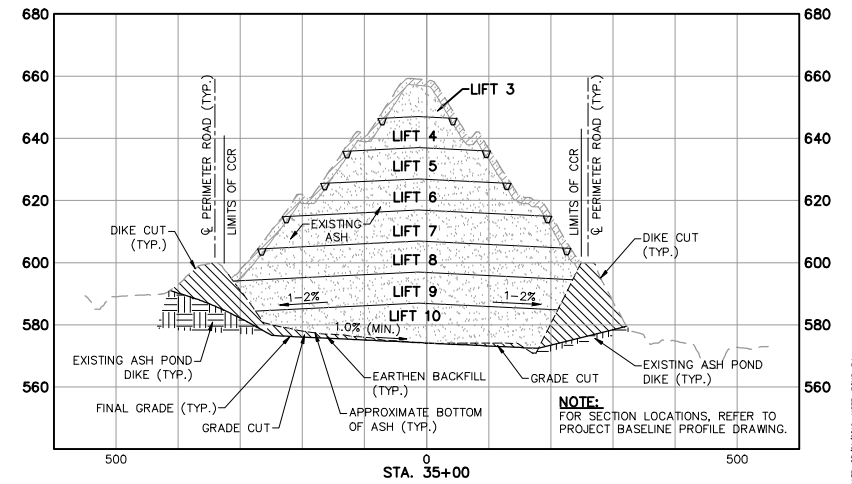
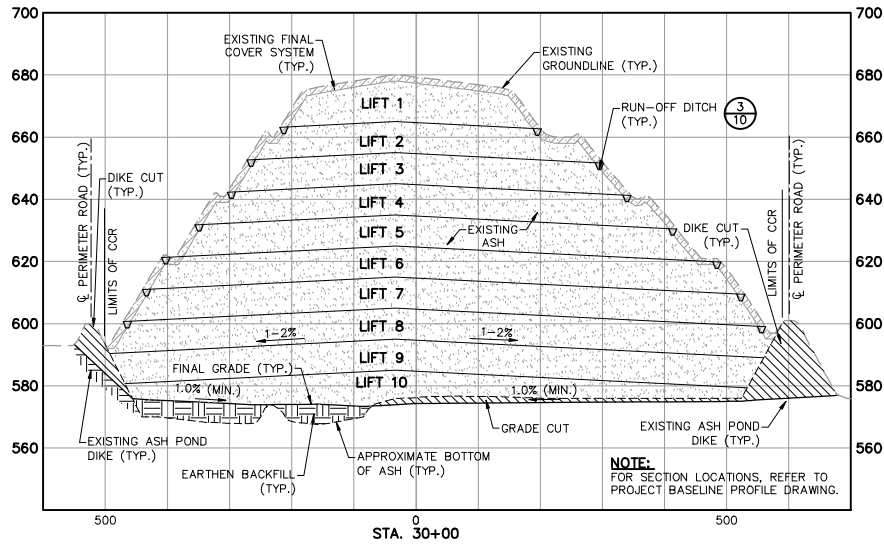
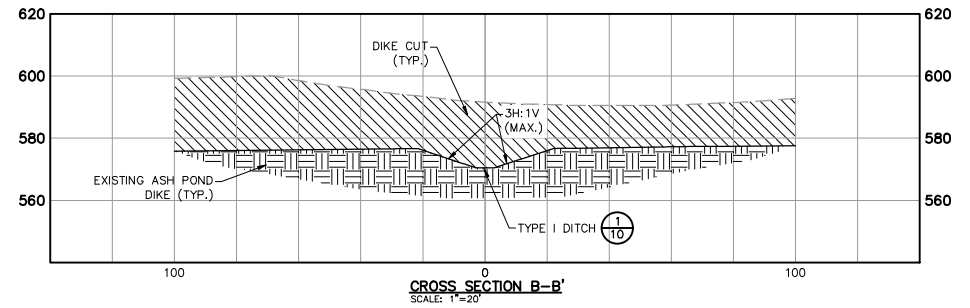
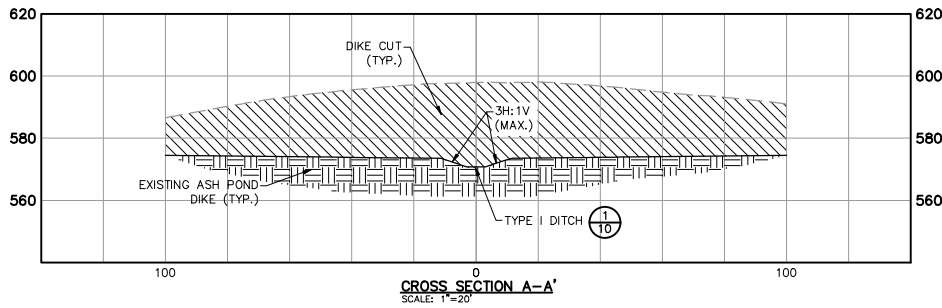


SECTION OR DETAIL NO.
SHEET WHERE SHOWN
REFERENCE KEY



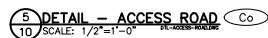
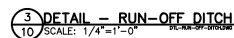
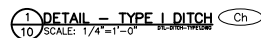
CROSS SECTIONS			
CLOSURE DRAWINGS			
FOR			
PLANT HAMMOND - GEORGIA POWER			
ASH POND 4 (AP-4) - DEWATERED CCR SURFACE IMPOUNDMENT			
FLOYD COUNTY, GEORGIA			
1110 Market Street, Suite 214A Chattanooga, Tennessee 37402-2863 www.stantec.com			
PROJ. NO.	175618707	DWG.	08-09, 18707-302-X301
SCALE	AS SHOWN	EDIT	MM/DD/YY
DATE	AUGUST 2019	SHEET	8 OF 12






SECTION OR DETAIL NO.
SHEET WHERE SHOWN
REFERENCE KEY

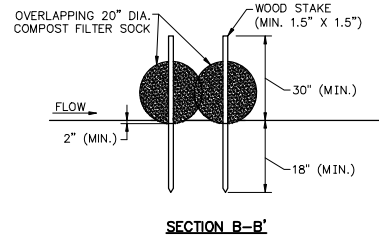
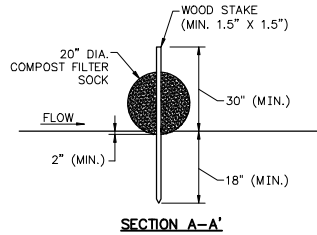
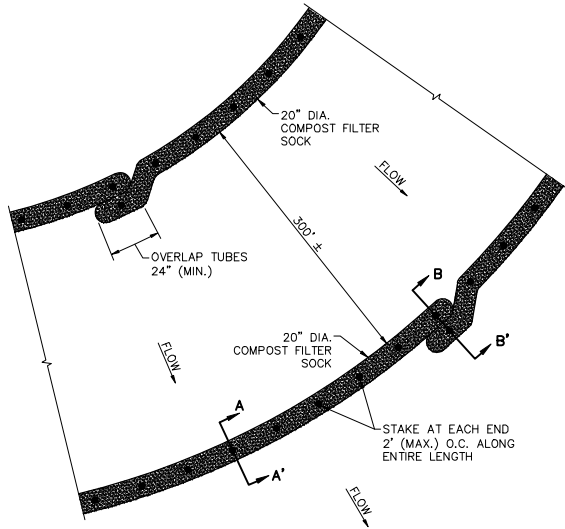
CROSS SECTIONS			
CLOSURE DRAWINGS			
FOR			
PLANT HAMMOND - GEORGIA POWER			
ASH POND 4 (AP-4) - DEWATERED CCR SURFACE IMPOUNDMENT			
FLOYD COUNTY, GEORGIA			
1110 Market Street, Suite 214A Chattanooga, Tennessee 37402-2863 www.stantec.com			
PROJ. NO.	175618707	DWG.	08-09_18707-302-350
SCALE	AS SHOWN	EDIT	MM/DD/YY
DATE	AUGUST 2019	SHEET	9 OF 12



REFERENCE KEY

DETAILS			
<h1 style="text-align: center;">CLOSURE DRAWINGS</h1> <p style="text-align: center;">FOR PLANT HAMMOND - GEORGIA POWER ASH POND 4 (AP-4) - DEWATERED CCR SURFACE IMPROVEMENT FLOYD COUNTY, GEORGIA</p>			
<div style="display: flex; justify-content: space-between; align-items: center;"> <div> <p>1110 Market Street, Suite 214A Chattanooga, Tennessee 37402-2863 www.stantec.com</p> </div> <div style="text-align: center;">  <div style="font-size: 2em; font-weight: bold; margin-top: 10px;">Stantec</div> </div> </div>			
PROJ. NO.	175616707	DWG.	18107-548-012
SCALE	AS SHOWN	EDIT	MM/DD/YYYY
DATE	NOVEMBER 2018	SHEET 10 OF 12	

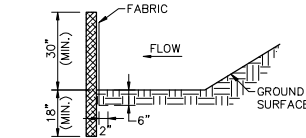
LOT DATE: 11/04/2018 USER: CHAMBERS, SONIA



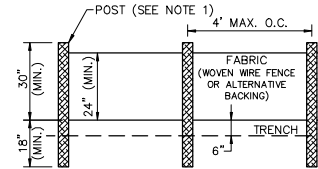
NOTES:

1. COMPOST FILTER SOCKS SHALL BE INSTALLED WITH WOODEN STAKES (MIN. 1.5" X 1.5" ACTUAL). THE STAKE SHALL BE EMBEDDED A MINIMUM OF 18 INCHES.
2. COMPOST FILTER SOCKS SHALL BE TRENCHED IN A MINIMUM OF 2 INCHES.
3. IF MORE THAN ONE COMPOST FILTER SOCK IS PLACED IN A ROW IN SLOPE APPLICATION, THE COMPOST FILTER SOCKS SHALL BE OVERLAPPED A MINIMUM OF 24 INCHES TO PREVENT FLOW AND SEDIMENT FROM PASSING THROUGH THE FIELD JOINT. WHEN USED IN DITCHES, TWO ROWS OF FILTER SOCKS SHALL BE PLACED ON THE CHANNEL BOTTOM WITH STAGGERED JOINTS AS SHOWN.
4. CONSTRUCTED IN ACCORDANCE WITH CHAPTER 6 BMP STANDARDS AND SPECIFICATIONS FOR GENERAL LAND-DISTURBING ACTIVITIES OF THE GEORGIA SOIL AND WATER CONSERVATION COMMISSION.

1 DETAIL - COMPOST FILTER SOCK (Cd-Fs)
11 NOT TO SCALE



SIDE VIEW

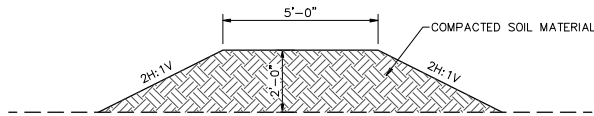


FRONT VIEW

NOTES:

1. USE STEEL OR WOOD POSTS OR AS SPECIFIED BY THE EROSION, SEDIMENTATION, AND POLLUTION CONTROL PLAN.
2. CONSTRUCTED IN ACCORDANCE WITH CHAPTER 6 BMP STANDARDS AND SPECIFICATIONS FOR GENERAL LAND DISTURBING ACTIVITIES OF GEORGIA SOIL AND WATER CONSERVATION COMMISSION.

2 DETAIL - SILT FENCE - TYPE C (Sd1-S)
11 NOT TO SCALE



NOTES:

1. COVER SOIL FROM THE EXISTING SOIL CAP MAY BE USED TO CONSTRUCT THE DIVERSION BERM.
2. DIVERSION BERMS SHALL BE IMPLEMENTED AS NECESSARY TO MANAGE STORMWATER FLOW THROUGHOUT CLOSURE CONSTRUCTION.

3 DETAIL - DIVERSION BERM (Cd-Sd1-S)
11 NOT TO SCALE



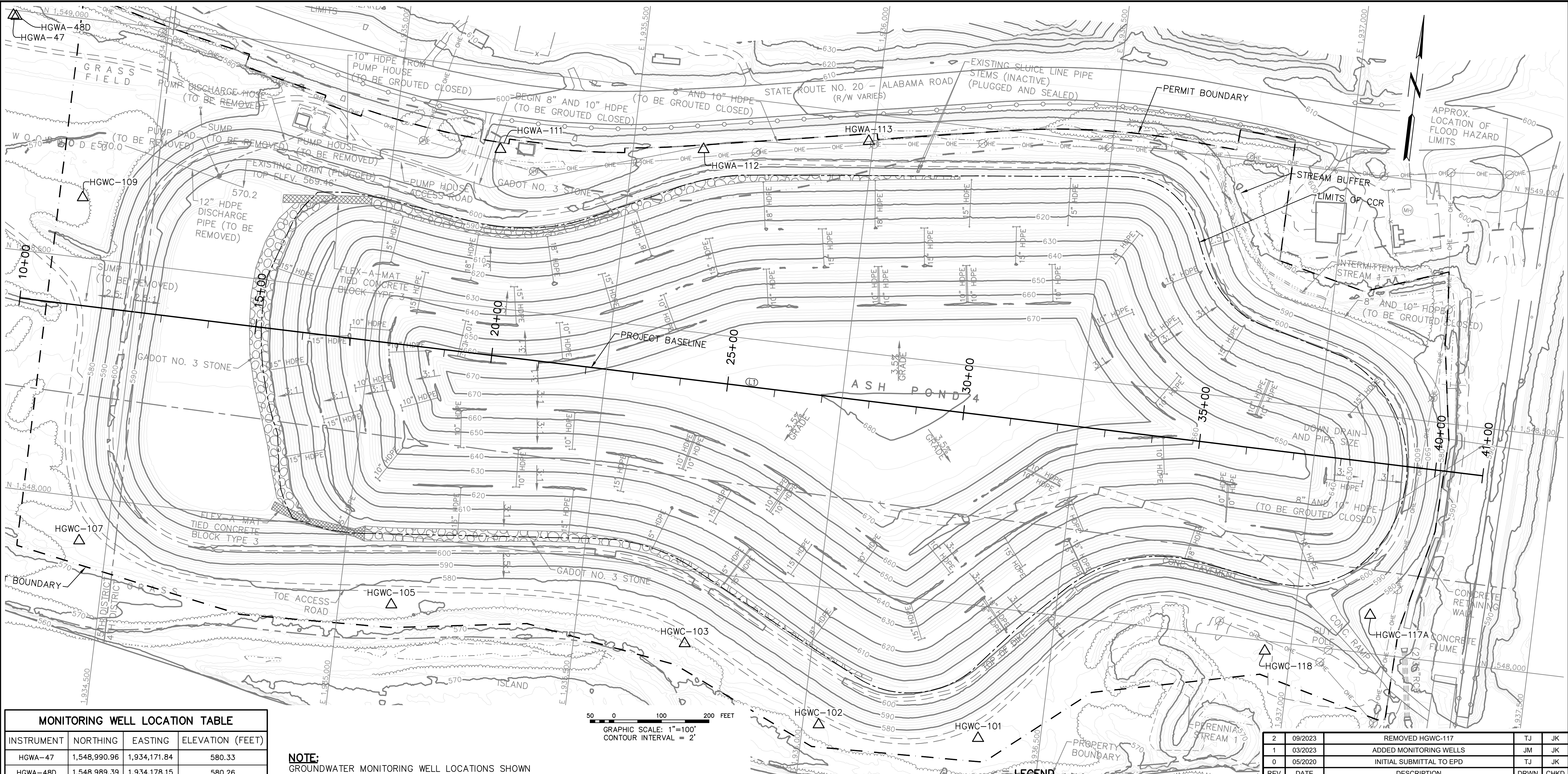
SECTION OR DETAIL NO.
SHEET WHERE SHOWN

REFERENCE KEY

DETAILS			
CLOSURE DRAWINGS			
FOR			
PLANT HAMMOND - GEORGIA POWER			
ASH POND 4 (AP-4) - DEWATERED CCR SURFACE IMPOUNDMENT			
FLOYD COUNTY, GEORGIA			
1110 Market Street, Suite 214A Chattanooga, Tennessee 37402-2863 www.stantec.com			
PROJ. NO.	175618707	DWG.	11_18707-502-071
SCALE	AS SHOWN	EDIT	04/03/20
DATE	APRIL 2020	SHEET 11 OF 12	

FILE NAME: 24-02-2020 USER: KSV, KSV, KSV PROJECT: PLANT HAMMOND - GEORGIA POWER TECHNICAL PRODUCTION DRAWING SHEET: ASH_POND_4 - AP-4 - DEWATERED CCR SURFACE IMPOUNDMENT SHEET 11 OF 12

PLOT DATE: 09/08/2023 USER: MCKINNEY, JIMMY
\\S0243-PPF501\SHARED\PROJECT\175618707\TECHNICAL PRODUCTION\DRAWING\Sheet_FILES\ASH_POND_4\PERMIT\000R_4\SUB\12_18707-US-CMN_R2.DWG



MONITORING WELL LOCATION TABLE			
INSTRUMENT	NORTHING	EASTING	ELEVATION (FEET)
HGWA-47	1,548,990.96	1,934,171.84	580.33
HGWA-48D	1,548,989.39	1,934,178.15	580.26
HGWA-111	1,548,834.26	1,935,222.81	591.75
HGWA-112	1,548,885.63	1,935,647.00	596.27
HGWA-113	1,548,944.62	1,935,990.09	594.58
HGWC-101	1,547,725.50	1,936,369.58	578.85
HGWC-102	1,547,713.50	1,936,033.33	577.54
HGWC-103	1,547,848.88	1,935,732.96	580.79
HGWC-105	1,547,855.56	1,935,110.36	582.09
HGWC-107	1,547,909.99	1,934,442.24	579.31
HGWC-109	1,548,627.41	1,934,362.77	576.77
HGWC-117A	1,548,082.04	1,937,157.25	581.76
HGWC-118	1,547,980.56	1,936,946.37	579.02


NOTE:
GROUNDWATER MONITORING WELL LOCATIONS SHOWN
ARE TAKEN FROM GROUNDWATER MONITORING PLAN
AS SHOWN IN PART "A" OF THE PERMIT
APPLICATION.



TABLE OF PROJECT BASELINE COORDINATES								
NUMBER	BEGIN STATION	NORTHING	EASTING	LENGTH	BEARING	END STATION	NORTHING	EASTING
L1	10+00.00	1,548,399.91	1,934,257.13	3100.00'	N90°00'00"E	41+00.00	1,548,399.91	1,937,357.13

MAPPING NOTE:
TOPOGRAPHIC AND PLANIMETRIC SURVEY INFORMATION FOR THE PLANS WAS
OBTAINED FROM DRAWING P317-3, REV 3 BY METRO ENGINEERING & SURVEYING
CO., INC. DATED FEBRUARY 26, 2013. ALL COORDINATES ARE BASED ON NORTH
AMERICAN DATUM 83 (NAD 83), GEORGIA STATE PLANE, WEST ZONE. ALL
ELEVATIONS ARE BASED ON THE NORTH AMERICAN VERTICAL DATUM 88 (NAVD 88).

- LEGEND**
- 500 - EXISTING INDEX CONTOUR
 - - EXISTING INTERMEDIATE CONTOUR
 - - EDGE OF WATER
 - - FLOOD HAZARD LIMIT
 - - APPROXIMATE LAND
 - - GRAVEL ROAD
 - - TREE LINE
 - X - FENCE
 - OHE - OVERHEAD ELECTRIC
 - - POWER POLE
 - - PERMIT BOUNDARY
 - - PROPERTY BOUNDARY
 - - STREAM BUFFER
 - - GUARDRAIL
 - - LIMITS OF COR
 - Δ - MONITORING WELL

2	09/2023	REMOVED HGWC-117	TJ	JK
1	03/2023	ADDED MONITORING WELLS	JM	JK
0	05/2020	INITIAL SUBMITTAL TO EPD	TJ	JK
REV	DATE	DESCRIPTION	DRWN	CHKD
COMPLIANCE MONITORING NETWORK				
CLOSURE DRAWINGS FOR PLANT HAMMOND - GEORGIA POWER AND 4 (AP-4) - DEWATERED CCR SURFACE IMPOUNDMENT FLOYD COUNTY, GEORGIA				
 ENVIRONMENTAL PROTECTION DIVISION Approved Solid Waste Management Program Approved By: Wescott P.G. 1110 Market Street, Suite 214A Donalville, Georgia, Tennessee 37402-2863 Wescott P.G. Inc. Date: 09/08/2023				
PROJ. NO.		175618707	DWG.	12_18707-105-CMN_R4
SCALE		1"=100'	SHEET 12 OF 12	
DATE		APRIL 2020	EDIT 09/2023	

NORTH ARROW & PLAT BEARINGS
BASED ON - GEORGIA STATE PLANE
KANSAS(2011) WEST

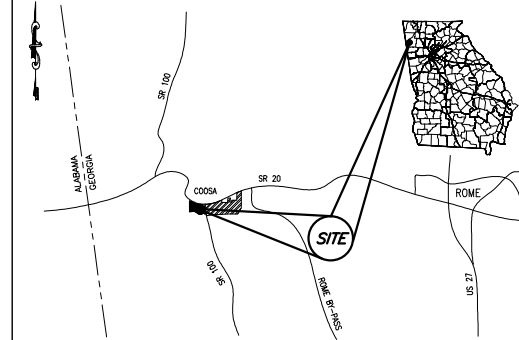
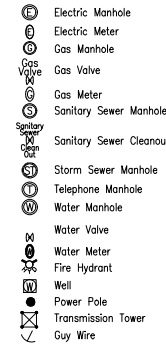
Plant Hammond Ash Pond 4 Call Table

Course	Bearing	Distance	Arc	Radius
1	S 00°28'59" W	255.78'		
2	S 76°52'45" E	188.57'		
3	N 70°08'13" E	183.42'		
4	S 03°53'13" E	152.12'	152.17'	1700.00'
5	S 09°04'15" E	203.20'		
6	S 01°40'06" W	193.52'		
7	S 13°29'19" W	220.55'		
8	S 01°37'38" W	197.15'		
9	N 75°45'23" W	281.64'		
10	S 76°53'07" W	355.91'		
11	S 50°13'05" W	270.41'		
12	S 88°16'15" W	362.90'		
13	N 65°58'37" W	334.68'		
14	N 81°25'50" W	323.97'		
15	S 81°23'08" W	286.38'		
16	S 88°04'03" W	319.17'		
17	N 79°42'41" W	491.05'		
18	N 00°03'57" E	1171.94'		
19	S 75°59'36" E	326.95'	327.12'	2919.97'
20	S 79°12'02" E	43.90'		

Plant Hammond Ash Pond 4 Call Table

Course	Bearing	Distance	Arc	Radius
21	S 12°49'20" W	27.34'		
22	S 77°10'40" E	180.45'		
23	S 12°49'20" W	16.40'		
24	S 77°23'02" E	84.33'		
25	N 11°45'36" E	16.40'		
26	S 83°23'48" E	314.34'	314.76'	1748.68'
27	N 01°26'48" E	9.84'		
28	S 89°41'57" E	69.55'	69.55'	1738.84'
29	S 00°50'42" E	9.84'		
30	N 86°17'24" E	174.80'	174.87'	1748.68'
31	N 06°34'29" W	9.84'		
32	N 81°19'49" E	127.13'	127.16'	1738.84'
33	N 79°14'08" E	404.97'		
34	S 10°45'52" E	13.12'		
35	N 79°14'08" E	277.00'		
36	N 86°25'48" E	382.93'	383.94'	1528.87'
37	S 86°22'36" E	98.45'		
38	N 03°37'24" E	42.65'		
39	S 86°23'52" E	117.75'		

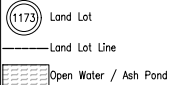
UTILITY LEGEND



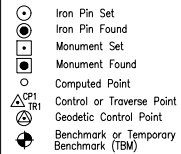
LOCATION MAP - NOT TO SCALE

PLAT ABBREVIATIONS

IPF - Iron Pin Found
IPS - Iron Pin Set
FPS - Fence Post Set
OTP - Open Top Pipe
CTP - Crimp Top Pipe
Conc. - Concrete
Alumn. - Aluminum
P/L - Property Line
R/W - Right of Way
C/L - Centerline
F/L - Fenceline
T/L - Transmission Line
N/F - Now or Formerly
DB - Deed Book
PB - Plat Book
MF - Map File No.
N.T.S. - Not to Scale
P.O.C. - Point of Commencement
P.O.B. - Point of Beginning
●BH - Geotechnical Bore Hole
UGP - Underground Power
OHU - Overhead Utilities
GPC - Georgia Power Company



MONUMENTATION LEGEND



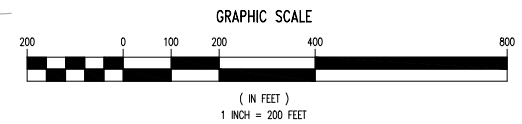
REFERENCES:

1. PLAT FOR GEORGIA POWER CO. BY LOWE ENGINEERS, LLC, GPC MF# P456-6, DATED FEBRUARY 2, 2018.
2. PERMIT BOUNDARY DEVELOPED BY STANTEC FOR GEORGIA POWER COMPANY, JULY 2018

P.O.C.
N 155°1356.38
E 1941840.87
RR IRON FD.

GEORGIA HIGHWAY 20
R/W VARIES

GEORGIA HIGHWAY 100
R/W VARIES



ASH POND 4

75.45 AC. 3,286,491 SQ.FT.



Approved
Solid Waste Management Program

Approved By: Keith Stevens

SURVEYOR: WILLIAM J. DANIEL III
P.L.S. #2257
LOWE ENGINEERS LLC
990 HAMMOND DRIVE, SUITE 900
ATLANTA, GA 30328
PHONE (770) 857-8400



I hereby certify that this survey has been prepared in conformity with the Technical Standards for Property Surveys in Georgia as set forth in Chapter 180-7 on the Rules of the Georgia Board of Registration for Professional Engineers and Land Surveyors and as set forth in the Georgia Plat Act O.C.G.A. 15-6-67.

And further certify that according to Georgia Code Section 15-6-67(d), this plat is not required to be reviewed by any local governing authorities prior to recording. Per said section, "No approval shall be required if no new streets or roads are created or no new utility improvements are required or no new sanitary sewer or approval of a septic tank is required." No such improvements are required hereon.

Date: October 4, 2018

SURVEY CLOSURE STATEMENT

The Field Data upon which this plat is based has a closure precision of one foot in 58,769 feet, and an angular error of <1" per angle point, and was adjusted using Least Squares method.

This plat has been calculated for closure and is found to be accurate within one foot in 520,157 feet.

Linear Measurement obtained using Leica TS-15 &
Angular Measurement obtained using Trimble SPS730
Field Work completed 11/29/2017

NOTE: BACKGROUND IMPROVEMENTS PER PERMIT DRAWING BY STANTEC, DATED APRIL 20, 2018

F.I.R.M. FLOOD NOTE:

THIS PROPERTY IS LOCATED IN A 100 YR. F.I.R.M. FLOODPLAIN, (BY GRAPHIC PLOTTING ONLY) ACCORDING TO F.I.R.M. FLOOD MAP OF FLOYD COUNTY, GA. COMMUNITY-PANEL NO. 13115C0163 E, 13115C0164 E & 13115C0251 E, DATED SEPTEMBER 25, 2009.

PATH - T:\Working2\Ash\Hammond\2018070089_CCR Permit Boundary Surveys - AP 1-4

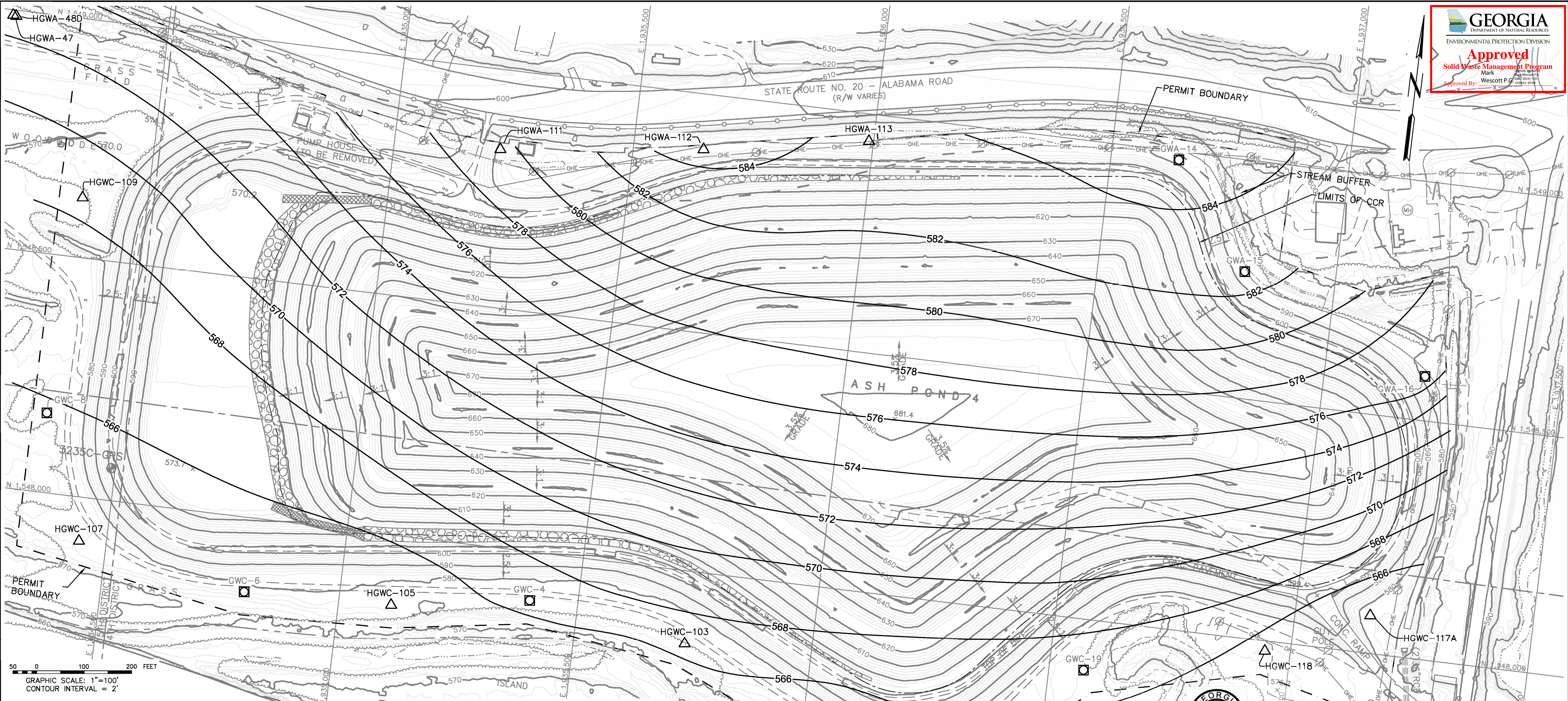
GEORGIA POWER CO., ATLANTA, GA.
Land Department

Plant Hammond
Ash Pond 4
Permitted Site Boundary

LAND LOT 181, 182, 215 & 216, 4TH DISTRICT, 4TH SECTION, FLOYD COUNTY, GEORGIA

DE	TR.	Checked
		WJD/III
SCALE	DATE	
1" = 200'	10.04.2018	
DRAWING NUMBER		

P467 (4)



MAPPING NOTE:
TOPOGRAPHIC AND PLANIMETRIC SURVEY INFORMATION FOR THE PLANS WAS OBTAINED FROM DRAWING P317-3, REV 3 BY METRO ENGINEERING & SURVEYING CO., INC. DATED FEBRUARY 26, 2013. ALL COORDINATES ARE BASED ON NORTH AMERICAN DATUM 83 (NAD 83), GEORGIA STATE PLANE, WEST ZONE. ALL ELEVATIONS ARE BASED ON THE NORTH AMERICAN VERTICAL DATUM 88 (NAVD 88).

- NOTES:**
- EXISTING DOWN DRAIN PIPES, PERIMETER DITCH LINING, AND FLUMES SHALL BE DEMOLISHED DURING CLOSURE-BY-REMOVAL CONSTRUCTION. OTHER FEATURES TO BE CLOSED OR REMOVED AS NOTED.
 - GPC IS REMOVING THE CCR MATERIAL FROM THIS UNIT. FUTURE STAGING AND LOADING AREAS WILL BE CONSTRUCTED AS PART OF THE REMOVAL PROCESS.
 - THE BASEMAP AND SITE FEATURES DEPICTED ON THIS DRAWING WERE PREPARED BY STANTEC CONSULTING SERVICES, INC. THE POTENTIOMETRIC SURFACE DEPICTED ON THIS DRAWING WAS DEVELOPED BY GEOSYNTEC CONSULTANTS, INC. THIS DRAWING HAS BEEN SEALED BY THE RESPECTIVE ENGINEER-OF-RECORD FOR EACH CONSULTANT.

4. FORMER DETECTION MONITORING WELL HGWC-117 WAS REPLACED WITH HGWC-117A. HGWC-117 WAS ABANDONED IN JULY 2023.

MONITORING WELL LOCATION TABLE			
WELL ID	NORTHING	EASTING	GROUNDWATER ELEVATION (AUGUST 2022, FEET)
HGWA-47	1,548,990.96	1,934,171.84	572.70
HGWA-48D	1,548,989.39	1,934,178.15	572.73
HGWA-111	1,548,834.26	1,935,222.81	579.63
HGWA-112	1,548,885.63	1,935,647.00	584.84
HGWA-113	1,548,944.62	1,935,990.09	583.66
HGWC-101	1,547,725.50	1,936,369.58	565.67
HGWC-102	1,547,713.50	1,936,033.33	564.45
HGWC-103	1,547,848.88	1,935,732.96	567.12
HGWC-105	1,547,855.56	1,935,110.36	564.12
HGWC-107	1,547,909.99	1,934,442.24	564.14
HGWC-109	1,548,627.41	1,934,362.77	568.09
HGWC-117A	1,548,082.04	1,937,157.25	564.99
HGWC-118	1,547,980.56	1,936,946.37	565.54

MONITORING WELL LOCATION TABLE			
WELL ID	NORTHING	EASTING	GROUNDWATER ELEVATION (AUGUST 2022, FEET)
GWA-14	1,548,982.59	1,936,642.58	584.64
GWA-15	1,548,766.17	1,936,808.47	583.33
GWA-16	1,548,592.74	1,937,210.99	577.03
GWC-4	1,547,898.30	1,935,398.70	567.22
GWC-6	1,547,843.93	1,934,800.45	564.30
GWC-8	1,548,167.13	1,934,342.94	565.86
GWC-19	1,547,892.89	1,936,572.97	566.85
MW-12	1,547,853.78	1,937,525.46	564.62

LEGEND

- 500
- EXISTING INDEX CONTOUR
- EXISTING INTERMEDIATE CONTOUR
- EDGE OF WATER
- FLOOD HAZARD LIMITS
- APPROXIMATE LAND LOT LINE
- GRAVEL ROAD
- TREE LINE
- X FENCE
- OHE OVERHEAD ELECTRIC
- POWER POLE
- PERMIT BOUNDARY
- PROPERTY BOUNDARY
- GUARDRAIL
- LIMITS OF CCR
- PIEZOMETER
- MONITORING WELL
- POTENTIOMETRIC SURFACE (AUGUST 2022)

2	09/2023	REMOVED HGWC-117	TJ	JK
1	03/2023	UPDATED GROUNDWATER ELEVATIONS	JM	JK
0	05/2020	INITIAL SUBMITTAL TO EPD	RP	JK
REV	DATE	DESCRIPTION	DRWN	CHKD

ENVIRONMENTAL MONITORING PLAN
CLOSURE DRAWINGS
FOR
PLANT HAMMOND - GEORGIA POWER
ASH POND 4 (AP-4) - DEWATERED CCR SURFACE IMPOUNDMENT
FLOYD COUNTY, GEORGIA

1110 Market Street, Suite 214A Chattanooga, Tennessee 37402-2863 www.stantec.com		Stantec	
PROJ. NO.	175618707	DWG.	18707-901-EMP2_R2
SCALE	1"=100'	EDIT	09/ 2023
DATE	MAY 2020	SHEET	1 OF 1