

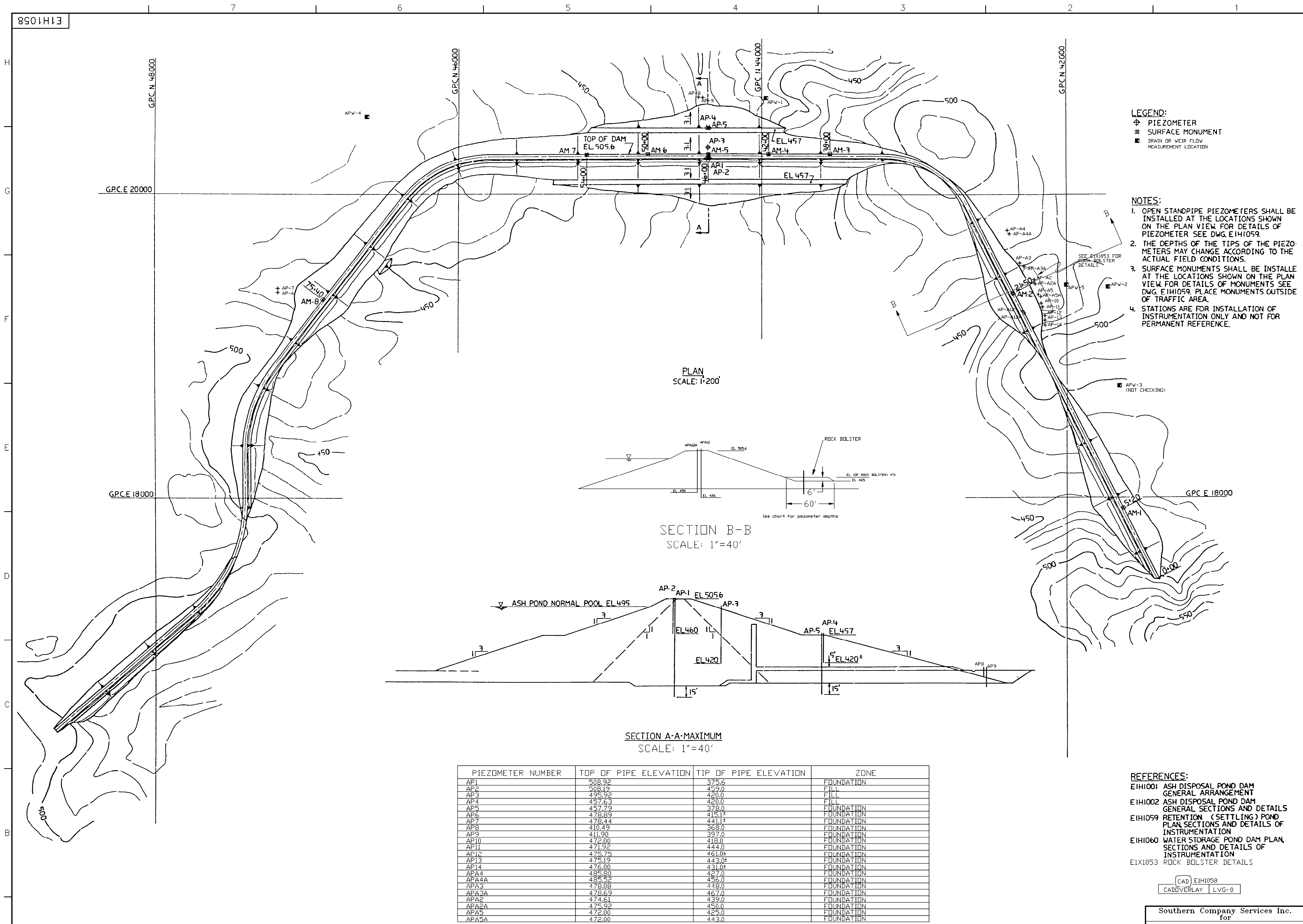
257.83 (b) (2)	REPORT OF ANNUAL INSPECTION OF CCR SURFACE IMPOUNDMENT		
	FACILITY NAME: Plant Scherer Ash Pond		
	OWNER/OPERATOR OF FACILITY: Georgia Power Company		
	INSPECTION DATE: August 27, 2015		
	INSPECTING ENGINEER: Todd L. Barber, PE (GA Reg. # PE025787)		
	Based on the results of my inspection and review of the data provided, it is my professional opinion that the report has been completed in accordance with 40 CFR 257.83(b).		
(i)	ANY CHANGES IN GEOMETRY OF THE IMPOUNDING STRUCTURE SINCE THE PREVIOUS ANNUAL INSPECTION?	N/A*	
	(IF YES, DESCRIBE):		
(ii)	LOCATION AND TYPE OF EXISTING INSTRUMENTATION	SEE ATTACHED PLAN	
(ii)	MAXIMUM RECORDED READING OF EACH INSTRUMENT SINCE PREVIOUS ANNUAL INSPECTION	N/A*	
	APPROXIMATE MINIMUM, MAXIMUM AND PRESENT DEPTH AND ELEVATION OF THE IMPOUNDED WATER SINCE PREVIOUS ANNUAL INSPECTION		
	MIN. DEPTH: N/A*	MAX. DEPTH: N/A*	PRESENT DEPTH: Up to 62.5'
	MIN. ELEVATION: N/A*	MAX. ELEVATION: N/A*	PRESENT. ELEVATION: 495.5'
(iii)	APPROXIMATE MINIMUM, MAXIMUM AND PRESENT DEPTH AND ELEVATION OF CCR SINCE PREVIOUS ANNUAL INSPECTION.		
	MIN. DEPTH: N/A*	MAX. DEPTH: N/A*	PRESENT DEPTH: Up to 87'
(iv)	MIN. ELEVATION: N/A*	MAX. ELEVATION: N/A*	PRESENT ELEVATION: 497'***
(iv)	APPROXIMATE STORAGE CAPACITY OF IMPOUNDING STRUCTURE AT TIME OF INSPECTION (yd³)	29,846,667***	
(v)	APPROXIMATE VOLUME OF IMPOUNDED WATER AND CCR AT TIME OF INSPECTION (yd³)	WATER: 14,612,845***	CCR: 15,233,822***
(vi)	ANY APPEARANCE OF AN ACTUAL OR POTENTIAL STRUCTURAL WEAKNESS OF THE CCR UNIT, IN ADDITION TO ANY EXISTING CONDITIONS THAT ARE DISRUPTING OR HAVE THE POTENTIAL TO DISRUPT THE OPERATION AND SAFETY OF THE CCR UNIT AND APPURTENANT STRUCTURES?	NO	
	(IF YES, DESCRIBE):		
(vii)	ANY OTHER CHANGE(S) WHICH MAY HAVE AFFECTED THE STABILITY OR OPERATION SINCE THE PREVIOUS ANNUAL INSPECTION?	N/A*	
	(IF YES, DESCRIBE):		

* This is the first 'Annual inspection by a qualified professional engineer' performed in accordance with 40 CFR Part 257.83. This information will be included in subsequent annual inspection reports.

** Highest elevation of CCR at approximately 515' is at several locations in south part of pond, not at location of deepest CCR

***Cubic yard estimates derived by qualified personnel from available information.





LEGEND:
 ⊕ PIEZOMETER
 ■ SURFACE MONUMENT
 ▬ DRAIN OR WEIR FLOW MEASUREMENT LOCATION

NOTES:
 1. OPEN STANDPIPE PIEZOMETERS SHALL BE INSTALLED AT THE LOCATIONS SHOWN ON THE PLAN VIEW FOR DETAILS OF PIEZOMETER SEE DWG. E1H1059.
 2. THE DEPTHS OF THE TIPS OF THE PIEZOMETERS MAY CHANGE ACCORDING TO THE ACTUAL FIELD CONDITIONS.
 3. SURFACE MONUMENTS SHALL BE INSTALLED AT THE LOCATIONS SHOWN ON THE PLAN VIEW FOR DETAILS OF MONUMENTS SEE DWG. E1H1059. PLACE MONUMENTS OUTSIDE OF TRAFFIC AREA.
 4. STATIONS ARE FOR INSTALLATION OF INSTRUMENTATION ONLY AND NOT FOR PERMANENT REFERENCE.

PLAN
SCALE: 1"=200'

SECTION B-B
SCALE: 1"=40'

SECTION A-A-MAXIMUM
SCALE: 1"=40'

PIEZOMETER NUMBER	TOP OF PIPE ELEVATION	TIP OF PIPE ELEVATION	ZONE
AP1	508.92	375.6	FOUNDATION
AP2	508.19	459.0	FILL
AP3	495.92	420.0	FILL
AP4	457.63	420.0	FILL
AP5	457.79	378.0	FOUNDATION
AP6	478.89	415.1	FOUNDATION
AP7	478.44	441.1±	FOUNDATION
AP8	410.49	368.0	FOUNDATION
AP9	411.90	397.0	FOUNDATION
AP10	472.00	418.0	FOUNDATION
AP11	471.92	444.0	FOUNDATION
AP12	475.75	461.0±	FOUNDATION
AP13	475.19	443.0±	FOUNDATION
AP14	476.00	431.0±	FOUNDATION
APA4	485.80	427.0	FOUNDATION
APA4A	485.52	456.0	FOUNDATION
APA3	478.08	448.0	FOUNDATION
APA3A	478.69	467.0	FOUNDATION
APA2	474.61	439.0	FOUNDATION
APA2A	475.92	450.0	FOUNDATION
APA5	472.00	425.0	FOUNDATION
APA5A	472.00	443.0	FOUNDATION

REFERENCES:
 E1H1001 ASH DISPOSAL POND DAM GENERAL ARRANGEMENT
 E1H1002 ASH DISPOSAL POND DAM GENERAL SECTIONS AND DETAILS
 E1H1059 RETENTION (SETTLING) POND PLAN SECTIONS AND DETAILS OF INSTRUMENTATION
 E1H1060 WATER STORAGE POND DAM PLAN SECTIONS AND DETAILS OF INSTRUMENTATION
 E1X1053 ROCK BOLSTER DETAILS

(CAD) E1H1058
 CADD/OVERLAY | LVG-0

Southern Company Services Inc.
 for
GEORGIA POWER COMPANY

PLANT SCHERER
 ASH DISPOSAL POND DAM
 PLAN, SECTIONS AND DETAILS
 OF INSTRUMENTATION

DESIGNED BEW DRAWN BJB CHECKED RDP

SCALE	LOCATION	DRAWING NUMBER	REV.
AS SHOWN	10-505	E1H1058	1

REVISION	DATE	REVISION	DATE	REVISION	DATE	REVISION	DATE	REVISION	DATE	REVISION	DATE	REVISION	DATE
										REVISION 1	DATE 4-13-95	REVISION 0	DATE 4-8-80
BY	CHK'D	APPR.1	APPR.2	APPR.3	APPR.4	APPR.5	BY	CHK'D	APPR.1	APPR.2	APPR.3	APPR.4	APPR.5