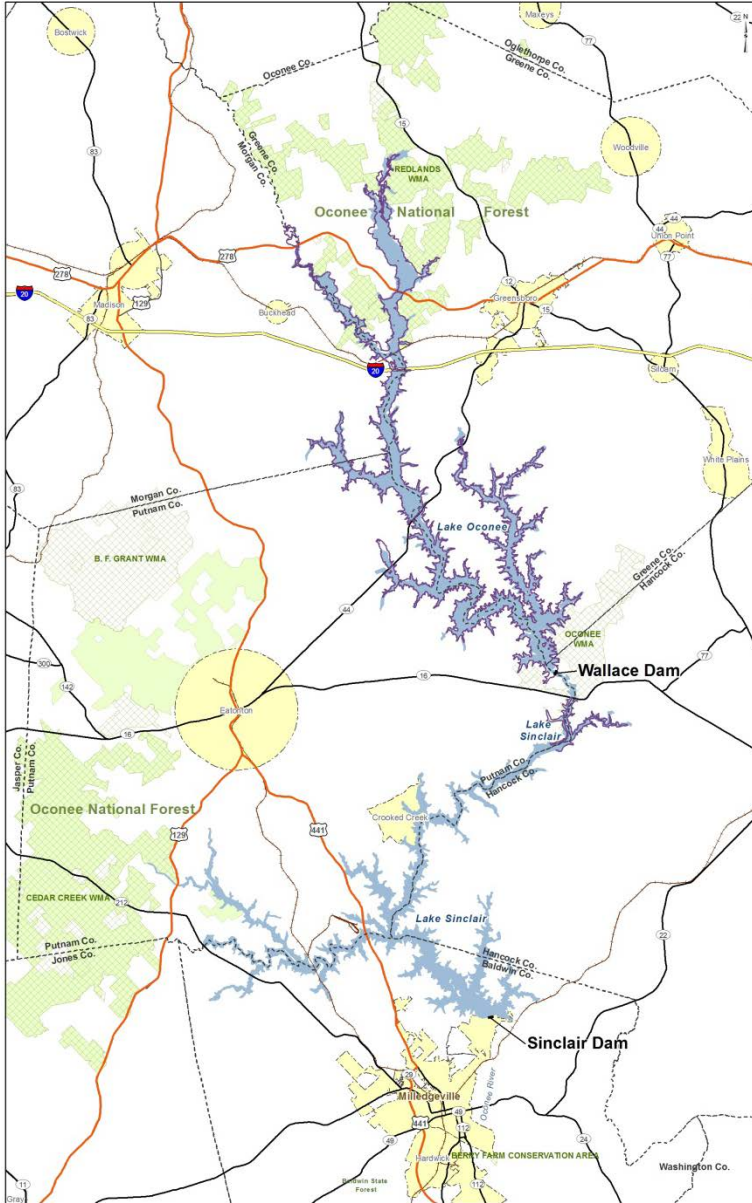


# WALLACE DAM



Lake Oconee

## RELICENSING BRIEF: PROJECT LOCATION



- The Wallace Dam Project occupies approximately 39 miles of the Oconee River. Wallace Dam is situated approximately 13 miles east of Eatonton, Putnam County, Georgia, and approximately 15 miles south of Greensboro, Greene County, Georgia.
- The project dam has an Eatonton, Georgia address. The project dam and powerhouse are located in Hancock and Putnam Counties. Lake Oconee, the project reservoir, lies in Putnam, Hancock, Morgan, and Greene Counties.
- Wallace Dam was built and filled completely by 1979.
- Wallace Dam is located at Latitude 33.35 degrees N and Longitude 83.157 degrees W.
- Wallace Dam is located at river mile 172.7 of the Oconee River. Sinclair Dam is the nearest downstream dam; it is located at river mile 143 and is also owned and operated by Georgia Power.
- Releases from Wallace Dam flow directly into Lake Sinclair.

**Bottom Line Take Away:** The Wallace Dam Project is located near Eatonton, Georgia, and occupies approximately 39 miles of the Oconee River.

**Issue Contact:** Courtenay O'Mara and Laurie Munn