

PLANT ARKWRIGHT - GEORGIA POWER AP2-DAS CLOSURE PLAN MACON-BIBB COUNTY, GEORGIA

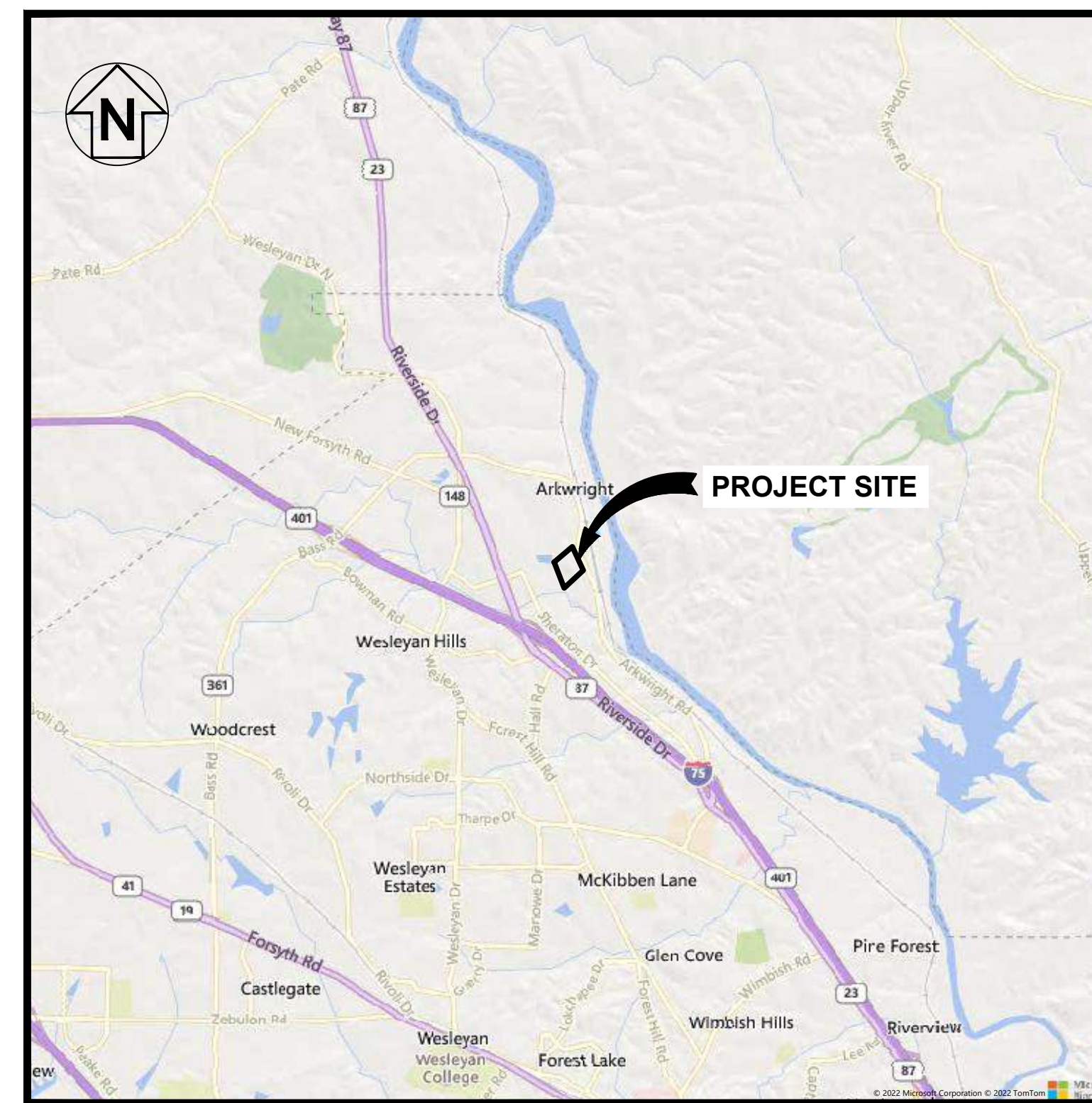
MACON-BIBB COUNTY, GEORGIA

PREPARED FOR

GEORGIA POWER



LOCATION MAP
NOT TO SCALE



SITE LOCATION MAP
SCALE: 1"=5000'

INDEX OF SHEETS

- 1 COVER SHEET
- 2 GENERAL NOTES
- 3 SITE OVERVIEW
- 4 EPSC PLAN
- 5 EXISTING CONDITIONS
- 6 BOTTOM OF CCR
- 7 FINAL GRADE
- 8 SITE MONITORING PLAN
- 9 PROFILES
- 10 CROSS SECTIONS
- 11 DETAILS
- 12 AP2-DAS PERMIT BOUNDARY

RESPONSIBLE OFFICIAL
MANAGER
GEORGIA POWER ENVIRONMENTAL AFFAIRS
241 RALPH MCGILL BLVD NE
ATLANTA, GEORGIA 30308
404-506-6505

PROPERTY OWNER
GEORGIA POWER COMPANY
241 RALPH MCGILL BLVD.
ATLANTA, GEORGIA 30308

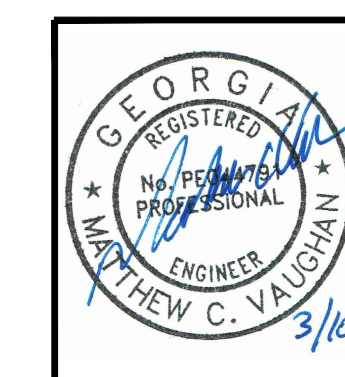
ISSUED FOR PERMIT

REV	DATE	DESCRIPTION	DRWN	CHKD
0	MAR 2026	RESPONSE TO EPD COMMENTS	TJ	RL

COVER

GEORGIA POWER - PLANT ARKWRIGHT
AP2-DAS CLOSURE PLAN

MACON-BIBB COUNTY, GEORGIA



1110 Market Street, Suite 214A
Chattanooga, Tennessee 37402-2863
www.stantec.com



PROJECT NO.	175518230	DWG.	01_175518230_001_CVR
SCALE	NO SCALE	SHEET	1
DATE	MARCH 2026		

GENERAL NOTES

ABBREVIATIONS:

A.S.T.M. AMERICAN SOCIETY OF TESTING MATERIALS
A.A.S.H.T.O. AMERICAN ASSOCIATION OF STATE HIGHWAY AND TRANSPORTATION OFFICIALS
B.C.C.M. BITUMINOUS COATED CORRUGATED METAL PIPE
BMP'S BEST MANAGEMENT PRACTICES
BOT. BOTTOM
B.O.P. BOTTOM OF PIPE
C/C CENTER TO CENTER
C.F. CUBIC FEET
C CENTERLINE
CM CENTIMETER
CL CLASS (OF PIPE)
CLR. CLEAR
CONC. CONCRETE
CONT. CONTINUOUS
C.M.P. CORRUGATED METAL PIPE
C.F.V.C. CORRUGATED POLYVINYL CHLORIDE PIPE
X-SLOPE CROSS SLOPE
C & G CURB & GUTTER
D.I. DROP INLET
DIA. DIAMETER
DT. DITCH
DR DIMENSION RATIO
DWG. DRAWING
e DISTANCE FROM P.V.I. TO V.C. @ P.V.I.
D.I.P. DUCTILE IRON PIPE
D.O.T. DEPARTMENT OF TRANSPORTATION
E.W. EACH WAY
E.O.P. EDGE OF PAVEMENT
EL. ELEVATION
F/C FACE OF CURB
F.F. FINISH FLOOR
F.E.S. FLARED END SECTION
F.B. FLAT BOTTOM DITCH
F.H. FIRE HYDRANT
FT. FEET
G.C.M.P. GALVANIZED CORRUGATED METAL PIPE
GCL GEOSYNTHETIC CLAY LAYER
GPC, GPCO GEORGIA POWER COMPANY
GR. GRADE
GRD. BRK. GRADE BREAK
G.A.B. GRADED AGGREGATE BASE
G.I. GRATE INLET
H.D.P.E. HIGH DENSITY POLYETHYLENE PIPE
H.P. HIGH POINT
I.E. INVERT ELEVATION
J.B. JUNCTION BOX
K PERMEABILITY
L.C.R.S. LEACHATE COLLECTION & RECOVERY SYSTEM
L.O.D. LIMITS OF DISTURBANCE
LB. POUND
L.F. LINEAR FEET
N.T.S. NOT TO SCALE
L.P. LOW POINT
M.H. MANHOLE
MAX. MAXIMUM
MIN. MINIMUM
O.C. ON CENTER
O.D. OUTSIDE DIAMETER
O.F.B. OUTSIDE FACE OF BUILDING
OZ. OUNCE
P.V.D. PAVED
PERF. PERFORATED
P.I. POINT OF INTERSECTION
P.I.V. POST INDICATOR VALVE
P.C. POINT OF CURVE
P.S. POINT OF SWITCH
P.S.I. POUND PER SQUARE INCH
P.T. POINT OF TANGENT
P.V.I. POINT OF VERTICAL INTERSECTION
P.V.C. POINT OF VERTICAL CURVE
P.V.T. POINT OF VERTICAL TANGENT
P.V.C. POLYVINYL CHLORIDE PIPE
P.S.I. POUNDS PER SQUARE INCH
P.S.F. POUNDS PER SQUARE FOOT
P.P. POWER POLE
R.O.W. RIGHT OF WAY
PCM PROJECT CONSTRUCTION MANAGER
PL PROPERTY LINE
R RADIUS
R.C.A.P. REINFORCED CONCRETE ARCH PIPE
R.C.P. REINFORCED CONCRETE PIPE
REF. REFERENCE
REQ'D. REQUIRED
REV. REVISION
RD. ROAD
SCH. SCHEDULE
SHLD. SHOULDER
SHT. SHEET
S.S. SIDE SLOPE
SQ. SQUARE
STD. STANDARD
T & B TOP AND BOTTOM
T/C TOP OF CURB
T.O.P. TOP OF PIPE
T/R TOP OF RAIL
TYP. TYPICAL
V.G. VALLEY GUTTER
V.C. VERTICAL CURVE
W/ WITH
W.P. WORK POINT

- PROJECT GRID IS GEORGIA STATE PLANE GRID, NAD 83, WEST ZONE.
- ALL EROSION CONTROL MEASURES SHALL BE IN CONFORMANCE WITH THE CURRENT EDITION OF THE "MANUAL FOR EROSION AND SEDIMENT CONTROL IN GEORGIA." STORMWATER CONTROLS AND BEST MANAGEMENT PRACTICES SHALL BE DESIGNED, INSTALLED, AND MAINTAINED IN ACCORDANCE WITH THE APPLICABLE NPDES CONSTRUCTION STORMWATER DISCHARGE GENERAL PERMIT AND/OR THE FACILITY'S NPDES INDUSTRIAL WASTEWATER DISCHARGE INDIVIDUAL PERMIT.
- STORMWATER DISCHARGES ASSOCIATED WITH ASH POND CLOSURE ACTIVITIES WILL BE COVERED UNDER THE INDUSTRIAL STORMWATER DISCHARGE GENERAL PERMIT AND/OR THE FACILITY'S NPDES INDUSTRIAL WASTEWATER DISCHARGE INDIVIDUAL PERMIT.
- STATE WATERS BUFFERS SHALL REMAIN UNDISTURBED, EXCEPT WHERE ENCROACHMENT IS REQUIRED TO FACILITATE ASH POND CLOSURE ACTIVITIES. UNLESS OTHERWISE EXEMPTED BY THE APPROPRIATE NPDES CONSTRUCTION STORMWATER DISCHARGE GENERAL PERMIT, A STATE WATERS BUFFER VARIANCE SHALL BE OBTAINED FROM GEORGIA EPD'S SOLID WASTE MANAGEMENT BRANCH PRIOR TO BUFFER ENCROACHMENT. GEORGIA EPD'S SOLID WASTE MANAGEMENT BRANCH SHALL BE NOTIFIED WHEN GPC ENVIRONMENTAL AFFAIRS APPLIES FOR A STATE WATERS BUFFER VARIANCE. CONTACT GPC ENVIRONMENTAL AFFAIRS FOR ASSISTANCE.
- PRIOR TO COMMENCING CONSTRUCTION ACTIVITIES FOR THIS PROJECT, THE PERMITTED BOUNDARY, THE LIMITS OF DISTURBANCE, AND ALL WETLANDS AND STATE WATERS BUFFERS WITHIN 200 FEET OF THE LIMITS OF DISTURBANCE OR WITHIN THE PROPERTY BOUNDARY (WHICHEVER IS CLOSER) SHALL BE CLEARLY FLAGGED AND STAKED. THESE MARKINGS SHALL BE MAINTAINED UNTIL COMPLETION OF CONSTRUCTION / CLOSURE ACTIVITIES. SHOULD ANY OF THE MARKINGS BE DISTURBED, THE CONTRACTOR SHALL NOTIFY GEORGIA POWER COMPANY IMMEDIATELY. ALL CONSTRUCTION PERSONNEL SHALL BE SHOWN THE LOCATION OF THE LIMITS OF DISTURBANCE, STATE WATERS BUFFERS, STATE WATERS, AND WETLANDS OUTSIDE THE LIMITS OF DISTURBANCE TO PREVENT HEAVY EQUIPMENT ENCROACHMENT INTO THESE AREAS.
- THE GRADE CONTOURS SHOWN IN THE ASH POND, AGGREGATE ROADS, AND EXTERIOR SLOPES ARE FINAL GRADE ELEVATIONS. APPROPRIATE SOIL, CLAY, ROCK, ETC. THICKNESSES SHALL BE APPLIED TO CALCULATE SUBGRADE ELEVATIONS.
- GPC SHALL PROVIDE DESIGNATED ACCESS ROUTE / DIRECTIONS ACROSS THE PLANT PROPERTY.
- EXISTING ACCESS AND PLANT ROADS SHALL BE MAINTAINED AND REPAIRED AS NECESSARY DURING CONSTRUCTION.
- ALL SURFACE WATER RUNOFF CONTROL, PROVISIONS FOR DRAINAGE FOR EXCAVATIONS, AND FOR THE PLACEMENT OF MATERIALS SHALL BE PLANNED AND OPERATED BASED ON CONSTRUCTION NEEDS.
- ALL WORK SHALL BE IN COMPLIANCE WITH CURRENT OCCUPATIONAL SAFETY AND HEALTH ADMINISTRATION REGULATIONS. ALL SHORING / CRIBBING NECESSARY FOR DEEP EXCAVATIONS REQUIRE AN ENGINEER'S DESIGN.
- STAGING AREAS AND EQUIPMENT MAINTENANCE AREAS SHALL BE LOCATED AT LEAST 200 FEET FROM STREAM BANKS TO MINIMIZE THE POTENTIAL FOR WASH WATER, PETROLEUM PRODUCTS, OR OTHER CONTAMINANTS FROM CONSTRUCTION EQUIPMENT ENTERING THE STREAMS.
- CONSTRUCTION DEBRIS, FLOWABLE FILL, OLD SUPPORT MATERIALS OR OTHER REFUSE SHALL NOT BE PLACED IN STREAMS OR IN AREAS WHERE MIGRATION INTO STREAMS AND / OR WETLANDS COULD REASONABLY BE EXPECTED.
- THE CLEAN-UP OF ALL ON-SITE DITCHES, PIPES, MANHOLES, INLETS, ETC. THAT RECEIVE STORMWATER RUNOFF FROM SITE CONSTRUCTION ACTIVITIES SHALL BE PERFORMED.
- THE CCR REMOVAL STRATEGY IS INCLUDED IN THE CLOSURE PLAN.

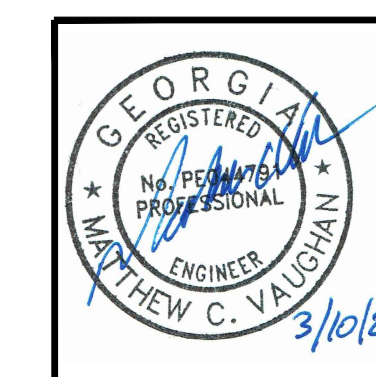
ISSUED FOR PERMIT

REV	DATE	DESCRIPTION	DRWN	CHKD
0	MAR 2026	ISSUED FOR SUBMITTAL TO EPD	TJ	RL

GENERAL NOTES

GEORGIA POWER - PLANT ARKWRIGHT
AP2-DAS CLOSURE PLAN

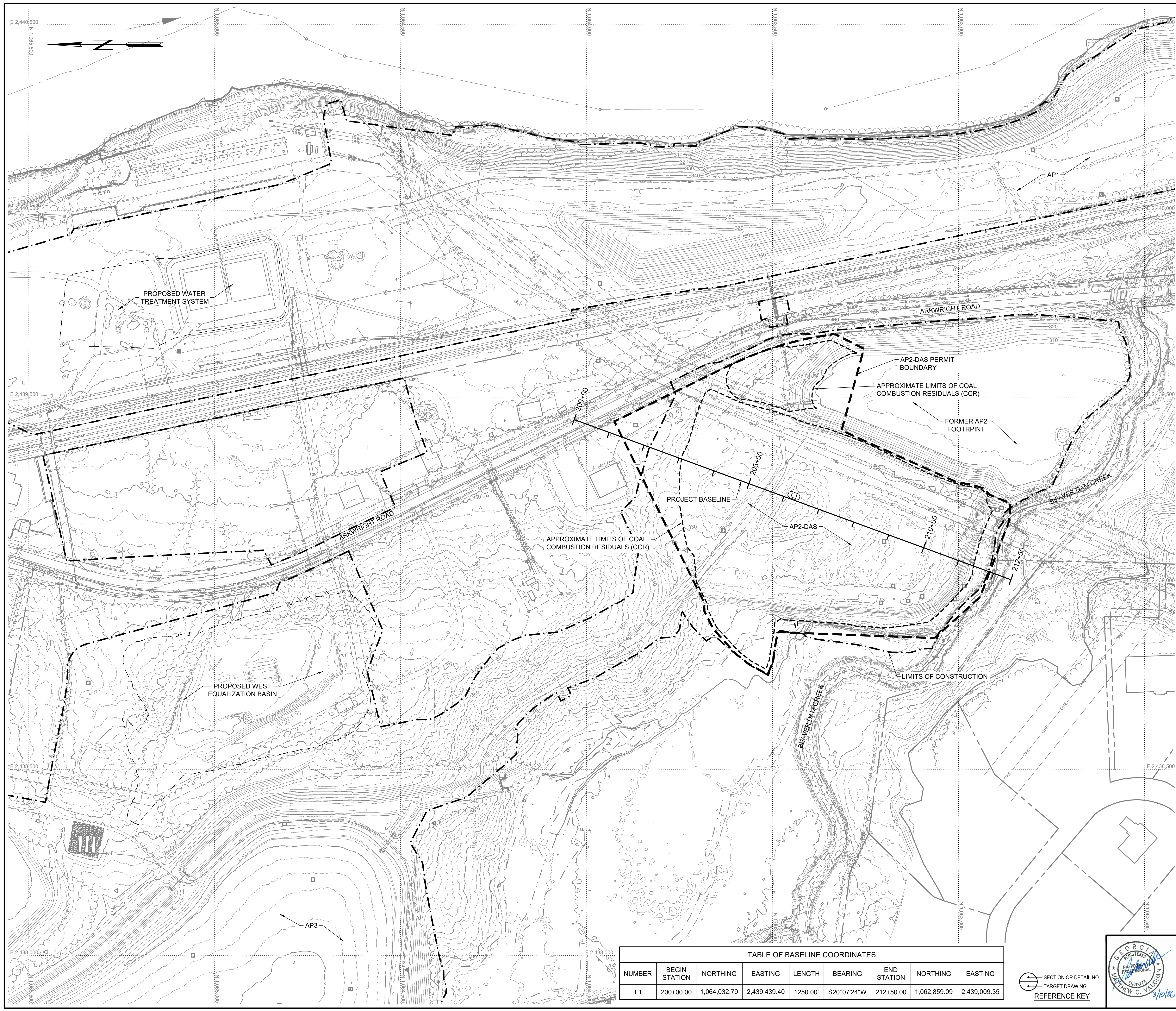
MACON-BIBB COUNTY, GEORGIA



1110 Market Street, Suite 214A
 Chattanooga, Tennessee 37402-2863
 www.stantec.com



PROJECT NO.	175518230	DWG.	02_175518230_002_GNTS
SCALE	NO SCALE	SHEET	2
DATE	MARCH 2026		



MAPPING SOURCE NOTES:
 1. TOPOGRAPHIC INFORMATION WAS OBTAINED FROM A LIDAR SURVEY PERFORMED ON FEBRUARY 3, 2023 AND PROVIDED BY GEORGIA POWER COMPANY. PLANIMETRIC INFORMATION WAS PROVIDED BY GEORGIA POWER COMPANY AND DATED MAY 4, 2018.
 2. ALL COORDINATES ARE BASED ON NORTH AMERICAN DATUM 83 (NAD 83), GEORGIA STATE PLANE, WEST ZONE. ALL ELEVATIONS ARE BASED ON THE NORTH AMERICAN VERTICAL DATUM 88 (NAVD 88).

LEGEND

500	EXISTING INDEX CONTOUR
---	EXISTING INTERMEDIATE CONTOUR
E	ELECTRIC LINE
FO	FIBER OPTIC LINE
OHE	ELECTRIC
G	GAS
---	TREELINE
---	WETLAND
---	WETLAND BUFFER
ST	STORM SEWER
---	RIVER EDGE
---	RIVER CENTERLINE
---	DITCH
X	FENCE
---	GUARDRAIL
---	RAILROAD
○	TREE/SHRUB
+	SIGN
●	POWER POLE
○	LIGHT POLE
○	MANHOLE
---	HEADWALL
---	DROP INLET
+	GUY WIRE ANCHOR
□	MISC. UNKNOWN
○	MISC. UNKNOWN
---	AP2-DAS PERMIT BOUNDARY
---	LIMITS OF CCR
---	BASELINE
---	LIMITS OF CONSTRUCTION

ISSUED FOR PERMIT

GRAPHIC SCALE: 1" = 100'
 CONTOUR INTERVAL 2 FEET

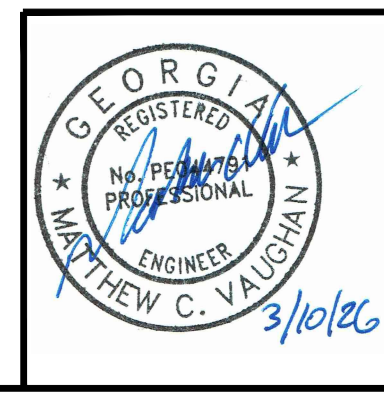
0	MAR 2026	ISSUED FOR SUBMITTAL TO EPD	TJ	RL
REV	DATE	DESCRIPTION	DRWN	CHKD

OVERVIEW PLAN
 GEORGIA POWER - PLANT ARKWRIGHT
 AP2-DAS CLOSURE PLAN
 MACON-BIBB COUNTY, GEORGIA

TABLE OF BASELINE COORDINATES

NUMBER	BEGIN STATION	NORTHING	EASTING	LENGTH	BEARING	END STATION	NORTHING	EASTING
L1	200+00.00	1,064,032.79	2,439,439.40	1250.00'	S20°07'24"W	212+50.00	1,062,859.09	2,439,009.35

SECTION OR DETAIL NO.
 TARGET DRAWING
 REFERENCE KEY

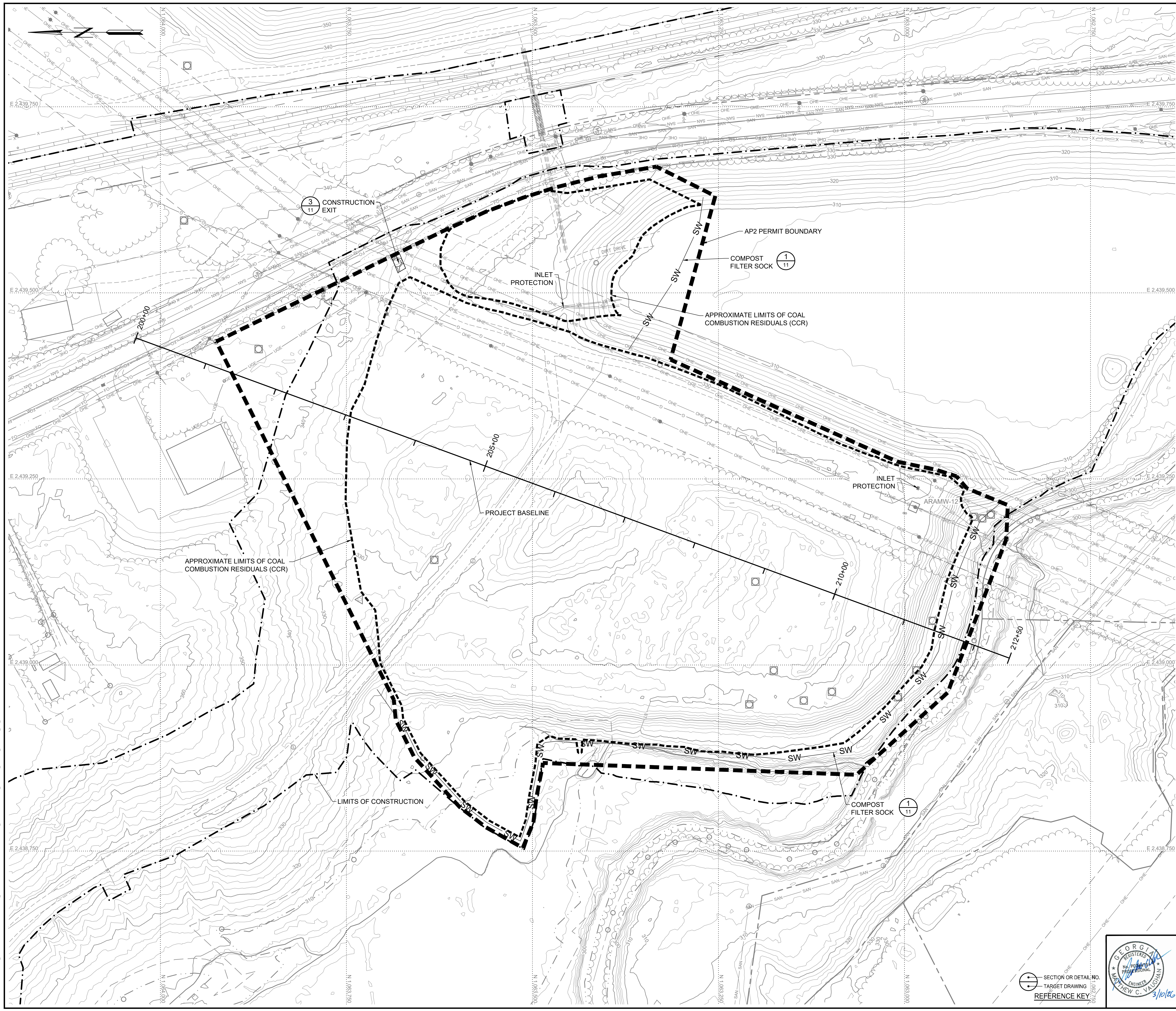


1110 Market Street, Suite 214A
 Chattanooga, Tennessee 37402-2863
 www.stantec.com

Stantec

PROJECT NO.	175518230	DWG.	03_175518230_101_OVR
SCALE	1" = 100'	SHEET	3
DATE	MARCH 2026		

PLOT DATE: 3/10/2026 2:48 PM USER: JONES, CHRIS (LEANNON)
 US2622APR2517ISSUED_PRODICTYB175518230_TCHNICAL_PRODUCION\DRAWING\AP2CLOSURE_PLAN\PERMIT\REV_1\PSHIRT_TLEB3L_175518230_101_OVR.DWG



MAPPING SOURCE NOTES:

1. TOPOGRAPHIC INFORMATION WAS OBTAINED FROM A LIDAR SURVEY PERFORMED ON FEBRUARY 3, 2023 AND PROVIDED BY GEORGIA POWER COMPANY. PLANIMETRIC INFORMATION WAS PROVIDED BY GEORGIA POWER COMPANY AND DATED MAY 4, 2018.
2. ALL COORDINATES ARE BASED ON NORTH AMERICAN DATUM 83 (NAD 83), GEORGIA STATE PLANE, WEST ZONE. ALL ELEVATIONS ARE BASED ON THE NORTH AMERICAN VERTICAL DATUM 88 (NAVD 88).

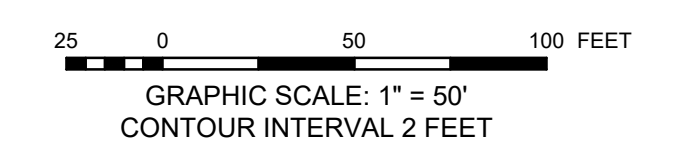
LEGEND

500	EXISTING INDEX CONTOUR
---	EXISTING INTERMEDIATE CONTOUR
E	ELECTRIC LINE
FO	FIBER OPTIC LINE
OHE	ELECTRIC
G	GAS
~	TREELINE
~	WETLAND
~	WETLAND BUFFER
ST	STORM SEWER
---	RIVER EDGE
---	RIVER CENTERLINE
---	DITCH
X	FENCE
---	GUARDRAIL
---	RAILROAD
○	TREE/SHRUB
+	SIGN
●	POWER POLE
★	LIGHT POLE
⊙	MANHOLE
⊔	HEADWALL
⊕	DROP INLET
+	GUY WIRE ANCHOR
+	MISC. UNKNOWN
○	MISC. UNKNOWN
---	AP2 PERMIT BOUNDARY
---	LIMITS OF CCR
---	BASELINE
---	LIMITS OF CONSTRUCTION

NOTE:

1. ADDITIONAL EROSION CONTROL MEASURES MAY BE REQUIRED BASED ON SITE CONDITIONS OR AS DIRECTED BY OWNER, ENGINEER, OR REGULATORY AUTHORITY.
2. INLET PROTECTION SHALL FOLLOW THE REQUIREMENTS OF THE GEORGIA EROSION CONTROL HANDBOOK.

ISSUED FOR PERMIT

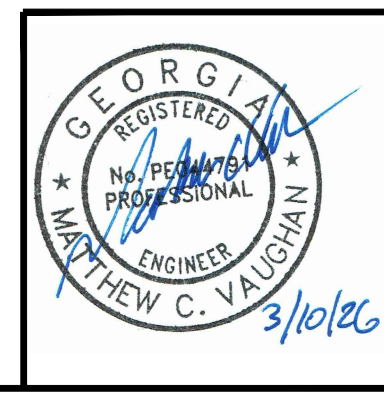


0	MAR 2026	ISSUED FOR SUBMITTAL TO EPD	TJ	RL
REV	DATE	DESCRIPTION	DRWN	CHKD

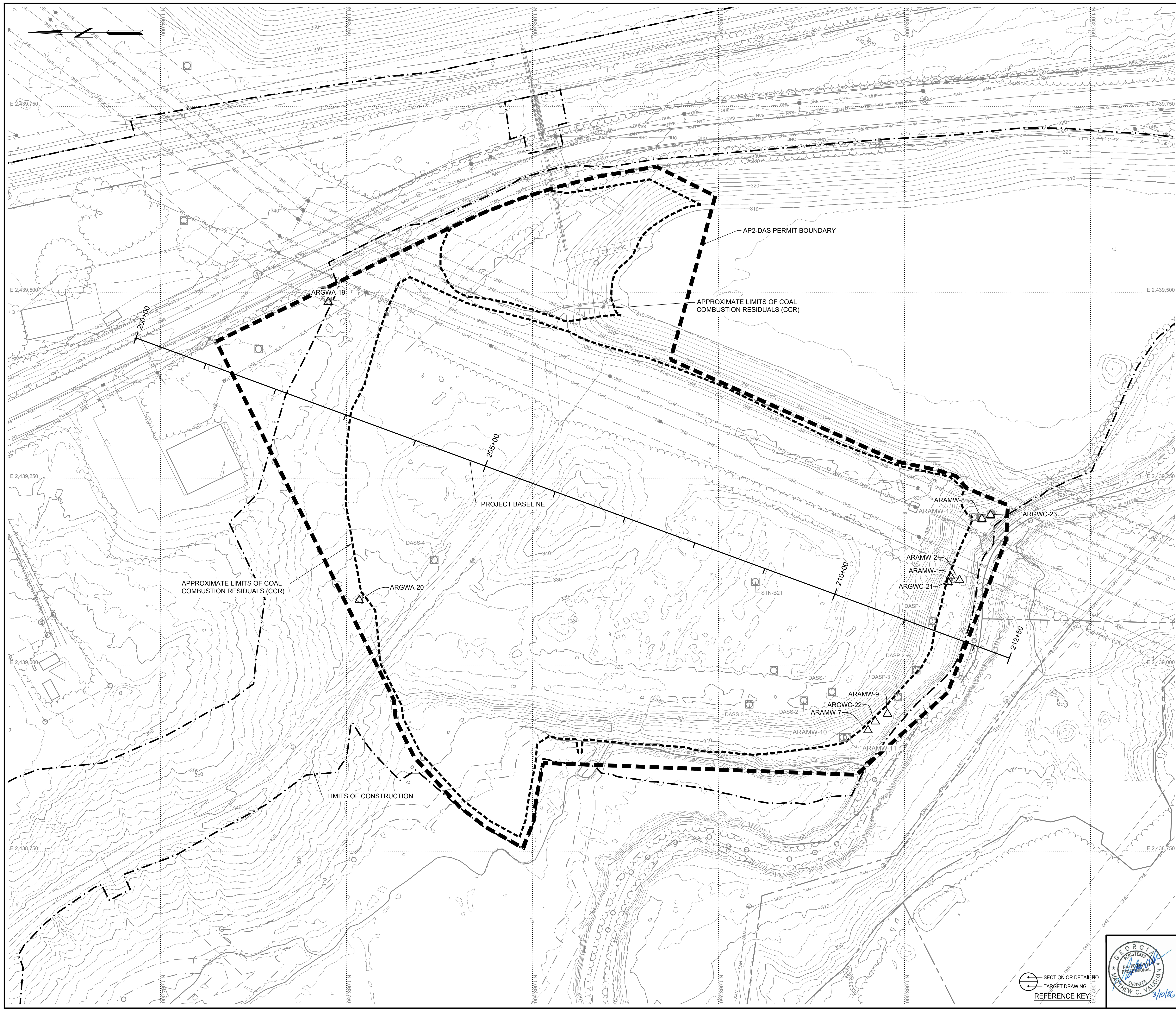
EPSC PLAN
**GEORGIA POWER - PLANT ARKWRIGHT
 AP2-DAS CLOSURE PLAN**
 MACON-BIBB COUNTY, GEORGIA

1110 Market Street, Suite 214A Chattanooga, Tennessee 37402-2863 www.stantec.com			
PROJECT NO.	175518230	DWG	04_175518230_102_EPSC
SCALE	1" = 50'	SHEET	4
DATE	MARCH 2026		

SECTION OR DETAIL NO.
 TARGET DRAWING
 REFERENCE KEY



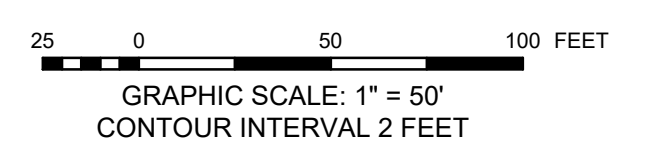
PLOT DATE: 3/9/2026 14:27 PM USER: PERRY, RICHARD
 US2622APR25ISSHARED_PROJECT\7518230\TECHNICAL_PRODUCTION\DRAWING\AP2CLOSURE_PLAN\PERMIT\REV_1\175518230_102_EPSC.DWG



MAPPING SOURCE NOTES:
 1. TOPOGRAPHIC INFORMATION WAS OBTAINED FROM A LIDAR SURVEY PERFORMED ON FEBRUARY 3, 2023 AND PROVIDED BY GEORGIA POWER COMPANY. PLANIMETRIC INFORMATION WAS PROVIDED BY GEORGIA POWER COMPANY AND DATED MAY 4, 2018.
 2. ALL COORDINATES ARE BASED ON NORTH AMERICAN DATUM 83 (NAD 83), GEORGIA STATE PLANE, WEST ZONE. ALL ELEVATIONS ARE BASED ON THE NORTH AMERICAN VERTICAL DATUM 88 (NAVD 88).

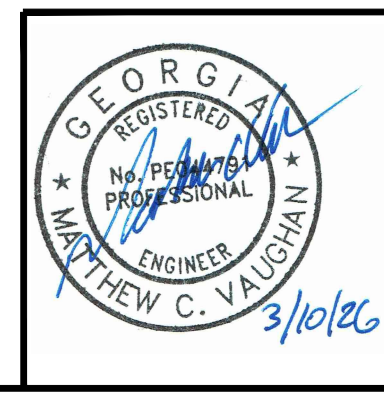
- LEGEND**
- 500 EXISTING INDEX CONTOUR
 - EXISTING INTERMEDIATE CONTOUR
 - E ELECTRIC LINE
 - FO FIBER OPTIC LINE
 - OHE ELECTRIC
 - G GAS
 - TREELINE
 - WETLAND
 - WETLAND BUFFER
 - ST STORM SEWER
 - RIVER EDGE
 - RIVER CENTERLINE
 - DITCH
 - X FENCE
 - GUARDRAIL
 - RAILROAD
 - ◇ TREE/SHRUB
 - ◇ SIGN
 - ◇ POWER POLE
 - ◇ LIGHT POLE
 - ◇ MANHOLE
 - ◇ HEADWALL
 - ◇ DROP INLET
 - ◇ GUY WIRE ANCHOR
 - ◇ MISC. UNKNOWN
 - ◇ MISC. UNKNOWN
 - ◇ PIEZOMETER
 - AP2-DAS PERMIT BOUNDARY
 - LIMITS OF CCR
 - BASELINE
 - △ EXISTING MONITORING WELL
 - LIMITS OF CONSTRUCTION

ISSUED FOR PERMIT



REV	DATE	DESCRIPTION	DRWN	CHKD
0	MAR 2026	ISSUED FOR SUBMITTAL TO EPD	TJ	RL

EXISTING CONDITIONS
GEORGIA POWER - PLANT ARKWRIGHT
AP2-DAS CLOSURE PLAN
 MACON-BIBB COUNTY, GEORGIA



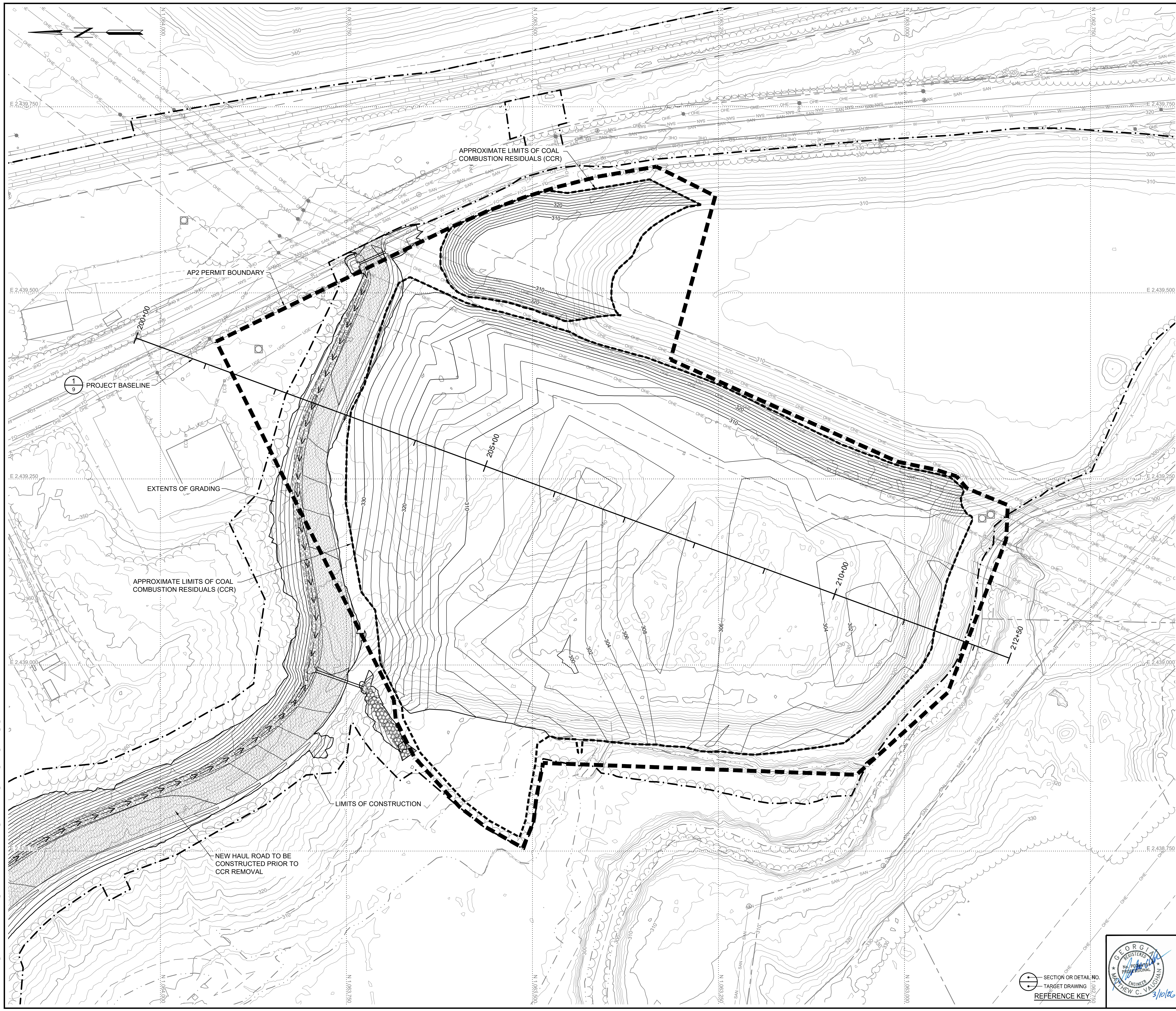
1110 Market Street, Suite 214A
 Chattanooga, Tennessee 37402-2863
 www.stantec.com

Stantec

PROJECT NO.	175518230	DWG	05_175518230_103_EXCD
SCALE	1" = 50'	SHEET	5
DATE	MARCH 2026		

PLOT DATE: 3/9/2026 1:48 PM USER: PERRY, RICHARD
 I:\2026\AP2-DAS\ISSUED_FOR_PERMIT\TECHNICAL_PRODUCTION\DRAWING\AP2-DAS_CLOSURE_PLAN\PERMIT_REV_1\PSHRIET_TL518230_103_EXCD.DWG

SECTION OR DETAIL NO.
 TARGET DRAWING
 REFERENCE KEY



MAPPING SOURCE NOTES:

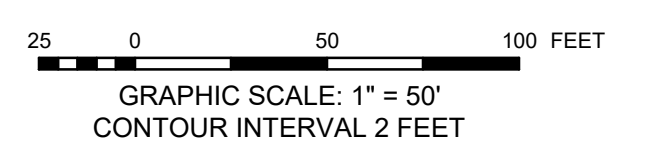
1. TOPOGRAPHIC INFORMATION WAS OBTAINED FROM A LIDAR SURVEY PERFORMED ON FEBRUARY 3, 2023 AND PROVIDED BY GEORGIA POWER COMPANY. PLANIMETRIC INFORMATION WAS PROVIDED BY GEORGIA POWER COMPANY AND DATED MAY 4, 2018.
2. ALL COORDINATES ARE BASED ON NORTH AMERICAN DATUM 83 (NAD 83), GEORGIA STATE PLANE, WEST ZONE. ALL ELEVATIONS ARE BASED ON THE NORTH AMERICAN VERTICAL DATUM 88 (NAVD 88).

LEGEND

500	EXISTING INDEX CONTOUR
- - -	EXISTING INTERMEDIATE CONTOUR
E	ELECTRIC LINE
FO	FIBER OPTIC LINE
—	ELECTRIC
G	GAS
—	TREELINE
—	WETLAND
—	WETLAND BUFFER
—	STORM SEWER
—	RIVER EDGE
—	RIVER CENTERLINE
—	DITCH
X	FENCE
—	GUARDRAIL
—	RAILROAD
○	TREE/SHRUB
◇	SIGN
●	POWER POLE
●	LIGHT POLE
⊙	MANHOLE
—	HEADWALL
—	DROP INLET
+	GUY WIRE ANCHOR
+	MISC. UNKNOWN
+	MISC. UNKNOWN
—	AP2-DAS PERMIT BOUNDARY
—	LIMITS OF CCR
—	BASELINE
500	PROPOSED INDEX CONTOUR
- - -	PROPOSED INTERMEDIATE CONTOUR
—	LIMITS OF CONSTRUCTION

- NOTES:**
1. STORMWATER CONTROLS SHALL BE DESIGNED, INSTALLED, AND MAINTAINED BASED ON FIELD CONDITIONS DURING CONSTRUCTION. STORMWATER CONTROLS SHALL BE IN ACCORDANCE WITH THE GEORGIA MANUAL OF EROSION AND SEDIMENT CONTROL, THE APPLICABLE NPDES CONSTRUCTION STORMWATER GENERAL PERMIT, AND THE NPDES INDUSTRIAL STORMWATER GENERAL PERMIT.
 2. THE BOTTOM OF CCR CONTOURS SHOWN ARE BASED ON TOPOGRAPHIC INFORMATION PRIOR TO CONSTRUCTION OF AP2-DAS AND RESULTS OF GEOTECHNICAL INVESTIGATION. LIMITS OF CCR ARE SUBJECT TO CHANGE BASED ON CONDITIONS ENCOUNTERED IN THE FIELD.
 3. THE SURFACE SHOWN IS THE CCR/SOIL INTERFACE DESCRIBED IN THE CCR REMOVAL VERIFICATION PROTOCOL IN THE COA PLAN. AN ADDITIONAL 6 INCHES OF SOIL SHALL BE EXCAVATED ONCE THE CCR/SOIL INTERFACE IS REACHED FOLLOWING THE CCR REMOVAL VERIFICATION PROCEDURES.
 4. THE CCR REMOVAL SEQUENCING AND STRATEGY IS DESCRIBED IN THE WRITTEN CLOSURE PLAN.

ISSUED FOR PERMIT



0	MAR 2026	ISSUED FOR SUBMITTAL TO EPD	TJ	RL
REV	DATE	DESCRIPTION	DRWN	CHKD

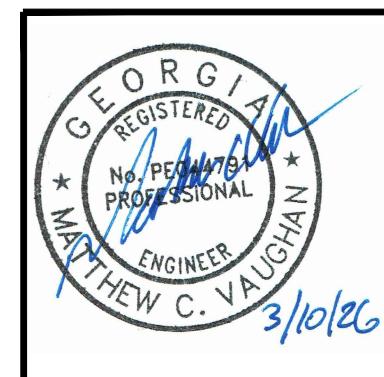
BOTTOM OF CCR
**GEORGIA POWER - PLANT ARKWRIGHT
 AP2-DAS CLOSURE PLAN**
 MACON-BIBB COUNTY, GEORGIA

1110 Market Street, Suite 214A
 Chattanooga, Tennessee 37402-2863
 www.stantec.com

Stantec

PROJECT NO. 175518230 DWG 06_175518230_104_BCCR
 SCALE 1" = 50'
 DATE MARCH 2026 SHEET 6

SECTION OR DETAIL NO.
 TARGET DRAWING
 REFERENCE KEY



PLOT DATE: 3/9/2026 1:48 PM USER: PERRY, RICHARD
 I:\2026\AP2-DAS\ISSUED_FOR_PERMIT\PROJECT\175518230\TECHNICAL\PRODUCTION\DRAWING\AP2-DAS_CLOSURE_PLAN\ISSUED_FOR_PERMIT.dwg

MAPPING SOURCE NOTES:

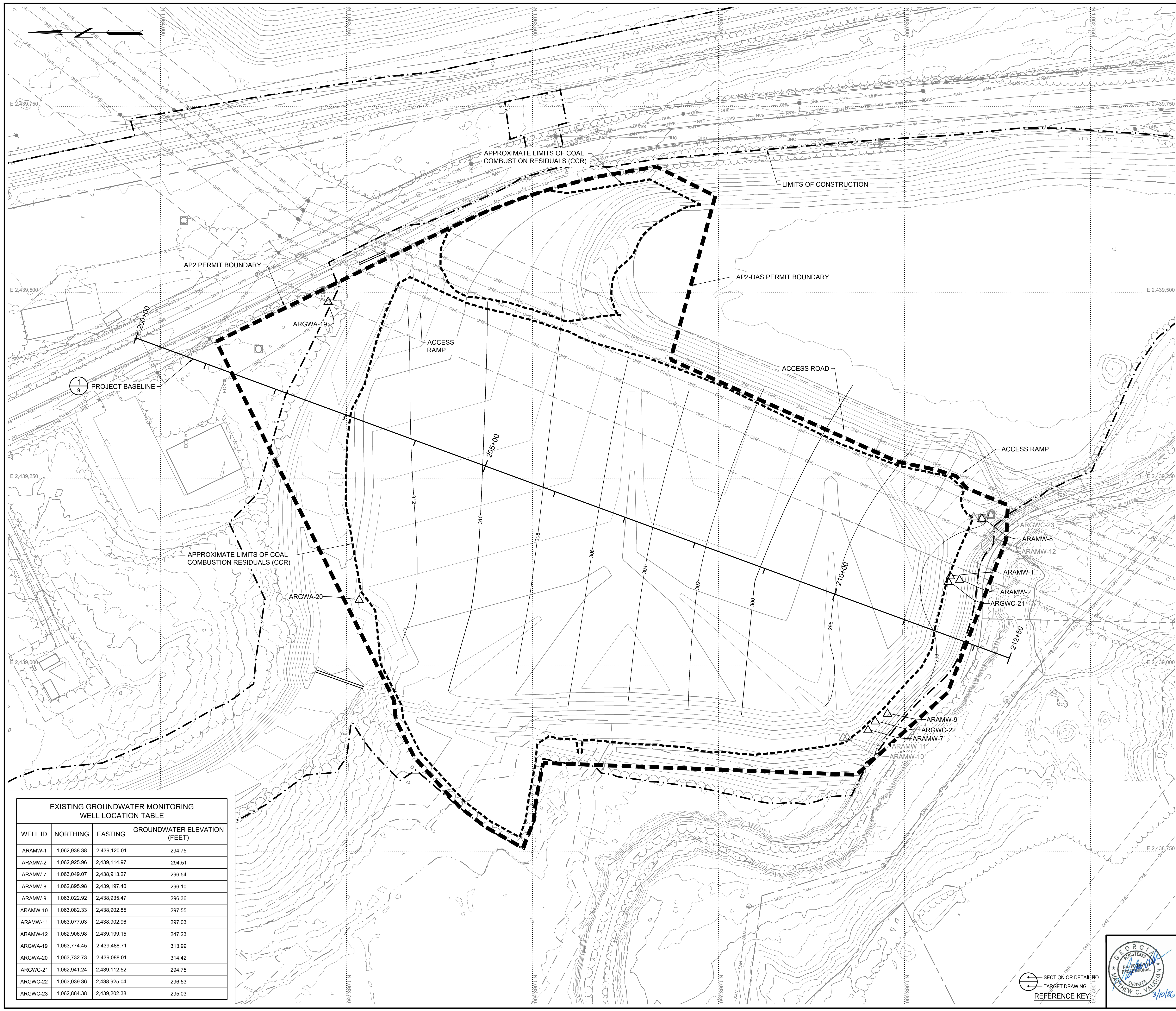
1. TOPOGRAPHIC INFORMATION WAS OBTAINED FROM A LIDAR SURVEY PERFORMED ON FEBRUARY 3, 2023 AND PROVIDED BY GEORGIA POWER COMPANY. PLANIMETRIC INFORMATION WAS PROVIDED BY GEORGIA POWER COMPANY AND DATED MAY 4, 2018.
2. ALL COORDINATES ARE BASED ON NORTH AMERICAN DATUM 83 (NAD 83), GEORGIA STATE PLANE, WEST ZONE. ALL ELEVATIONS ARE BASED ON THE NORTH AMERICAN VERTICAL DATUM 88 (NAVD 88).

LEGEND

	EXISTING INDEX CONTOUR
	EXISTING INTERMEDIATE CONTOUR
	ELECTRIC LINE
	FIBER OPTIC LINE
	ELECTRIC
	GAS
	TREELINE
	WETLAND
	WETLAND BUFFER
	STORM SEWER
	RIVER EDGE
	RIVER CENTERLINE
	DITCH
	FENCE
	GUARDRAIL
	RAILROAD
	TREE/SHRUB
	SIGN
	POWER POLE
	LIGHT POLE
	MANHOLE
	HEADWALL
	DROP INLET
	GUY WIRE ANCHOR
	MISC. UNKNOWN
	MISC. UNKNOWN
	PIEZOMETER
	AP2-DAS PERMIT BOUNDARY
	LIMITS OF CCR
	BASELINE
	POTENTIOMETRIC INDEX CONTOUR
	POTENTIOMETRIC INTERMEDIATE CONTOUR
	EXISTING MONITORING WELL
	LIMITS OF CONSTRUCTION

NOTES:

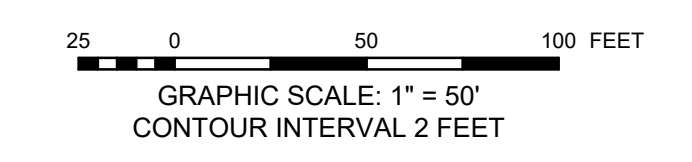
1. EXISTING CONTOURS SHOWN REPRESENT ANTICIPATED CONDITIONS AFTER FINAL GRADING HAS BEEN COMPLETED.
2. POTENTIOMETRIC CONTOURS BASED ON WATER LEVEL MEASUREMENTS TAKEN ON FEBRUARY 3, 2025.
3. EXISTING WELLS WILL BE PROTECTED DURING CCR REMOVAL ACTIVITIES. SHOULD CCR REMOVAL ACTIVITIES REQUIRE REMOVAL OF AN EXISTING WELL, EPD WILL BE NOTIFIED AND A REPLACEMENT WELL WILL BE INSTALLED FOLLOWING CCR REMOVAL. INSTALLATION OF ANY NEEDED REPLACEMENT WELLS WILL COMMENCE FOLLOWING COMPLETION OF SITE RESTORATION ACTIVITIES.



EXISTING GROUNDWATER MONITORING WELL LOCATION TABLE

WELL ID	NORTHING	EASTING	GROUNDWATER ELEVATION (FEET)
ARAMW-1	1,062,938.38	2,439,120.01	294.75
ARAMW-2	1,062,925.96	2,439,114.97	294.51
ARAMW-7	1,063,049.07	2,438,913.27	296.54
ARAMW-8	1,062,895.98	2,439,197.40	296.10
ARAMW-9	1,063,022.92	2,438,935.47	296.36
ARAMW-10	1,063,082.33	2,438,902.85	297.55
ARAMW-11	1,063,077.03	2,438,902.96	297.03
ARAMW-12	1,062,906.98	2,439,199.15	247.23
ARGWA-19	1,063,774.45	2,439,488.71	313.99
ARGWA-20	1,063,732.73	2,439,088.01	314.42
ARGWC-21	1,062,941.24	2,439,112.52	294.75
ARGWC-22	1,063,039.36	2,438,925.04	296.53
ARGWC-23	1,062,884.38	2,439,202.38	295.03

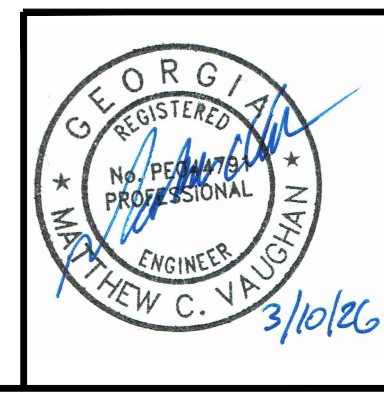
ISSUED FOR PERMIT



0	MAR 2026	RESPONSE TO EPD COMMENTS	TJ	RL
REV	DATE	DESCRIPTION	DRWN	CHKD

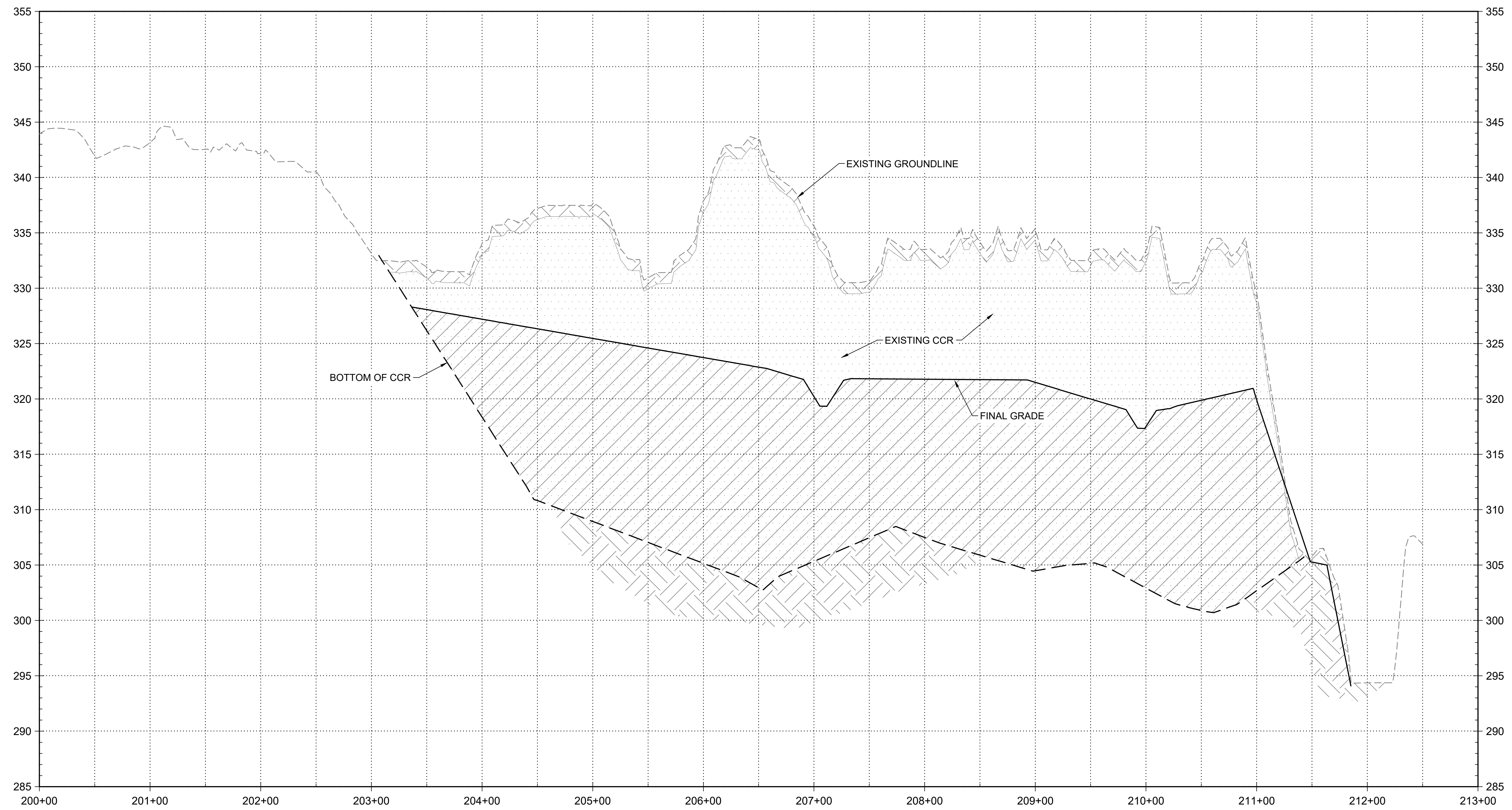
SITE MONITORING PLAN
**GEORGIA POWER - PLANT ARKWRIGHT
 AP2-DAS CLOSURE PLAN**
 MACON-BIBB COUNTY, GEORGIA

1110 Market Street, Suite 214A Chattanooga, Tennessee 37402-2863 www.stantec.com			
PROJECT NO.	175518230	DWG	08_175518230_106_SMP
SCALE	1" = 50'	SHEET	8
DATE	MARCH 2026		



SECTION OR DETAIL NO.
 TARGET DRAWING
 REFERENCE KEY

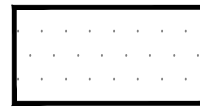
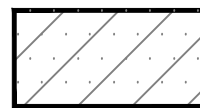

PLOT DATE: 3/9/2026 1:56 PM USER: PERRY, RICHARD
 I:\2026\AP2-DAS\ISSUED_FOR_PERMIT\PRODUCTION\DRAWING\AP2-DAS\CLOSURE_PLAN\PERMIT_REV_1\TJPSH01T.dwg



1 PROFILE - PROJECT BASELINE
 9 SCALE: 1" = 50' (HORIZONTAL)
 1" = 5' (VERTICAL)

NOTE:
 CCR REMOVAL BELOW FINAL GRADE SURFACE SHALL BE
 BACKFILLED WITH SOIL UP TO FINAL GRADE.

LEGEND

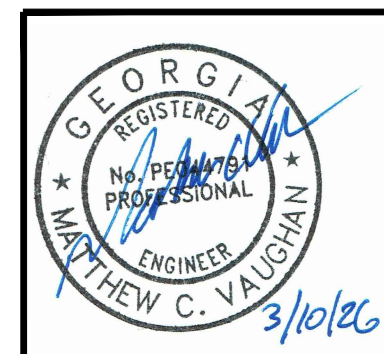
-  CCR TO BE REMOVED
-  CCR TO BE REMOVED AND BACKFILLED WITH SOIL
-  SOIL

ISSUED FOR PERMIT

REV	DATE	DESCRIPTION	DRWN	CHKD
0	MAR 2026	ISSUED FOR SUBMITTAL TO EPD	TJ	RL

PROFILE - PROJECT BASELINE
 GEORGIA POWER - PLANT ARKWRIGHT
 AP2-DAS CLOSURE PLAN
 MACON-BIBB COUNTY, GEORGIA

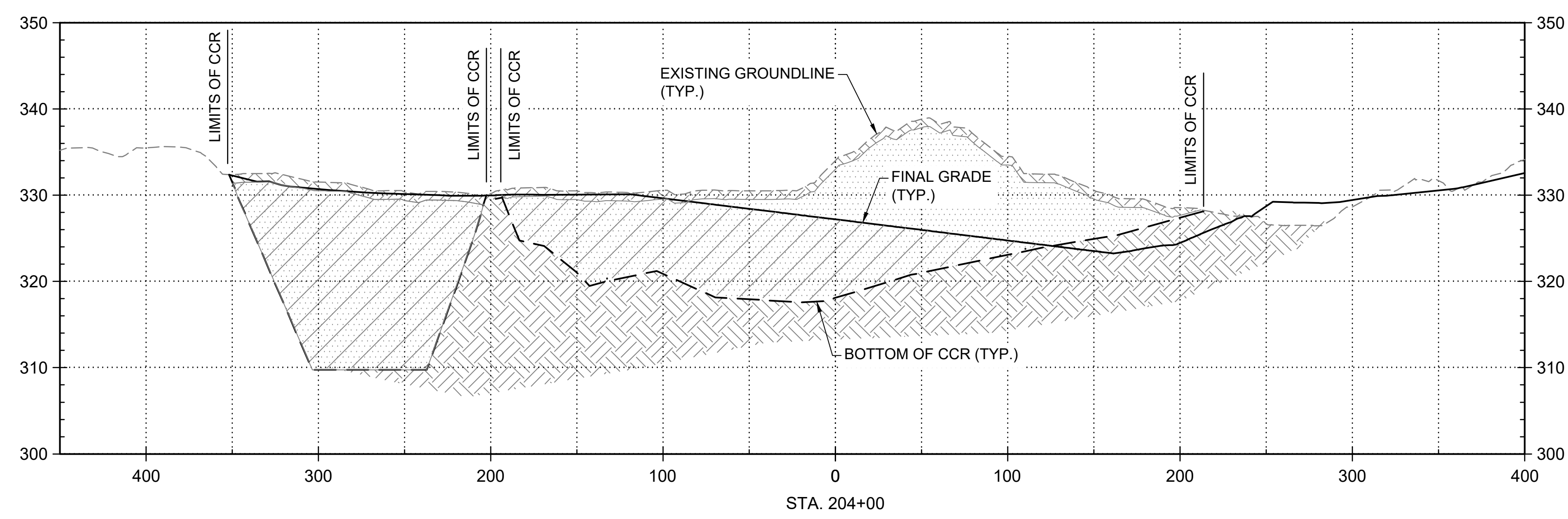
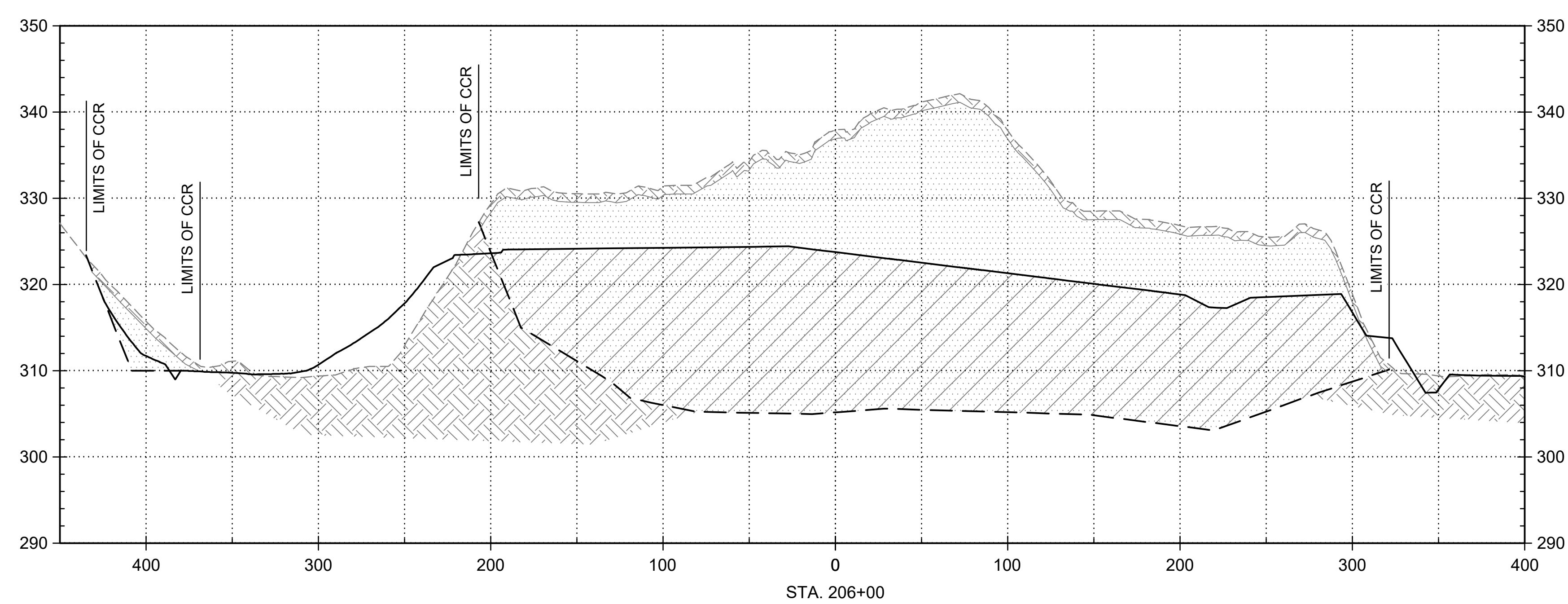
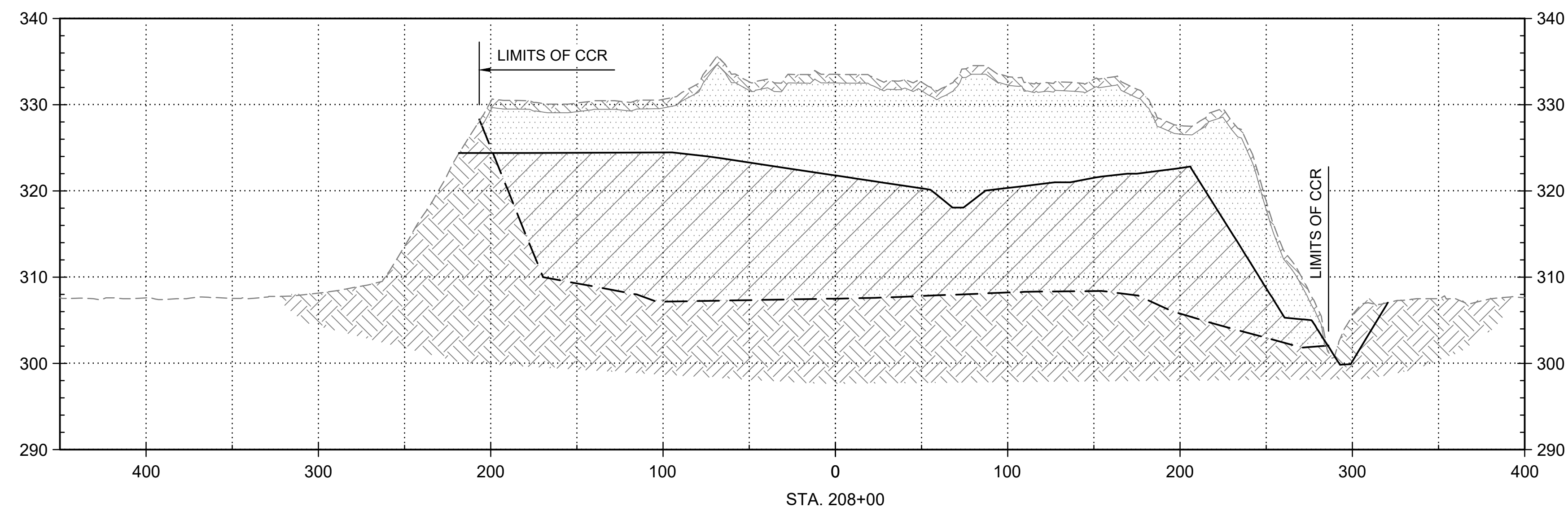
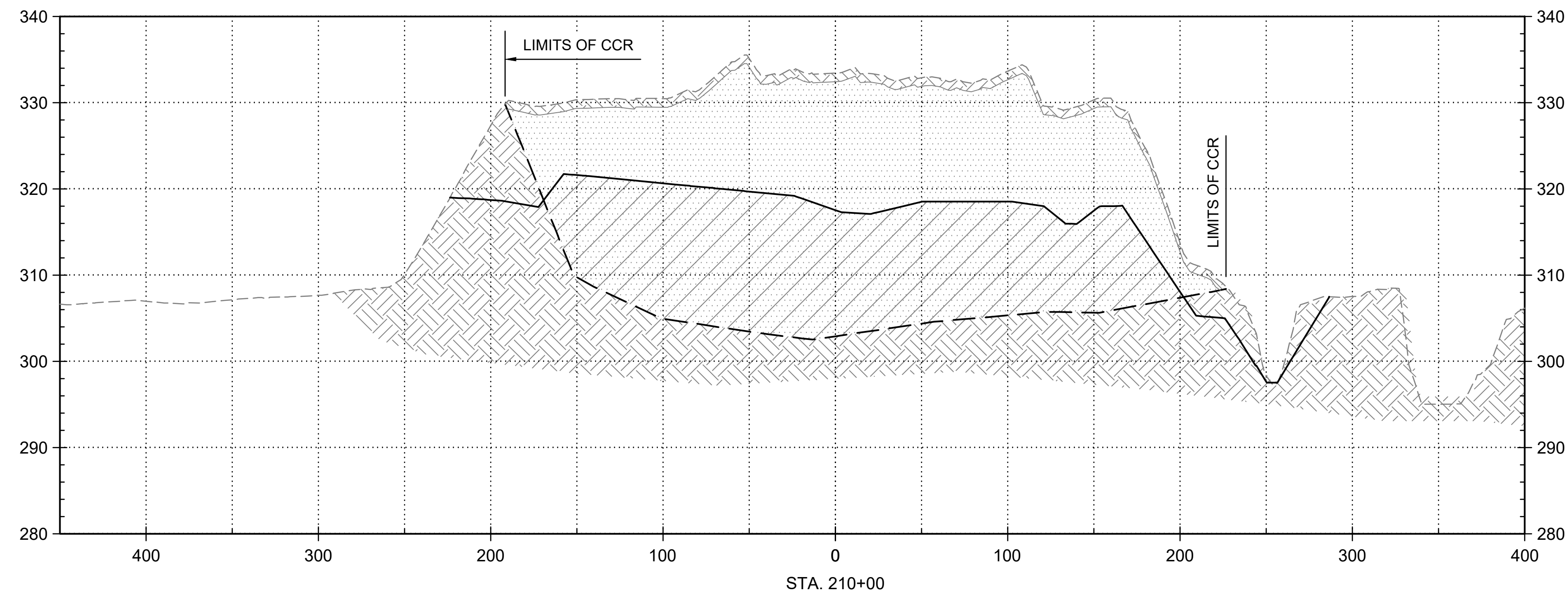
SECTION OR DETAIL NO.
 TARGET DRAWING
 REFERENCE KEY



1110 Market Street, Suite 214A
 Chattanooga, Tennessee 37402-2863
 www.stantec.com

Stantec

PROJECT NO.	175518230	DWG.	09_175518230_301_PRF1
SCALE	AS SHOWN	SHEET	9
DATE	MARCH 2026		



NOTE:
CCR REMOVAL BELOW FINAL GRADE SURFACE SHALL BE BACKFILLED WITH SOIL UP TO FINAL GRADE.

LEGEND

	CCR TO BE REMOVED
	CCR TO BE REMOVED AND BACKFILLED WITH SOIL
	SOIL

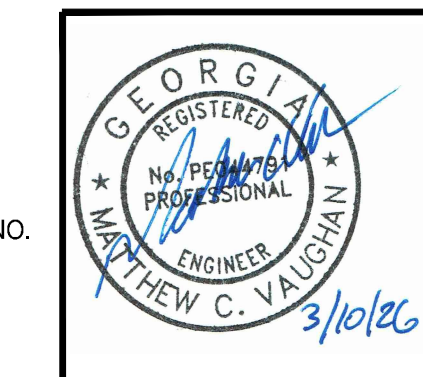
ISSUED FOR PERMIT

0	MAR 2026	ISSUED FOR SUBMITTAL TO EPD	TJ	RL
REV	DATE	DESCRIPTION	DRWN	CHKD

CROSS SECTIONS - PROJECT BASELINE

**GEORGIA POWER - PLANT ARKWRIGHT
AP2-DAS CLOSURE PLAN**

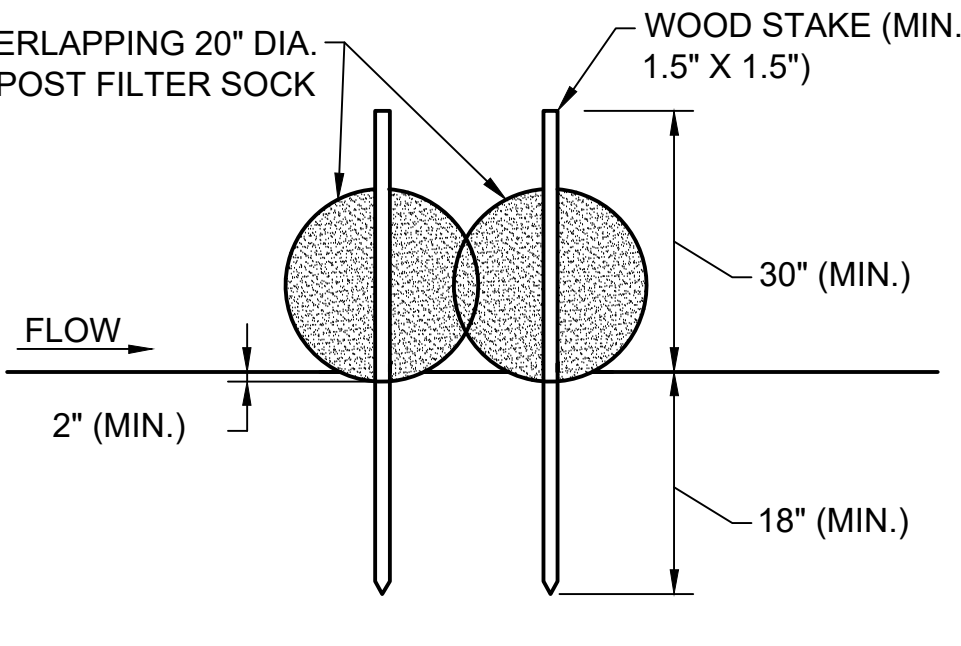
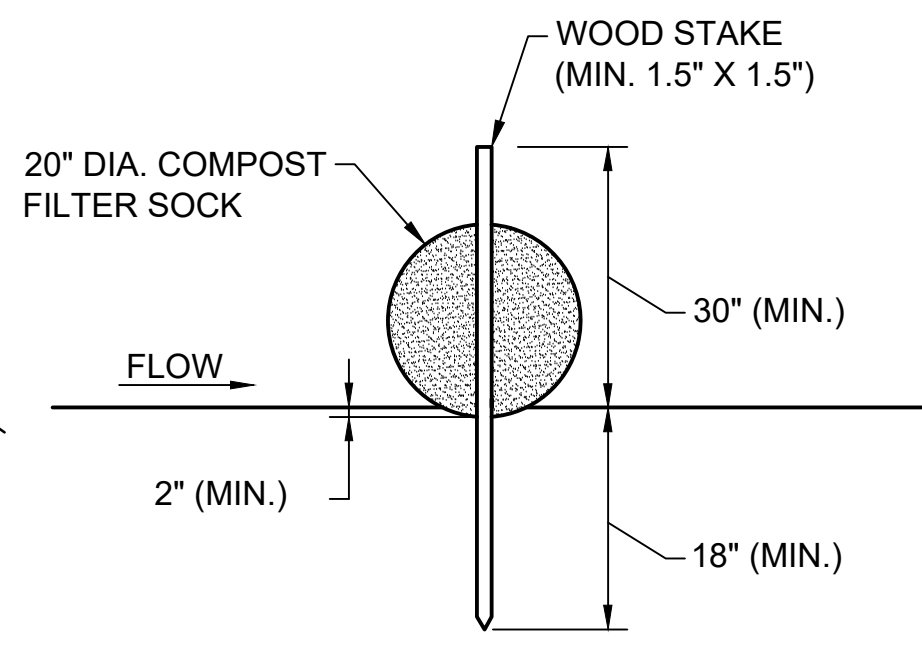
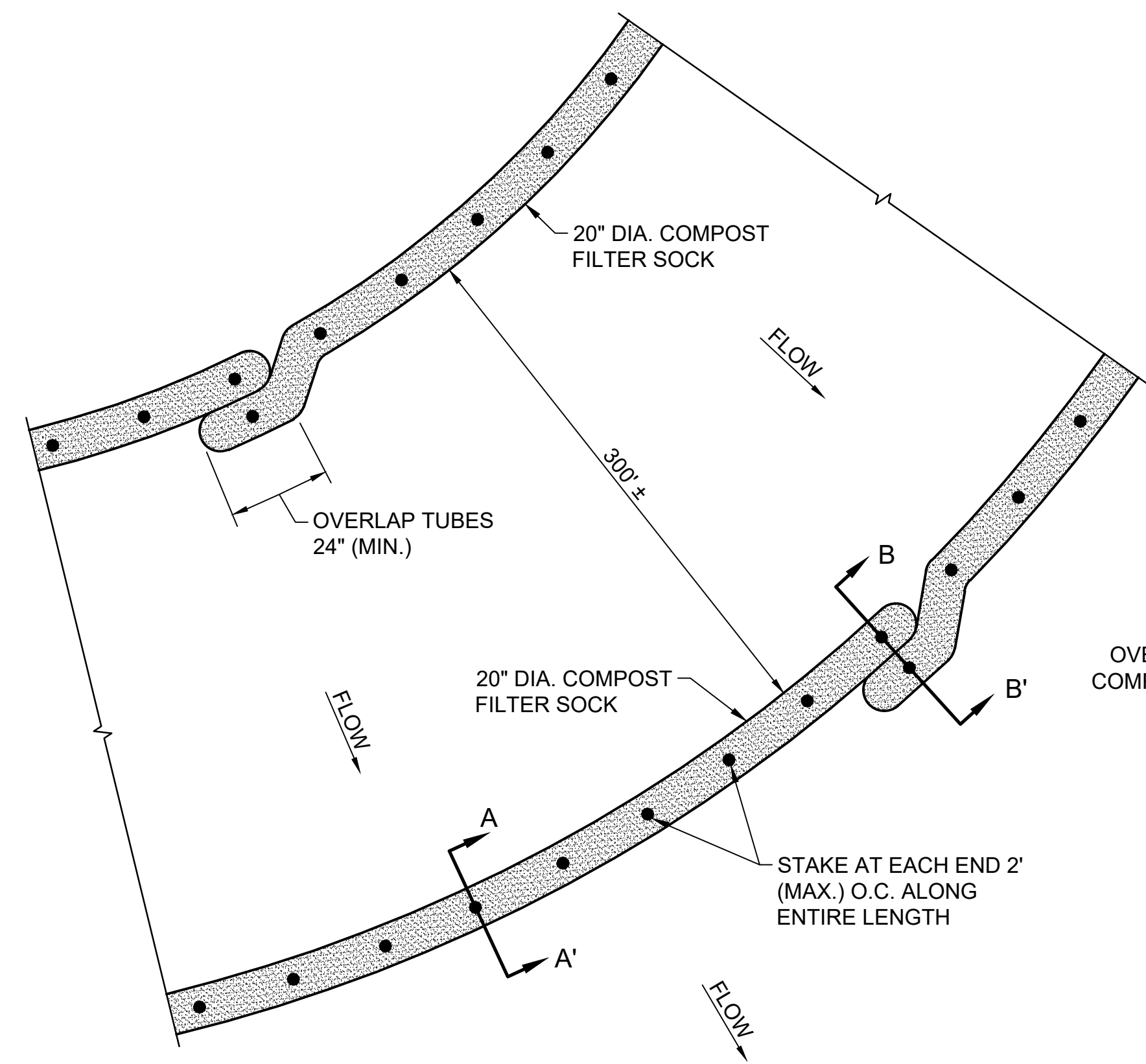
MACON-BIBB COUNTY, GEORGIA



1110 Market Street, Suite 214A Chattanooga, Tennessee 37402-2863 www.stantec.com		
PROJECT NO.	175518230	DWG. 10_175518230_302_XS1
SCALE	1" = 50' H, 1" = 10' V	SHEET 10
DATE	MARCH 2026	

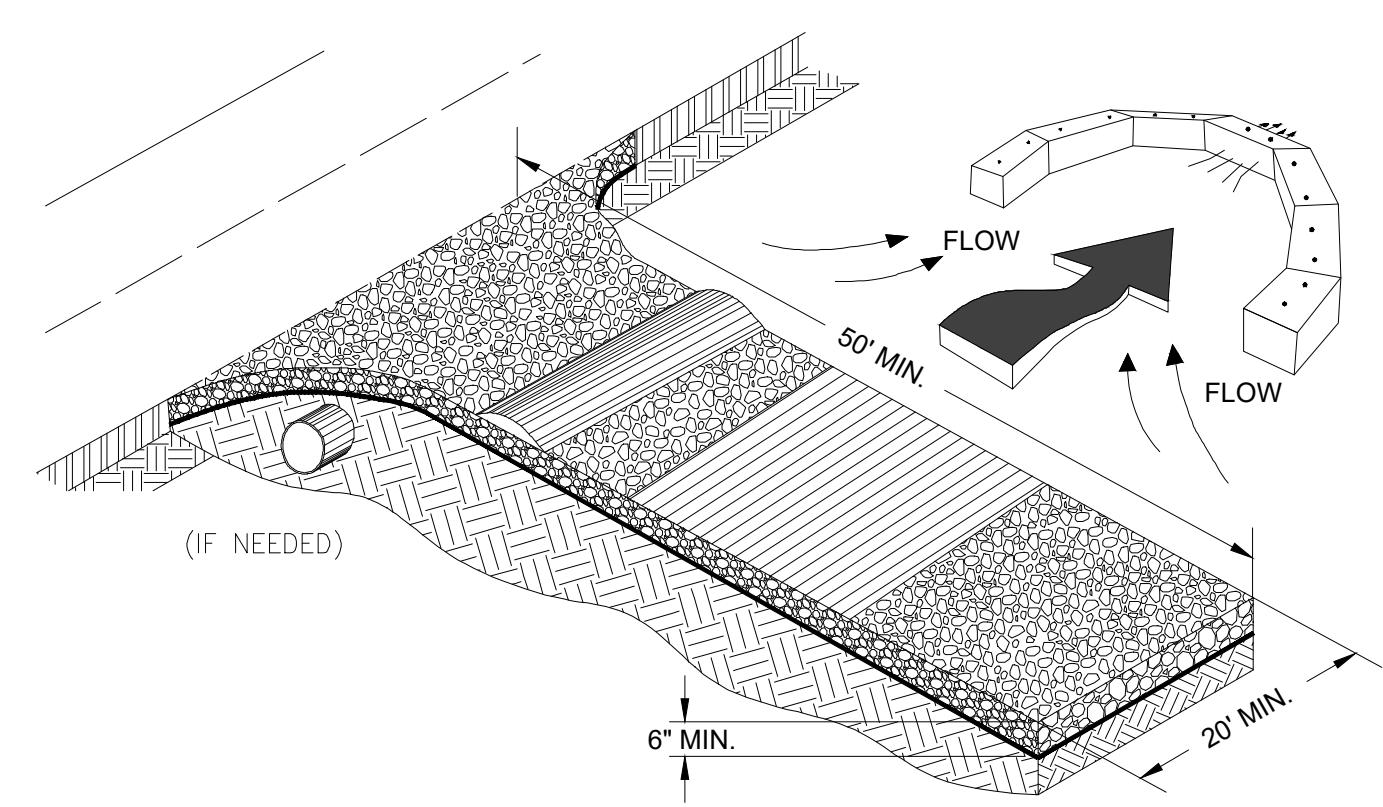
SECTION OR DETAIL NO.
TARGET DRAWING
REFERENCE KEY

PLOT DATE: 3/9/2026 3:28 PM USER: PERRY, RICHARD
 U:\2026\AP2-DAS CLOSURE PLAN\PRODUCTION\DRAWING\CLOSURE PLAN\PERMIT REVIEW\175518230_302.XS1.DWG



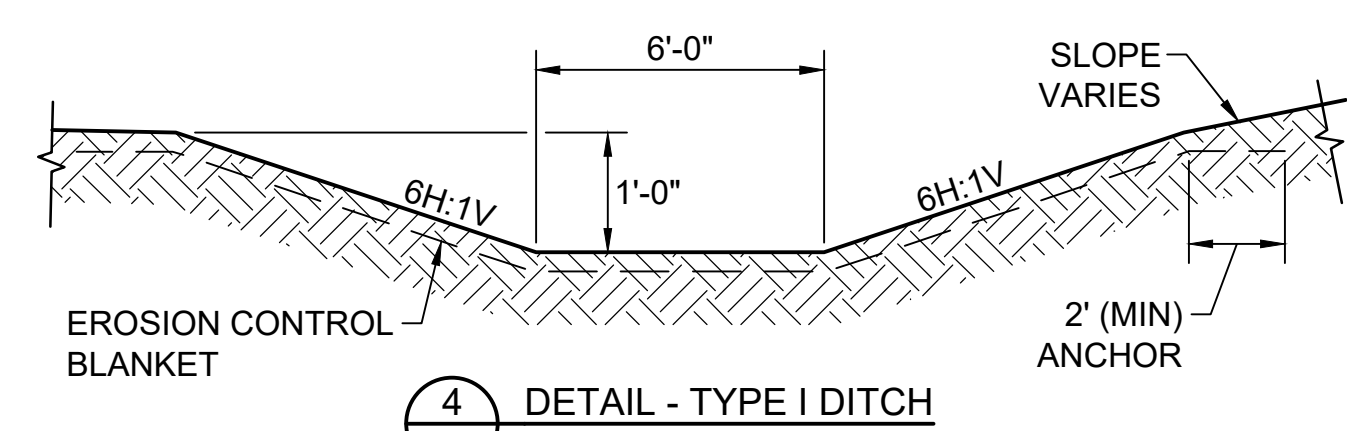
- NOTES:**
- COMPOST FILTER SOCKS SHALL BE INSTALLED WITH WOODEN STAKES (MIN. 1.5" X 1.5" ACTUAL). THE STAKE SHALL BE EMBEDDED A MINIMUM OF 18 INCHES.
 - COMPOST FILTER SOCKS SHALL BE TRENCHED IN A MINIMUM OF 2 INCHES.
 - IF MORE THAN ONE COMPOST FILTER SOCK IS PLACED IN A ROW IN SLOPE APPLICATION, THE COMPOST FILTER SOCKS SHALL BE OVERLAPPED A MINIMUM OF 24 INCHES TO PREVENT FLOW AND SEDIMENT FROM PASSING THROUGH THE FIELD JOINT. WHEN USED IN DITCHES, TWO ROWS OF FILTER SOCKS SHALL BE PLACED ON THE CHANNEL BOTTOM WITH STAGGERED JOINTS AS SHOWN.
 - CONSTRUCTED IN ACCORDANCE WITH CHAPTER 6 BMP STANDARDS AND SPECIFICATIONS FOR GENERAL LAND-DISTURBING ACTIVITIES OF THE GEORGIA SOIL AND WATER CONSERVATION COMMISSION.
 - ALTERNATIVE SIZES OR MATERIALS MAY BE USED BASED ON CONSTRUCTABILITY (I.E., WEIGHT OF SOCKS MAY BE DIFFICULT TO CARRY AND PLACE ON STEEP SLOPES) OR OTHER FACTORS UPON ENGINEER ACCEPTANCE.

1 DETAIL - COMPOST FILTER SOCK
SCALE: NTS

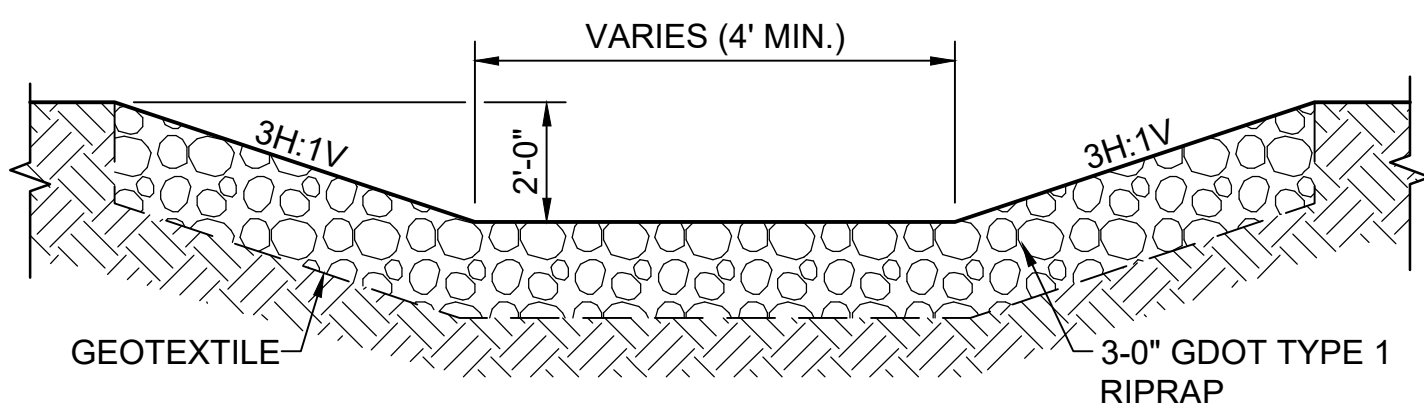


- NOTES:**
- AVOID LOCATING ON STEEP SLOPES OR AT CURVES ON PUBLIC ROADS.
 - REMOVE ALL VEGETATION AND OTHER UNSUITABLE MATERIAL FROM THE FOUNDATION AREA, GRADE, AND CROWN FOR POSITIVE DRAINAGE.
 - AGGREGATE SIZE SHALL BE IN ACCORDANCE WITH NATIONAL STONE ASSOCIATION R-2 (1.5"-3.5" STONE).
 - GRAVEL PAD SHALL HAVE A MINIMUM THICKNESS OF 6".
 - PAD WIDTH SHALL BE EQUAL FULL WIDTH AT ALL POINTS OF VEHICULAR EGRESS, BUT NO LESS THAN 20".
 - A DIVERSION RIDGE SHOULD BE CONSTRUCTED WHEN GRADE TOWARD PAVED AREA IS GREATER THAN 2%.
 - INSTALL PIPE UNDER THE ENTRANCE IF NEEDED TO MAINTAIN DRAINAGE DITCHES.
 - WHEN WASHING IS REQUIRED, IT SHOULD BE DONE ON AN AREA STABILIZED WITH CRUSHED STONE THAT DRAINS INTO AN APPROVED SEDIMENT TRAP OR SEDIMENT BASIN (DIVERT ALL SURFACE RUNOFF AND DRAINAGE FROM THE ENTRANCE TO A SEDIMENT CONTROL DEVICE).
 - WASHRACKS AND/OR TIRE WASHERS MAY BE REQUIRED DEPENDING ON SCALE AND CIRCUMSTANCE. IF NECESSARY, WASHRACK DESIGN MAY CONSIST OF ANY MATERIAL SUITABLE FOR TRUCK TRAFFIC THAT REMOVE MUD AND DIRT.
 - MAINTAIN AREA IN A WAY THAT PREVENTS TRACKING AND/OR FLOW OF MUD ONTO PUBLIC RIGHTS-OF-WAYS. THIS MAY REQUIRE TOP DRESSING, REPAIR AND/OR CLEANOUT OF ANY MEASURES USED TO TRAP SEDIMENT.

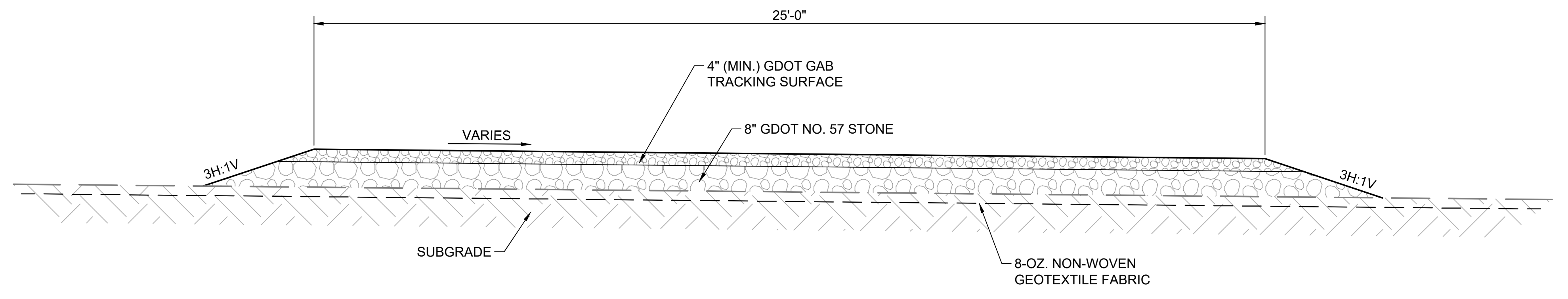
3 DETAIL - CRUSHED STONE CONSTRUCTION EXIT
SCALE: NTS



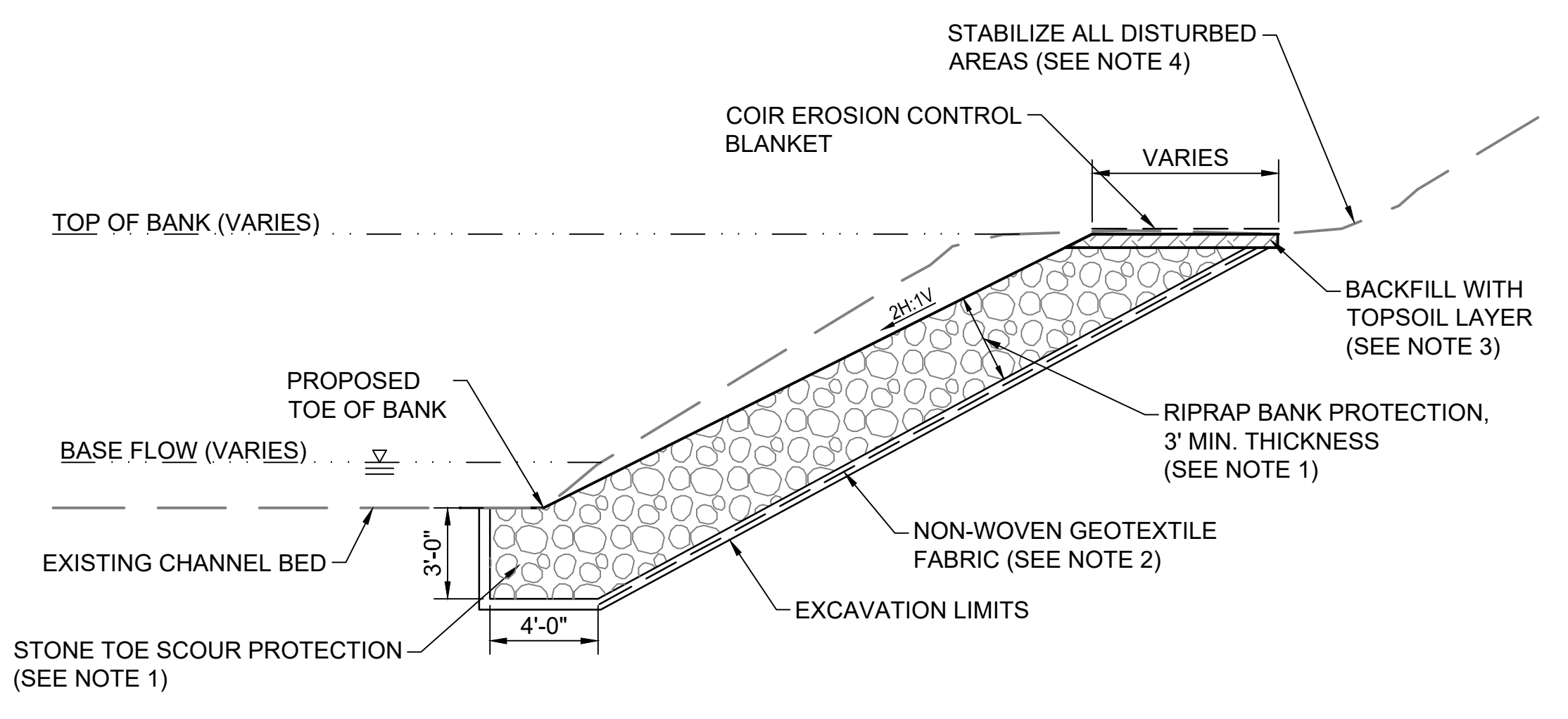
4 DETAIL - TYPE I DITCH
NOT TO SCALE



5 DETAIL - TYPE II DITCH
NOT TO SCALE



2 DETAIL - ACCESS ROAD
SCALE: 1/2"=1'-0"



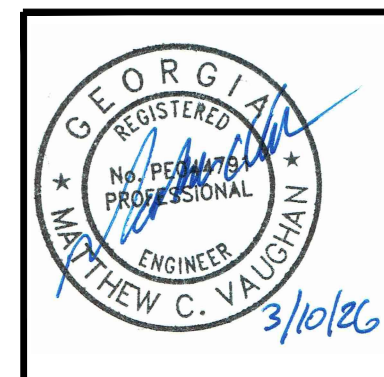
- NOTES:**
- STONE TOE SCOUR PROTECTION AND RIPRAP BANK PROTECTION SHALL CONSIST OF GDOT TYPE 1.
 - PLACE NON-WOVEN GEOTEXTILE FABRIC ALONG EXCAVATION LIMITS, BETWEEN THE RIPRAP BANK PROTECTION AND EXISTING GROUND.
 - AT TOP OF BANK, PLACE BACKFILL ABOVE RIPRAP BANK PROTECTION TO AN DEPTH 6" BELOW PROPOSED GROUND ELEVATION. SPREAD RIPARIAN SEED MIX ON TOP OF TOPSOIL AND COVER WITH A LAYER OF COIR EROSION CONTROL BLANKET AND SECURE WITH WOODEN STAKES. EDGE OF COIR EROSION CONTROL BLANKET TO BE BURIED UNDER TOPSOIL BACKFILL AND ABOVE RIPRAP BANK PROTECTION. MECHANICALLY COMPACT TOPSOIL PER SPECIFICATIONS.
 - ALL DISTURBED AREAS SHALL BE STABILIZED. SEE SITE RESTORATION PLAN FOR STABILIZATION REQUIREMENTS.
 - STRUCTURE MAY BE MODIFIED IN FIELD BY ENGINEER.

6 DETAIL - AP2 BANK STABILIZATION
NOT TO SCALE

ISSUED FOR PERMIT

REV	DATE	DESCRIPTION	DRWN	CHKD
0	MAR 2026	ISSUED FOR SUBMITTAL TO EPD	TJ	RL

DETAILS
**GEORGIA POWER - PLANT ARKWRIGHT
 AP2-DAS CLOSURE PLAN**
 MACON-BIBB COUNTY, GEORGIA

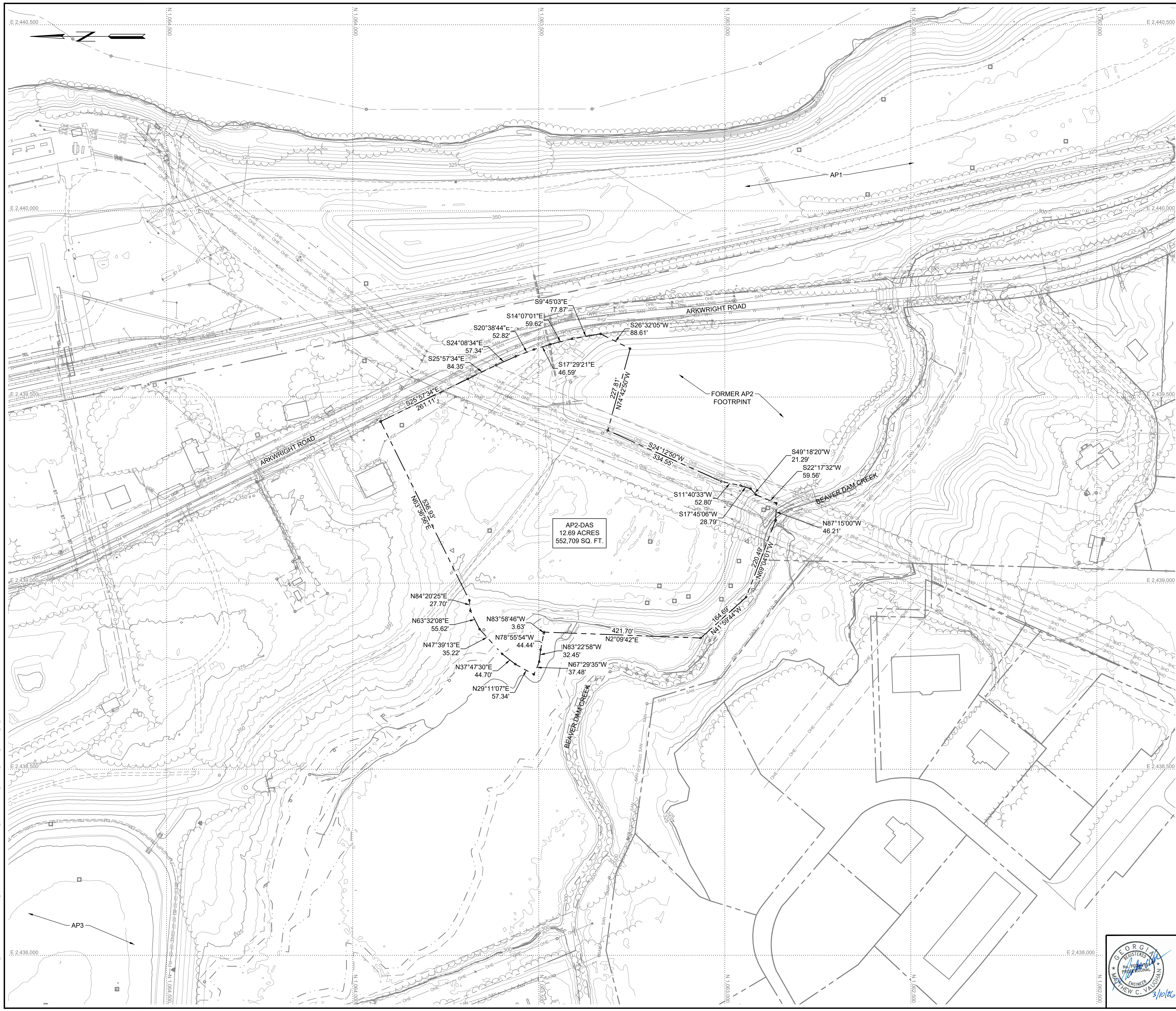


1110 Market Street, Suite 214A
 Chattanooga, Tennessee 37402-2863
 www.stantec.com

PROJECT NO. 175518230 DWG. 11_175518230_501_DTL1
 SCALE AS SHOWN SHEET 11
 DATE MARCH 2026

SECTION OR DETAIL NO.
 TARGET DRAWING
REFERENCE KEY

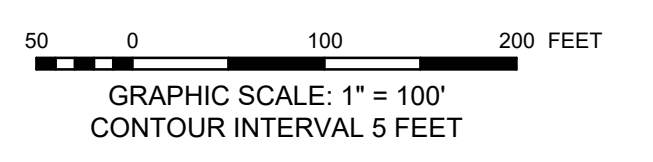
PLOT DATE: 3/9/2026 1:31 PM USER: PFEITY.RICHARD
 I:\2026\AP2\ISSUED_FOR_PERMIT\TECHNICAL_PRODUCTION\DRAWING\AP2\CLOSURE_PLAN\PERMIT_DRAWING\11_175518230_501_DTL1.DWG



MAPPING SOURCE NOTES:
 1. TOPOGRAPHIC INFORMATION WAS OBTAINED FROM A LIDAR SURVEY PERFORMED ON FEBRUARY 3, 2023 AND PROVIDED BY GEORGIA POWER COMPANY. PLANIMETRIC INFORMATION WAS PROVIDED BY GEORGIA POWER COMPANY AND DATED MAY 4, 2018.
 2. ALL COORDINATES ARE BASED ON NORTH AMERICAN DATUM 83 (NAD 83), GEORGIA STATE PLANE, WEST ZONE. ALL ELEVATIONS ARE BASED ON THE NORTH AMERICAN VERTICAL DATUM 88 (NAVD 88).

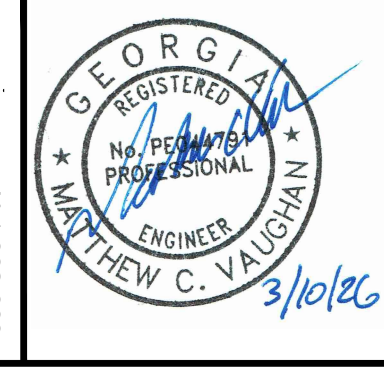
- LEGEND**
- 500 — EXISTING INDEX CONTOUR
 - — — — — EXISTING INTERMEDIATE CONTOUR
 - E — ELECTRIC LINE
 - FO — FIBER OPTIC LINE
 - OHE — ELECTRIC
 - G — GAS
 - TREELINE
 - WETLAND
 - WETLAND BUFFER
 - ST — STORM SEWER
 - RIVER EDGE
 - RIVER CENTERLINE
 - DITCH
 - X — FENCE
 - — — — — GUARDRAIL
 - — — — — RAILROAD
 - TREE/SHRUB
 - SIGN
 - POWER POLE
 - LIGHT POLE
 - MANHOLE
 - HEADWALL
 - DROP INLET
 - GUY WIRE ANCHOR
 - MISC. UNKNOWN
 - MISC. UNKNOWN
 - — — — — AP2-DAS PERMIT BOUNDARY

ISSUED FOR PERMIT



REV	DATE	DESCRIPTION	DRWN	CHKD
0	MAR 2026	ISSUED FOR SUBMITTAL TO EPD	TJ	RL

AP2-DAS PERMIT BOUNDARY
 GEORGIA POWER - PLANT ARKWRIGHT
 AP2-DAS CLOSURE PLAN
 MACON-BIBB COUNTY, GEORGIA



1110 Market Street, Suite 214A
 Chattanooga, Tennessee 37402-2863
 www.stantec.com

Stantec

PROJECT NO.	175518230	DWG.	12_175518230_101_SRV
SCALE	1" = 100'	SHEET	12
DATE	MARCH 2026		

PLOT DATE: 3/9/2026 3:37 PM USER: RYAN, RICHARD
 US2622.PSS/ISSUED: PROJECT/175518230/TECHNICAL_PRODUCTION/ARKWRIGHT_CLOSURE_PLAN/PERMIT/REV_01_P/ISSHET_T/FILED: 175518230_101_SRV.DWG