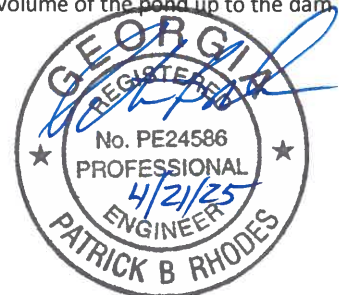


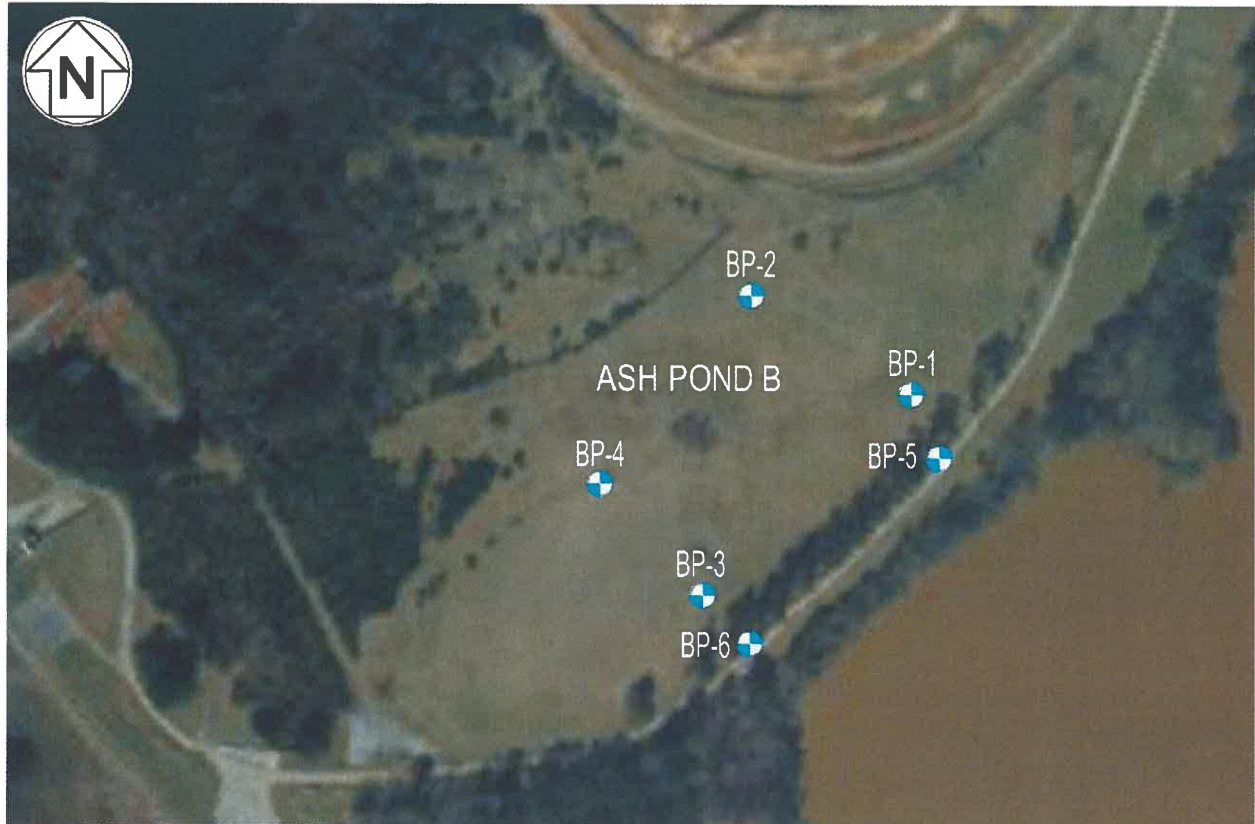
§ 257.100(f)(3)(iv) as set forth by §257.83(b)	<b>REPORT OF ANNUAL INSPECTION OF CCR SURFACE IMPOUNDMENT</b>		
	<b>FACILITY NAME:</b> Plant Branch Ash Pond B (AP-B)		
	<b>OWNER/OPERATOR OF FACILITY:</b> Georgia Power Company		
	<b>INSPECTION DATE:</b> October 30, 2024		
	<b>INSPECTING ENGINEER:</b> Patrick B. Rhodes, P.E. (Georgia P.E. License #24586)		
(i)	<b>ANY CHANGES IN GEOMETRY OF THE IMPOUNDING STRUCTURE SINCE THE PREVIOUS ANNUAL INSPECTION?</b>		N/A <sup>(1)</sup>
	(IF YES, DESCRIBE):		
(ii)	<b>LOCATION AND TYPE OF EXISTING INSTRUMENTATION</b>		See Attached Plan
(ii)	<b>MAXIMUM RECORDED READING OF EACH INSTRUMENT SINCE PREVIOUS ANNUAL INSPECTION</b>		N/A <sup>(1)</sup>
(iii)	<b>APPROXIMATE MINIMUM, MAXIMUM AND PRESENT DEPTH AND ELEVATION OF THE IMPOUNDED WATER SINCE PREVIOUS ANNUAL INSPECTION</b> <sup>(1)</sup>		
	MIN. DEPTH: N/A	MAX. DEPTH: N/A	PRESENT DEPTH: Up to 14 ft
	MIN. ELEVATION: N/A	MAX. ELEVATION: N/A	PRESENT ELEVATION: Up to 368 ft
(iii)	<b>APPROXIMATE MINIMUM, MAXIMUM AND PRESENT DEPTH AND ELEVATION OF CCR SINCE PREVIOUS ANNUAL INSPECTION</b> <sup>(1)</sup>		
	MIN. DEPTH: N/A	MAX. DEPTH: N/A	PRESENT DEPTH: Up to 62 ft
	MIN. ELEVATION: N/A	MAX. ELEVATION: N/A	PRESENT ELEVATION: Up to 396 ft
(iv)	<b>APPROXIMATE STORAGE CAPACITY OF IMPOUNDING STRUCTURE AT TIME OF INSPECTION</b>		2,300,000 yd <sup>3</sup> <sup>(2)</sup>
(v)	<b>APPROXIMATE VOLUME OF IMPOUNDED WATER AND CCR AT TIME OF INSPECTION</b>	<b>WATER:</b> 60,000 yd <sup>3</sup>	<b>CCR:</b> 2,012,000 yd <sup>3</sup>
(vi)	<b>ANY APPEARANCE OF AN ACTUAL OR POTENTIAL STRUCTURAL WEAKNESS OF THE CCR UNIT, IN ADDITION TO ANY EXISTING CONDITIONS THAT ARE DISRUPTING OR HAVE THE POTENTIAL TO DISRUPT THE OPERATION AND SAFETY OF THE CCR UNIT AND APPURTENANT STRUCTURES?</b>		No
	(IF YES, DESCRIBE):		
(vii)	<b>ANY OTHER CHANGE(S) WHICH MAY HAVE AFFECTED THE STABILITY OR OPERATION SINCE THE PREVIOUS ANNUAL INSPECTION?</b>		No
	(IF YES, DESCRIBE):		

(1) This is the first Annual inspection by a qualified professional engineer' performed in accordance with 40 CFR Part 257.100(f)(3)(iv). This information will be included in subsequent annual inspection reports.

(2) Approximate storage capacity of impounding structure is estimated as the total storage volume of the pond up to the dam crest elevation of 380 feet.



**INSTRUMENTATION PLAN  
PLANT BRANCH ASH POND B**



**LOCATION, TYPE, & MAXIMUM RECORDED READINGS OF INSTRUMENTATION  
PLANT BRANCH ASH POND B  
PIEZOMETERS**

Instrument	Location		Maximum Elevation Since Last Inspection (ft) <sup>(1)</sup>
	Latitude	Longitude	
BP-1	33.18955497	-83.29912062	N/A
BP-2 <sup>(2)</sup>	33.18995215	-83.29986988	N/A
BP-3	33.18876337	-83.30011176	N/A
BP-4 <sup>(2)</sup>	33.18920958	-83.30058897	N/A
BP-5	33.18929881	-83.29899030	N/A
BP-6	33.18856567	-83.29988907	N/A

(1) This is the first 'Annual inspection by a qualified professional engineer' performed in accordance with 40 CFR Part 257.100(f)(3)(iv). This information will be included in subsequent annual inspection reports.

(2) The location (latitude/longitude) has been updated from the February 10, 2025, submittal.