

CLOSURE DRAWINGS

FOR

GEORGIA POWER

PLANT YATES - ASH MANAGEMENT AREA

COWETA COUNTY, GEORGIA

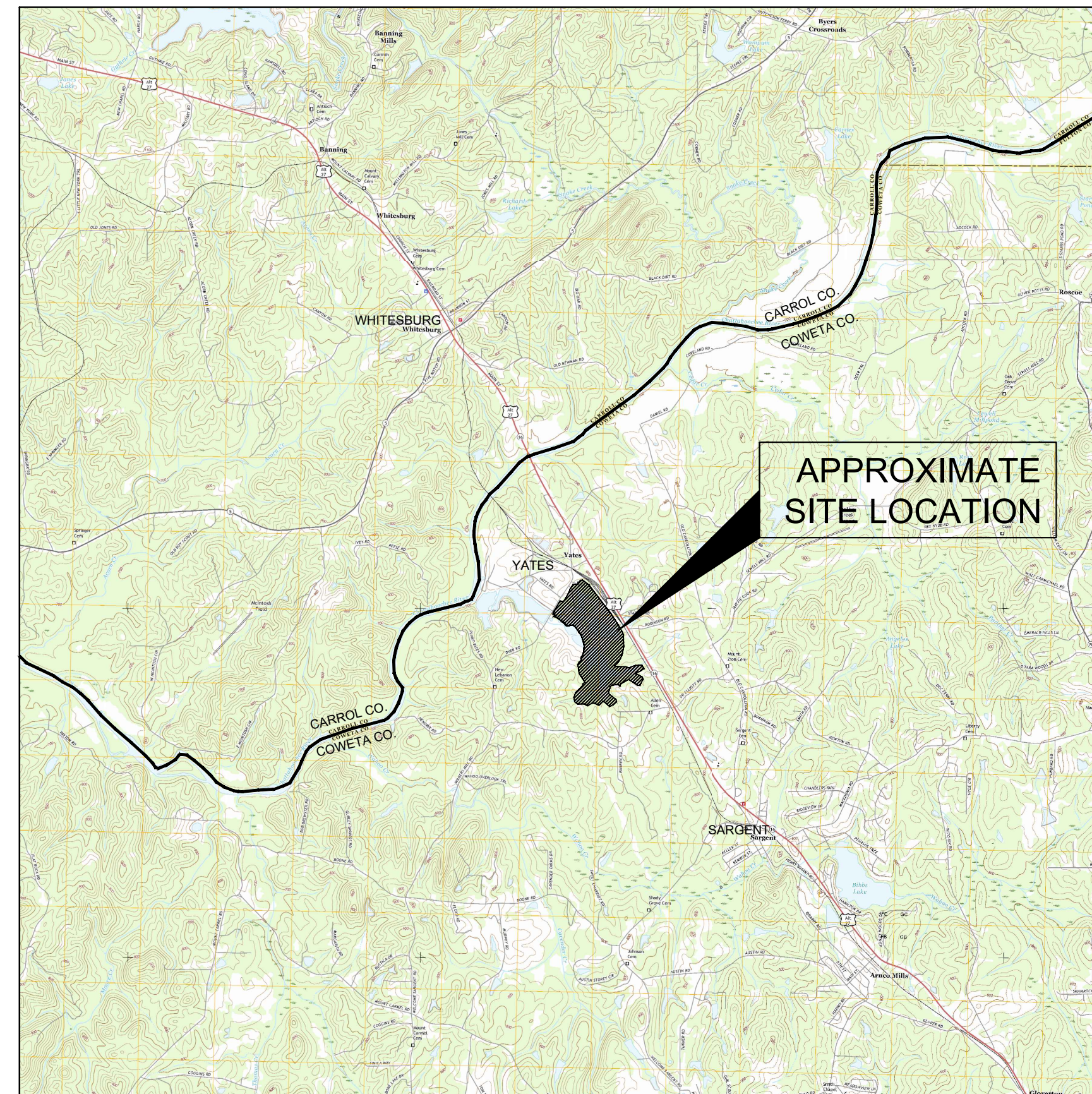
FEBRUARY 2026

PREPARED FOR:

GEORGIA POWER COMPANY
 241 RALPH MCGILL BLVD, NE
 ATLANTA, GA 30308
 TELEPHONE: (404) 506-6505

SITE ADDRESS

PLANT YATES
 708 DYER ROAD
 NEWNAN, GA30263
 (770) 252-0650



PROJECT SITE LOCATION
 SCALE: 1" = 1 MILE
 SOURCES: USGS QUAD MAP DATED 2017 WHITESBURG, GA
 USGS QUAD MAP DATED 2017 NEWNAN NORTH, GA
 USGS QUAD MAP DATED 2017 HULETT, GA
 USGS QUAD MAP DATED 2017 RICO, GA

REVISION HISTORY

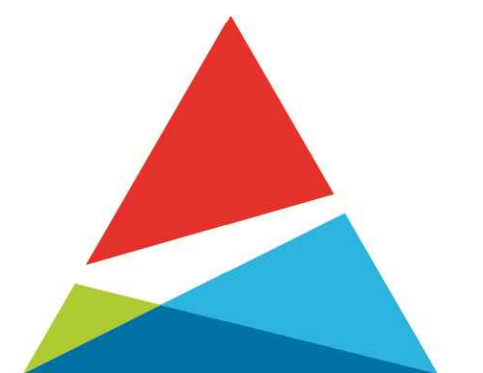
DATE	SHEETS	REQUESTED BY

INDEX OF DRAWINGS

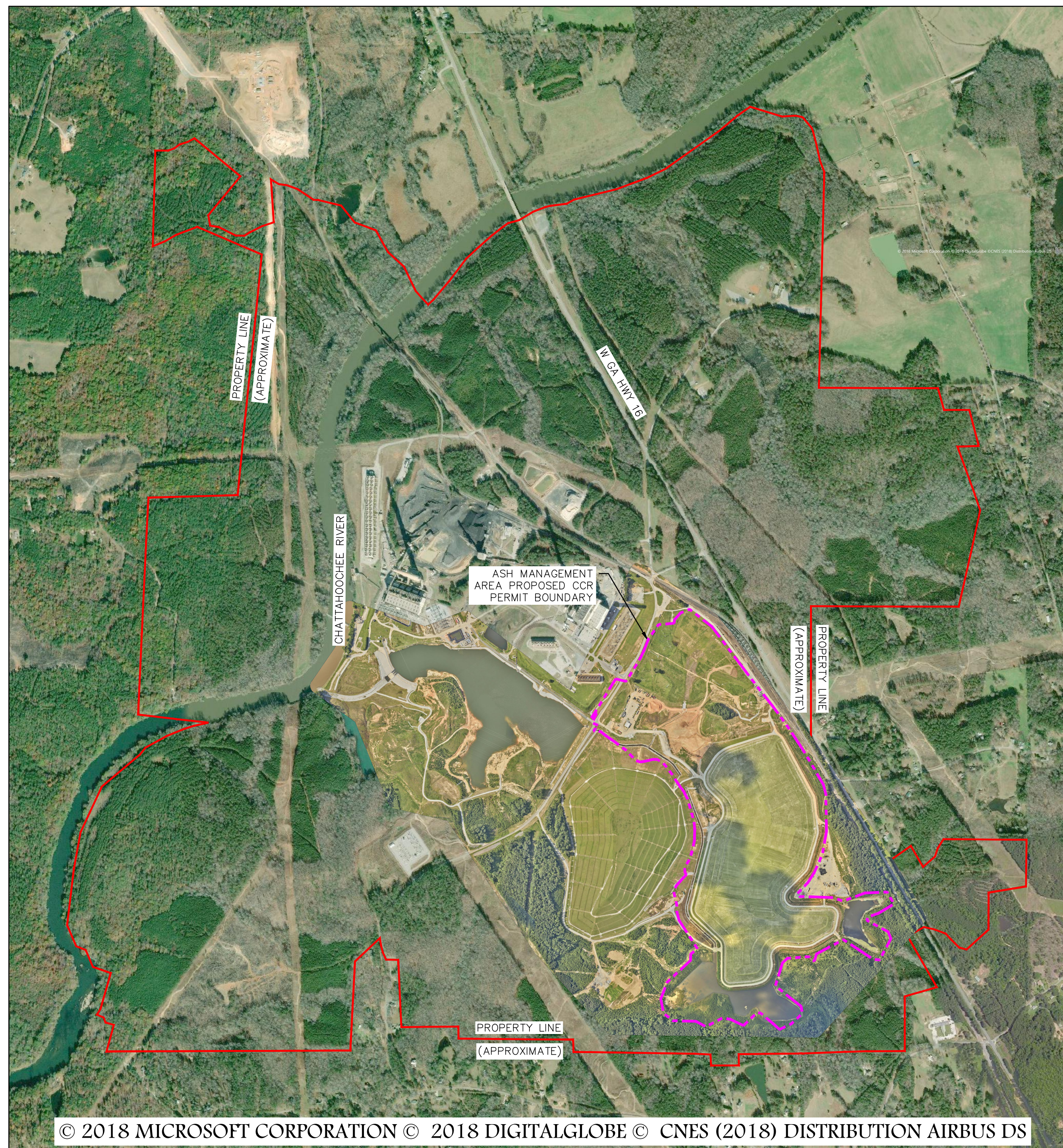
SHEET NO.	DESCRIPTION
1	COVER
2	PROPERTY BOUNDARY & LEGEND
3	PERMIT BOUNDARY & LEGAL DESCRIPTION
4	EXISTING CONDITIONS
5	FINAL GRADING PLAN
6	SECTION A
7	SECTION B
8	EROSION & SEDIMENTATION CONTROL PLAN
9	EROSION CONTROL DETAILS
10	CLOSURE DETAILS
11	AEM SUBSURFACE DRAIN DETAILS
12	TOE DRAIN DETAILS
13	ENVIRONMENTAL MONITORING PLAN



Atlantic Coast Consulting, Inc.
 1150 Northmeadow Pkwy, Suite 100, Roswell, GA 30076
 770-594-5998



Georgia Power



SOURCE: BING MAP 2018 AND AERIAL PROVIDED BY SOUTHERN COMPANY 2025
SCALE: 1" = 1000'



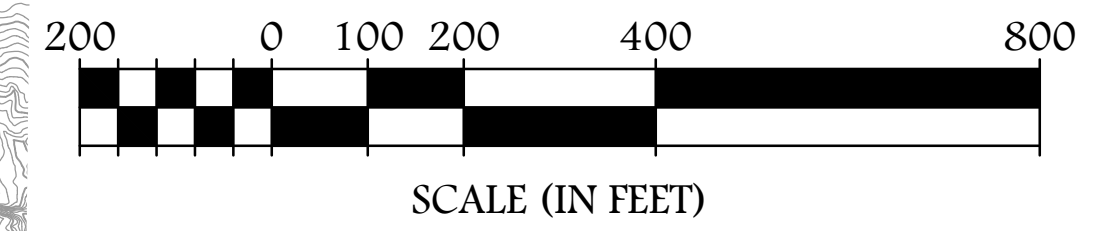
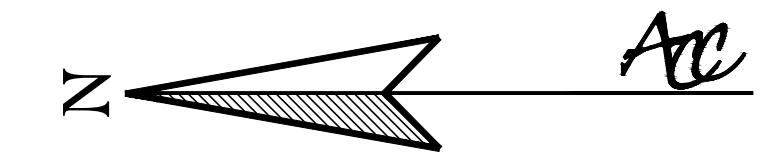
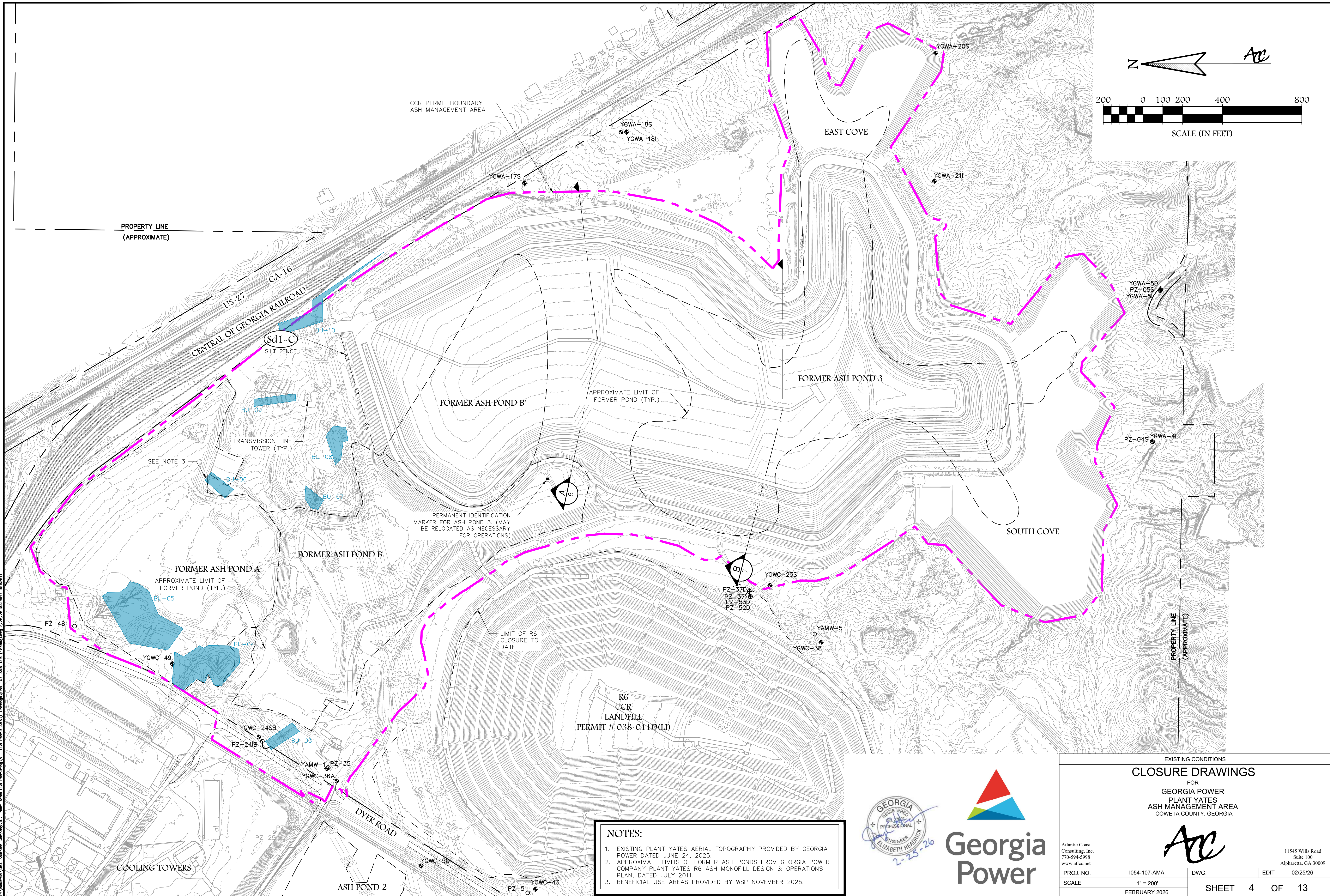
EXISTING	PROPOSED	DESCRIPTION
		APPROXIMATE PROPERTY BOUNDARY
		CCR PERMIT BOUNDARY
		10' CONTOUR
		2' CONTOUR
		PAVED ROAD
		TOE DRAIN
		TREE LINE
		RAILROAD
		APPROXIMATE LIMIT OF FORMER POND
		EXTENT OF FINAL COVER
		SUBSURFACE DRAIN
		GROUNDWATER MONITORING WELL
		PIEZOMETER
		CLOSURETURF PRESSURE RELEASE VALVE
		BU-05 BENEFICIAL REUSE
		CHP OVERHEAD POWER LINE
		POWER POLE
		TRANSMISSION LINE TOWER
		PERMANENT IDENTIFICATION MARKER
		INSTALLED CLEANOUT APPROXIMATE LOCATION
		INSTALLED PUMP RISER APPROXIMATE LOCATION

- GENERAL NOTES:**
- EXISTING PLANT YATES AERIAL TOPOGRAPHY PROVIDED BY GEORGIA POWER DATED MAY 26, 2017.
 - PROPERTY BOUNDARY SHOWN PROVIDED BY SOUTHERN COMPANY SERVICES IN ELECTRONIC FORMAT AND IS APPROXIMATE.
 - ALL DESIGN BY OTHERS. THESE PLANS ARE A DEPICTION OF THE CLOSURE OF THE ASH MANAGEMENT AREA BY CONSOLIDATION OF CCR AND CLOSURE IN PLACE.
 - ALL EROSION CONTROL MEASURES SHALL BE IN CONFORMANCE WITH THE CURRENT EDITION OF THE "MANUAL FOR EROSION AND SEDIMENT CONTROL IN GEORGIA." STORMWATER CONTROLS AND BEST MANAGEMENT PRACTICES SHALL BE DESIGNED, INSTALLED AND MAINTAINED IN ACCORDANCE WITH THE APPLICABLE NPDES CONSTRUCTION STORMWATER DISCHARGE GENERAL PERMIT, NPDES INDUSTRIAL STORMWATER DISCHARGE GENERAL PERMIT AND/OR THE FACILITY'S NPDES INDUSTRIAL WASTEWATER DISCHARGE INDIVIDUAL PERMIT.
 - STORM WATER DISCHARGES ASSOCIATED WITH CLOSURE ACTIVITIES WILL BE COVERED UNDER THE APPLICABLE NPDES CONSTRUCTION STORMWATER DISCHARGE GENERAL PERMIT, NPDES INDUSTRIAL STORMWATER DISCHARGE GENERAL PERMIT AND/OR THE FACILITY'S NPDES INDUSTRIAL WASTEWATER DISCHARGE INDIVIDUAL PERMIT.
 - STATE WATERS BUFFERS SHALL REMAIN UNDISTURBED, EXCEPT WHERE ENCROACHMENT IS REQUIRED TO FACILITATE CLOSURE ACTIVITIES. UNLESS OTHERWISE EXEMPTED BY THE APPROPRIATE NPDES CONSTRUCTION STORMWATER DISCHARGE GENERAL PERMIT, A STATE WATERS BUFFER VARIANCE SHALL BE OBTAINED FROM GEORGIA EPD'S WATERSHED PROTECTION BRANCH PRIOR TO BUFFER ENCROACHMENT. GEORGIA EPD'S SOLID WASTE MANAGEMENT BRANCH SHALL BE NOTIFIED WHEN GEORGIA POWER ENVIRONMENTAL AFFAIRS APPLIES FOR A STATE WATERS BUFFER VARIANCE. CONTACT GEORGIA POWER ENVIRONMENTAL AFFAIRS FOR ASSISTANCE.
 - PRIOR TO COMMENCING CONSTRUCTION ACTIVITIES FOR THIS PROJECT, THE PERMITTED BOUNDARY, THE LIMITS OF DISTURBANCE AND ALL WETLANDS AND STATE WATERS BUFFERS WITHIN 200 FEET OF THE LIMITS OF DISTURBANCE OR WITHIN THE PROPERTY BOUNDARY (WHICHEVER IS CLOSER) SHALL BE CLEARLY FLAGGED AND STAKED. THESE MARKINGS SHALL BE MAINTAINED UNTIL COMPLETION OF CONSTRUCTION / CLOSURE ACTIVITIES. SHOULD ANY OF THE MARKINGS BE DISTURBED, THE CONTRACTOR SHALL NOTIFY GEORGIA POWER COMPANY IMMEDIATELY. ALL CONSTRUCTION PERSONNEL SHALL BE SHOWN THE LOCATION OF THE LIMITS OF DISTURBANCE, STATE WATER BUFFERS, STATE WATERS AND WETLANDS OUTSIDE THE LIMITS OF DISTURBANCE TO PREVENT HEAVY EQUIPMENT ENCROACHMENT INTO THESE AREAS.

P:\Industrial\054-Southern Company\107-Plant Yates_CCR_Permitting\3 - CCR Permit_AMA\Drawings\054-107-AMA-002 (cadd)\fig 2/25/26 MATHEW TRUNNELL



PROPERTY BOUNDARY & LEGEND			
CLOSURE DRAWINGS			
FOR GEORGIA POWER PLANT YATES ASH MANAGEMENT AREA COWETA COUNTY, GEORGIA			
Atlantic Coast Consulting, Inc. 770-594-5998 www.atcc.net			
11545 Wills Road Suite 100 Alpharetta, GA 30009			
PROJ. NO.	1054-107-AMA	DWG.	EDIT 02/25/26
SCALE	1" = 1,000'	SHEET 2 OF 13	
FEBRUARY 2026			



PROPERTY LINE
(APPROXIMATE)

US-27
GA-16
CENTRAL OF GEORGIA RAILROAD
Sd1-C
SILT FENCE

CCR PERMIT BOUNDARY
ASH MANAGEMENT AREA

YGWA-18S
YGWA-18I

EAST COVE

YGWA-21

YGWA-20S

YGWA-5D
PZ-05S
YGWA-9I

YGWA-17S

FORMER ASH POND 3

FORMER ASH POND B'

APPROXIMATE LIMIT OF
FORMER POND (TYP.)

TRANSMISSION LINE
TOWER (TYP.)

SOUTH COVE

PERMANENT IDENTIFICATION
MARKER FOR ASH POND 3. (MAY
BE RELOCATED AS NECESSARY
FOR OPERATIONS)

FORMER ASH POND A

FORMER ASH POND B

APPROXIMATE LIMIT OF
FORMER POND (TYP.)

YGWC-23S

PZ-37D
PZ-37C
PZ-53D
PZ-52D

YAMW-5

YGWC-38

R6
CCR
LANDFILL
PERMIT # 038-011D(LD)

LIMIT OF R6
CLOSURE TO DATE

COOLING TOWERS

ASH POND 2

DYER ROAD

NOTES:

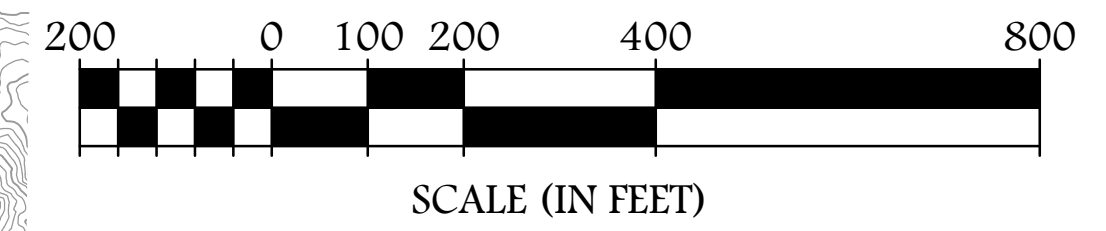
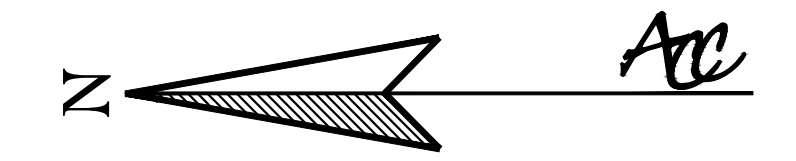
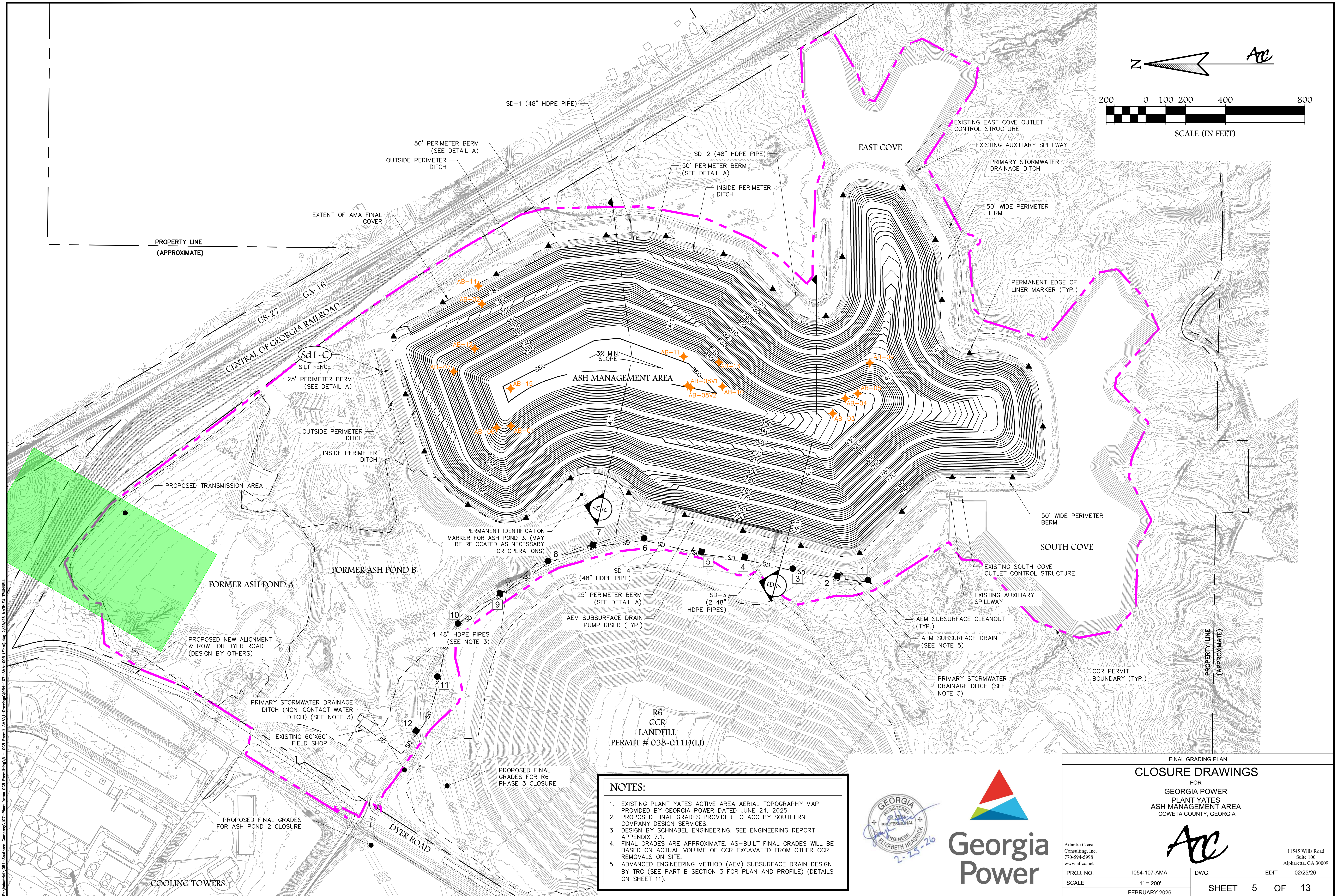
1. EXISTING PLANT YATES AERIAL TOPOGRAPHY PROVIDED BY GEORGIA POWER DATED JUNE 24, 2025.
2. APPROXIMATE LIMITS OF FORMER ASH PONDS FROM GEORGIA POWER COMPANY PLANT YATES R6 ASH MONOFILL DESIGN & OPERATIONS PLAN, DATED JULY 2011.
3. BENEFICIAL USE AREAS PROVIDED BY WSP NOVEMBER 2025.



EXISTING CONDITIONS			
CLOSURE DRAWINGS			
FOR GEORGIA POWER PLANT YATES ASH MANAGEMENT AREA COWETA COUNTY, GEORGIA			
PROJ. NO.	I054-107-AMA	DWG.	EDIT
SCALE	1" = 200'	02/25/26	
FEBRUARY 2026		SHEET	4 OF 13

Atlantic Coast Consulting, Inc.
770-594-5998
www.atcc.net
11545 Wills Road
Suite 100
Alpharetta, GA 30009

P:\Industrial\054-Southern Company\107-Plant Yates CCR Permits\05 - CCR Permit - AMA\Drawings\054-107-AMA-04_Closure.dwg 2/25/26 MATHEW TRAMMELL

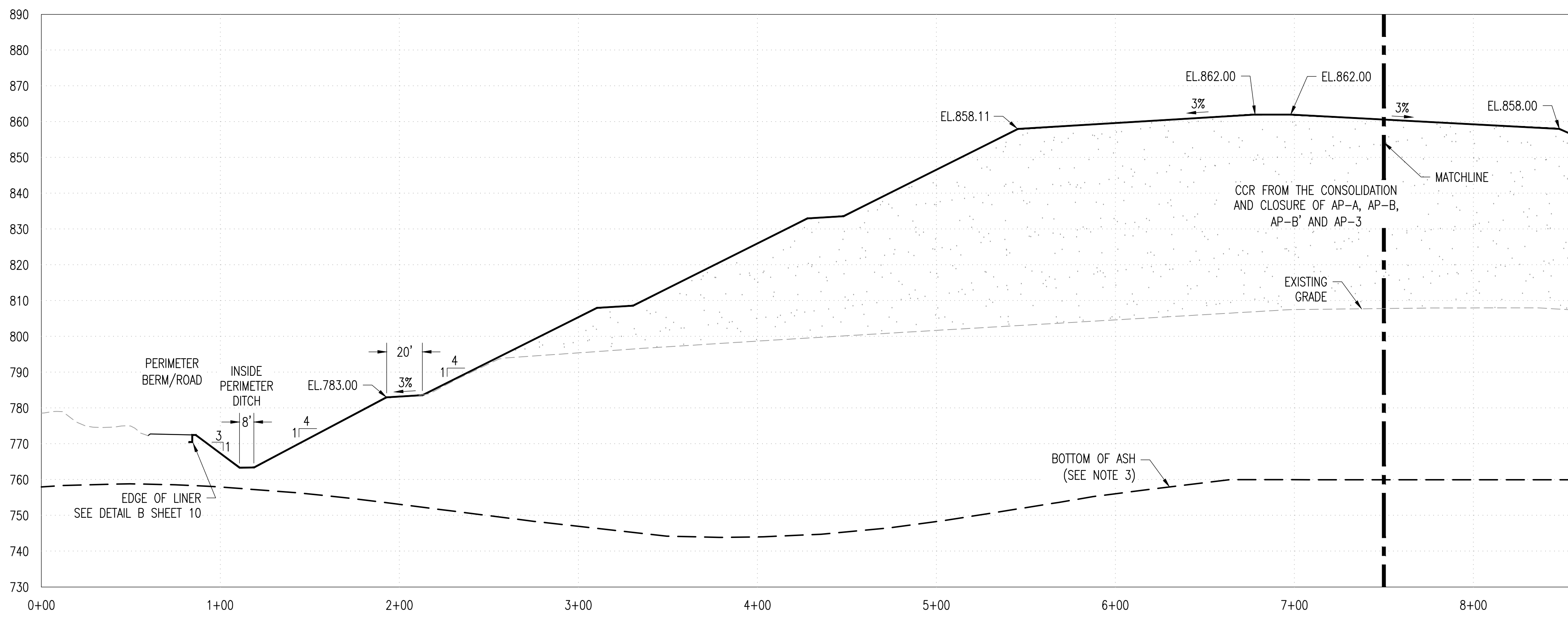


- NOTES:**
- EXISTING PLANT YATES ACTIVE AREA AERIAL TOPOGRAPHY MAP PROVIDED BY GEORGIA POWER DATED JUNE 24, 2025.
 - PROPOSED FINAL GRADES PROVIDED TO ACC BY SOUTHERN COMPANY DESIGN SERVICES.
 - DESIGN BY SCHNABEL ENGINEERING. SEE ENGINEERING REPORT APPENDIX 7.1.
 - FINAL GRADES ARE APPROXIMATE. AS-BUILT FINAL GRADES WILL BE BASED ON ACTUAL VOLUME OF CCR EXCAVATED FROM OTHER CCR REMOVALS ON SITE.
 - ADVANCED ENGINEERING METHOD (AEM) SUBSURFACE DRAIN DESIGN BY TRC (SEE PART B SECTION 3 FOR PLAN AND PROFILE) (DETAILS ON SHEET 11).



FINAL GRADING PLAN			
CLOSURE DRAWINGS			
FOR			
GEORGIA POWER			
PLANT YATES			
ASH MANAGEMENT AREA			
COWETA COUNTY, GEORGIA			
PROJ. NO.	I054-107-AMA	DWG.	EDIT
SCALE	1" = 200'		02/25/26
FEBRUARY 2026		SHEET 5	OF 13

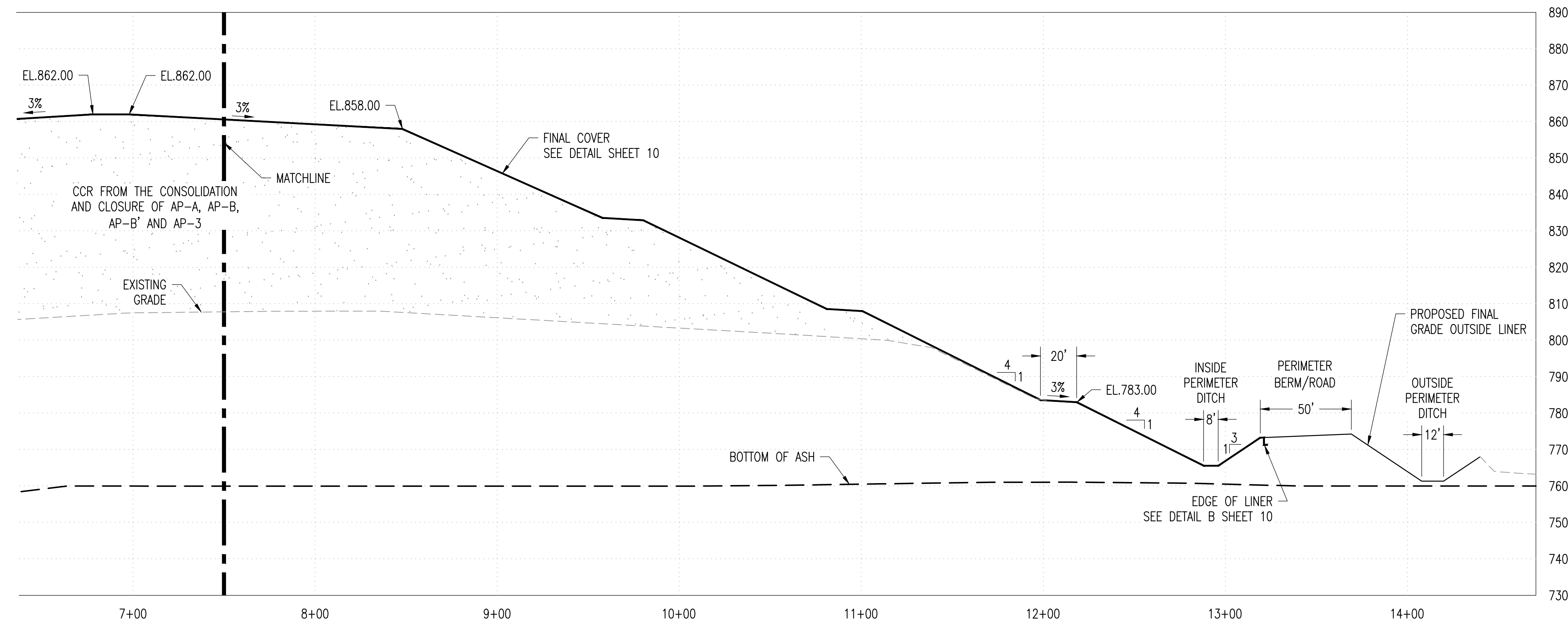
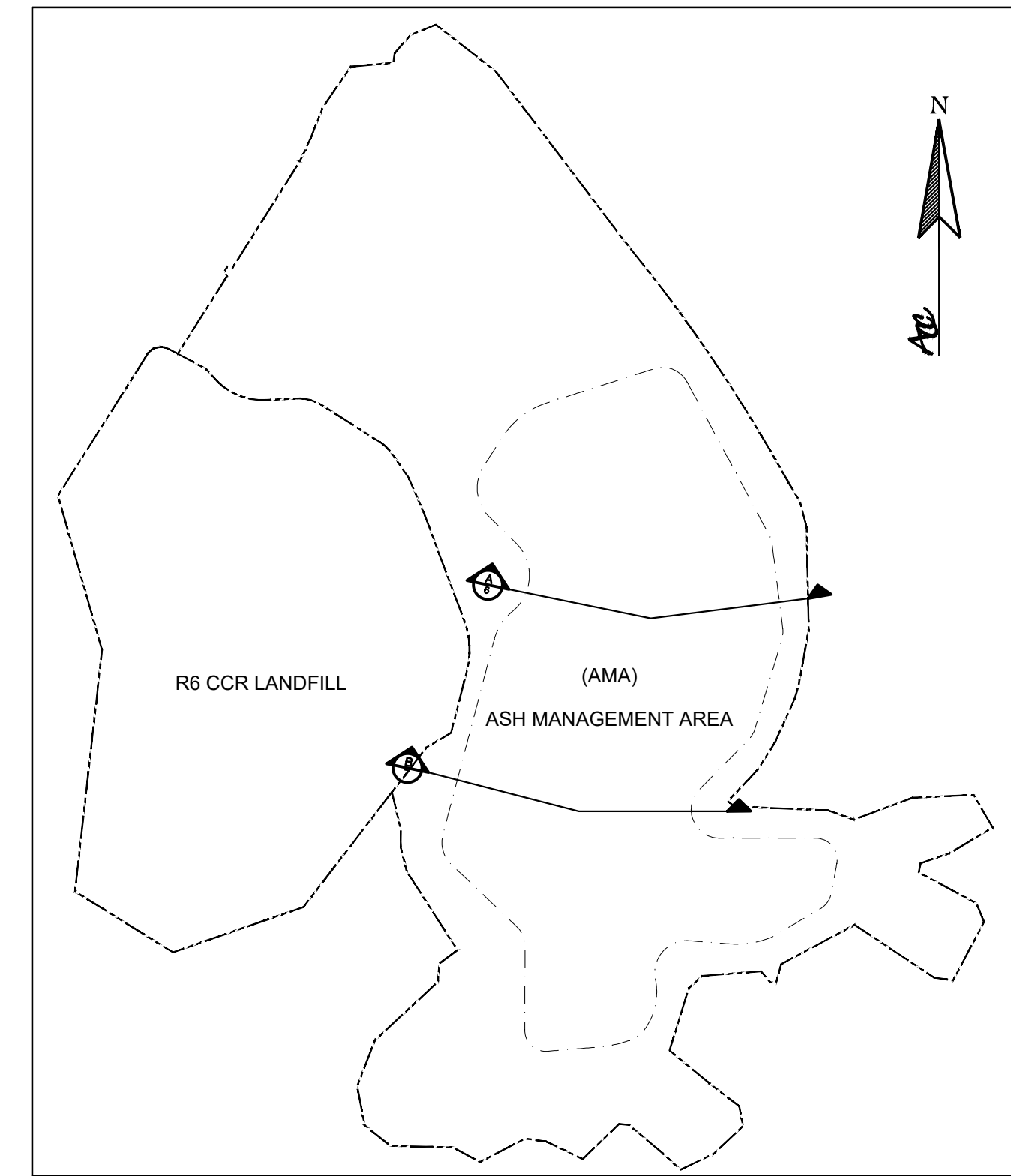
P:\Industry\054-Southern Company\107-Plant Yates CCR Permits\AMA\Drawings\054-107-AMA-008 (Final) 2/25/26 (MATHIEU TRINNEL)



SECTION A
SCALE H: 1"= 40', V: 1"=20'

- NOTES:**
1. EXISTING GROUND FROM PLANT YATES AERIAL TOPOGRAPHY PROVIDED BY GEORGIA POWER DATED JUNE 24, 2025.
 2. THE ASH MANAGEMENT AREA IS CURRENTLY BEING CONSOLIDATED AND CLOSED IN PLACE AND CONTAINS CCR FROM ASH POND-1, ASH POND-2, ASH POND-A AND ASH POND-B. THE FINAL CONSOLIDATED FOOTPRINT OF THE ASH MANAGEMENT AREA WILL BE CONFINED BY THE PERIMETER BERM ROAD AND WILL BE CAPPED WITH CLOSURETURF FINAL COVER SYSTEM.
 3. BOTTOM OF ASH SURFACE PROVIDED BY GEORGIA POWER SEPTEMBER 2025.

AMA SECTION KEY

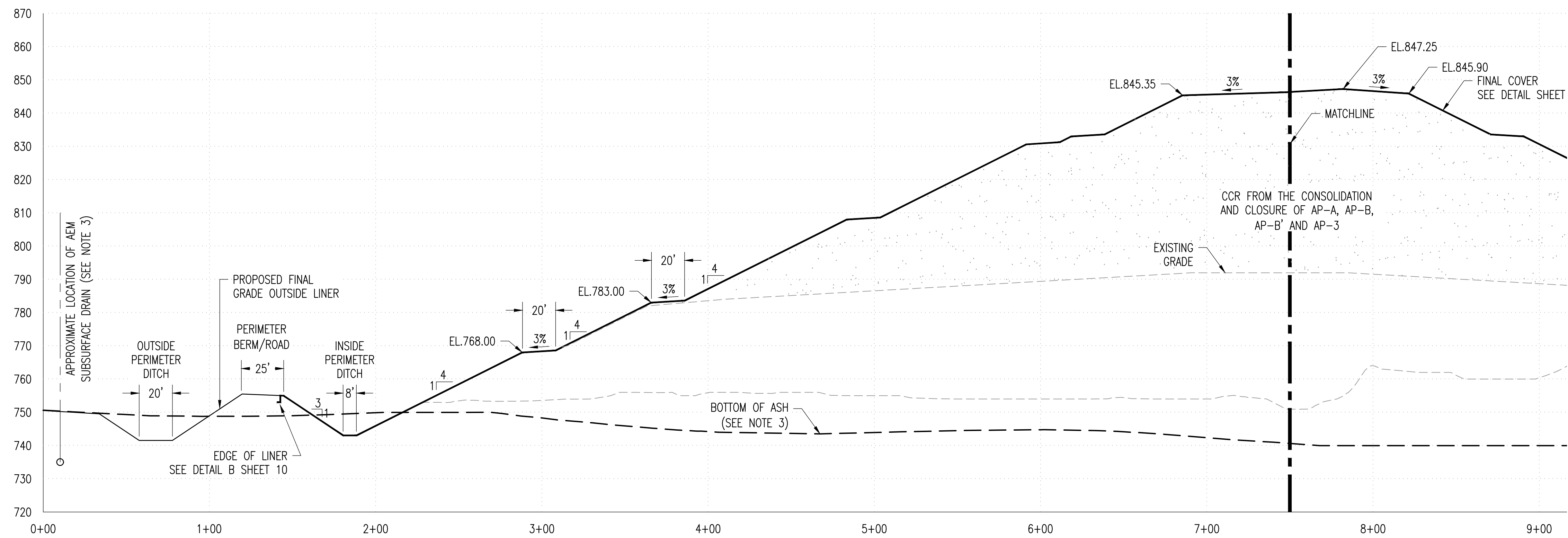


SECTION A
SCALE H: 1"= 40', V: 1"=20'



SECTION A CLOSURE DRAWINGS FOR GEORGIA POWER PLANT YATES ASH MANAGEMENT AREA COWETA COUNTY, GEORGIA			
ACC			
Atlantic Coast Consulting, Inc. 770-594-5998 www.atcc.net		11545 Wills Road Suite 100 Alpharetta, GA 30009	
PROJ. NO.	I054-107-AMA	DWG.	EDIT 02/25/26
SCALE	N/A	SHEET 6 OF 13	
FEBRUARY 2026			

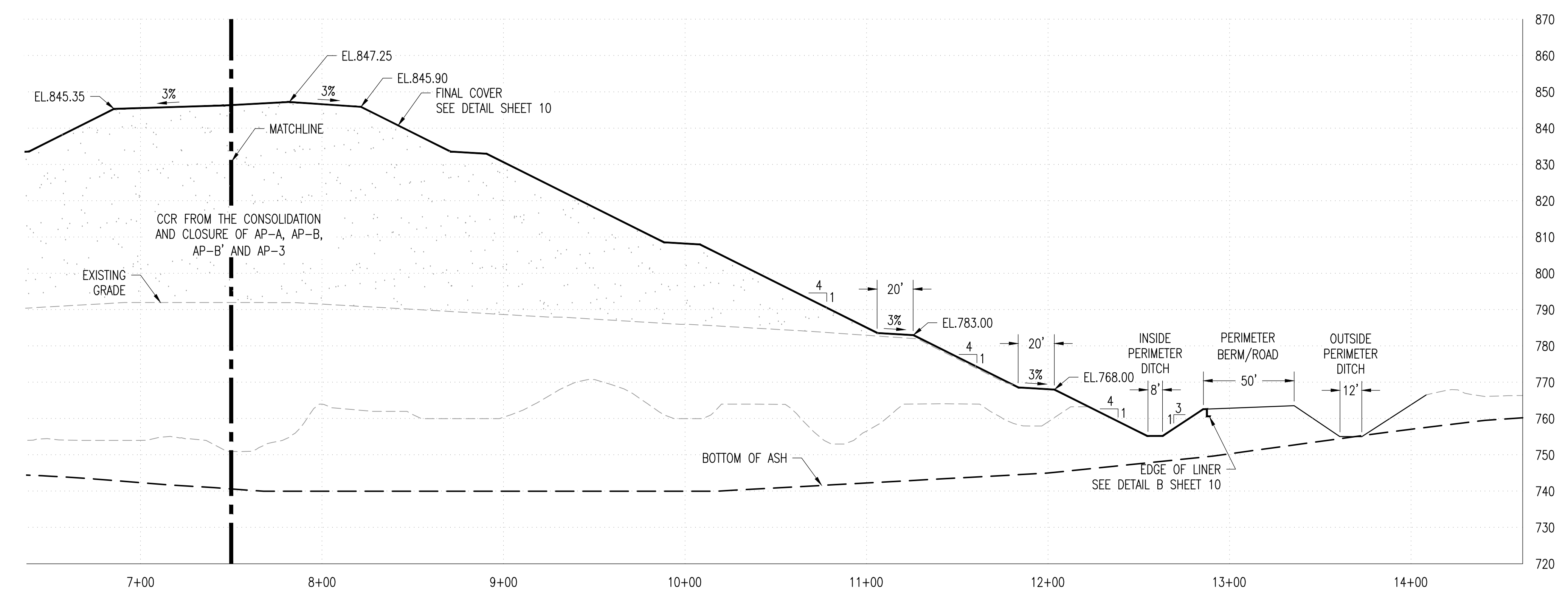
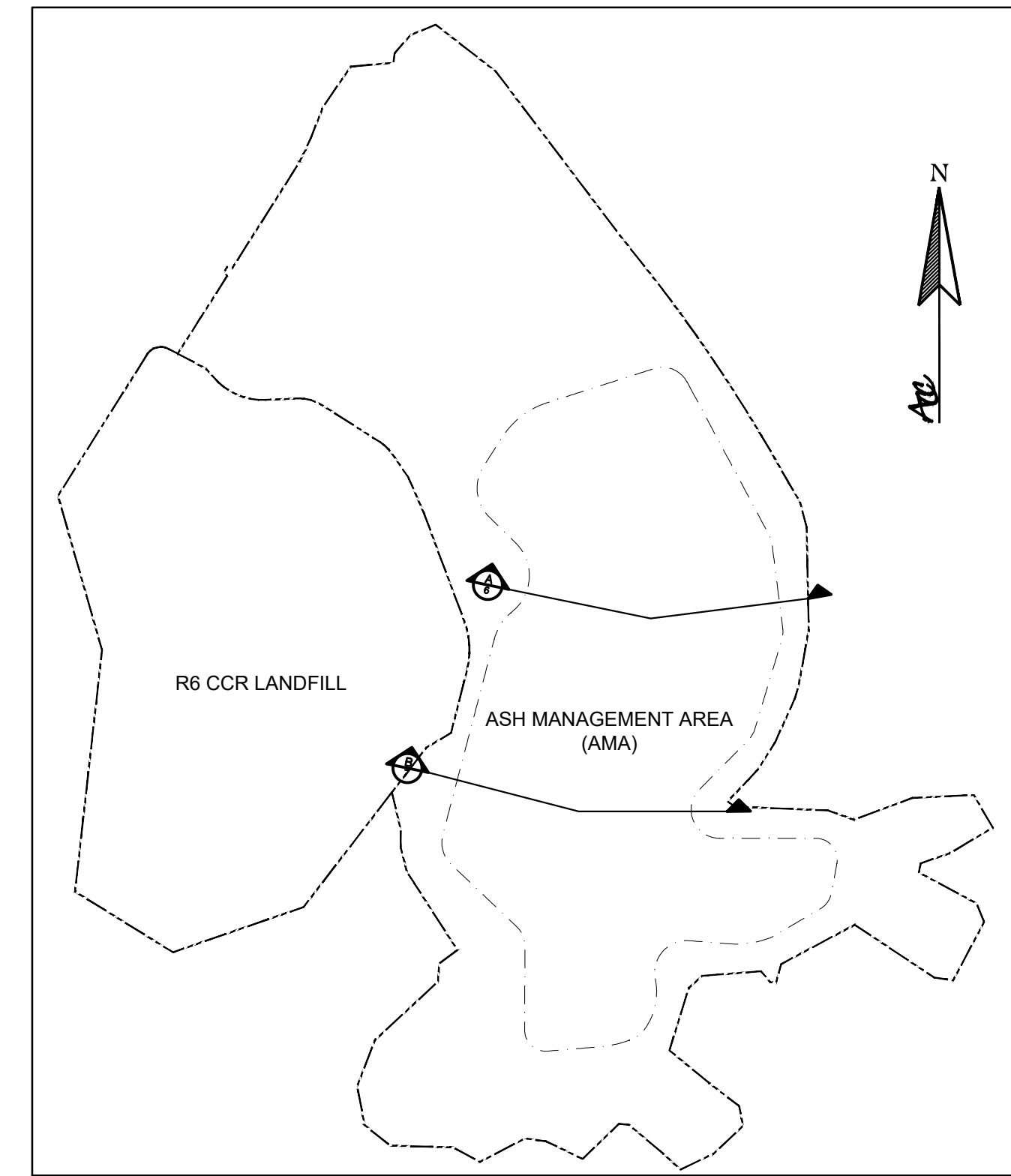
P:\Inland\054-Southern Company\107-Plant Yates CCR Permitting\054-107-AMA-001 (Sections)\dwg 2/25/26 MAHYEU TRINIGELL



SECTION B
SCALE H: 1"= 40', V: 1"=20'

- NOTES:**
- EXISTING GROUND FROM PLANT YATES AERIAL TOPOGRAPHY PROVIDED BY GEORGIA POWER DATED JUNE 24, 2025.
 - THE ASH MANAGEMENT AREA IS CURRENTLY BEING CONSOLIDATED AND CLOSED IN PLACE AND CONTAINS CCR FROM ASH POND-1, ASH POND-2, ASH POND-A AND ASH POND-B. THE FINAL CONSOLIDATED FOOTPRINT OF THE ASH MANAGEMENT AREA WILL BE CONFINED BY THE PERIMETER BERM ROAD AND WILL BE CAPPED WITH CLOSURETURF FINAL COVER SYSTEM.
 - BOTTOM OF ASH SURFACE PROVIDED BY GEORGIA POWER SEPTEMBER 2025.

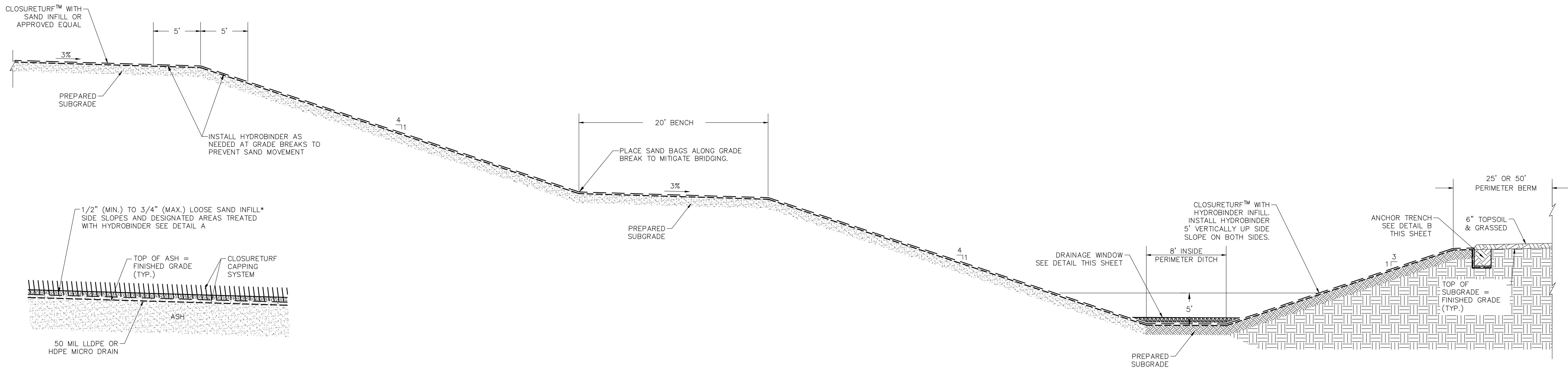
AMA SECTION KEY



SECTION B
SCALE H: 1"= 40', V: 1"=20'



SECTION B CLOSURE DRAWINGS FOR GEORGIA POWER PLANT YATES ASH MANAGEMENT AREA COWETA COUNTY, GEORGIA			
Atlantic Coast Consulting, Inc. 770-594-5998 www.atcc.net		11545 Wills Road Suite 100 Alpharetta, GA 30009	
PROJ. NO.	I054-107-AMA	DWG.	EDIT
SCALE	N/A		02/25/26
FEBRUARY 2026		SHEET 7	OF 13



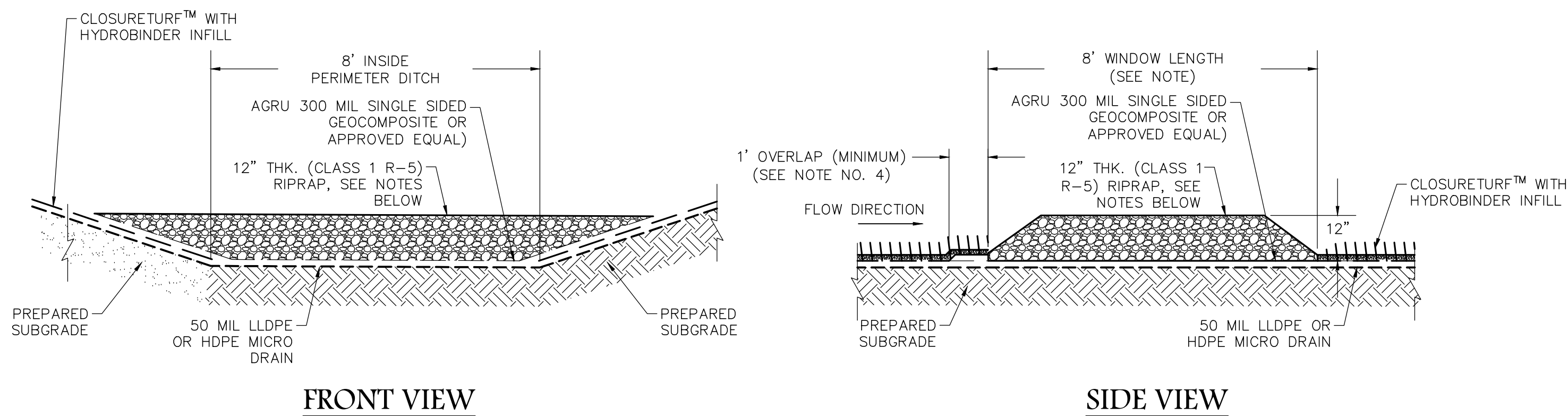
* INFILL TO BE APPROVED SAND INFILL COMPONENT FOR CLOSURETURF™ SYSTEM

CLOSURE TURF CAPPING SYSTEM DETAIL

N.T.S.

DETAIL A - TYPICAL SLOPE SECTION

N.T.S.



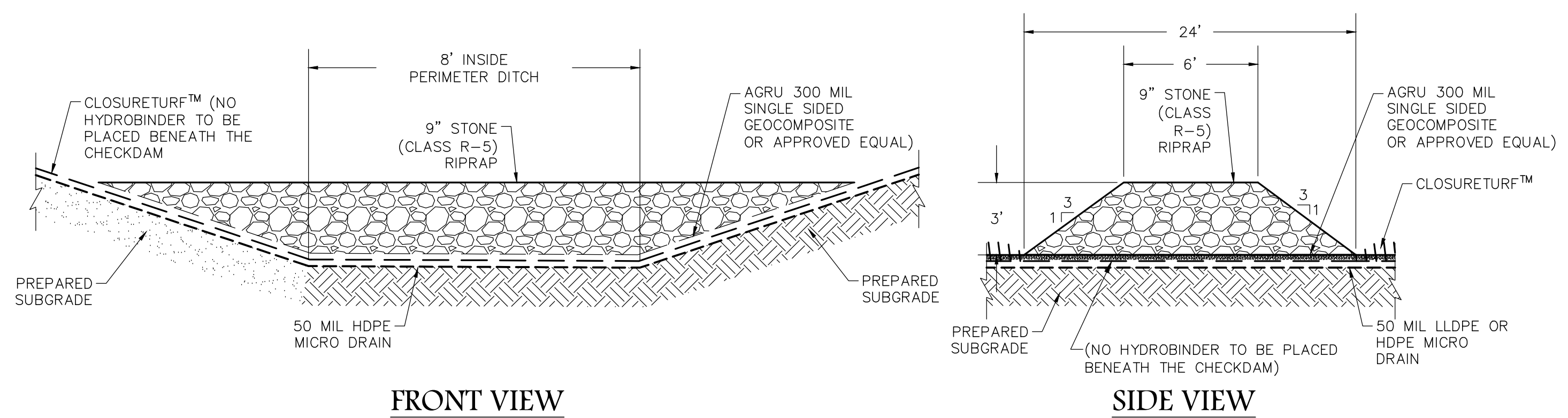
FRONT VIEW

SIDE VIEW

- NOTES:**
1. DRAINAGE WINDOWS SHALL BE 8" WIDE X 8" LONG, SHALL BE SPACED 200' C.T.C. UNLESS OTHERWISE INDICATED, AND CONSTRUCTED IN THE CHANNEL BOTTOM ONLY.
 2. CHANNEL SIDE SLOPES, CLOSURETURF™ WITH HYDROBINDER, AND 50 MIL LLDPE OR HDPE MICRO DRAIN LINER SHALL NOT BE DAMAGED DURING CONSTRUCTION. ANY DAMAGE SHALL BE REPAIRED AT THE CONTRACTOR'S EXPENSE AND TO THE PURCHASER'S SATISFACTION.
 3. THE SINGLE SIDED GEOCOMPOSITE SHALL BE PLACED WITH THE GEOGRID SIDE DOWN AND THE GEOTEXTILE SIDE UP.
 4. CONTRACTOR SHALL ASSURE THAT THE CLOSURETURF™ OVERLAPS THE GEOCOMPOSITE BY A MINIMUM OF 1 FOOT ON THE UPSTREAM FACE ONLY.

DRAINAGE WINDOW DETAIL

N.T.S.

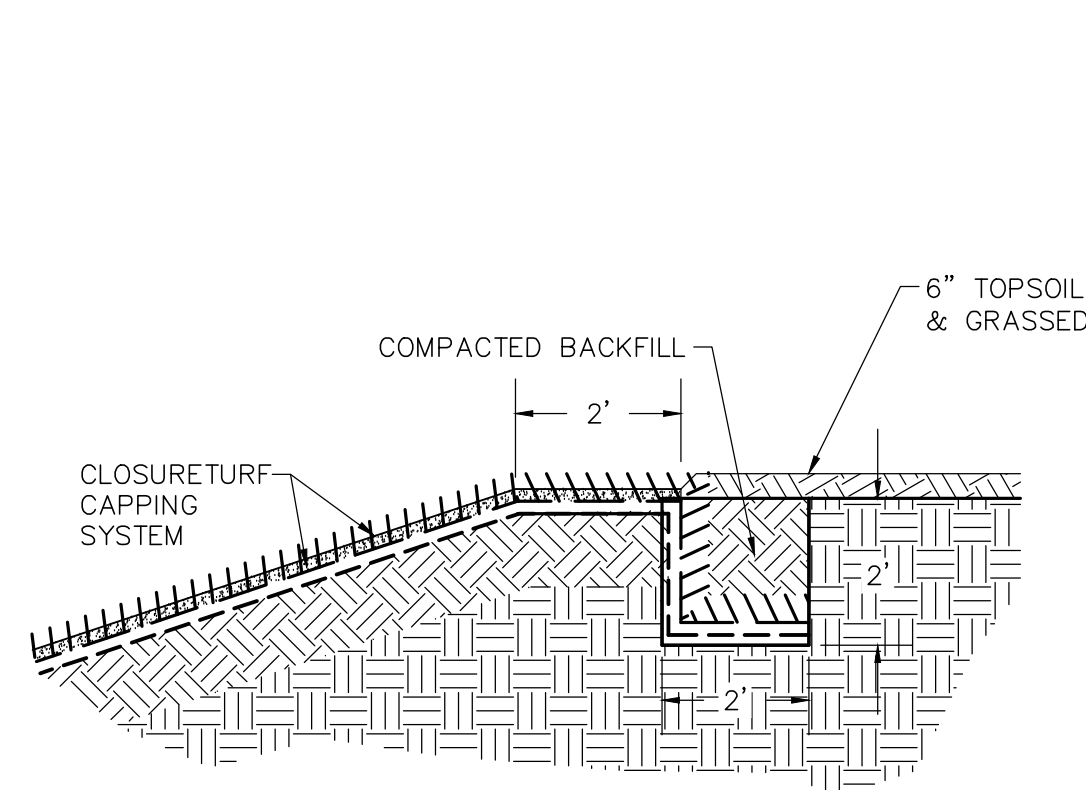


FRONT VIEW

SIDE VIEW

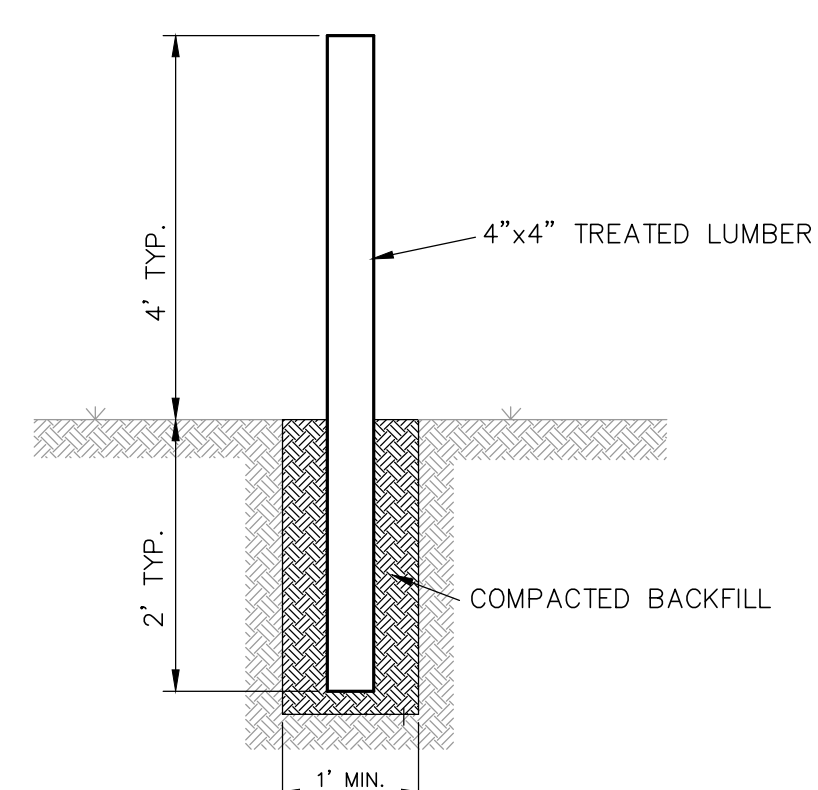
CHECKDAM DETAIL

N.T.S.



DETAIL B - ANCHOR TRENCH

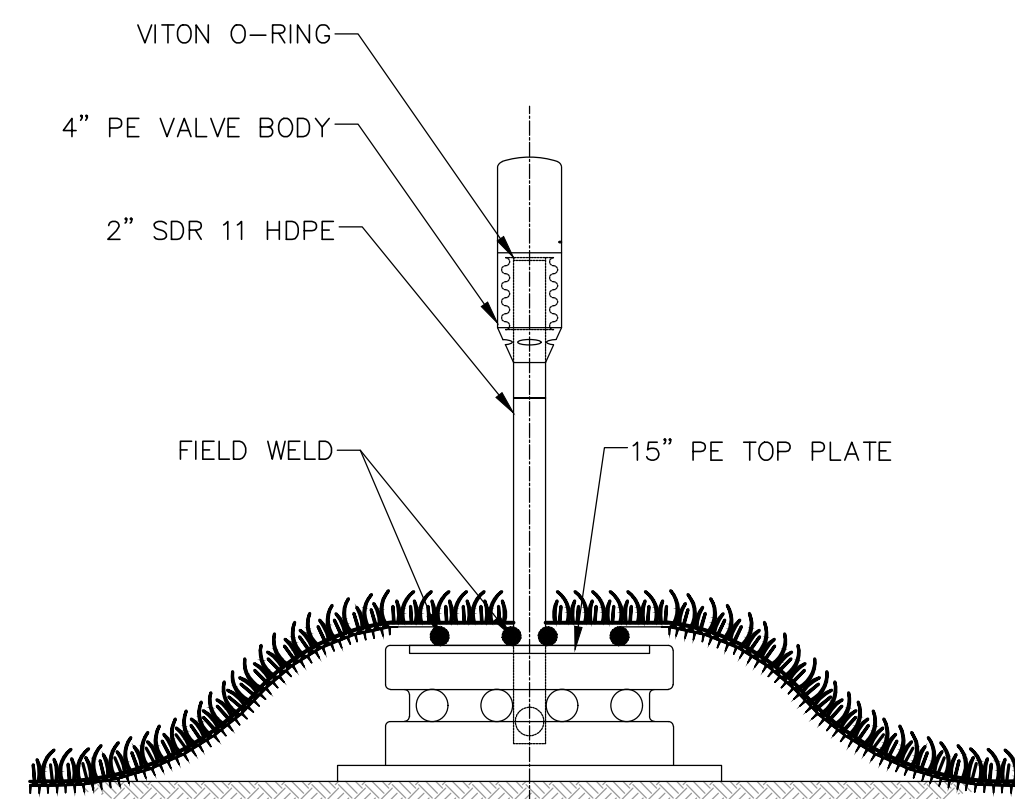
N.T.S.



- NOTES:**
1. MARKERS SHALL BE SPACE APPROXIMATELY 300- FEET APART.

LINER EDGE MARKER

N.T.S.



- NOTE:**
1. PRESSURE RELIEF VALVES TO BE INSTALLED AS NEEDED.

CLOSURETURF™ PRESSURE RELIEF VALVE

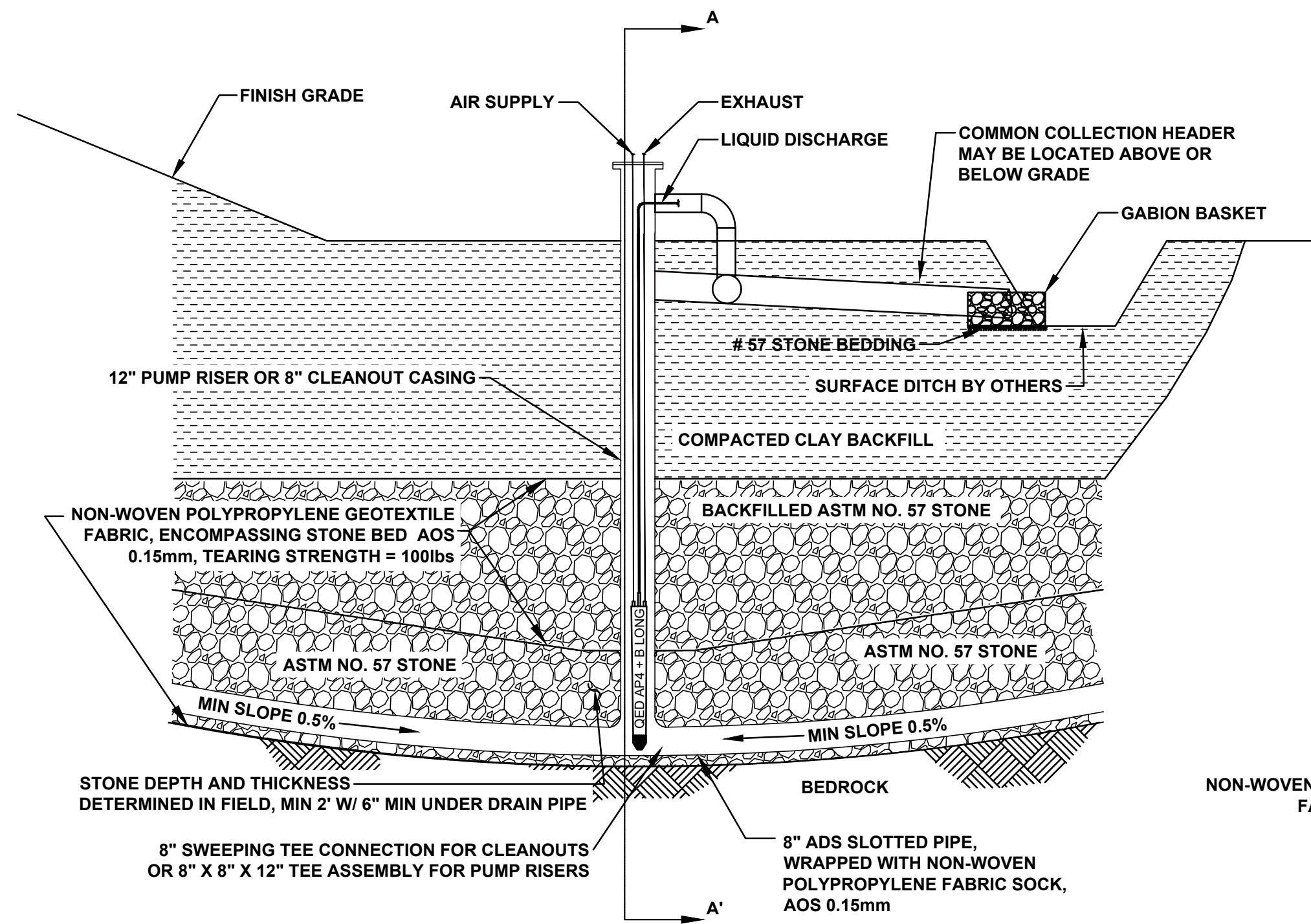
N.T.S.



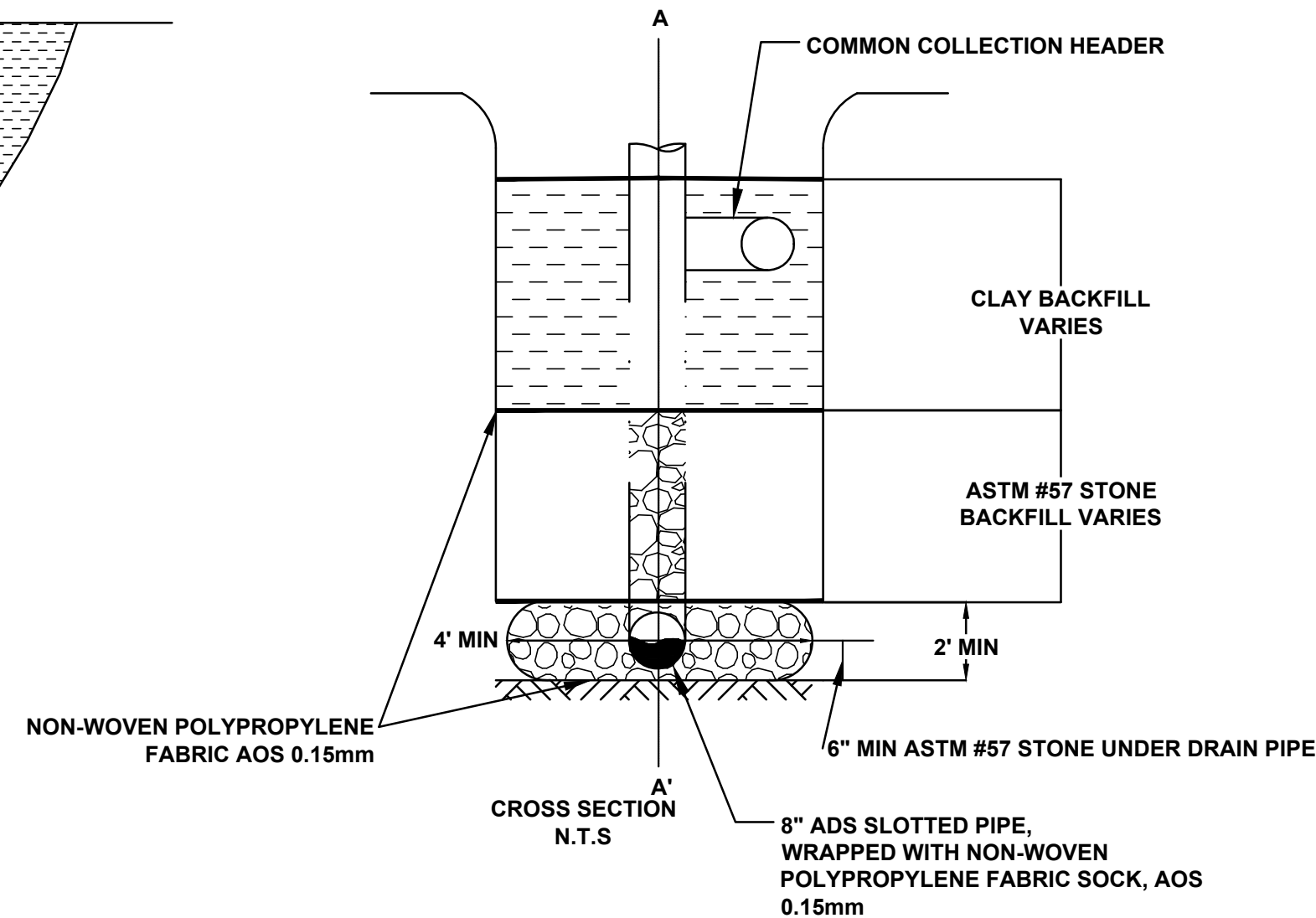
CLOSURE DETAILS			
CLOSURE DRAWINGS			
FOR GEORGIA POWER PLANT YATES ASH MANAGEMENT AREA COWETA COUNTY, GEORGIA			
PROJ. NO.	I054-107-AMA	DWG.	EDIT 02/25/26
SCALE	N/A	SHEET 10 OF 13	
FEBRUARY 2026			

Atlantic Coast Consulting, Inc.
770-594-5998
www.atcc.net

11545 Wills Road
Suite 100
Alpharetta, GA 30009

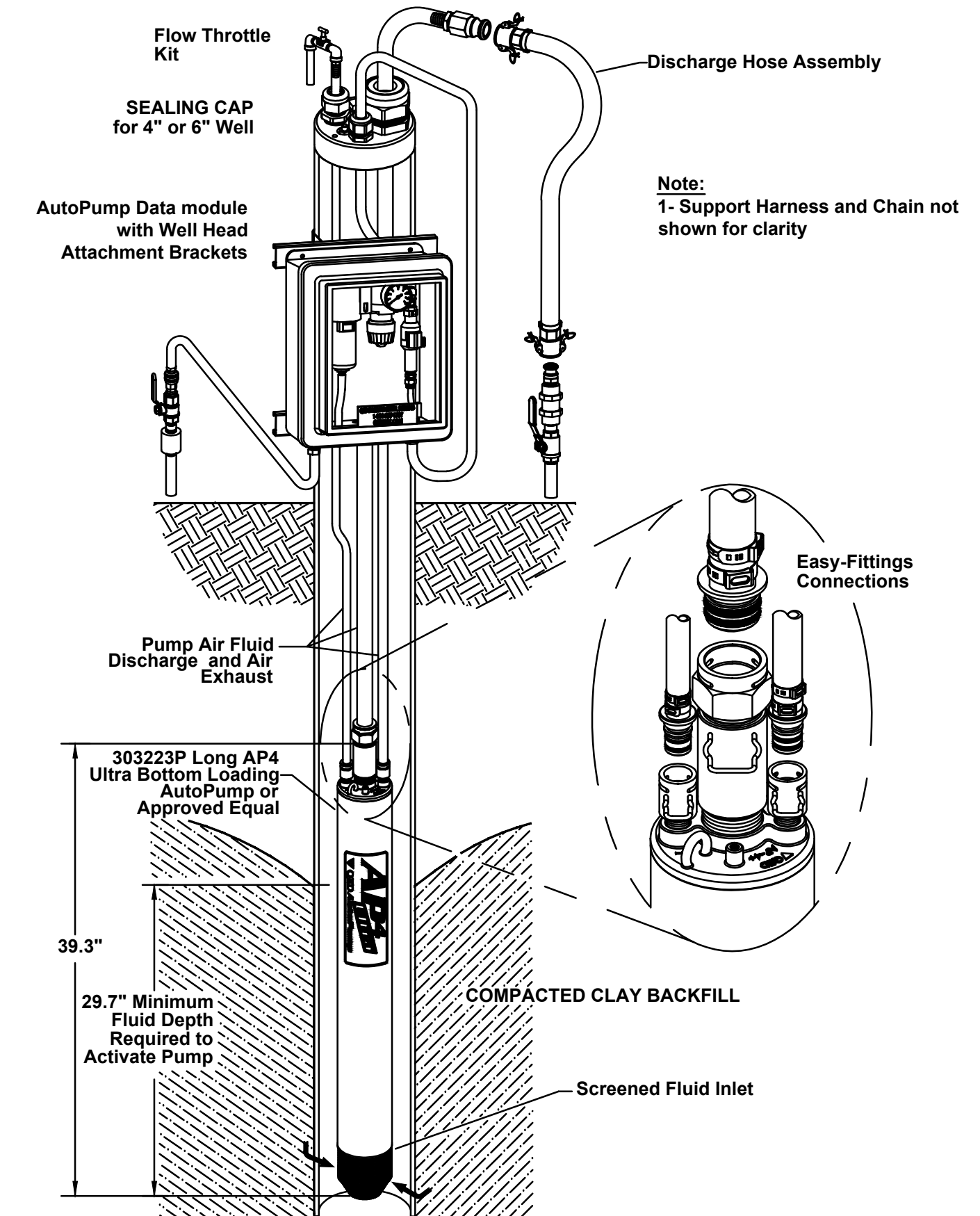


WELL RISER AND COMMON HEADER DETAIL
SCALE = NOT TO SCALE



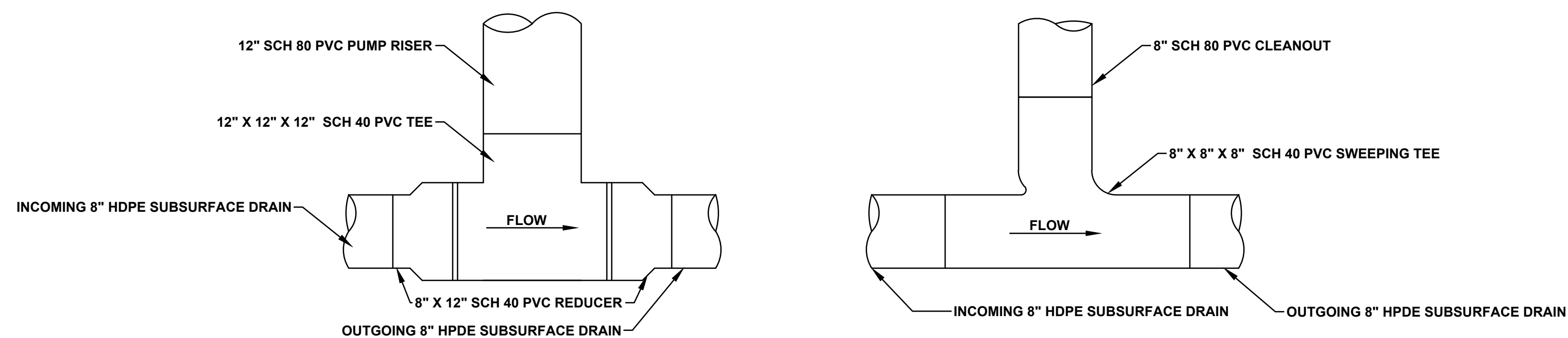
1. RISER WELL HEAD DETAILS NOT SHOWN INCLUDING ENCLOSURES, REGULATOR, CYCLE COUNTER, ETC.
2. CERTAIN 12-INCH RISERS MAY HAVE MULTIPLE PUMPS
3. CERTAIN 8-INCH CLEANOUTS MAY HAVE A PUMP
4. BURIED DISCHARGE LINES MAY BE TERMINATED WITH A TEE DIFFUSER.
5. SIZE OF AIR SUPPLY & PUMP DISCHARGE LINES TBD.

DOWN-WELL Long AP4 Ultra BOTTOM LOADING CONTROLLERLESS AutoPump with APDM, Jacketed Tubing, Easy Fittings, Air and Fluid discharge Kits



LONG AP4 ULTRA BOTTOM LOADING PUMP
QED ENVIRONMENTAL SYSTEMS LTD.

SCALE = NOT TO SCALE



PUMP RISER AND CLEANOUT CONNECTION DETAIL
SCALE = NOT TO SCALE

NOTE:
ADVANCED ENGINEERING METHOD (AEM) SUBSURFACE DRAIN DESIGN AND DETAILS THIS SHEET BY TRC (SEE PART B SECTION 3 FOR PLAN AND PROFILE).



AEM SUBSURFACE DRAIN DETAILS			
CLOSURE DRAWINGS			
FOR GEORGIA POWER PLANT YATES ASH MANAGEMENT AREA COWETA COUNTY, GEORGIA			
11545 Wills Road Suite 100 Alpharetta, GA 30009			
PROJ. NO.	I054-107-AMA	DWG.	EDIT 02/25/26
SCALE	N/A	SHEET 11 OF 13	
FEBRUARY 2026			

P:\Industrial\054-Southern Company\107-Plant Yates COR Permittals\107-AMA-000 (cadd)04.dwg 2/25/26 MATTHEW TRUNNELL

